



**STRONG PARTNERS.  
TOUGH TRUCKS.™**



# **FOUR-WHEEL ELECTRIC COUNTERBALANCED LIFT TRUCKS**

**J4.0-5.5XN6**

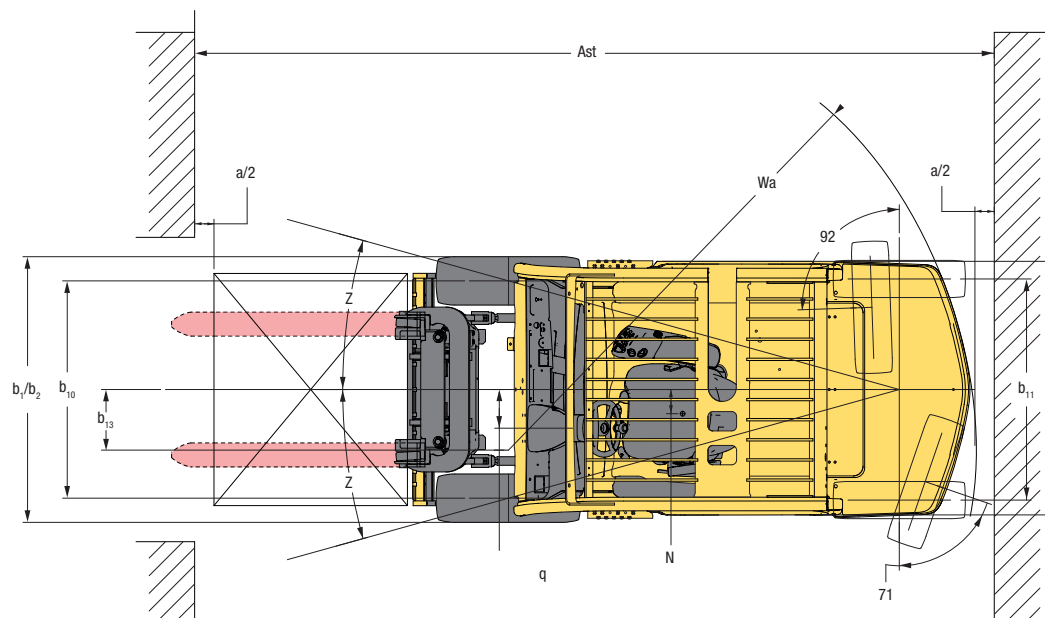
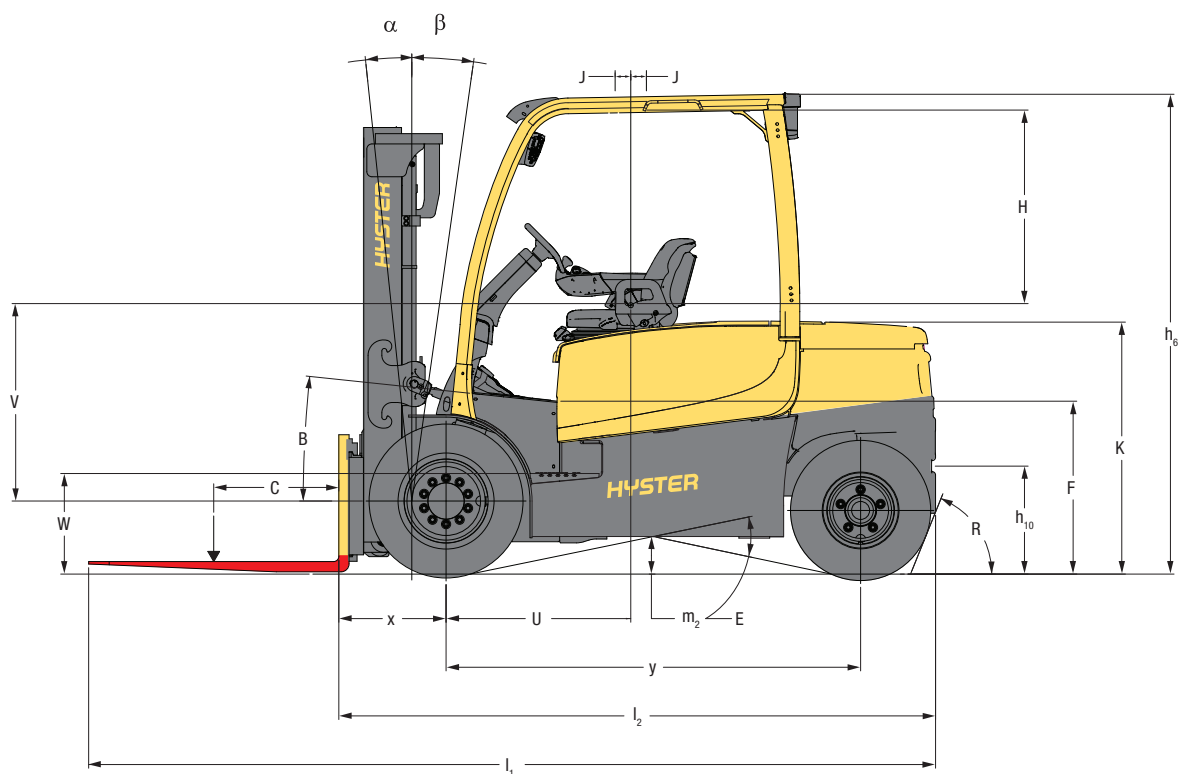
**4 000-5 500 KG**







# TRUCK DIMENSIONS



$$R = \sqrt{(l_6 + x)^2 + \left(\frac{b_{12} - b_{13}}{2}\right)^2}$$

$$A_{st} = W_a + R + a \text{ (see lines 4.34.1 \& 4.34.2)}$$

a = Minimum operating clearance  
(VDI standard = 200 mm BITA recommendation = 300 mm)

$l_6$  = Load Length

# TRUCK DIMENSIONS

		J4.0XN	J4.5XN	J5.0XN	J5.0XN6	J5.5XN6
Load Moment - cmkgs		409200	460350	511500	561500	617650
Vertical COG	d mm	690	689	677	703	703
Horizontal COG	f mm	929	913	956	1040	1068
Step height	k mm	490	490	490	490	490
Head clearance	o mm	978	978	978	978	978

# RATED CAPACITIES

## NOTE:

Specifications are affected by the condition of the vehicle and how it is equipped, as well as the nature and condition of the operating area. If these specifications are critical, the proposed application should be discussed with your dealer.

- ★ Max battery
- ‡ Bottom of forks
- ◆ Without load backrest
- $h_g$  subject to +/- 5 mm tolerance
- Full suspension in compressed position specified.
- Add 30mm with load backrest
- △ With HiP performance setting
- ▣ With eLo performance setting
- ◇  $L_{PAZ}$ , Measured according to the test cycles and based on the weighting values contained in EN12053
- $L_{WAZ}$ , measured according to the test cycles and based on the weighting values contained in EN12053
- ◆ Stacking aisle width (lines 4.34.1 & 4.34.2) are based on the V.D.I. standard calculation as shown on illustration. The British Industrial Truck Association recommends the addition of 100 mm to the total clearance (dimension a) for extra operating margin at the rear of the truck.
- † Gradeability figures (lines 5.7 & 5.8) are provided for comparison of tractive performance, but are not intended to endorse the operation of the vehicle on the stated inclines. Follow instructions in the operating manual regarding operation on inclines.
- ▽ Variable


## MAST TABLES:

- ❖ Max fork height =  $h3+s$
- Freelift (top of forks) =  $h2+s$
- ★ Add 482mm with load backrest extension
- ▲ Deduct 435mm with load backrest extension
- \* Add 435mm with load backrest extension
- ‡ Add 429mm with load backrest extension
- ◆ Deduct 429mm with load backrest extension.
- ◎ Add 334mm with load backrest extension
- ❖ Deduct 282mm with load backrest extension.
- \* Add 282mm with load backrest extension.
- ❖ Add 10mm for 5.5XN6

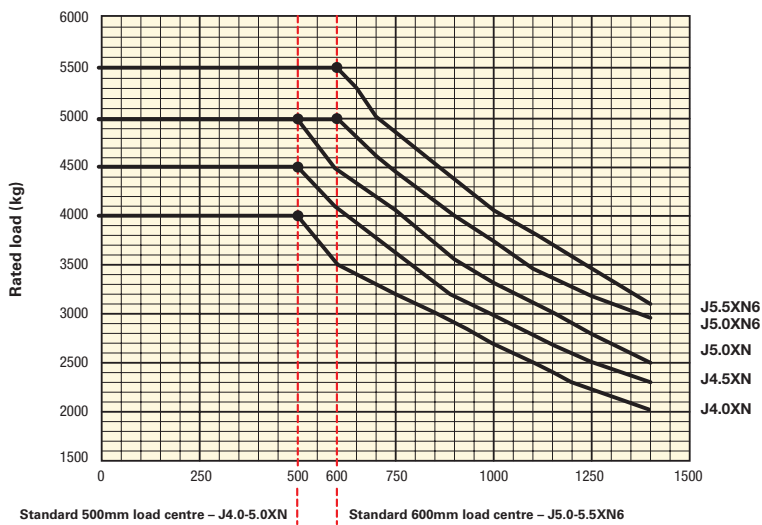
## NOTICE

Care must be exercised when handling elevated loads. When the carriage and/or load is elevated, truck stability is reduced. It is important that mast tilt in either direction be kept to a minimum when loads are elevated. Operators must be trained and adhere to the instructions contained in the Operating Manual.

Hyster products are subject to change without notice. Lift trucks illustrated may feature optional equipment.

 **Safety:** This truck conforms to the current EU requirements.

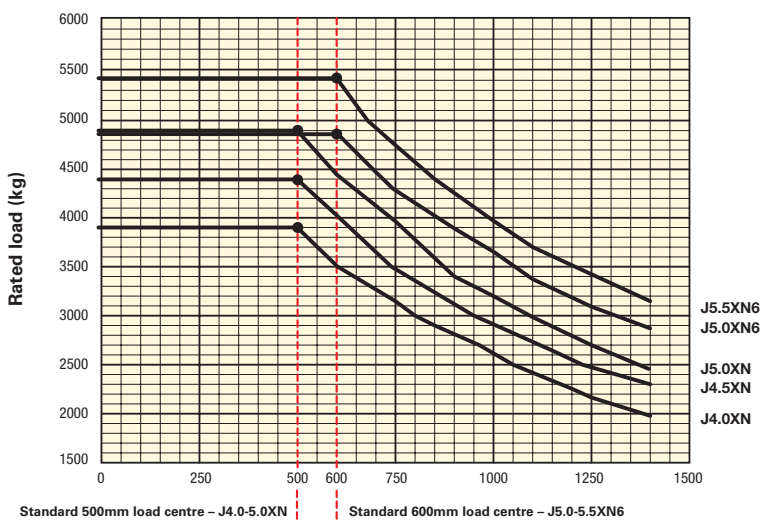
## STANDARD CARRIAGE



**Load centre** Distance from front of forks to centre of gravity of load.

**Rated load** Based on 2-stage LFL mast with 5450mm lift height for J4.0XN, 4890mm for J4.5XN, 4390mm for J5.0XN, 5100mm for J5.0XN6, 4700mm for J5.5XN6 and 1374mm integral sideshift carriage with load backrest. Minimum battery weight 2070kg for all models.

## INTEGRAL SIDE SHIFT CARRIAGE



**NOTE:** Special forks with higher load ratings may be required to obtain full truck ratings with load centres 1400mm or greater.

## PRODUCT FEATURES

The J4.0XN-5.5XN6 is designed to handle the loads found in tough indoor or outdoor applications such as timber processors and handlers, automotive manufacturers, paper / pulp, beverage / bottle handling and breweries / distilleries, metal works and fabricators, cargo storage and warehousing, building and construction. Offers many functions and features, including eLo and HiP performance settings and high mounted multi feature dash display which can be found on the successful J1.5-3.5XN series.

### DEPENDABILITY

- Part of the successful XN range that has brought you industry leading reliability
- Strong construction and proven components ensure long term reliability and durability e.g. VSM (Vehicle system manager), O-ring face seal fittings, AC motors, sealed electrical connectors, Hall effect sensors, Solid state encoders
- Robust truck with highly rigid construction has been designed with a heavy duty mast and axle for excellent load handling capability and high residual capacity, in order to ensure fast, stable load handling and high productivity in arduous and intensive heavy duty applications
- Optional auxillary hydraulic cooler for the most intense of lifting applications, side thrust bearings in carriage for attachment use

### COST OF OWNERSHIP

- Designed to deliver the optimal balance between productivity and energy consumption (e-Balance) to give you a low cost per pallet moved in varying application conditions
- Designed to be the most robust electric CB on the market, to withstand the rigours of the toughest applications
- 840-930 Ah 80V DIN batteries available
- Oil immersed brakes and automatic park brakes save money by lowering maintenance requirements

### PRODUCTIVITY

- 80V dual front wheel drive with AC motors throughout (hoist/steer and traction)
- HiP performance setting offers the ultimate in eBalance. ICE-like productivity and low energy consumption
- Dual drive motor and ZTR Axle is a unique feature in this capacity segment, which allows for excellent manoeuvrability and productivity, thanks to a 4161mm turning aisle width for H4.0-5.0XN (1000x1200mm pallet), while still offering unrivalled operator space and comfort
- The truck is designed for heavy duty usage with superb residual capacity and Heavy Duty Class IV carriage and side shift on J5.0XN6 and J5.5XN6 models. This allows operators to be more productive through confident load handling
- Offers the fastest travel speeds in the industry (21km/h unladen) to match ICE truck performance with a stunning maximum laden lift speed of 0.44 m/s. Designed to meet the requirements of intensive applications where high productivity is of the essence
- Available options, which enhance productivity include; TouchPoint™ mini levers integrated into the armrest, light kits, carriage with integral side shift, full or partial cabins including optional heater, programmable maintenance reminder option

## ERGONOMICS

Hyster focuses on ensuring that the operator's first hour is as productive as the last

- Lowest vibration seat. 0.5 m/s<sup>2</sup> according to EN13059 - Safety Of Industrial Trucks
- The acclaimed TouchPoint™ mini-levers and armrest ensure that the operator is comfortable at all times
- Low noise 68 dB(A) with standard truck
- The dual drive motors and ZTR steer axle deliver a very tight turning circle, allowing the truck to be long enough to feature a very spacious operator compartment
- PPS tyres for a comfortable ride over rough terrain
- Options - Full or partial cabin with heater option High backrest seat with lumbar support, TouchPoint™ mini lever module and armrest, Telescopic steer column with memory tilt

## SERVICEABILITY

- Service intervals = 1000 hours / 6 months
- VSM and CANbus technology - faster troubleshooting and resolution
- Maintenance free automatic park brake
- Oil-immersed brakes service interval = 4000 hours
- Drive axle / transmission oil change interval = 4000 hours
- AC motors on traction and hoist are Maintenance free
- Hydraulic oil change interval = 4000 hours
- Standard warranty = 2000 hours or one year
- Power train warranty = 4000 hours or two years
- Available programmable maintenance reminder

## OPTIONS

- 10 class III standard mast offerings
- 10 class IV standard mast offerings
- Wide tread (front) for wide load handling and dual wheels for enhanced ride on rough yards
- Load backrest and forks
- Integral side shift
- Non marking tyres
- TouchPoint™ mini levers
- Swivel full suspension seats (cloth/vinyl)
- High Backrest seat with lumbar support and headrest
- Telescopic steering column with memory tilt
- Modular cabin with heater
- Monotrol
- LED light packages with visible alarm strobe
- Audible back up alarm
- 12V power outlet
- DIN Batteries and chargers from multiple suppliers
- Extended Warranty (36 Months / 6000 hours)
- Dual internal and Panoramic mirror
- Load weight indicator
- Impact sensor
- Keyless start with Operator ID
- Daily Operator checklist
- System Monitoring
- Auxillary hydraulic cooler (standard on J5.5XN6)
- Side thrust bearings for attachment use
- Spray and corrosive environment "wash down" protection kit



# HYSTER® DEALERS



Contact your nearest Hyster Dealership  
by visiting [www.hyster.com.au](http://www.hyster.com.au)



Contact your local Hyster Dealer

## HYSTER ASIA PACIFIC

1 Bullecourt Avenue, Milperra NSW, Australia 2214

Tel: +61 (2) 9795 3800 Fax: +61 (2) 9792 8484

No. 49, Jalan Astaka V8/84A, Bukit Jelutong,  
40150 Shan Alam, Selangor, Malaysia

Tel: +603 7831 3385

[hyster.com/pacific/en-au](http://hyster.com/pacific/en-au)


[hyster.com/asia/en-sg](http://hyster.com/asia/en-sg)



/Hysterasiapacific



@Hyster\_AP

 is a Registered Trademark.

HYSTER is a Registered Trademark. STRONG PARTNERS. TOUGH TRUCKS. EZXCHANGE, HSM and VISTA are trademarks in the United States and certain other jurisdictions. © Hyster Asia Pacific 2016. All rights reserved. Printed in Australia. Specifications and details in this brochure are subject to change without prior notification. Please consult with your Hyster dealer for the most up to date information and to confirm exact capacities. 3990073 Rev. 04-12/15-TLC

**HYSTER.COM.AU**