

H36-48XD-12 SERIES

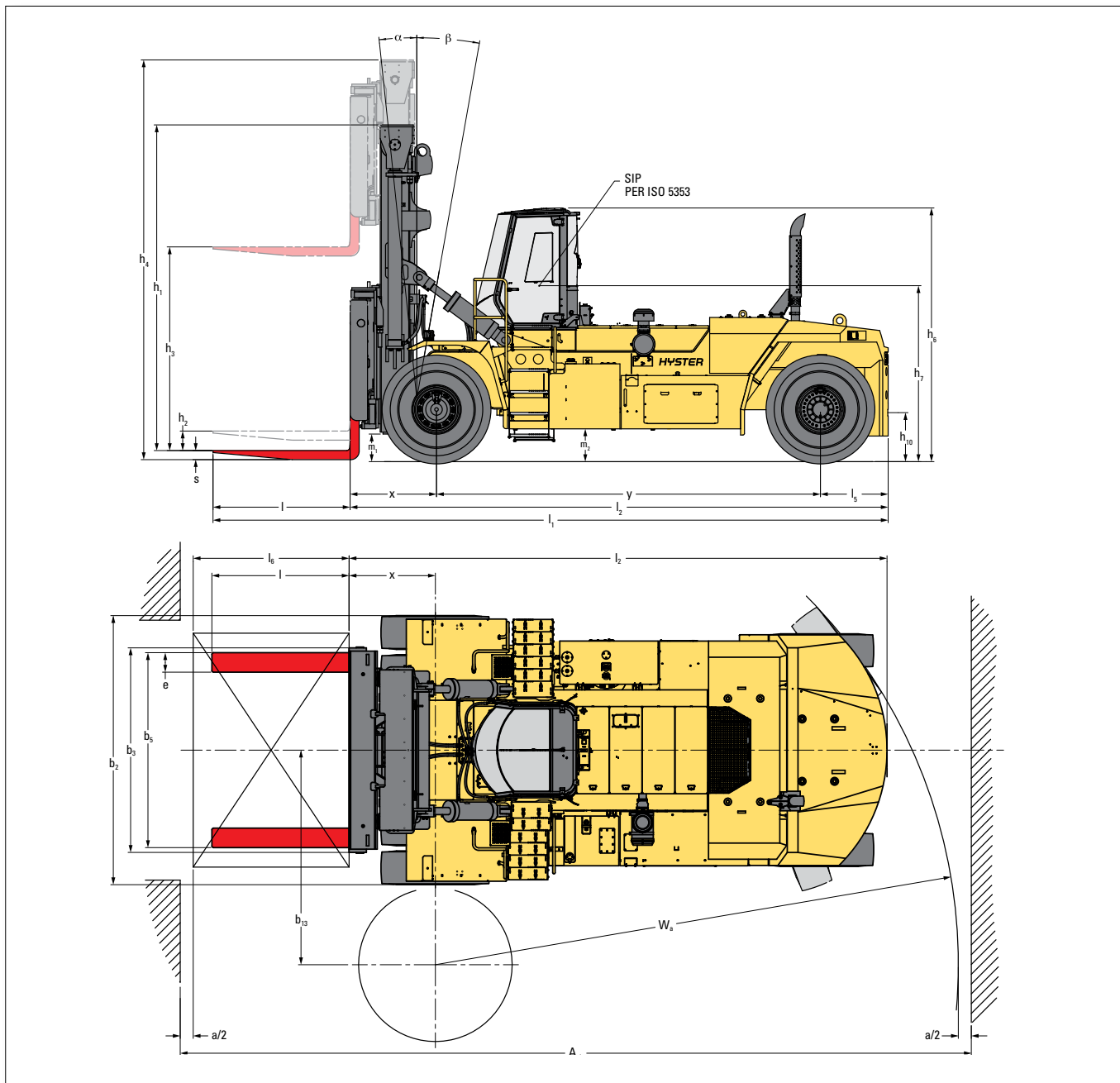


HEAVY DUTY FORKLIFT TRUCK PNEUMATIC TYRE PRODUCT TECHNICAL GUIDE



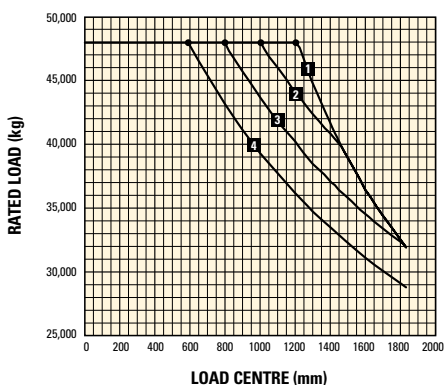
WWW.HYSTER.COM

TRUCK DIMENSIONS

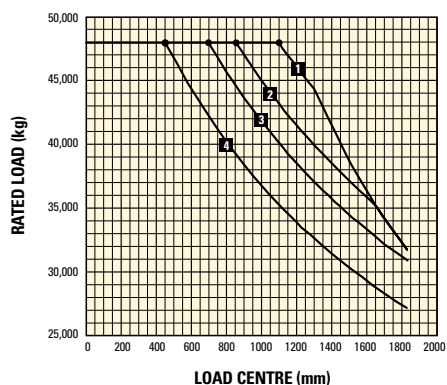


CAPACITY RATINGS

STANDARD CARRIAGE WITH FORK POSITIONING



PIN TYPE SIDE SHIFT FRAME CARRIAGE WITH FORK POSITIONING



Ratings are for the basic truck equipped with mast 7010 mm lift height (BOF) standard carriage and forks. Only applicable for 18.00 - 25 tyres.

MAST AND CAPACITY INFORMATION

H36XDS12 RATED CAPACITY KG@ 1200 MM LOAD CENTRE

	Lift height	Lowered height	Freelift height	Extended height	Mast tilt Forward / Backward	Capacity standard carriage	Capacity sideshift carriage
	h ₃ (mm)	h ₁ (mm)	h ₂ (m)	h ₄ (mm)	α/β (°)	Q (kg)	Q (kg)
2 STAGE NFL	4267	5183	0	7317	6 / 10	36000	34340
	7010	6555	0	10060	6 / 10	36000	33890
	8534	7317	0	11584	6 / 10	35120	32970
	9144	7622	0	12194	6 / 10	34720	32590
	9754	7927	0	12804	6 / 10	34210	32180
	12650	9454	0	15779	15 / 15	TBA	TBA

H40XDS12 RATED CAPACITY KG@ 1200 MM LOAD CENTRE

	Lift height	Lowered height	Freelift height	Extended height	Mast tilt Forward / Backward	Capacity standard carriage	Capacity sideshift carriage
	h ₃ (mm)	h ₁ (mm)	h ₂ (m)	h ₄ (mm)	α/β (°)	Q (kg)	Q (kg)
2 STAGE NFL	4267	5183	0	7317	6 / 10	40000	39000
	7010	6555	0	10060	6 / 10	40000	38550
	8534	7317	0	11584	6 / 10	40000	38280
	9144	7622	0	12194	6 / 10	40000	37870
	9754	7927	0	12804	6 / 10	39750	37460
	12650	9454	0	15779	15 / 15	TBA	TBA

H44XDS12 RATED CAPACITY KG@ 1200 MM LOAD CENTRE

	Lift height	Lowered height	Freelift height	Extended height	Mast tilt Forward / Backward	Capacity standard carriage	Capacity sideshift carriage
	h ₃ (mm)	h ₁ (mm)	h ₂ (m)	h ₄ (mm)	α/β (°)	Q (kg)	Q (kg)
2 STAGE NFL	4267	5183	0	7317	6 / 10	44000	41980
	7010	6555	0	10060	6 / 10	44000	41530
	8534	7317	0	11584	6 / 10	43700	41260
	9144	7622	0	12194	6 / 10	43600	41160
	9754	7927	0	12804	6 / 10	43150	40730
	12650	9454	0	15779	15 / 15	TBA	TBA

H48XDS12 RATED CAPACITY KG@ 1200 MM LOAD CENTRE

	Lift height	Lowered height	Freelift height	Extended height	Mast tilt Forward / Backward	Capacity standard carriage	Capacity sideshift carriage
	h ₃ (mm)	h ₁ (mm)	h ₂ (m)	h ₄ (mm)	α/β (°)	Q (kg)	Q (kg)
2 STAGE NFL	4267	5183	0	7317	6 / 10	48000	46560
	7010	6555	0	10060	6 / 10	48000	46110
	8534	7317	0	11584	6 / 10	48000	45840
	9144	7622	0	12194	6 / 10	48000	45740
	9754	7927	0	12804	6 / 10	47710	45310
	12650	9454	0	15779	15 / 15	TBA	TBA

H40XD12 RATED CAPACITY KG@ 1200 MM LOAD CENTRE

	Lift height	Lowered height	Freelift height	Extended height	Mast tilt Forward / Backward	Capacity standard carriage	Capacity sideshift carriage
	h ₃ (mm)	h ₁ (mm)	h ₂ (m)	h ₄ (mm)	α/β (°)	Q (kg)	Q (kg)
2 STAGE NFL	4267	5183	0	7317	6 / 10	40000	38350
	7010	6555	0	10060	6 / 10	40000	37900
	8534	7317	0	11584	6 / 10	40000	37700
	9144	7622	0	12194	6 / 10	39600	37200
	9754	7927	0	12804	6 / 10	39250	36750

H44XD12 RATED CAPACITY KG@ 1200 MM LOAD CENTRE

	Lift height	Lowered height	Freelift height	Extended height	Mast tilt Forward / Backward	Capacity standard carriage	Capacity sideshift carriage
	h ₃ (mm)	h ₁ (mm)	h ₂ (m)	h ₄ (mm)	α/β (°)	Q (kg)	Q (kg)
2 STAGE NFL	4267	5183	0	7317	6 / 10	44000	42500
	7010	6555	0	10060	6 / 10	44000	42000
	8534	7317	0	11584	6 / 10	44000	41750
	9144	7622	0	12194	6 / 10	44000	41650
	9754	7927	0	12804	6 / 10	43600	41200

H48XD12 RATED CAPACITY KG@ 1200 MM LOAD CENTRE

	Lift height	Lowered height	Freelift height	Extended height	Mast tilt Forward / Backward	Capacity standard carriage	Capacity sideshift carriage
	h ₃ (mm)	h ₁ (mm)	h ₂ (m)	h ₄ (mm)	α/β (°)	Q (kg)	Q (kg)
2 STAGE NFL	4267	5183	0	7317	6 / 10	48000	46200
	7010	6555	0	10060	6 / 10	48000	45750
	8534	7317	0	11584	6 / 10	48000	45450
	9144	7622	0	12194	6 / 10	48000	45350
	9754	7927	0	12804	6 / 10	47650	44900

H36XDS12-H48XDS12 SPECIFICATIONS

			HYSTER									
			H36XDS12		H40XDS12		H44XDS12		H48XDS12			
GENERAL	1-1	Manufacturer			HYSTER							
	1-2	Model designation			H36XDS12		H40XDS12		H44XDS12		H48XDS12	
	1-3	Powertrain / drivetrain			Diesel							
	1-4	Operator type			Seated							
	1-5	Load capacity at load center nominal (1) STD / SS	Q	kg	36000	34500	40000	39000	44000	42600	48000	46500
	1-6	Load center	c ₁	mm	1200							
	1-8	Load distance Centre of Drive Axle to Fork (2) STD / SS	x	mm	1252 / 1328							
	1-9	Wheelbase	y	mm	5385							
	WEIGHT	2-1	Service weight		kg	52446		55586		57816		60816
2-2		Axle loading laden front / rear		kg	83353	5062	89319	6268	95178	6639	101730	7086
2-3		Axle loading unladen front / rear		kg	31012	21435	31126	24460	31166	26650	31899	28917
WHEELS	3-1	Tire type			Pneumatic							
	3-2	Tire size front			18.00-25 40PR							
	3-3	Tire size rear			18.00-25 40PR							
	3-5	Number of tires front / rear (X driven)		#	x 4 / 2							
	3-6	Tread front	b ₁₀	mm	3113							
	3-7	Tread rear	b ₁₁	mm	3077							
DIMENSIONS	4-1	Mast tilt forward / backward		α/β deg	6° / 10°							
	4-2	Height mast lowered (Unladen)		h ₁ mm	5156							
	4-3	Freelift		h ₂ mm	0							
	4-4	Lift Height (Bottom of Forks)		h ₃ mm	4267							
	4-5	Height mast extended		h ₄ mm	7290							
	4-7-1	Height of overhead guard (closed cab)		h ₆ mm	3904							
	4-7-2	Height of overhead guard (closed cab w/ strobe light) w/o AC / w/AC		h ₆ mm	3999 / 4029							
	4-7-4	Height of overhead guard (closed cab w/ work lights)		h ₆ mm	4060							
	4-8	Seat height to SIP ISO 5353		h ₇ mm	2680							
	4-12	Coupling Height		h ₁₀ mm	750							
	4-17	Overhang Rear		l ₅ mm	1053							
	4-19	Overall length (2) STD / SS		l ₁ mm	10132 / 10208							
	4-20	Length to face of forks (2) STD / SS		l ₂ mm	7692 / 7768							
	4-21	Overall width truck		b ₂ mm	4233							
	4-22	Fork Dimensions		s/e/l mm	140 / 300 / 2440							
	4-23	Carriage type			Standard carriage w/hydraulic fork positioning							
	4-23-1	Carriage type (Optional)			Apron sideshift carriage w/hydraulic fork positioning							
	4-24	Carriage Width		b ₃ mm	3150							
	4-25	Width over forks Min / Max		b ₅ mm	1666 / 3008							
	4-30	Side Shift STD / SS		b ₈ mm	0 / +/-305							
	4-31	Ground clearance laden below mast		m ₁ mm	371							
	4-32	Ground clearance center of wheelbase		m ₂ mm	452							
	4-33	Load Size		b ₁₂ /l ₆ mm	2400 / 2400							
	4-34-1	Aisle Width (a=0) (2) STD / SS		A _{st} mm	11132 / 11208							
4-34-2	Aisle Width (a=10%) (2) STD / SS		A _{st} mm	12245 / 12329								
4-34-3	Aisle Width (a=200) (2) STD / SS		A _{st} mm	11332 / 11408								
4-35	Outside turning radius		W _a mm	7480								
4-36	Internal turning radius (centre of radius to centerline truck)		b ₁₃ mm	3011								
PERFORMANCE TIER 3	5-1	Travel speed with / without load (3)		km/h	25.0 / 25.0							
	5-1-1	Travel speed with / without load backwards		km/h	19.0 / 20.0							
	5-2	Lifting speed with / without load		m/s	0.26 / 0.31							
	5-2-1	Lifting speed with 70% load		m/s	0.30							
	5-3	Lowering speed with / without load		m/s	0.40 / 0.50							
	5-5	Drawbar pull - 1 mph (1.6 km/h) with / without load		kN	301 / 307	300 / 307		299 / 306		298 / 306		
	5-6	Drawbar pull - max with / without load		kN	312 / 318	310 / 317		309 / 317		308 / 316		
	5-7	Gradeability - 1 mph (1.6 km/h) with / without load		%	37 / 38	34 / 36		31 / 34		29 / 33		
5-8	Gradeability - max with / without load		%	39 / 38	35 / 36		33 / 34		30 / 33			
PERFORMANCE TIER 4	5-1	Travel speed with / without load (3)		km/h	25.0 / 25.0							
	5-1-1	Travel speed with / without load backwards		km/h	19.0 / 20.0							
	5-2	Lifting speed with / without load		m/s	0.26 / 0.31							
	5-2-1	Lifting speed with 70% load		m/s	0.30							
	5-3	Lowering speed with / without load		m/s	0.40 / 0.50							
	5-5	Drawbar pull - 1 mph (1.6 km/h) with / without load		kN	308 / 314	306 / 313		305 / 313		304 / 312		
	5-6	Drawbar pull - max with / without load		kN	315 / 321	314 / 321		313 / 320		311 / 320		
	5-7	Gradeability - 1 mph (1.6 km/h) with / without load		%	38 / 38	35 / 36		32 / 34		30 / 33		
5-8	Gradeability - max with / without load		%	39 / 38	36 / 36		33 / 34		31 / 33			

H40XD12-H48XD12 SPECIFICATIONS

GENERAL	1-1		HYSTER							
	Manufacturer		H40XD12		H44XD12		H48XD12			
	1-2		Model designation							
	1-3		Powertrain / drivetrain							
	1-4		Operator type							
	1-5		Q	kg	40000	38500	44000	42600	48000	46450
	1-6		Load center							
	1-8		x	mm	1252 / 1328					
	1-9		y	mm	5900					
WEIGHT	2-1		Service weight							
	2-2		Axle loading laden front / rear							
	2-3		Axle loading unladen front / rear							
WHEELS	3-1		Tire type							
	3-2		Tire size front							
	3-3		Tire size rear							
	3-5		Number of tires front / rear (X driven)							
	3-6		Tread front							
	3-7		Tread rear							
	DIMENSIONS	4-1		Mast tilt forward / backward						
4-2		Height mast lowered (Unladen)								
4-3		Freelift								
4-4		Lift Height (Bottom of Forks)								
4-5		Height mast extended								
4-7-1		Height of overhead guard (closed cab)								
4-7-2		Height of overhead guard (closed cab w/ strobe light) w/o AC / w/AC								
4-7-4		Height of overhead guard (closed cab w/ work lights)								
4-8		Seat height to SIP ISO 5353								
4-12		Coupling Height								
4-17		Overhang Rear								
4-19		Overall length (2) STD / SS								
4-20		Length to face of forks (2) STD / SS								
4-21		Overall width truck								
4-22		Fork Dimensions								
4-23		Carriage type								
4-23-1		Carriage type (Optional)								
4-24		Carriage Width								
4-25		Width over forks Min / Max								
4-30		Side Shift STD / SS								
4-31		Ground clearance laden below mast								
4-32		Ground clearance center of wheelbase								
4-33		Load Size								
4-34-1		Aisle Width (a=0) (2) STD / SS								
4-34-2		Aisle Width (a=10%) (2) STD / SS								
4-34-3		Aisle Width (a=200) (2) STD / SS								
4-35		Outside turning radius								
4-36		Internal turning radius (centre of radius to centerline truck)								
PERFORMANCE TIER 3		5-1		Travel speed with / without load (3)						
		5-1-1		Travel speed with / without load backwards						
		5-2		Lifting speed with / without load						
		5-2-1		Lifting speed with 70% load						
	5-3		Lowering speed with / without load							
	5-5		Drawbar pull - 1 mph (1.6 km/h) with / without load							
	5-6		Drawbar pull - max with / without load							
	5-7		Gradeability - 1 mph (1.6 km/h) with / without load							
PERFORMANCE TIER 4	5-8		Gradeability - max with / without load							
	5-1		Travel speed with / without load (3)							
	5-1-1		Travel speed with / without load backwards							
	5-2		Lifting speed with / without load							
	5-2-1		Lifting speed with 70% load							
	5-3		Lowering speed with / without load							
	5-5		Drawbar pull - 1 mph (1.6 km/h) with / without load							
	5-6		Drawbar pull - max with / without load							
5-7		Gradeability - 1 mph (1.6 km/h) with / without load								
5-8		Gradeability - max with / without load								

POWERTRAINS AND FRONT END EQUIPMENT

POWERTRAINS					
ENGINE	1-1	Manufacturer		HYSTER	
	1-2	Model designation		H36-48XD(S)12	
	1-3	Powertrain / drivetrain		Diesel	
	7-1	Engine manufacturer / model		Cummins / X12	
	7-1a	EPA Tier Compliance		Tier 3	Tier 4
	7-2	Engine power - rated	kW	250 @ 2100	265 @ 2000
	7-3-1	Engine torque @ rpm (1.min)	N-m	1674 @ 1400	1862 @ 1400
	7-4	Number of cylinders / displacement	# / cm3	6 / 11800	
	7-6	Fuel consumption according to VDI cycle	l/h	On request	
	7-8	Alternator output	Amps	110	
7-9	Electrical system voltage	V	24		
7-10	Battery voltage nominal capacity	V / Ah	24 / 105		
DRIVE	8-1	Type of drive unit		Torque Converter	
	8-2	Transmission manufacturer / type	Type	Spicer Off-Highway TE-30	
	8-2-1	Transmission speeds forward / backward	#	5 / 3	
	8-3	Wheel drive / drive axle manufacturer / type	Type	Kessler D102PL341/528-NLB	
	8-11	Service brake	Type	Oil immersed (wet) disc	
	8-12	Parking brake	Type	Dry disc on drive axle	
MISC	10-1	Operating pressure for attachments	MPa	22.5	
	10-2	Oil volume for attachments	l/m	110	
	10-3	Hydraulic tank capacity	l	625	
	10-4	Fuel tank capacity (4)	l	570-855	
	10-4-1	DEF/AdBlue Tank capacity	l	N/A	57
	10-5	Steering design	Type	Hydraulic power steering	
10-6	Number of steering rotations	#	7.3		

NOTES:

Specifications are affected by the condition of the vehicle and how it is equipped as well as the nature and condition of the operating area. Inform your dealer of the nature and condition of the intended operating area when purchasing your Hyster® truck.

- (1) Please contact your dealer for capacity for sideshift carriage i.c.w. 18x33 tyres
- (2) Add 100 mm to values of SS carriage for SS carriage i.c.w. 18x33 tyres
- (3) Factory speed limit set to 25 km/h
- (4) 855L for H40XD12 H44XD12 and H48XD12

NOTICE:

Care must be exercised when handling elevated loads. Operators must be trained and must read understand and follow the instructions contained in the Operating Manual.







All values are nominal values and they are subject to tolerances. For further information please contact the manufacturer.

Hyster products are subject to change without notice.

Lift trucks illustrated may feature optional equipment. Values may vary with alternative configurations.

Specification data is based on VDI 2198.

FRONT END EQUIPMENT

RANGE OF 2 STAGE NFL MASTS	QUICK DISCONNECT PIN TYPE FORKS	QUICK DISCONNECT HOOK TYPE FORKS (SPED)
		
PIN TYPE CARRIAGE WITH INDEPENDENT FORK POSITIONER	PIN TYPE SIDE SHIFT FRAME CARRIAGE WITH INDEPENDENT FORK POSITIONER	HOOK TYPE DOUBLE FUNCTION SIDESHIFT CARRIAGE WITH INDIVIDUAL FORK POSITIONER (SPED)
		

FEATURES AND OPTIONS

PERFORMANCE	STD	OPT
Cummins X12 11.8L Tier 4 Diesel Engine - 265kW	Tier 4	
Cummins X12 11.8L Tier 3 Diesel Engine - 250kW	Tier 3	
Hydraulically driven on-demand cooling fan	X	
Powertrain protection system	X	
Heavy duty air intake	X	
Heavy duty air intake (raised)		X
High mount exhaust	X	
Spicer Off-Highway 5-speed auto-shifting transmission	X	
Kessler D102 Drive axle with wet disc brakes	X	
DRIVE	STD	OPT
Traction speed limiter - unconditional (adjustable)	X	
Traction speed limiter - loaded (adjustable)		X
18.00 - 25 40 Pneumatic Bias Tyres		X
18.00 - 25 40PR Pneumatic Bridgestone STMS Slick Bias Tyres		X
18.00 x 25 Pneumatic Goodyear Bias Tyres		X
18.00 x 25-40 Pneumatic E4 Bias Tyres		X
18.00 x 25 Pneumatic Goodyear Slick Radial Tyres		X
18.00 x 25 Continental Container Master E4 Tyres	X	
Steer wheel lug nut protection	X	
Spare wheels and tires		X
LIFT	STD	OPT
2 Stage Non Free Lift mast	X	
Mast tilt - 6° Forward / 10° Back	X	
Mast tilt - 15° Forward / 15° Back		X
Hydraulic Accumulator		X
Hydraulic system temperature protection with performance de-rate		X
Automatic Throttle-up when lifting (in neutral or inching)	X	
Mast Tilt Indicator - Mechanical		X
HANDLING	STD	OPT
Short Wheelbase (5385mm / 212")		X
Attachments for steel load handling		X
3150mm (124") QD Pin type carriage with individual fork positioning	X	
3150mm (124") QD Pin type integral sideshift carriage with individual fork positioning		X
3150mm (124") QD Hook type double function sideshift carriage with individual fork positioning		X
2440mm (96") length Pin type quick disconnect forks	X	
Pin type quick disconnect forks (various sizes)		X
Hook type quick disconnect forks (various sizes)		X
ERGONOMICS	STD	OPT
Enclosed Operator Cabin with Heating	X	
Enclosed Operator Cabin with Automatic Climate Control		X
Powered tilt operator compartment for service	X	
Isolated cabin mounting for low noise and vibration	X	
Operator presence system	X	
Mechanical suspension seat	X	
Air suspension seat		X
Deluxe air suspension seat		X
Low backrest seat	X	
High backrest seat		X
Armrest on left side	X	
Cloth seat cover		X
Vinyl seat cover	X	
Seat heating		X
Seat ventilation		X
2-point high visibility seatbelt	X	
Lateral seat sliding mechanism		X
Front top and rear wipers	X	
"H"-pattern front wiper		X
"I"-pattern front wiper	X	
Front and rear window defrosters	X	
Right side door	X	
Wire mesh installed on top of operator compartment		X
7" Integrated Performance Display	X	
Touchpoint™ mini levers hydraulic control integrated in control arm	X	
Joystick hydraulic control integrated in control arm		X
Steering wheel with spinner knob	X	
Directional control lever on steering column	X	
Directional Control on Control Arm		X
Automatic park brake		X
Manual park brake	X	
Interior wide angle mirrors	X	
Heater with adjustable speed fan	X	
Telescoping & tilting steering column	X	
24-12 volt DC converter with 1 socket and 2 USB outlets	X	
24-12 volt DC converter with 2 sockets and 2 USB outlets		X
Reading light		X

ERGONOMICS (continued)	STD	OPT
Sun shades on front and rear		X
Sun visors front window		X
Cloth trainer seat with 2-point seatbelt		X
Recirculation fan		X
Accessory mounting bracket on cab front right pillar		X
Document holder on cab front right pillar		X
Heated top- and/or rear window		X
Radio preparation with 2 speakers and antenna		X
VISIBILITY	STD	OPT
Top window with armoured glass	X	
Steel bars under armoured glass top window - enclosed operator cabin		X
Exterior mirrors mounted to handrails	X	
Rear view camera system		X
Radar object detection system		X
Halogen work lights	X	
4 Halogen Work Lights Cab Mounted Front / 2 Halogen Cab Mounted Rear / 2 Halogen Drive Lights Front Fenders / 2 LED Rearward Cluster with Stop Tail and Reverse Lights / Directional Lights on Front Fender & Rear Cluster	X	
4 Halogen Work Lights Cab Mounted Front / 2 Halogen Cab Mounted Rear / 4 Halogen Drive Lights Front Fenders / 2 LED Rearward Cluster with Stop Tail and Reverse Lights / Directional Lights on Front Fender & Rear Cluster		X
4 LED Work Lights Cab Mounted Front / 2 LED Cab Mounted Rear / 2 LED Drive Lights Front Fenders / 2 LED Rearward Cluster with Stop Tail and Reverse Lights / Directional Lights on Front Fender and Rear Cluster		X
4 LED Work Lights Cab Mounted Front / 2 LED Cab Mounted Rear / 4 LED Drive Lights Front Fenders / 2 LED Rearward Cluster with Stop Tail and Reverse Lights / Directional Lights on Front Fender and Rear Cluster		X
4 HP LED Work Lights Cab Mounted Front / 2 HP LED Cab Mounted Rear / 2 LED Drive Lights Front Fenders / 2 LED Rearward Cluster with Stop Tail and Reverse Lights / Directional Lights on front fender and rear cluster		X
4 HP LED Work Lights Cab Mounted Front / 2 HP LED Cab Mounted Rear / 4 LED Drive Lights Front Fenders / 2 LED Rearward Cluster with Stop Tail and Reverse Lights / Directional Lights on Front Fender and Rear Cluster		X
OPERATION	STD	OPT
Air horn 112 dBA	X	
Audible Alarm - Reverse direction activated 82-102dB(A) self adjusting	X	
Visible alarm - Amber strobe light ignition activated	X	
Tire pressure monitoring system	X	
Air conditioning shut-off with open door		X
Lockable battery disconnect switch	X	
Battery jump start connector (NATO plug)		X
Truck start - Key switch with Button - Without Seatbelt Interlock		X
Truck start - Key switch with Button - With Seatbelt Interlock - non-sequenced		X
Truck start - Key switch with Button - With Seatbelt Interlock - sequenced	X	
Operator password (display) for Truck Start		X
Non-lockable fuel cap	X	
Lockable fuel cap		X
Hyster Tracker wireless asset management system	X	
Hyster Tracker wireless asset management - Access / Verification		X
Hyster Tracker wireless asset management - Monitoring		X
Auto greasing system for base truck		X
Centralised greasing provision for upper chain sheaves		X
24 volt electrical system	X	
APPEARANCE	STD	OPT
Hyster yellow paint base truck	X	
Special Colour		X
Operator compartment special paint (outside only)		X
Operator compartment special paint (complete cabin)		X
Hazard warning striping on counterweight		X
SUPPLEMENTAL	STD	OPT
Literature package	X	
Operator's manual	X	
CE certification		X
Warranty: 12 Months / 2000 Hours manufacturer's warranty	X	

Standard or optional items may differ per market.
Please consult your local dealer for more information.

Other options available through Special Products Engineering Department (SPED).
Contact Hyster for details.



Hyster Pacific

1/23 Rowood Road Prospect NSW 2148


Tel: +61 (2) 9795 3800 Fax: +61 (2) 9792 8484

Hyster Asia

16 Tuas Avenue 20 Singapore 638827

Tel: +65 6863 3387 Fax: +65 6863 3349

Visit us online at www.hyster.com

© Hyster Asia Pacific 2023. All rights reserved. HYSTER  and Strong Partners. Tough Trucks are trademarks of Hyster-Yale Group Inc. Specifications and details in this brochure are subject to change without prior notification. Please consult with your Hyster dealer for the most up to date information and to confirm exact capacities.