



H300-360XD SERIES

HEAVY DUTY FORKLIFT TRUCK PNEUMATIC TIRE PRODUCT TECHNICAL GUIDE



H300XDS | H330XDS | H300XD SPECIFICATIONS

		H300XDS				H330XDS				H300XD							
GENERAL	1-1	Manufacturer		HYSTER				HYSTER				HYSTER					
	1-2	Model designation		H300XDS				H330XDS				H300XD					
	1-3	Powertrain/drivetrain		Diesel				Diesel				Diesel					
	1-4	Operator type		Seated				Seated				Seated					
	1-5	Rated load capacity	lb	kg	30,000		13,608		33,000		14,969		30,000		13,608		
	1-6	Load center	in	mm	24		610		24		610		24		610		
	1-8	Load distance	in	mm	35.0		889		35.0		889		35.0		889		
	1-9	Wheelbase	in	mm	114		2,900		114		2,900		130		3,300		
	WEIGHT	2-1	Total truck weight without load		lb	kg	40,336		18,296		41,653		18,893		38,521		17,473
2-2		Axle loading with load, front/rear		lb	kg	64,221	6,115	29,130	2,774	68,288	6,364	30,975	2,887	63,276	5,245	28,702	2,379
2-3		Axle loading without load, front/rear		lb	kg	18,718	21,618	8,490	9,806	18,235	23,418	8,271	10,622	19,652	18,868	8,914	8,558
WHEELS	3-1	Tire type		Type				Pneumatic				Pneumatic					
	3-2	Tire size, front		12.00-20 16PR				12.00-20 16PR				12.00-20 16PR					
	3-3	Tire size, rear		12.00-20 16PR				12.00-20 16PR				12.00-20 16PR					
	3-5	Number of tires, front/rear (X driven)		#				x4/2				x4/2					
	3-6	Tread width, front	in	mm	72.5		1,842		72.5		1,842		72.5		1,842		
	3-7	Tread width, rear	in	mm	79.4		2,017		79.4		2,017		79.4		2,017		
	DIMENSIONS	4-1	Mast tilt, forward/back		Degrees				15F/12B				15F/12B				
4-2		Height of mast lowered	in	mm	141		3,568		141		3,568		141		3,568		
4-3		Freelift	in	mm	0		0		0		0		0		0		
4-4		Lift height (top of fork)	in	mm	147		3,750		147		3,750		147		3,750		
4-4-1		Lift height (bottom of fork)	in	mm	144		3,660		144		3,660		144		3,660		
4-5		Height, extended	in	mm	213		5,398		213		5,398		213		5,398		
4-7		Height to top of operator compartment (open cab)	in	mm	120.3		3,056		120.3		3,056		121.4		3,084		
4-7-1		Height, top of operator comp (closed cab)	in	mm	121.3		3,081		121.3		3,081		122.4		3,109		
4-7-2		Height, top of operator comp (closed cab w/ airco)	in	mm	121.3		3,081		121.3		3,081		122.4		3,109		
4-7-3		Height, top of operator comp (closed cab w/ strobe light)	in	mm	125.1		3,178		125.1		3,178		126.2		3,205		
4-7-4		Height, top of operator comp (closed cab w/ work lights)	in	mm	127.2		3,231		127.2		3,231		128.3		3,259		
4-7-5		Height, top of operator comp (closed cab w/ AC and strobe)	in	mm	126.3		3,208		126.3		3,208		127.4		3,236		
4-8		Seat height to seat point index (SIP)	in	mm	74		1,875		74		1,875		75		1,902		
4-19		Overall length	in	mm	258		6,543		258		6,543		268		6,812		
4-20		Length to load face	in	mm	186		4,714		186		4,714		196		4,983		
4-21		Overall width of truck	in	mm	100		2,540		100		2,540		100		2,540		
4-22		Fork dimension	in	mm	3.5/8/48		90/200/1,220		3.5/8/48		90/200/1,220		3.5/8/48		90/200/1,220		
4-23		Fork carriage type	Type		Standard pin type carriage				Standard pin type carriage				Standard pin type carriage				
4-24		Carriage width	in	mm	98.3		2,496		98.3		2,496		98.3		2,496		
4-25-1		Fork spread, min (in-in)	in	mm	2.8		70		2.8		70		2.8		70		
4-25-2		Fork spread, max (out-out)	in	mm	91.3		2,320		91.3		2,320		91.3		2,320		
4-30	Sideshift	in	mm	0		0		0		0		0		0			
4-31	Ground clearance, under mast w/o load	in	mm	9.6		245		9.6		245		9.6		245			
4-32	Ground clearance, center of wheelbase	in	mm	13.4		341		13.4		341		13.4		341			
4-34	Minimum aisle width (add load length & clearance)	in	mm	200		5,069		200		5,069		215		5,461			
4-35	Outside turning radius	in	mm	165		4,180		165		4,180		180		4,572			
Tier 4F						Cummins QSB 6.7L				Cummins QSB 6.7L				Cummins QSB 6.7L			
PERFORMANCE	5-1	Travel speed, with/without load	mph	km/h	17	18	27	29	17	18	27	29	17	18	27	29	
	5-2-1	Lifting speed, with/without load - 90cc pump	ft/min	m/s	-		-		-		-		-		-		
	5-2-2	Lifting speed, with/without load - 111cc pump	ft/min	m/s	-		-		-		-		-		-		
	5-2-3	Lifting speed, with/without load - 126cc pump	ft/min	m/s	81	91	0.41	0.46	81	91	0.41	0.46	81	91	0.41	0.46	
	5-3	Lowering speed, with/without load	ft/min	m/s	106	95	0.54	0.48	106	95	0.54	0.48	106	95	0.54	0.48	
	5-5	Drawbar pull - 1 mph (1.6 km/h), with/without load	lb	kN	22,000	23,200	98	103	21,900	23,100	97	103	22,100	23,200	98	103	
	5-6	Drawbar pull - stall, with/without load	lb	kN	24,900	26,100	111	116	24,800	26,000	110	116	25,000	26,100	111	116	
	5-7	Gradeability - 1 mph (1.6 km/h), with/without load	%				35/31				33/29				36/35		
5-8	Gradeability stall, with load/without load	%				40/31				38/29				41/35			
Tier 3: Cummins QSB 6.7L						Cummins QSB 6.7L				Cummins QSB 6.7L				Cummins QSB 6.7L			
PERFORMANCE	5-1	Travel speed, with/without load	mph	km/h	17	18	27	29	17	18	27	29	17	18	27	29	
	5-2-1	Lifting speed, with/without load - 90cc pump	ft/min	m/s	-		-		-		-		-		-		
	5-2-2	Lifting speed, with/without load - 111cc pump	ft/min	m/s	71	79	0.36	0.40	71	79	0.36	0.40	71	79	0.36	0.40	
	5-2-3	Lifting speed, with/without load - 126cc pump	ft/min	m/s	-		-		-		-		-		-		
	5-3	Lowering speed, with/without load	ft/min	m/s	106	94	0.54	0.48	106	94	0.54	0.48	106	94	0.54	0.48	
	5-5	Drawbar pull - 1 mph (1.6 km/h), with/without load	lb	kN	20,800	22,000	93	98	20,700	21,900	92	97	20,900	22,000	93	98	
	5-6	Drawbar pull - stall, with/without load	lb	kN	23,500	24,700	105	110	23,400	24,900	104	111	23,600	24,800	105	110	
	5-7	Gradeability - 1 mph (1.6 km/h), with/without load	%				33/31				31/29				34/35		
5-8	Gradeability stall, with load/without load	%				38/31				36/29				39/35			

H330XD | H360XD | H210XD48 SPECIFICATIONS

			HYSTER				HYSTER				HYSTER					
			H330XD		H360XD		H210XD48									
GENERAL	1-1	Manufacturer	HYSTER				HYSTER				HYSTER					
	1-2	Model designation	H330XD				H360XD				H210XD48					
	1-3	Powertrain/drivetrain	Diesel				Diesel				Diesel					
	1-4	Operator type	Seated				Seated				Seated					
	1-5	Rated load capacity	lb	kg	33,000	14,969	36,000	16,329	21,000	9,525						
	1-6	Load center	in	mm	24	610	24	610	48	1,219						
	1-8	Load distance	in	mm	35.0	889	35.0	889	35.0	889						
	1-9	Wheelbase	in	mm	130	3,300	130	3,300	130	3,300						
	WEIGHT	2-1	Total truck weight without load	lb	kg	39,788	18,048	42,165	19,126	38,847	17,621					
2-2		Axle loading with load, front/rear	lb	kg	67,205	5,583	30,484	2,532	71,955	6,209	32,638	2,816	54,659	5,188	24,793	2,353
2-3		Axle loading without load, front/rear	lb	kg	19,219	20,569	8,718	9,330	19,607	22,558	8,894	10,232	20,244	18,603	9,183	8,438
WHEELS	3-1	Tire type	Type	Pneumatic				Pneumatic				Pneumatic				
	3-2	Tire size, front	0	12.00-20 16PR				12.00-20 16PR				12.00-20 16PR				
	3-3	Tire size, rear	0	12.00-20 16PR				12.00-20 16PR				12.00-20 16PR				
	3-5	Number of tires, front/rear (X driven)	#	x4/2				x4/2				x4/2				
	3-6	Tread width, front	in	mm	72.5	1,842	72.5	1,842	72.5	1,842						
	3-7	Tread width, rear	in	mm	79.4	2,017	79.4	2,017	79.4	2,018						
	DIMENSIONS	4-1	Mast tilt, forward/back	Degrees	15F/12B				15F/12B				15F/12B			
4-2		Height of mast lowered	in	mm	141	3,568	141	3,568	141	3,568						
4-3		Freelift	in	mm	0	0	0	0	0	0						
4-4		Lift height (top of fork)	in	mm	147	3,750	147	3,750	147	3,750						
4-4-1		Lift height (bottom of fork)	in	mm	144	3,660	144	3,660	144	3,660						
4-5		Height, extended	in	mm	213	5,398	213	5,398	213	5,398						
4-7		Height to top of operator compartment (open cab)	in	mm	121.4	3,084	121.4	3,084	121.4	3,084						
4-7-1		Height, top of operator comp (closed cab)	in	mm	122.4	3,109	122.4	3,109	122.4	3,109						
4-7-2		Height, top of operator comp (closed cab w/ AC)	in	mm	122.4	3,109	122.4	3,109	122.4	3,109						
4-7-3		Height, top of operator comp (closed cab w/ strobe light)	in	mm	126.2	3,205	126.2	3,205	126.2	3,205						
4-7-4		Height, top of operator comp (closed cab w/ work lights)	in	mm	128.3	3,259	128.3	3,259	128.3	3,259						
4-7-5		Height, top of operator comp (closed cab w/ AC and strobe)	in	mm	127.4	3,236	127.4	3,236	127.4	3,236						
4-8		Seat height to seat point index (SIP)	in	mm	75	1,902	75	1,902	75	1,902						
4-19		Overall length	in	mm	268	6,812	268	6,812	292	7,422						
4-20		Length to load face	in	mm	196	4,983	196	4,983	196	4,983						
4-21		Overall width of truck	in	mm	100	2,540	100	2,540	100	2,540						
4-22		Fork dimension	in	mm	3.5/8/48	90/200/1,220	3.5/8/48	90/200/1,220	3.5/8/96	90/200/2,440						
4-23		Fork carriage type	Type	Standard pin type carriage				Standard pin type carriage				Standard pin type carriage				
4-24		Carriage width	in	mm	98.3	2,496	98.3	2,496	98.3	2,496						
4-25-1		Fork spread, min (in-in)	in	mm	2.8	70	2.8	70	2.8	70						
4-25-2		Fork spread, max (out-out)	in	mm	91.3	2,320	91.3	2,320	91.3	2,320						
4-30		Sideshift	in	mm	0	0	0	0								
4-31		Ground clearance, under mast w/o load	in	mm	9.6	245	9.6	245	9.6	245						
4-32	Ground clearance, center of wheelbase	in	mm	13.4	341	13.4	341	13.4	341							
4-34	Minimum aisle width (add load length & clearance)	in	mm	215	5,461	215	5,461	215	5,461							
4-35	Outside turning radius	in	mm	180	4,572	180	4,572	180	4,572							
Tier 4F			Cummins QSB 6.7L				Cummins QSB 6.7L				Cummins QSB 6.7L					
PERFORMANCE	5-1	Travel speed, with/without load	mph	km/h	17	18	27	29	17	18	27	29	17	18	27	29
	5-2-1	Lifting speed, with/without load - 90cc pump	ft/min	m/s	-	-	-	-	-	-	-	-	-	-	-	-
	5-2-2	Lifting speed, with/without load - 111cc pump	ft/min	m/s	-	-	-	-	-	-	-	-	-	-	-	-
	5-2-3	Lifting speed, with/without load - 126cc pump	ft/min	m/s	81	91	0.41	0.46	81	91	0.41	0.46	81	91	0.41	0.46
	5-3	Lowering speed, with/without load	ft/min	m/s	106	95	0.54	0.48	106	95	0.54	0.48	106	95	0.54	0.48
	5-5	Drawbar pull - 1 mph (1.6 km/h), with/without load	lb	kN	22,000	23,200	98	103	21,700	23,100	97	103	22,500	23,300	100	104
	5-6	Drawbar pull - stall, with/without load	lb	kN	24,800	26,100	110	116	24,600	24,600	109	109	25,300	26,200	113	117
	5-7	Gradeability - 1 mph (1.6 km/h), with/without load	%	34/33				31/32				43/36				
5-8	Gradeability stall, with load/without load	%	39/33				35/32				50/36					
Tier 3: Cummins QSB 6.7L			Cummins QSB 6.7L				Cummins QSB 6.7L				Cummins QSB 6.7L					
PERFORMANCE	5-1	Travel speed, with/without load	mph	km/h	17	18	27	29	17	18	27	29	17	18	27	29
	5-2-1	Lifting speed, with/without load - 90cc pump	ft/min	m/s	-	-	-	-	-	-	-	-	-	-	-	-
	5-2-2	Lifting speed, with/without load - 111cc pump	ft/min	m/s	71	79	0.36	0.40	71	79	0.36	0.40	71	79	0.36	0.40
	5-2-3	Lifting speed, with/without load - 126cc pump	ft/min	m/s	-	-	-	-	-	-	-	-	-	-	-	-
	5-3	Lowering speed, with/without load	ft/min	m/s	106	94	0.54	0.48	106	94	0.54	0.48	106	94	0.54	0.48
	5-5	Drawbar pull - 1 mph (1.6 km/h), with/without load	lb	kN	20,700	22,000	92	98	20,500	21,900	91	97	21,200	22,000	94	98
	5-6	Drawbar pull - stall, with/without load	lb	kN	23,500	24,700	105	110	23,200	24,600	103	109	24,000	24,800	107	110
	5-7	Gradeability - 1 mph (1.6 km/h), with/without load	%	32/33				29/32				41/36				
5-8	Gradeability stall, with load/without load	%	37/33				33/32				46/36					

H230XD48 | H250XD48 SPECIFICATIONS

		HYSTER				HYSTER							
		H230XD48				H250XD48							
GENERAL	1-1	Manufacturer		HYSTER				HYSTER					
	1-2	Model designation		H230XD48				H250XD48					
	1-3	Powertrain/drivetrain		Diesel				Diesel					
	1-4	Operator type		Seated				Seated					
	1-5	Rated load capacity	lb	kg	23,000	10,433	25,000	11,340					
	1-6	Load center	in	mm	48	1,219	48	1,219					
	1-8	Load distance	in	mm	35.0	889	35.0	889					
	1-9	Wheelbase	in	mm	130	3,300	130	3,300					
	WEIGHT	2-1	Total truck weight without load		lb	kg	40,339	18,297	42,048	19,073			
2-2		Axle loading with load, front/rear		lb	kg	57,729	5,611 26,185 2,545	61,140	5,908 27,733 2,680				
2-3		Axle loading without load, front/rear		lb	kg	20,035	20,304 9,088 9,210	20,169	21,879 9,149 9,924				
WHEELS	3-1	Tire type		Pneumatic				Pneumatic					
	3-2	Tire size, front		0 12.00-20 16PR				12.00-20 16PR					
	3-3	Tire size, rear		0 12.00-20 16PR				12.00-20 16PR					
	3-5	Number of tires, front/rear (X driven)		# x4/2				x4/2					
	3-6	Tread width, front	in	mm	72.5	1,842	72.5	1,842					
	3-7	Tread width, rear	in	mm	79.4	2,018	79.4	2,018					
	DIMENSIONS	4-1	Mast tilt, forward/back		Degrees 15F/12B				15F/12B				
4-2		Height of mast lowered		in	mm	141	3,568	141	3,568				
4-3		Freelift		in	mm	0	0	0	0				
4-4		Lift height (top of fork)		in	mm	147	3,750	147	3,750				
4-4-1		Lift height (bottom of fork)		in	mm	144	3,660	144	3,660				
4-5		Height, extended		in	mm	213	5,398	213	5,398				
4-7		Height to top of operator compartment (open cab)		in	mm	121.4	3,084	121.4	3,084				
4-7-1		Height, top of operator comp (closed cab)		in	mm	122.4	3,109	122.4	3,109				
4-7-2		Height, top of operator comp (closed cab w/ AC)		in	mm	122.4	3,109	122.4	3,109				
4-7-3		Height, top of operator comp (closed cab w/ strobe light)		in	mm	126.2	3,205	126.2	3,205				
4-7-4		Height, top of operator comp (closed cab w/ work lights)		in	mm	128.3	3,259	128.3	3,259				
4-7-5		Height, top of operator comp (closed cab w/ AC and strobe)		in	mm	127.4	3,236	127.4	3,236				
4-8		Seat height to seat point index (SIP)		in	mm	75	1,902	75	1,902				
4-19		Overall length		in	mm	292	7,422	292	7,422				
4-20		Length to load face		in	mm	196	4,983	196	4,983				
4-21		Overall width of truck		in	mm	100	2,540	100	2,540				
4-22		Fork dimension		in	mm	3.5/8/96	90/200/2,440	3.5/8/96	90/200/2,440				
4-23		Fork carriage type		Type Standard pin type carriage				Standard pin type carriage					
4-24		Carriage width		in	mm	98.3	2,496	98.3	2,496				
4-25-1		Fork spread, min (in-in)		in	mm	2.8	70	2.8	70				
4-25-2		Fork spread, max (out-out)		in	mm	91.3	2,320	91.3	2,320				
4-30		Sideshift		in	mm	0	0	0	0				
4-31		Ground clearance, under mast w/o load		in	mm	9.6	245	9.6	245				
4-32	Ground clearance, center of wheelbase		in	mm	13.4	341	13.4	341					
4-34	Minimum aisle width (add load length & clearance)		in	mm	215	5,461	215	5,461					
4-35	Outside turning radius		in	mm	180	4,572	180	4,572					
Tier 4F													
PERFORMANCE	5-1	Travel speed, with/without load		mph	km/h	17	18	27	29	17	18	27	29
	5-2-1	Lifting speed, with/without load - 90cc pump		ft/min	m/s	-	-	-	-	-	-	-	-
	5-2-2	Lifting speed, with/without load - 111cc pump		ft/min	m/s	-	-	-	-	-	-	-	-
	5-2-3	Lifting speed, with/without load - 126cc pump		ft/min	m/s	81	91	0.41	0.46	81	91	0.41	0.46
	5-3	Lowering speed, with/without load		ft/min	m/s	106	95	0.54	0.48	106	95	0.54	0.48
	5-5	Drawbar pull - 1 mph (1.6 km/h), with/without load		lb	kN	22,200	23,200	99	103	22,200	23,100	99	103
	5-6	Drawbar pull - stall, with/without load		lb	kN	25,100	26,100	112	116	25,100	26,000	112	116
	5-7	Gradeability - 1 mph (1.6 km/h), with/without load		% 38/34				38/33					
5-8	Gradeability stall, with load/without load		% 44/34				43/33						
Tier 3: Cummins QSB 6.7L													
PERFORMANCE	5-1	Travel speed, with/without load		mph	km/h	17	18	27	29	17	18	27	29
	5-2-1	Lifting speed, with/without load - 90cc pump		ft/min	m/s	-	-	-	-	-	-	-	-
	5-2-2	Lifting speed, with/without load - 111cc pump		ft/min	m/s	71	79	0.36	0.40	71	79	0.36	0.40
	5-2-3	Lifting speed, with/without load - 126cc pump		ft/min	m/s	-	-	-	-	-	-	-	-
	5-3	Lowering speed, with/without load		ft/min	m/s	106	94	0.54	0.48	106	94	0.54	0.48
	5-5	Drawbar pull - 1 mph (1.6 km/h), with/without load		lb	kN	21,000	22,000	93	98	20,900	21,900	93	97
	5-6	Drawbar pull - stall, with/without load		lb	kN	23,700	24,700	105	110	23,700	24,600	105	109
	5-7	Gradeability - 1 mph (1.6 km/h), with/without load		% 36/34				35/33					
5-8	Gradeability stall, with load/without load		% 41/34				40/33						

POWERTRAINS

POWERTRAINS									
GENERAL	1-1	Manufacturer							
	1-2	Model designation		H300-360XD(S), H210-250XD48					
	1-3	Powertrain/drivetrain		Diesel		Diesel			
ENGINE	7-1	Engine Manufacture/model		Cummins/QSB 6.7L		Cummins/QSB 6.7L			
	7-1a	EPA Tier Compliance		Tier 3/Stage IIIA		Tier 4/Stage IV			
	7-2	Engine power output - rated	hp	kW	156@2300	116@2300	164@2300	122@2300	
	7-2-1	Engine power output - peak	hp	kW	156@2300	116@2300	168@2100	125@2100	
	7-3	Rated speed	rpm		2,300		2,300		
	7-3a	Peak speed	rpm		2,300		2,100		
	7-3-1	Engine torque @ rpm (1/min)	lb-ft	N-m	440@1500	597@1500	540@1500	732@1500	
	7-4	Number of cylinders/displacement	#/in3	#/cm3	6/409	6/6700	6/409	6/6700	
	x	Turbocharger	Type		Wastegate, Water cooled		Variable Geometry, Water cooled		
	7-8	Alternator output	Amps		120		120		
	7-9	Electrical system voltage	V		24		24		
	7-10	Battery voltage/nominal capacity	V/Ah		24/102		24/102		
	8-0	Drive control/transmission	Type		Powershift Transmission		Powershift Transmission		
	DRIVE	8-1	Type of drive unit	Type		Torque Converter		Torque Converter	
		8-2	Transmission manufacturer/type	Type		ZF/3WG161		ZF/3WG161	
8-2-1		Transmission speeds forward/reverse	#		3/3		3/3		
8-3		Wheel drive/drive axle manufacturer/type	Type		Kessler/D81		Kessler/D81		
8-4		Service brake	Type		Oil immersed (wet) disc		Oil immersed (wet) disc		
8-5		Parking brake	Type		Spring apply, dry disc on drive axle		Spring apply, dry disc on drive axle		
MISC	10-1	Operating pressure for attachments	psi	MPa	3,263	23	3,263	23	
	10-2	Oil flow for attachments	gpm	l/m	26.4	100	26.4	100	
	10-3	Hydraulic oil tank, capacity	gal	l	32	121	32	121	
	10-4	Fuel tank, capacity	gal	l	40	151	40	151	
	10-4-1	DEF tank, capacity	gal	l	N/A	N/A	5	19	
	10-5	Steering design	Type		Hydraulic power steering		Hydraulic power steering		
	10-6	Number of steering rotation	#		5		5		
	10-8	Towing coupling, type DIN	Type		Pin		Pin		

NOTES:

Specifications are affected by the condition of the vehicle and how it is equipped, as well as the nature and condition of the operating area. Inform your dealer of the nature and condition of the intended operating area when purchasing your Hyster® truck.

All capacities are according to ANSI B56.

Specification data is based on VDI 2198.



Safety: This truck conforms to the current ANSI requirements.

NOTICE:

Care must be exercised when handling elevated loads. Operators must be trained and must read, understand and follow the instructions contained in the Operating Manual.

All values are nominal values and they are subject to tolerances. For further information, please contact the manufacturer.

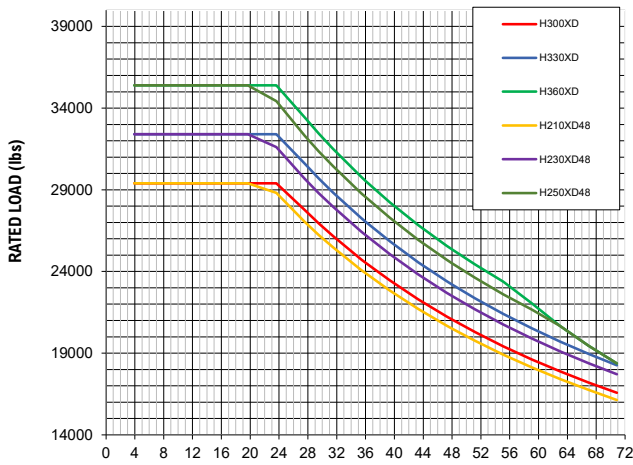
Hyster products are subject to change without notice.

Lift trucks illustrated may feature optional equipment. Values may vary with alternative configurations.

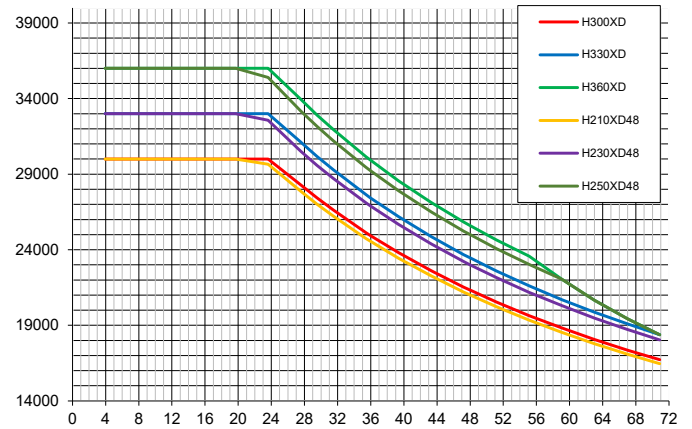
CERTIFICATION: Hyster lift trucks meet the design and construction requirements of B56.1-1969, per OSHA Section 1910.178(a)(2), and also comply with the B56.1 revision in effect at time of manufacture. Certification of compliance with the applicable ANSI standards appears on the lift truck. Performance specifications are for a truck equipped as described under Standard Equipment on this Technical Guide. Performance specifications are affected by the condition of the vehicle and how it is equipped, as well as by the nature, condition of the operating area, proper service and maintenance of the vehicle. If these specifications are critical, the proposed application should be discussed with your dealer.

NOTE: Specifications, unless otherwise listed, are for a standard truck without optional equipment.

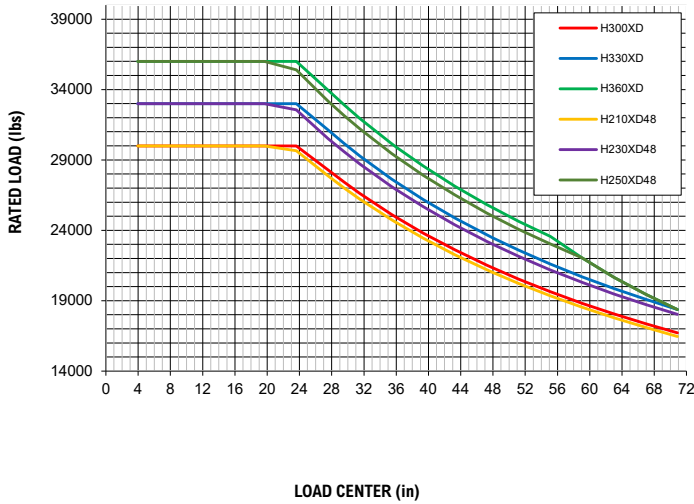
RATED LOAD VS. LOAD CENTER | DF-SS-FP CARRIAGE | U.S. CUSTOMARY



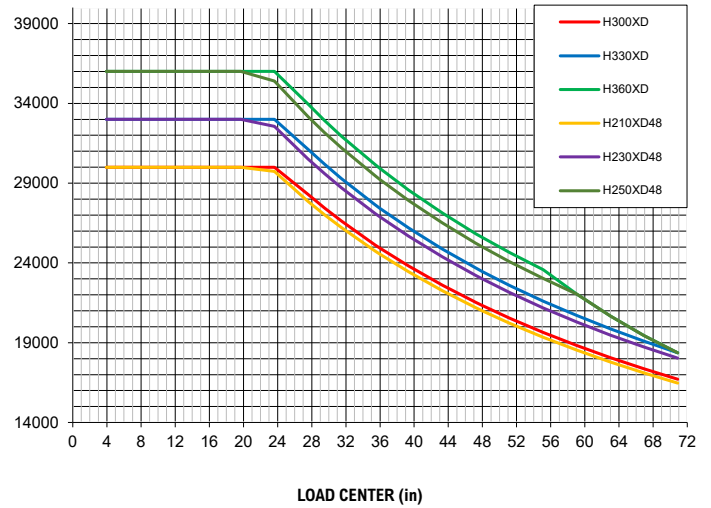
RATED LOAD VS. LOAD CENTER | STD PIN TYPE | U.S. CUSTOMARY



RATED LOAD VS. LOAD CENTER | STD PIN TYPE WITH FP | U.S. CUSTOMARY



RATED LOAD VS. LOAD CENTER | SIDE SHIFT PIN TYPE WITH FP | U.S. CUSTOMARY



FEATURES AND OPTIONS

PERFORMANCE	STD	OPT
Cummins QSB 6.7L Tier 4F diesel engine 164 hp (122 kW)*	x	
Cummins QSB 6.7L Tier 3 diesel engine 156 hp (116 kW)*	x	
Tier 4/Stage IV compliant	x	
Tier 3/Stage IIIA compliant	x	
Wastegate turbocharger, water cooled - Tier 3/Stage IIIA	x	
Variable geometry turbocharger, water cooled - Tier 4	x	
Delayed engine shutdown for turbo cooldown		x
On-demand cooling fan	x	
120 amp alternator	x	
Performance modes selectable in Integrated Performance Display	x	
Powertrain protection system	x	
Heavy duty air intake	x	
Heavy duty air intake (raised)		x
Low mount exhaust (below chassis)	x	
High mount exhaust		x
ZF Transmission WG161 3-speeds fwd/3-speeds reverse auto-shifting	x	
Kessler D81 drive axle with wet disc brakes	x	
DRIVE	STD	OPT
Travel speed limiter - unconditional and customer adjustable		x
Travel speed limiter - loaded (adjustable)		x
12.00 - 20 20PR Trelleborg pneumatic bias ply drive and steer tires	x	
12.00 - R20 Michelin XZM radial drive and steer tires		x
12.00 - R20 Trelleborg radial drive and steer tires		x
12.00 - 20 Pneumatic shaped solid drive and steer tires		x
LIFT	STD	OPT
111cc Dual Pump Hydraulic System*	x	
126cc Dual Pump Hydraulic System*	x	
On-Demand Load Sensing Hydraulic System	x	
Automatic throttle-up when lifting (in neutral or inching)	x	
Variable lap mast for low roller forces	x	
2-stage non free lift mast	x	
2-stage full free lift mast		x
3-stage full free lift mast		x
Mast tilt - 5° forward/6° back		x
Mast tilt - 5° forward/12° back		x
Mast tilt - 15° forward/10° back		x
Mast tilt - 15° forward/12° back	x	
Mast tilt - 20.5° forward/7° back		x
Mast Tilt Indicator - mechanical		x
Hydraulic Accumulator		x
Pressure compensated lowering		x
Hydraulic system temperature protection with performance de-rate		x
HANDLING	STD	OPT
98.3" (2496 mm) pin type carriage with mechanical fork locks	x	
98.3" (2496 mm) pin type carriage with simultaneous and independent fork positioner		x
98.3" (2496 mm) pin type apron-style sideshift carriage		x

HANDLING (continued)	STD	OPT
98.4" (2500 mm) pin type apron-style sideshift carriage with simultaneous fork positioner		x
98.3" (2496 mm) pin type apron-style sideshift carriage with simultaneous and independent fork positioner		x
98.3" (2498 mm) QD hook type dual function sideshift carriage with simultaneous and Independent fork positioner		x
98.3" (2498 mm) QD hook type dual function sideshift carriage with simultaneous fork positioner and 2 auxiliary functions		x
72" (1824 mm) high load backrest		x
80" (2040 mm) high load backrest		x
98" (2500 mm) high load stabilizer (for lumber applications)		x
72" long x 3.5" thick x 7.9" wide (1830 mm x 90 mm x 200 mm) forks	x	
Pin type forks (various sizes)		x
Pin type forks for lumber applications		x
Hook type quick disconnect DFSSFP forks (various sizes)		x
ERGONOMICS	STD	OPT
Open operator compartment (without doors & screens)	x	
Enclosed operator cabin		x
Manual tilt operator compartment for service	x	
Powered tilt operator compartment for service		x
Isolated cabin mounting for low noise and vibration	x	
Operator presence system	x	
Mechanical suspension seat	x	
Air suspension seat		x
Deluxe air suspension seat		x
Low backrest seat	x	
High backrest seat		x
Armrest on left side		x
Cloth seat cover		x
Vinyl seat cover	x	
Seat heating		x
Seat ventilation		x
2-point high visibility seatbelt	x	
Lateral seat sliding mechanism		x
Floor mat	x	
Coat hook	x	
Front, top and rear wipers		x
"H"-pattern front wiper (enclosed operator cabin)		x
"I"-pattern front wiper (enclosed operator cabin)		x
Laminated glass operator compartment front window		x
Tinted operator compartment windows (doors, rear and top window)		x
Tinted operator compartment top window		x
Lexan top window		x
Plexiglass shield in front of front window		x
Wire mesh installed on top of operator compartment		x
Vertical steel bar front window guard		x
Operator shield wire mesh		x
7" Integrated Performance Display	x	

*Standard or Optional in select markets or on select models. Other options available through Special Products Engineering Department (SPED). Contact Hyster for details.

FEATURES AND OPTIONS

ERGONOMICS (continued)	STD	OPT
Touchpoint™ mini levers hydraulic control integrated in Control Arm	x	
Joystick hydraulic control integrated in Control Arm		x
Steering wheel without spinner knob	x	
Steering wheel with spinner knob		x
Directional control lever on steering column	x	
Hyster Monotrol® pedal directional control		x
Directional control on mini-levers or joystick		x
Park brake - push button applied	x	
Park brake - automatically applied		x
Heater with adjustable speed fan (enclosed operator cabin)		x
Telescoping & tilting steering column	x	
USB outlet inside armrest	x	
24-12 volt DC converter with 1 socket and 2 USB outlets	x	
24-12 volt DC converter with 2 sockets and 2 USB outlets		x
Air conditioning		x
Automatic climate control		x
Reading light		x
Sun shades on top and rear		x
Sun visors front window		x
Trainer seat		x
Recirculation fan		x
Additional recirculation fan		x
Accessory mounting bracket on cab front right pillar		x
Document holder on cab front right pillar		x
Heated top- and/or rear window		x
Radio preparation set-up (wiring, two speakers and antenna)		x
VISIBILITY	STD	OPT
Steel bars on top of cab (open operator compartment)	x	
Top window with armored glass (enclosed operator cabin)	x	
Steel bars under armored glass top window (enclosed operator cabin)		x
Interior wide angle mirrors	x	
Exterior mirrors mounted to cab		x
Rear view camera system		x
Radar object detection system		x
Halogen work lights		x
High Performance LED work lights		x
Two head lights mounted on front fenders		x
Four mast mounted work lights		x
Four cabin mounted work lights		x
Two rearward work lights mounted on the cabin		x
LED stop/tail/brake lights	x	
Turn signals, hazard & marker lights (LED)		x

OPERATION	STD	OPT
Air horn 112 dBA		x
Electric horn 105 dBA	x	
Visible alarm – Amber strobe light, ignition activated		x
Audible alarm – Reverse direction activated 82–102 dB(A), self-adjusting		x
Audible alarm – Reverse direction white noise		x
Forward/reverse motion alarm		x
Blue LED spotlight – rear/front and rear		x
Air conditioning shut-off with open door		x
Automatic engine shutdown with timer		x
Lockable battery disconnect switch		x
Battery jump start connector (NATO plug)		x
Truck start with key switch and start button	x	
Operator password (display) for truck start	x	
Seatbelt interlock for truck start		x
Power distribution group with fuses	x	
Fuses below 30 amps replaced by electric circuit breakers		x
Non-lockable fuel cap	x	
Lockable fuel cap		x
Fuel strainer in fuel filler neck		x
Hyster Tracker™ wireless asset management system	x	
Hyster Tracker™ wireless asset management - access/verification		x
Hyster Tracker™ wireless asset management - monitoring		x
Auto greasing system for base truck		x
24 volt electrical system	x	
Engine block heater 110 or 240 volt		x
Steer wheel lug nut protection		x
Front mud flaps		x
Rear mud flaps		x
Lifting eyes - 2 front and 2 rear		x
Wire mesh belly pan		x
Wire mesh and plates belly pan		x
APPEARANCE	STD	OPT
Second capacity plate		x
Hyster yellow paint base truck	x	
Special paint base truck		x
Operator compartment special paint (outside only)		x
Hazard warning striping on counterweight		x
SUPPLEMENTAL	STD	OPT
Literature package	x	
Operator's manual	x	
CE certification		x
U.L. Label - Standard Construction	x	
Warranty: 12 months /2,000 hours parts & labor manufacturer's warranty*	x	
Warranty: 12 months/2,000 hours parts manufacturer's warranty*	x	

*Standard or Optional in select markets or on select models. Other options available through Special Products Engineering Department (SPED). Contact Hyster for details.

FRONT END EQUIPMENT

RANGE OF 2 STAGE NFL MASTS



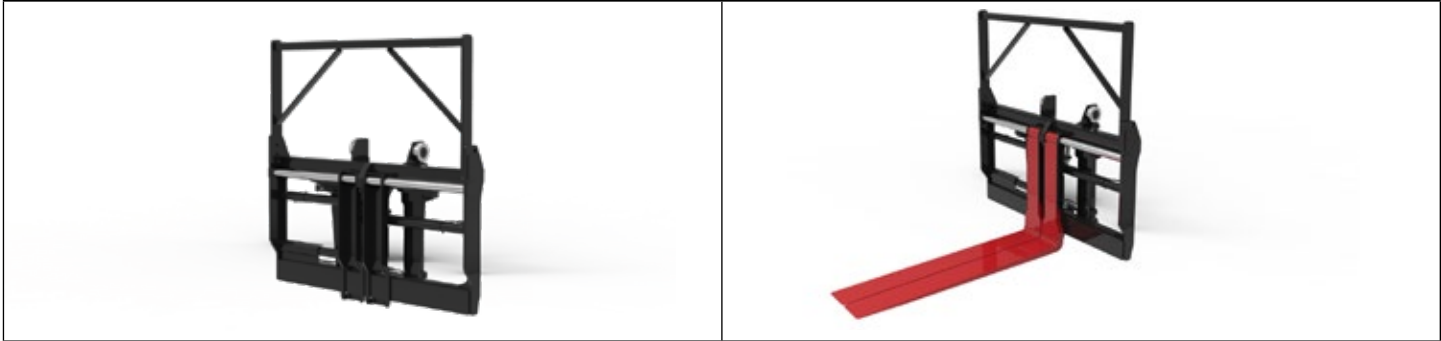
RANGE OF PIN TYPE AND HOOK TYPE FORKS



98.5" PIN TYPE STANDARD CARRIAGE



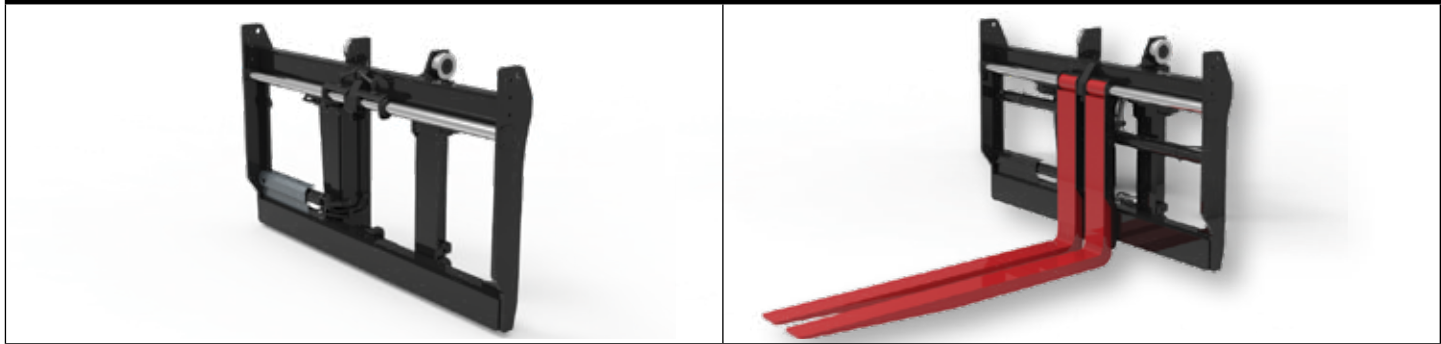
98.5" PIN TYPE APRON STYLE SIDESHIFT CARRIAGE WITH SIMULTANEOUS AND INDEPENDENT FORK POSITIONER (FOR LUMBER APPLICATIONS)



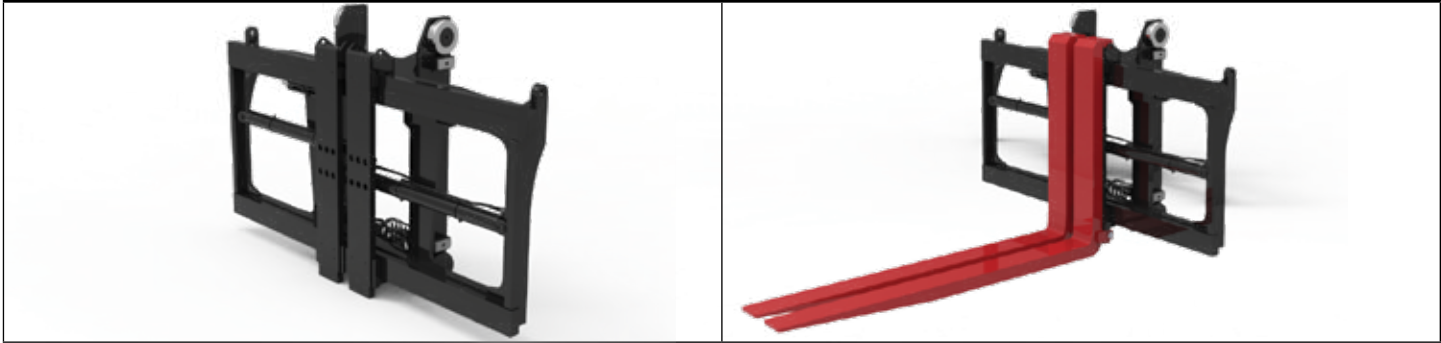
98.5" PIN TYPE CARRIAGE WITH SIMULTANEOUS AND INDEPENDENT FORK POSITIONER



98.5" PIN TYPE APRON STYLE SIDESHIFT CARRIAGE




98.5" QD HOOK TYPE DUAL FUNCTION SIDESHIFT WITH SIMULTANEOUS AND INDEPENDENT FORK POSITIONER





Hyster Company
P.O. Box 7006, Greenville, North Carolina 27835-7006

© Hyster Company. 2022, all rights reserved. Hyster and  are trademarks of Hyster-Yale Group, Inc.

Hyster products are subject to change without notice.
Trucks may be shown with optional equipment and/or features not available in all regions.