



**STRONG PARTNERS.  
TOUGH TRUCKS.™**

# SL30UT

**ELECTRIC WALKIE STACKER**

[WWW.HYSTER.COM](http://WWW.HYSTER.COM)

## > SL30UT OVERVIEW

The Hyster® electric walkie stacker SL30UT is designed for productivity and flexibility. Combining simple to use controls for easy maneuverability, and technology features to maximize operator performance.

### Productivity

- Maintenance-free AC motors
- Multi-function display with BDI and hour meter
- Handle equipped with emergency reversing button
- Auto deceleration function
- Low speed switch
- Variable speed control
- Side battery removal with rollers
- Mast cushioning for low-noise operation
- Built-in pressure relief valve helps protect from overloads
- Emergency power disconnect switch
- 240Ah traction battery
- Cold storage configuration (option)

### Optimum Structural Design

- Low center of gravity helps enhance stability
- Full free lift mast options for low overhead clearance
- Durable plastic covers
- Adjustable balance caster wheel helps improve stability

### Serviceability

- Low voltage protection setting extends the battery life
- CANbus technology
- Simple electronic components make troubleshooting and servicing more efficient
- Hall effect sensors reduce wear and helps to increase component life

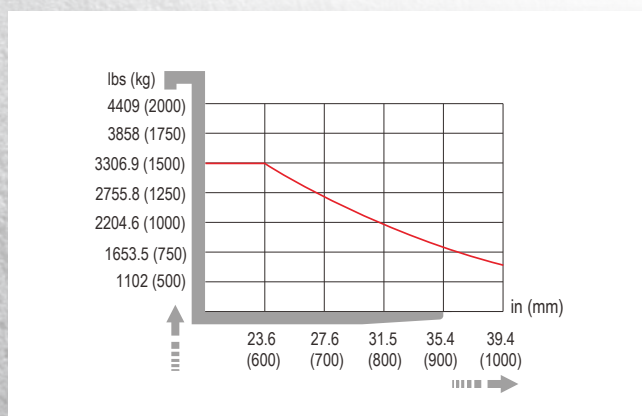


Tiller handle (standard)  
(left & right handed)

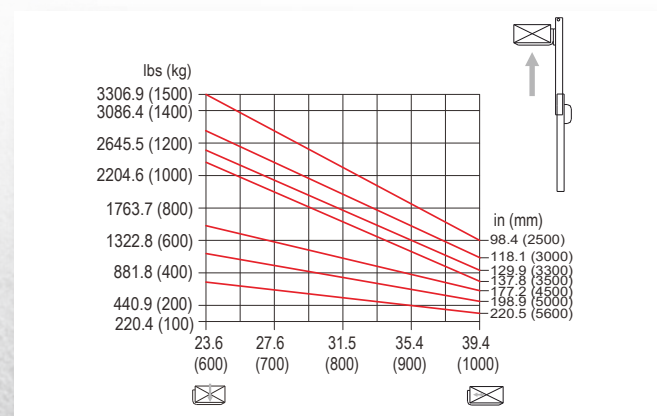


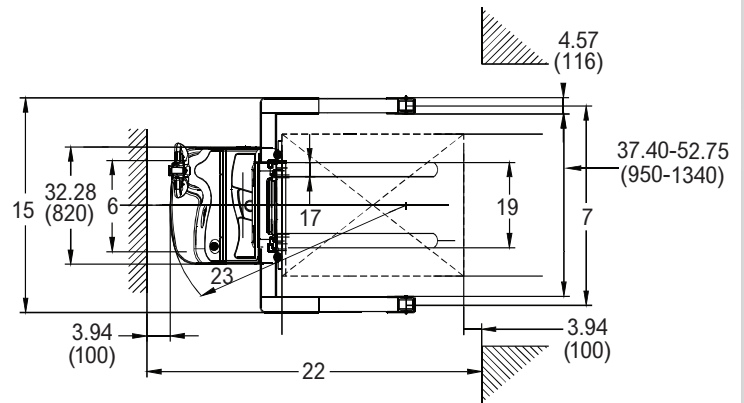
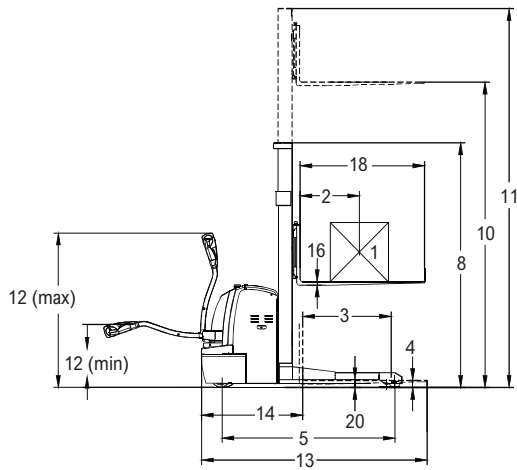
Adjustable straddle legs

### LOAD CENTER CHART



### LOAD CAPACITY CHART






MODEL	SL30UT							
Load capacity	[1] lbs (kg)	3,300 (1500)						
Load center distance	[2] in (mm)	24 (600)						
Load distance, center of drive axle to fork	[3] in (mm)	27.5 (697)						
Fork height, lowered	[4] in (mm)	2.75 (70)						
Wheelbase	[5] in (mm)	60 (1420)						
Axle loading, laden front / rear	lbs (kg)	3,175 / 2,825 (1440 / 1280)						
Axle loading, unladen front / rear	lbs (kg)	1,920 / 775 (870 / 350)						
Tires		polyurethane						
Tire size, front	in (mm)	10 (250) x 2.75 (70)						
Tire size, rear	in (mm)	3.25 (80) x 3.5 (84)						
Additional wheels (dimensions)	in (mm)	6 (150) x 2.5 (60)						
Wheels, number front rear (x=driven wheels)		1x+1/4						
Tread, front	[6] in (mm)	20.5 (520)						
Tread, rear	[7] in (mm)	41 - 56.5 (1,040-1,430)						
Mast height, lowered	[8] in (mm)	71 (1,805)	81 (2,055)	87 (2,205)	91 (2,305)	84 (2,120)	90 (2,280)	98 (2,480)
Free lift	in (mm)	51.5 (1,300)	61 (1,550)	67 (1,700)	71 (1,800)	62 (1,570)	58.5 (1,740)	76.5 (1,940)
Max. lift height	[10] in (mm)	98.5 (2,500)	118.25 (3,000)	130 (3,300)	138 (3,500)	177.25 (4,500)	197 (5,000)	220.5 (5,600)
Mast height, extended	[11] in (mm)	119 (3,025)	139 (3,525)	151 (3,825)	158.5 (4,025)	200 (5,080)	219 (5,560)	242.5 (6,160)
Height of tiller in drive position min. / max.	[12] in (mm)	26.5 / 51 (670 / 1,300)						
Overall length	[13] in (mm)	78 (1,980)						
Length to face of forks	[14] in (mm)	36 (915)						
Overall width	[15] in (mm)	46 - 61.5 (1,170-1,560)						
Fork dimensions	[16 / 17 / 18] in (mm)	1.4 / 3.9 / 42.12 / 45.28 (35 / 100 / 1,070 / 1,150)						
Width overall forks	[19] in (mm)	8 - 31.5 (200-800)						
Ground clearance, center of wheelbase	[20] in (mm)	1.5 (35)						
Aisle width for pallets 1,000 x 1,200 crossways	[22] in (mm)	98 (2,480)						
Aisle width for pallets 800 x 1,200 lengthways	[22] in (mm)	97 (2,465)						
Turning radius	[23] in (mm)	63.5 (1,610)						
Travel speed, laden / unladen	mph (kph)	3.60 / 3.75 (5.8 / 6)						
Lift speed, laden / unladen	ft / min (m/s)	21.75 / 29.5 (0.11 / 0.15)						
Lowering speed, laden / unladen	ft / min (m/s)	23.5 / 23.5 (0.12 / 0.12)						
Max. gradeability, laden / unladen	%	8 / 15						
Service brake		Electromagnetic						
Battery voltage, nominal capacity K5	V/Ah	24 / 240						
Battery weight	lbs (kg)	530 (240)						
Battery dimensions l / w / h	in (mm)	26.5 x 10 x 19.75 (675 x 254 x 500)						
Sound lever at the driver's ear acc. to DIN12503	dB (A)	65						
Service weight (without battery)	lbs (kg)	2,601 / 2,657 / 2,690 / 2,715 / 2,825 / 2,870 / 2,910 (1,180 / 1,205 / 1,220 / 1,230 / 1,280 / 1,300 / 1,320)						



Hyster Company  
P.O. Box 7006  
Greenville, North Carolina  
27835-7006  
Part No. SL30UT-BTG  
10/2021 Litho in U.S.A.

Visit us online at [www.hyster.com](http://www.hyster.com) or call us at **1-800-HYSTER-1**.

© Hyster Company. 2021, all rights reserved. Hyster,  and STRONG PARTNERS. TOUGH TRUCKS. are trademarks of Hyster-Yale Group, Inc.

Hyster products are subject to change without notice. Trucks may be shown with optional equipment.

3021HBC3BC001\_E\_EN-US\_V2R2\_102021