

[WWW.HYSTER.COM](http://WWW.HYSTER.COM)

# **H8-9XD EC6-8, H9-11XD ECD7-9 EMPTY CONTAINER HANDLER PRODUCT BROCHURE**



# RELIABILITY IN EMPTY CONTAINER HANDLING

The Hyster® H8-9XD EC6-8 and H9-11XD ECD7-9 series benefits from over 50 years of heritage in container handling and spreader design. These empty container handling machines offer fast handling, reliable proven components, and give an excellent return on your investment.

Hyster H8-9XD EC6-8 and H9-11XD ECD7-9 empty container handlers can handle up to 11,000kg capacity, allowing the trucks to easily pick two 40-foot reefer units at once. These trucks are designed to perform and last while handling heavy double container loads. With components designed for double handling, imagine what they can do in your single handling application.

The productivity benefits that come from Hyster single or double spreader give you more options than ever to move additional containers in less time. Features such as powered pile slope, automatic extend-retract of the spreader, auto throttle up and true inching support safer, accurate and smooth positioning of containers – even up to 9-high.





# PERFORMANCE IS KEY

---

## STAGE V INTEGRATED POWERTRAIN

The Optional Stage V Mercedes 7.7L diesel engine delivers 180kW and 1000Nm of maximum torque, featuring cooled exhaust gas recirculation (EGR) technology with selective catalytic reduction (SCR) and an integrated diesel exhaust fluid (DEF) delivery system. A 2-stage diesel oxidation catalyst (DOC) is also included for particulate matter (PM) reduction.

Innovative selectable ECO performance modes, plus the 5-speed transmission and variable displacement pumps, offer excellent fuel economy and maximum productivity. Hibernate idle can also save fuel by lowering engine speed when functions are not being used.

Automatic engine shutdown saves fuel by shutting down the engine if the driver leaves the seat or the engine idles for too long, after a pre-set (adjustable) time. On-demand hydraulics keep oil temperature lower to protect hydraulic components. Plus an optional hydraulic temperature protection system is available to derate the truck when the temperature threshold is reached.

- The drive train protects itself from excessive temperatures and pressures:
  - high coolant temperatures and low levels
  - high air intake temperatures
  - low engine oil pressure
  - high transmission oil temperatures and low pressure
- Variable geometry turbocharger, water cooled
- Rugged and capable ZF 5-speed 5WG 211 powershift transmission with proven field experience and reliability
- 24V electrical system with 150 amp alternator
- Automatic throttle-up on hoist and tilt enables engine to operate in most efficient rpm range

### TIER 3

Cummins QSB 6-cylinder diesel engine delivers 172 kW and 949Nm of maximum torque.

- ZF 5-Speed 5WG 211 powershift transmission
- Wastegate turbocharger, water cooled
- Automatic throttle-up
- On-demand hydraulic system
- 24V electrical system with 120 amp alternator

## THE RIGHT SPREADER FOR YOUR OPERATION

A comprehensive selection of single and double handling spreaders are available, featuring vertical twistlocks or hook & side clamps, to suit your specific application. These spreaders allow operations to handle most common types of containers including ISO, WTP and domestic containers.

**Container sensing system supports safer handling when transporting two containers.**

**Centralized greasing on the spreader reduces the number of grease points for easier maintenance.**

**Smart camera systems are available for additional operator support.**

**Ample sideshift allows operators to easily reposition offset loads and handle two reefers with the gen set on the same side.**

**The innovative spreader design enables the operator to see the twistlocks or hooks in every load position.**

**The optional auto extend-retract feature further assists operators by adjusting the spreader to a 20ft or 40ft container size at the touch of a button.**



# OPERATOR COMFORT

**Hyster Company is known for tough lift trucks, but we're also recognized for ergonomically advanced lift trucks. A spacious, comfortable operator environment and an operator interface with ergonomically designed controls help elevate productivity while minimizing operator fatigue.**

The H8-9XD EC6-8, H9-11XD ECD7-9 series operator cab provides a spacious cockpit style cabin that keeps all truck information and controls within reach.

A variety of seat configurations are offered to suit operator preference including mechanical or air suspension, cloth or vinyl cover, and lumbar support. The air conditioning system can be pre-set for automatic climate control and the high and rear louvers provide direct air flow toward the operator.

The ergonomically designed, seat-mounted control arm is fully adjustable and includes a wrist cushion and redesigned joystick to help reduce fatigue when operating the hydraulics. The intuitive joystick, integrated in the armrest, is designed for simplicity to provide easy, precise operation of the mast and spreader. The modular design of the control arm makes it possible to cover almost any possible truck configuration while being easily serviceable. The reliable CANBUS controls all main components.

The 7" full color, touchscreen Integrated Performance Display shows all truck activity, allows for easy access to change or calibrate truck settings and is integrated with Hyster Tracker telemetry system.



*Optional seat shown.*



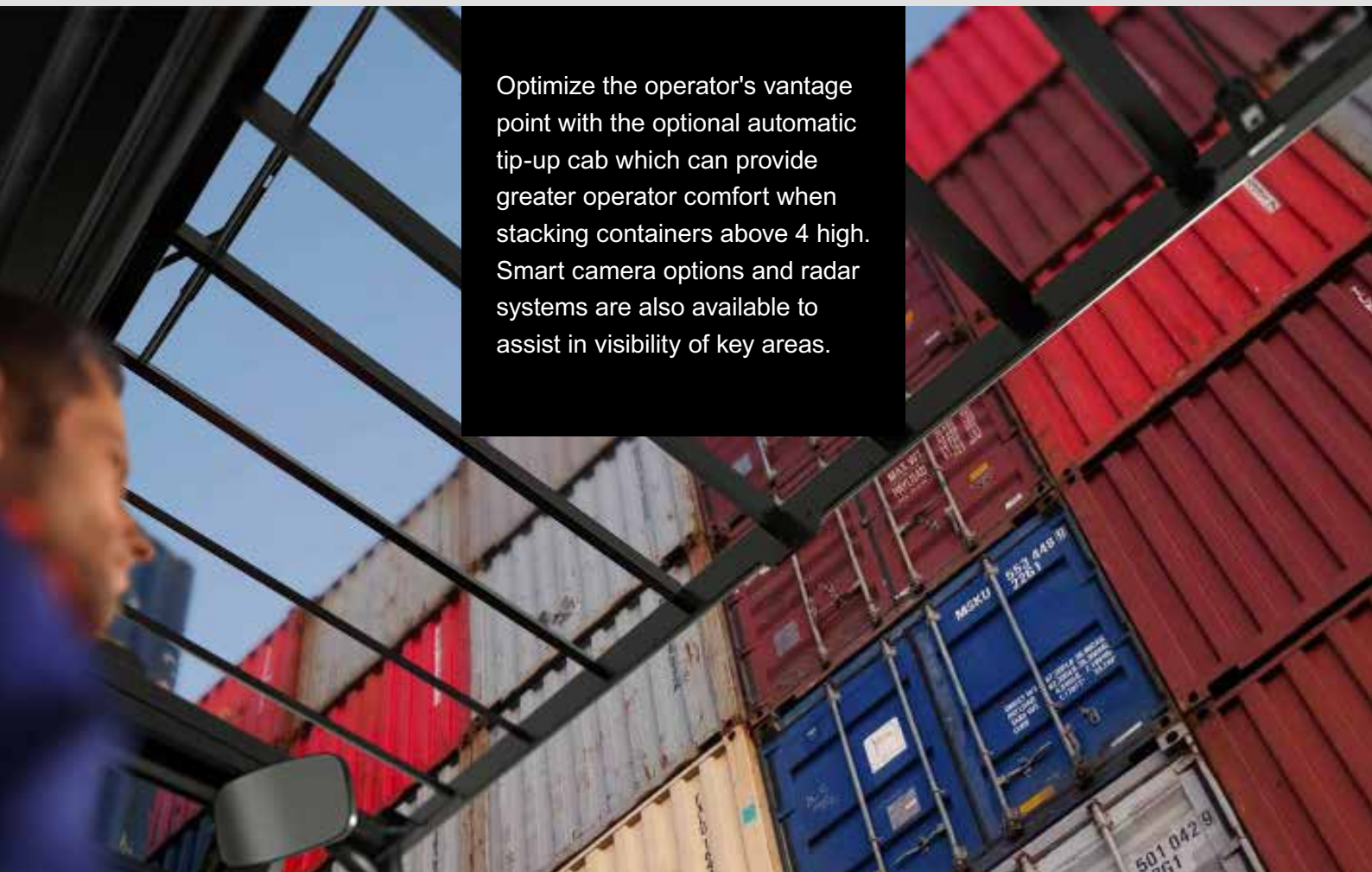
*Optional secondary display available specifically for double handling.*



## VISIBILITY

Superb visibility through the mast allows easy positioning of containers at any height for more precise and efficient load handling. Optional raised cabin allows the operator to view and inspect the top of the container when positioned on a chassis.

The cab's structural design, tempered top glass creates optimum visibility for container stacking. Rearward visibility is outstanding with the cab location engineering to enable sweeping views over both the left and right shoulder.



Optimize the operator's vantage point with the optional automatic tip-up cab which can provide greater operator comfort when stacking containers above 4 high. Smart camera options and radar systems are also available to assist in visibility of key areas.

# SIMPLIFIED SERVICEABILITY

Hyster® trucks have been designed with the service technician in mind. Easy access to the engine, hydraulics and other major components are enabled with a large hinged hood and lift off front covers. The tip back cabin provides ample service access to components located under the cabin.

Daily operator checks are completed with ease given the ready access to all checked items, filter indicators and sight glass on hydraulic oil tank. Preventative maintenance service interval is 500 hours. Hydraulic oil service interval can be extended to 10,000 hours using regular oil sampling. The integrated performance display offers high-level on-board diagnostics allowing for advanced and quick troubleshooting without having to connect a laptop to the truck.

## ADDITIONAL ENHANCEMENTS

- Broad, slip resistant running boards
- Optional utility toolbox and storage compartment
- The hydraulic oil tank features a sight glass and magnetic drain plugs for ease of maintenance
- Clean hydraulic hose and electrical harness routing and clamping

## AUTOMATIC GREASING

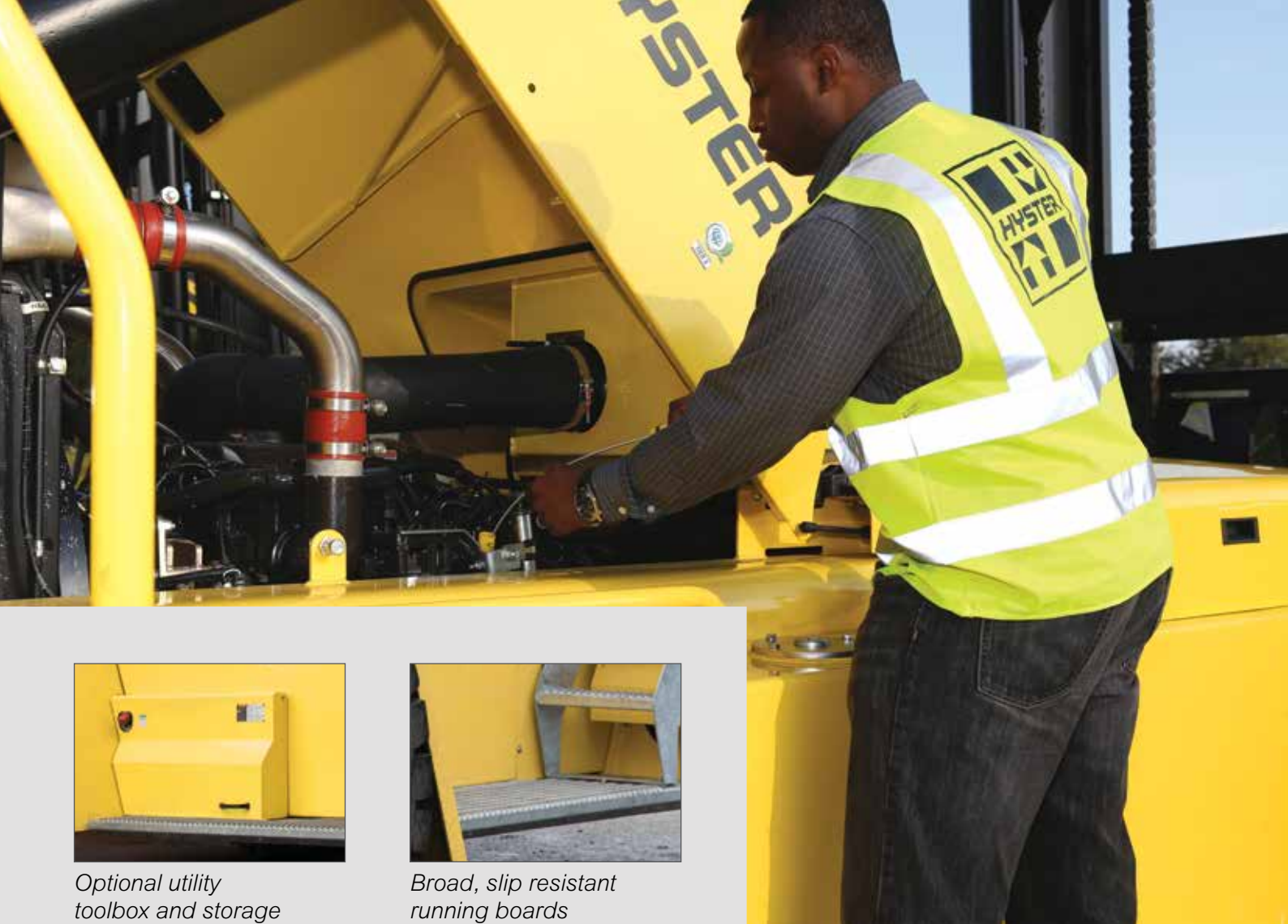
An optional automatic greasing system is available. Automatic greasing will significantly lower total cost of ownership by eliminating maintenance costs of manually greasing each component. By ensuring that greasing is completed, component service life can be extended.

## HYSTER TRACKER: WIRELESS ASSET MANAGEMENT

Take your fleet operation to the next level with wireless asset management from Hyster, standard on all Hyster Big Trucks. Hyster Tracker provides a scalable solution for fleets. From monitoring truck utilization to limiting operator access, Hyster Tracker allows you to track your fleet at your fingertips.







*Optional utility toolbox and storage compartment*



*Broad, slip resistant running boards*

## HEAVY DUTY PRODUCTIVITY

Hyster® H8-9XD EC6-8, H9-11XD ECD7-9 container handling trucks deliver high productivity.

For optimal performance and durability, the variable lap mast features:

- significantly lower load roller forces
- less mast deflection
- higher torsional rigidity
- heavy duty 2 chain system with large diameter sheaves

This design enhances structural strength, contributing to lower costs and reducing downtime.

*\*Average speed calculated using: laden lift speed at full rated capacity; unladen lift speed; laden lowering speed at full rated capacity; unladen lowering speed.*

### TRAVEL SPEEDS

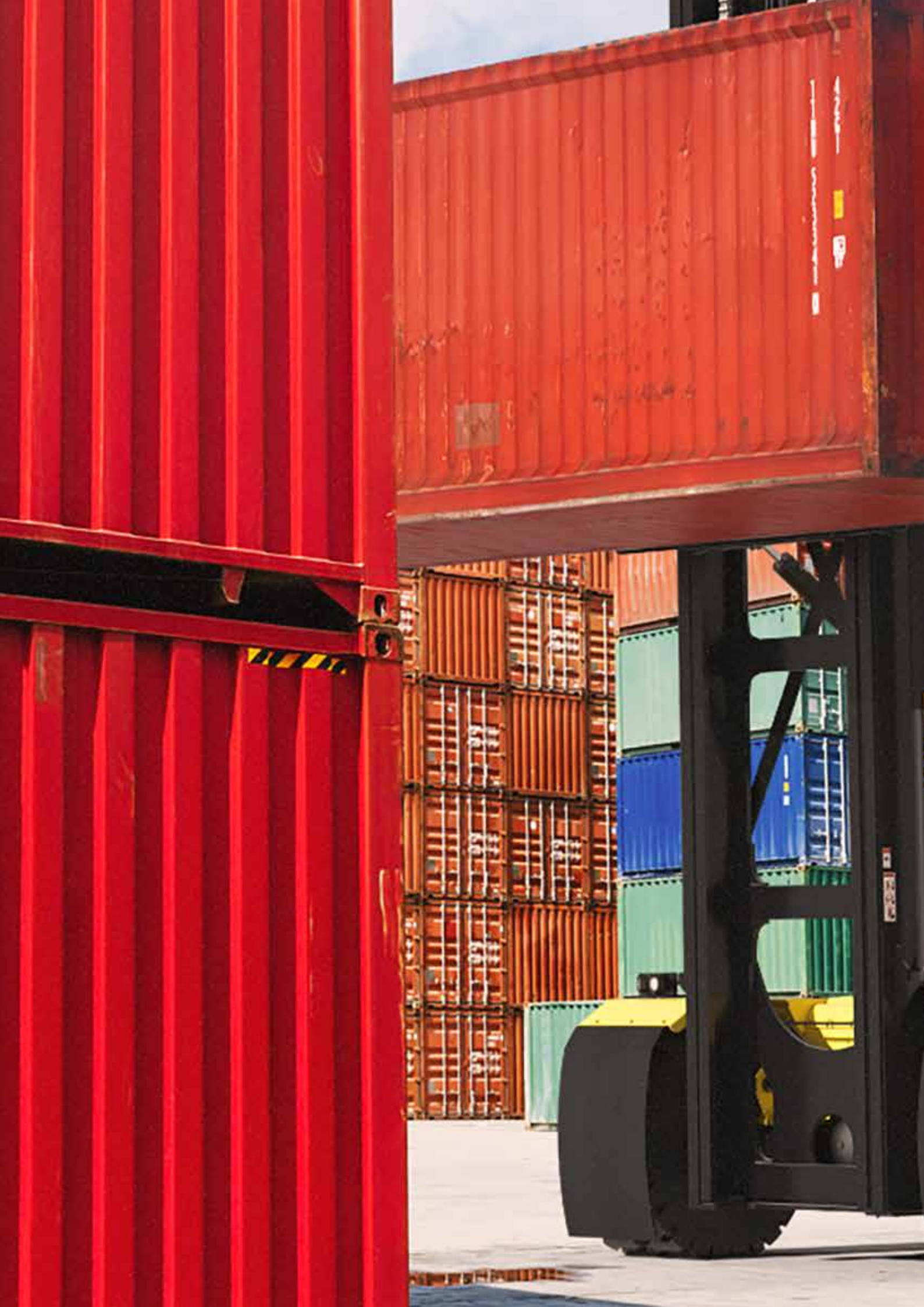
20 km/h - laden  
25 km/h - unladen

### LIFTING SPEEDS

0.51 m/s - laden  
0.67 m/s - unladen

### LOWERING SPEEDS

0.55 m/s - laden  
0.55 m/s - unladen





# HYSTER® DEALERS



Contact your nearest Hyster® Dealership  
by visiting [www.hyster.com](http://www.hyster.com)



## **Hyster Pacific**

1/23 Rowood Road, Prospect NSW 2148


Tel: +61 (2) 9795 3800 Fax: +61 (2) 9792 8484

## **Hyster Asia**

16 Tuas Avenue 20, Singapore 638827

Tel: +65 6863 3387 Fax: +65 6863 3349

Visit us online at [www.hyster.com](http://www.hyster.com)

© Hyster-Yale Asia-Pacific Pte. Ltd. 2023. All rights reserved. HYSTER, , and Strong Partners. Tough Trucks are trademarks of Hyster-Yale Group, Inc. Specifications and details in this brochure are subject to change without prior notification. Please consult with your Hyster dealer for the most up to date information and to confirm exact capacities.