



**STRONG PARTNERS.
TOUGH TRUCKS.™**

FORTENS™



IC COUNTERBALANCED LIFT TRUCKS

H4.0-5.5FT FORTENS & FORTENS ADVANCE

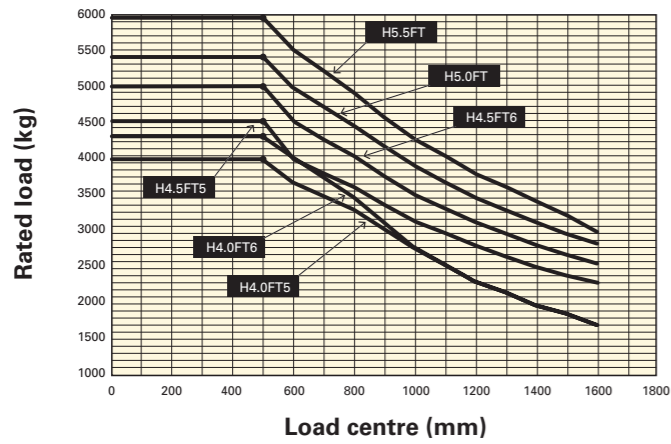
4 000-5 500 KG



TRUCK DIMENSIONS

RATED CAPACITIES

WITH STANDARD CARRIAGE

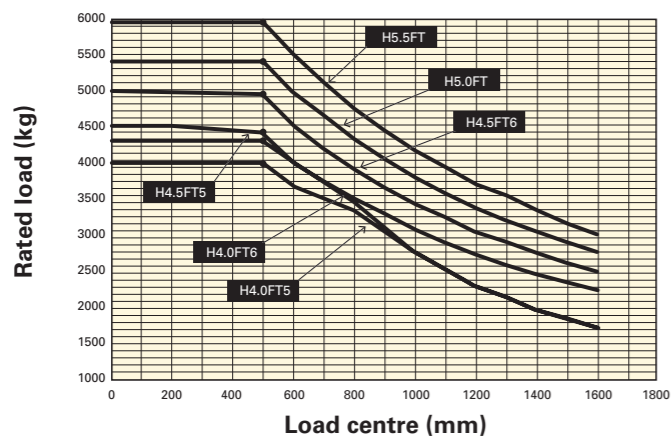


Load centre – Distance from front of forks to centre of gravity of load.

Rated load – Based on vertical masts up to 3 050 mm (H4.0FT) and 4 000 mm (H4.5-5.5FT).

Load center (mm)	H4.0FT5	H4.0FT6	H4.5FT5	H4.5FT6	H5.0FT	H5.5FT
0	4000	4300	4500	5000	5400	5950
200	4000	4300	4500	5000	5400	5950
500	4000	4300	4500	5000	5400	5950
600	3670	4000	4000	4500	5000	5500
800	3310	3450	3610	4030	4460	4900
1000	2760	2760	3150	3520	3900	4280
1200	2300	2300	2800	3130	3460	3800
1400	1970	1970	2520	2810	3110	3420
1600	1720	1720	2290	2560	2830	3000

WITH SIDESHIFT CARRIAGE



Load centre – Distance from front of forks to centre of gravity of load.

Rated load – Based on vertical masts up to 3 050 mm (H4.0FT) and 4 000 mm (H4.5-5.5FT).

Load center (mm)	H4.0FT5	H4.0FT6	H4.5FT5	H4.5FT6	H5.0FT	H5.5FT
0	4000	4300	4500	5000	5400	5950
200	4000	4300	4500	5000	5400	5950
500	4000	4300	4440	4970	5400	5950
600	3670	4000	4000	4500	5000	5500
800	3320	3450	3500	3920	4340	4770
1000	2760	2760	3070	3430	3800	4180
1200	2300	2300	2730	3050	3380	3720
1400	1970	1970	2460	2750	3050	3350
1600	1720	1720	2240	2500	2770	3000

Specification data based on 3050mm (H4.0FT5 - H4.0FT6) / 2800mm (H4.5FT5 - H5.5FT) TOF 2 stage LFL mast with standard carriage, load backrest, 1000mm (H4.0FT5) / 1200mm (H4.0FT6 - H5.5FT) forks, and pneumatic shaped solid tyres.

NOTE:

Specifications are affected by the condition of the vehicle and how it is equipped, as well as the nature and condition of the operating area. If these specifications are critical, the proposed application should be discussed with your dealer.

- ¶ Top of forks
- ◆ add 32mm with load backrest
- Full suspension seat in depressed position
- * Standard / wide / dual
- W/o load backrest, add 32mm with load backrest
- ◆ Stacking aisle width (lines 4.34 & 4.34.1 & 4.34.2) are based on the VDI standard calculation as shown on illustration. The British Industrial Truck Association recommends the addition of 100 mm to the total clearance (dimension a) for extra operating margin at the rear of the truck
- at 1.6 km/h
- † at 4.8km/h. Gradeability figures are provided for comparison of tractive performance, but are not intended to endorse the operation of the vehicle on the stated inclines. Follow instructions in the operating manual regarding operation on inclines.
- ⇄ to 15m (per VDI 2198 December 2012)
- ± Variable
- With and without cab.
- ◇ Lpaz, Measured according to the test cycles and based on the weighting values contained in EN12053
- ◇ Lwaz, Measured according to the test cycles and based on the weighting values contained in EN12053

MAST TABLES:

- ▽ Without load backrest
- ◆ With load backrest
- Wide tread or Dual Drive Wheels required
- * Dual Drive Wheels required

POWERTRAINS TABLE:

- Battery ampere hour (Ah) nominal capacity ratings are estimated.

NOTICE

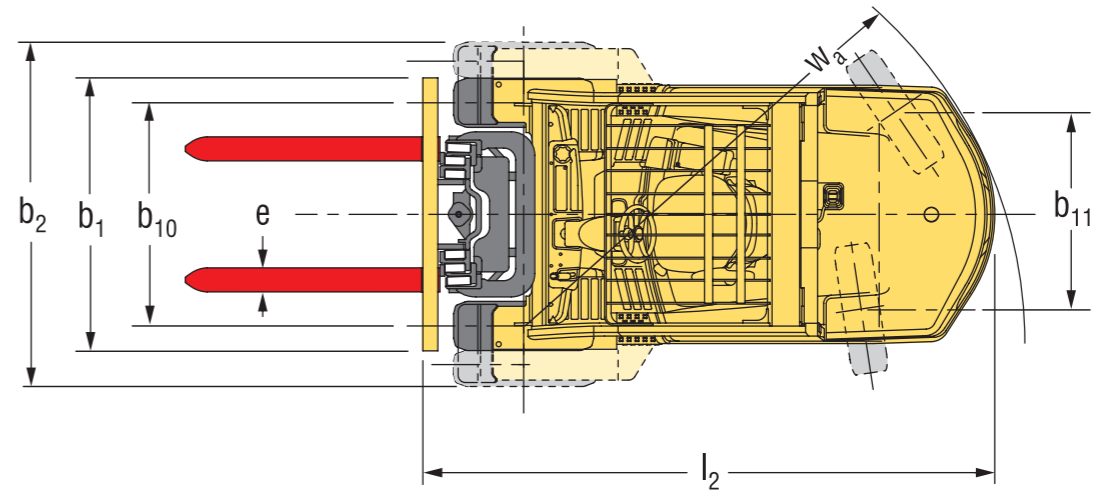
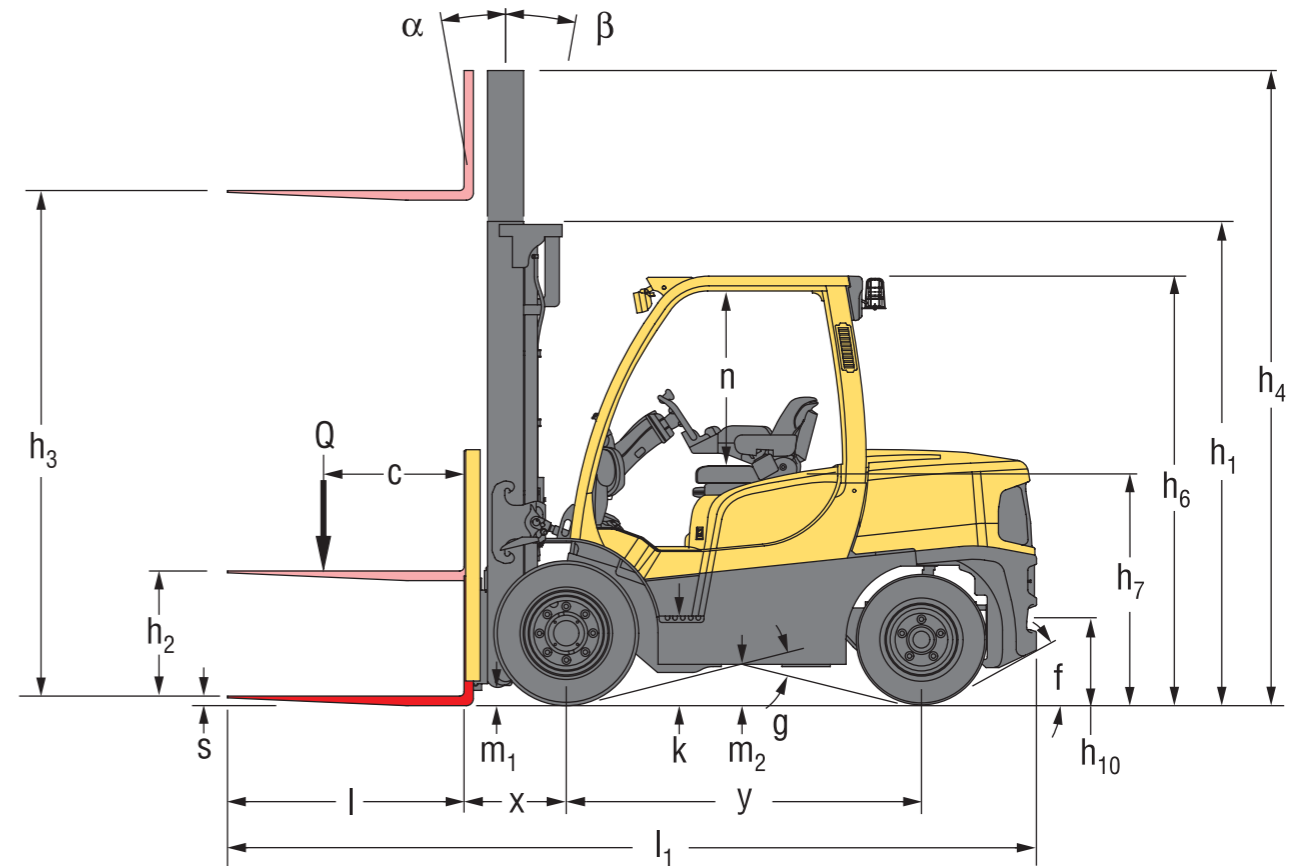
Care must be exercised when handling elevated loads. When the carriage and/or load is elevated, truck stability is reduced. It is important that mast tilt in either direction be kept to a minimum when loads are elevated. Operators must be trained and adhere to the instructions contained in the Operating Manual.

Hyster products are subject to change without notice. Lift trucks illustrated may feature optional equipment.

CE Safety:

This truck conforms to the current EU requirements.

TRUCK DIMENSIONS



$$Ast = W_a + x + l_6 + a \text{ (see lines 4.34.1 \& 4.34.2)}$$

a = Minimum operating clearance

(VDI standard = 200 mm BITA recommendation = 300 mm)

l_6 = Load length

POWERTRAINS

1.3	Drive: electric (battery or mains), diesel, petrol, LPG	Diesel	
COMBUSTION ENGINE	7.1	Engine manufacturer/type	Kubota 3600 IDI-T
	7.2	Engine power according to ISO 1585	57 kW
	7.3	Rated speed	2400 min ⁻¹
	7.3.1	Torque at 1/min	296 / 1600 Nm/min ⁻¹
	7.4	Number of cylinders/displacement	4 / 3620 cm ³
	7.10	Battery voltage/nominal capacity	12 / 105 (V)/(Ah)
DRIVE MECHANISM	8.1	Type of drive unit	Hydrodynamic
	8.2	Manufacturer/type	NMHG/Electronic
	8.6	Wheel drive/drive axle manufacturer/type	Dana or NMHG/WBA
	8.11	Service brake	Hydraulic
	8.12	Parking brake	Multi Disc Brake

PRODUCT PACKAGES

The Hyster Fortens™ range has been designed to match the vast range of application requirements and business objectives that customers demand. The H4.0-5.5FT Series is available in several truck packages, with multiple powertrain combinations to choose from, to best match operational demands. Each configuration offers improved efficiency, advanced dependability, lower cost of operations and simple serviceability.

Model / Bundle	H4.0FT5			H4.0FT6		
Diesel	Engine	Transmission	Brakes	Engine	Transmission	Brakes
Fortens Advance	Kubota 3.8L	DuraMatch™ 1 speed	Standard Wet Brakes	Kubota 3.8L	DuraMatch™ 1 speed	Standard Wet Brakes
Fortens Advance	Kubota 3.8L	DuraMatch™ 1 speed	Premium Wet Brakes	Kubota 3.8L	DuraMatch™ 1 speed	Premium Wet Brakes
Fortens Advance	Kubota 3.8L	DuraMatch™ 2 speed	Standard Wet Brakes	Kubota 3.8L	DuraMatch™ 2 speed	Standard Wet Brakes
Fortens Advance	Kubota 3.8L	DuraMatch™ 2 speed	Premium Wet Brakes	Kubota 3.8L	DuraMatch™ 2 speed	Premium Wet Brakes
Fortens Advance+	Kubota 3.8L	DuraMatch™ 2 speed	Premium Wet Brakes	Kubota 3.8L	DuraMatch™ 2 speed	Premium Wet Brakes

Model / Bundle	H4.5FT5			H4.5FT6		
Diesel	Engine	Transmission	Brakes	Engine	Transmission	Brakes
Fortens Advance	Kubota 3.8L	DuraMatch™ 1 speed	Standard Wet Brakes	-	-	-
Fortens Advance	Kubota 3.8L	DuraMatch™ 1 speed	Premium Wet Brakes	Kubota 3.8L	DuraMatch™ 1 speed	Premium Wet Brakes
Fortens Advance	Kubota 3.8L	DuraMatch™ 2 speed	Standard Wet Brakes	-	-	-
Fortens Advance	Kubota 3.8L	DuraMatch™ 2 speed	Premium Wet Brakes	Kubota 3.8L	DuraMatch™ 2 speed	Premium Wet Brakes
Fortens Advance+	Kubota 3.8L	DuraMatch™ 2 speed	Premium Wet Brakes	Kubota 3.8L	DuraMatch™ 2 speed	Premium Wet Brakes

Model / Bundle	H5.0FT			H5.5FT		
Diesel	Engine	Transmission	Brakes	Engine	Transmission	Brakes
Fortens Advance	Kubota 3.8L	DuraMatch™ 1 speed	Premium Wet Brakes	Kubota 3.8L	DuraMatch™ 1 speed	Premium Wet Brakes
Fortens Advance	Kubota 3.8L	DuraMatch™ 2 speed	Premium Wet Brakes	Kubota 3.8L	DuraMatch™ 2 speed	Premium Wet Brakes
Fortens Advance+	Kubota 3.8L	DuraMatch™ 2 speed	Premium Wet Brakes	Kubota 3.8L	DuraMatch™ 2 speed	Premium Wet Brakes

Please refer to the Price List for full option configurations.

PRODUCT FEATURES H4.0-5.5FT

THIS SERIES OF TRUCKS IS AVAILABLE IN TWO CONFIGURATIONS

The Fortens and Fortens Advance trucks provide excellent performance for the most demanding of applications and are engineered for the lowest hourly operating cost. The mainframe, mast and powertrain are designed, tested and built for intensive repetitive heavy duty tasks either with forks or attachments.

ENGINES & FUEL SYSTEM

Fortens models feature the Kubota V3600 4-cylinder IDI-T mechanically controlled turbocharged diesel engine with 57kW. This mechanically controlled engine is combined with an Electronic Powershift transmission, available with one or two speeds. Engine rpm, coolant temperature and oil pressure are monitored by the VSM.

Fortens Advance models feature the Kubota V3600 4-cylinder IDI-T electronically controlled turbocharged diesel engine with 57kW

TRANSMISSION

Fortens models, with the Kubota V3600 engine, are available with an Electronic Powershift transmission, featuring either one or two speeds.

Fortens Advance models feature the electronically controlled **DuraMatch™** transmission, with one or two speeds providing:-

- **Auto Deceleration System (ADS)** automatically slows the truck when the accelerator pedal is released, and finally brings the truck to a stop, which helps to significantly extend brake life. In addition, this feature assists the driver to accurately position the truck in front of a load. There are 10 ADS settings, programmable via the dash display by a service technician, which deliver different braking characteristics, from very gradual to aggressive, to suit the needs of the application.
- **Controlled Power Reversal;** the **Pacesetter VSM™** controls the transmission to deliver smooth direction changes. The VSM reduces the throttle to slow the engine, initiates auto-deceleration to stop the truck, changes the transmission direction automatically and increases the throttle to accelerate the truck. The system with ADS, the system is programmable via the dash display by a service technician, with settings from 1 to 10, to suit the needs of the application.
- **Controlled Roll-Back on Ramp;** the transmission controls the rate of decent of the truck on a ramp, when the brake and throttle pedal are released, to provide maximum control on a grade and increase operator productivity.

This transmission, in addition to the above, features:

- **First Gear** offering Increased Drawbar Pull for use on gradients.
- **Second Gear** provides maximum engine efficiency in applications where longer travel distances are common.

COOLING SYSTEM

The transmissions are compatible with the combi-cooler radiator and a superior counterweight tunnel design coupled with a "pusher" type fan, to provide the industry's best cooling. All Fortens H4.0-5.5FT Series models are equipped with Oil-immersed brakes offering reduced maintenance and repair time and costs, which results in extended truck dependability and uptime.

Oil-immersed brakes are ideally suited to applications in wet, dirty or corrosive environments, and ensure consistent braking performance under all operational conditions and throughout the lifetime of the truck. All powertrains are controlled, protected and managed by the **Pacesetter VSM™** industrial on-board computer, featuring a CANbus communications network.

PREMIUM MONITORING

This system permits adjustment and optimisation of the truck's performance, in addition to monitoring key functions. It enables quick, easy diagnostics, minimizing repair downtime and unnecessary parts swapping. Hassle-Free Hydraulic systems, featuring Leak-Free O-ring face seal fittings reduce leaks for enhanced reliability.

Non-mechanical, Hall-Effect sensors and switches have been fitted and are designed to outlast the life of the truck.

The operator compartment features class-leading **Ergonomics** for maximum driver comfort and productivity.

- **Operator space** is optimised by an overhead guard design that achieves a generous floor space.
- **A full range of Cabs with heating and optional Air Conditioning are available, including lowered cab for operation in containers etc.**
- **The Easy-to-use 3-point entry** design of operator compartment has an open non-slip step with a height of just 42.5 cm.
- **The Full Suspension Seat** together with the isolated powertrain provide best in class Whole-Body Vibration levels of 0.6m/s², ensuring that the operator remains comfortable throughout the shift and minimising the operator's exposure to vibration over the shift.
- **The mini-lever armrest** features a contoured design, and - in addition to the hydraulic functions - features a horn and direction switch, ensuring that all key truck functions are within constant, easy reach.
- **The Rear grab handle** with horn button and optional swivel seat facilitates reverse driving.
- **An infinitely adjustable steering column**, 30 cm diameter steering wheel with spinner knob.

The Hyster Fortens is the fastest and easiest lift truck to **Service:-**

- **Complete cowl-to-counterweight service access** and simplified layout of wiring and hydraulics offers greater access to components, which in turn decreases service time for unscheduled repairs and regular maintenance.
- **Fast, colour-coded daily checks and diagnostic systems** can be managed via the dash display.
- **An Engine coolant, oil change and Hydraulic oil change** interval of 4,000 hours hydraulics, coolant 2,000 hrs, engine oil 500hrs also contributes to reduced downtime.

STRONG PARTNERS. TOUGH TRUCKS.™

FOR DEMANDING OPERATIONS, EVERYWHERE.

Hyster supplies a complete range of warehouse equipment, IC and electric counterbalanced trucks, container handlers and reach stackers. Hyster is committed to being much more than a lift truck supplier.

Our aim is to offer a complete partnership capable of responding to the full spectrum of material handling issues: Whether you need professional consultancy on your fleet management, fully qualified service support, or reliable parts supply, you can depend on Hyster.

Our network of highly trained dealers provides expert, responsive local support. They can offer cost-effective finance packages and introduce effectively managed maintenance programmes to ensure that you get the best possible value. Our business is dealing with your material handling needs so you can focus on the success of your business today and in the future.



HYSTER EUROPE

Centennial House, Frimley Business Park, Frimley, Surrey, GU16 7SG, England.

Tel: +44 (0) 1276 538500



www.hyster.eu



infoeurope@hyster.com




[/HysterEurope](https://www.facebook.com/HysterEurope)




[@HysterEurope](https://twitter.com/HysterEurope)



[/HysterEurope](https://www.youtube.com/HysterEurope)

HYSTER  and FORTENS are registered trademarks in the European Union and certain other jurisdictions.

MONOTROL is a registered trademark, and DURAMATCH and  are trademarks in the United States and in certain other jurisdictions.

Hyster products are subject to change without notice. Lift trucks illustrated may feature optional equipment.

A division of NACCO Materials Handling Limited.

