



WWW.HYSTER.COM

**REACH TRUCK
1400 - 1600 KG**

PRODUCT BROCHURE

R1.4-R1.6HD SERIES



OVERVIEW

Driven by innovation, designed for efficiency, the new tough Hyster® Reach Truck sets the standard for warehouse operations.

Operating at greater heights, with improved stability, visibility, manoeuvrability and control, the all-new Reach Truck is built with the quality hallmarks of Hyster: tough, intelligent, dependable and efficient.

Made for every operation

The new Reach Truck range offers three models, from 1.4 to 1.6 tonnes, with a selection of three battery compartment sizes: more options, tailored to meet the demands of every indoor application.

Tough design

Designed and tested in some of our customers' most demanding warehouse environments, the Hyster® Reach Truck offers all new and advanced operator features and functionality to excel in intense applications.

The new truck features a three piece design for more options and to reduce replacement costs, while a completely redesigned mast delivers class-leading visibility and control.

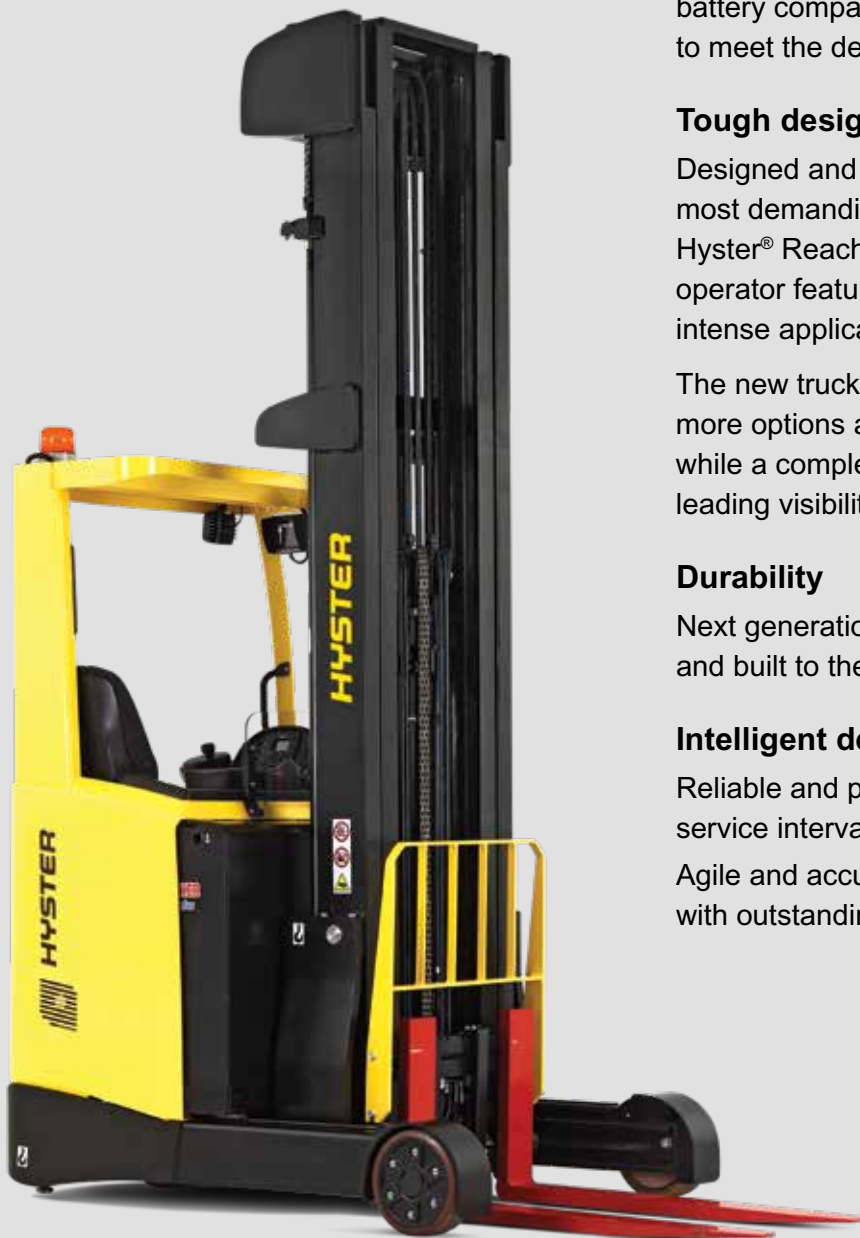
Durability

Next generation controllers and motors designed and built to the exacting standards of Hyster®.

Intelligent design

Reliable and productive: energy efficiency with long service intervals.

Agile and accurate: high lift (0.8m/s)/lower speeds, with outstanding all-round visibility and control.



Made for hard work

Designed for a comfortable, productive driving experience, the new Reach Truck's ergonomically designed operator compartment, excellent visibility and manoeuvrability makes light of hard work.

- Unique premium touch screen display and adjustable steering column
- New mast design delivering excellent visibility and stability at high reach

WHAT MAKES HYSTER® GREAT OUTDOORS, MAKES HYSTER® GREAT INDOORS...

- For demanding operations, everywhere
- Number 1 in Heavy Duty operations
- Intelligent design

THE INSIDE STORY: PERFORMANCE INDICATORS

“The Hyster® Reach Truck's acceleration and faster lift speeds, together with the mast height residual capacity delivers efficiency in operation.”



INNOVATION MEETS FUNCTION

For demanding operations everywhere.

Designed in Europe to the exacting standards of Hyster®, with over 55,000 man hours of product development and testing to achieve the final result: a Reach Truck packed with innovation, technically advanced yet practical, durable and dependable.



Mast Design and construction

- Unique channel design (patent pending)
- Excellent visibility through reduced total channel width
- Residual capacity maintained to higher heights

Available with multiple mast options ranging from 5500mm up to 11400mm, to meet an extensive range of operational requirements.

Clear visibility

Excellent all-round and 'past-the-mast' visibility for enhanced accuracy, productivity and performance in operation.

Excellent stability

The robust mast design and construction provides high residual capacities and stable load handling throughout the height range:

- Increased operator confidence when handling loads at height
- Increased productivity through faster put away and retrieval times
- Enhanced h1:h3 ratio, lifting to a higher maximum level with a lower closed height making it easier to drive through doorways and warehouse tunnels

THE INSIDE STORY: PERFORMANCE INDICATORS

"VCM with dual CANbus means more faster fault diagnostics and first time fixes for reduced downtime."

INNOVATION MEETS FUNCTION

MORE UPTIME, LESS DOWNTIME

Controllers placed underneath driver, allowing more space for storage and an additional handle to ease driver access and enhance visibility to the forks.

Hyster® Reach Trucks use one main truck master controller VCM (Vehicle Control Manager) to provide fully integrated controls for traction, steering and hydraulic pump motor (controllers), brakes, hydraulics, control elements, displays and all other on-board electronics.

The latest generation motor ensures electric system reliability, ease of access, enhanced diagnostic functionality and facilitates first time fixes, giving you increased productivity and reduced downtime.

DUAL CANBUS

(CONTROLLER AREA NETWORK)

VCM uses a dual CANbus to speed up fault diagnosis and allows the truck to operate in 'drive home' mode should a problem occur.

1. Drive motor controller
2. Hydraulic pump motor controller
3. Main truck master controller VCM (Vehicle Control Manager)
4. Steering motor controller



THE INSIDE STORY: VIEW FROM THE CAB

“A clear view past the mast gives greater confidence operating at height and helps speed up the job.”

EFFICIENCY BUILT IN

Warehouse operations are under ever-increasing pressure to deliver more swiftly, more efficiently and more cost effectively. Our reach trucks have been optimised to meet these challenges and are more reliable, more flexible and more productive than ever.

FASTER CYCLE TIMES

High performance – faster cycle times

A next generation Hyster® traction motor gives powerful acceleration and an increased 0.8 metres per second lift speed up to 11.4 metres

More manoeuvrable

A choice of 180°/360° steering, allows the Hyster® Reach Truck to operate in narrow aisles with ease and control:

- Standard: 180°
- Option: 360°



IN CONTROL

Braking and stability features for controlled handling in operation.

Auto regenerative and load braking

- Automatic braking when changing direction
- Wear-free, self-adjusting brake system – eliminates brake pads, hydraulic oil change, piping
- Easy access

Adjustable speed reduction on cornering

- Enhanced straight line travel
- Stable manoeuvrability on cornering



EFFICIENCY BUILT IN

ECO-ELO AND HIP PERFORMANCE MODES

Drive down operating costs by switching to Energy Efficiency Mode and reduce energy consumption by up to 20% without affecting productivity.

EASE OF OPERATION

Packed with driver-led features that streamline active service.

Height pre-selection option

- Driver assist feature for higher lifts
- Increase in load handling
- Helps to prevent damaged loads and racks

Two choices of display

- Quick and easy at a glance display
- All relevant operating conditions visible on one screen
- Easy access push buttons and switches
- Service technician can easily connect to PC service tool
- Reduced speed (“creep speed”) select
- Premium, enhanced technology, full colour touch screen available on all models
- Future proofed – The first Reach Truck touch screen display offering regular software upgrades

BY INNOVATION

Advanced features for enhanced operational performance.

Height indicator

- Continuous height measuring from ground up by lift height indicator shown on the display

THE INSIDE STORY: VIEW FROM THE CAB
“Intuitive controls and driver assist options are easy to use.”

WORK HARD IN COMFORT

When a driver operates a Reach Truck that is comfortable, easy to operate with great visibility, work-induced fatigue during a tough shift is reduced. Alertness and productivity improves and the number of mistakes diminishes.

Drivers are the key to every successful operation. That's why the well-being and productivity of your drivers was the starting point for the development of our new Reach Truck models. Every detail of the driver's experience was considered and built into the new Hyster® Reach Truck design.

ERGONOMIC CONTROLS



Arm rest / TouchPoint™ mini lever module

- Angled and contoured arm rest for increased operating comfort
- Incorporates mini lever control
- Integrated function control buttons



Practical operator compartment

- Low step height
- Easy reach grab handles to ensure three point entry
- Generous foot space and knee room
- New wider spaced pedal arrangement with increased side clearance



Tough steering column

- Mounted directly onto chassis
- Sturdy slider mechanism (tested to withstand downward force of 250kg)
- Extendable column for easy 'on/off' access and operator positioning

THE INSIDE STORY: PERFORMANCE INDICATORS

“Tough on the outside is matched by driver comfort on the inside, for a more productive workforce.”



Excellent visibility

- Lowered bulkhead for excellent all round visibility
- Excellent visibility through and around the mast
- Intelligent positioning of free lift cylinder
- Enhanced visibility decreases neck, head and shoulder stress during operation

THE INSIDE STORY: VIEW FROM THE CAB
“Everything has been designed with
the driver in mind.”

EASY, LOW COST MAINTENANCE

The new Reach Truck is practical as well as durable. High quality materials matched with easy access service areas ensures efficient maintenance and quick repairs to minimise your downtime and maintain high productivity.

Innovative technologies, robustly applied, work together to optimise the efficiency of each truck throughout the range.

- Hinged door gives easy service access to motors, hydraulics and other components
- Greased for 'life' mast rollers
- Basic display provides most critical status of components and error codes
- Single plug-in service access point for truck diagnostics
- Service technician can easily connect laptop to PC service tool
- Diagnostic plug-in point on standard and Premium displays
- Double wired CANbus and controllers
 - Easy access
 - Easy identification of possible component and wire harness failures
 - Greater number of first time fixes
- 100% leak free quick disconnect hydraulic fittings
- 3000 hour hydraulic oil and filter service interval, 7500 hour transmission oil change



THE INSIDE STORY: PERFORMANCE INDICATORS

“Low maintenance features and easy access to service areas helps keep the fleet up and running.”



THE INSIDE STORY: VIEW FROM THE CAB
“Easy daily checks and clear warnings about the operational status of key components.”

REDUCING WHOLE LIFE COSTS

Many businesses face growing financial pressures. The costs involved in owning and running a Reach Truck are significant. Every operational detail must be optimised.

By involving our customers at every stage of the design process we have worked with warehouse managers and business owners to identify and address the pinch points that affect different applications. From extended service intervals, more durable and long lasting components to battery management our new range delivers whatever your business demands.

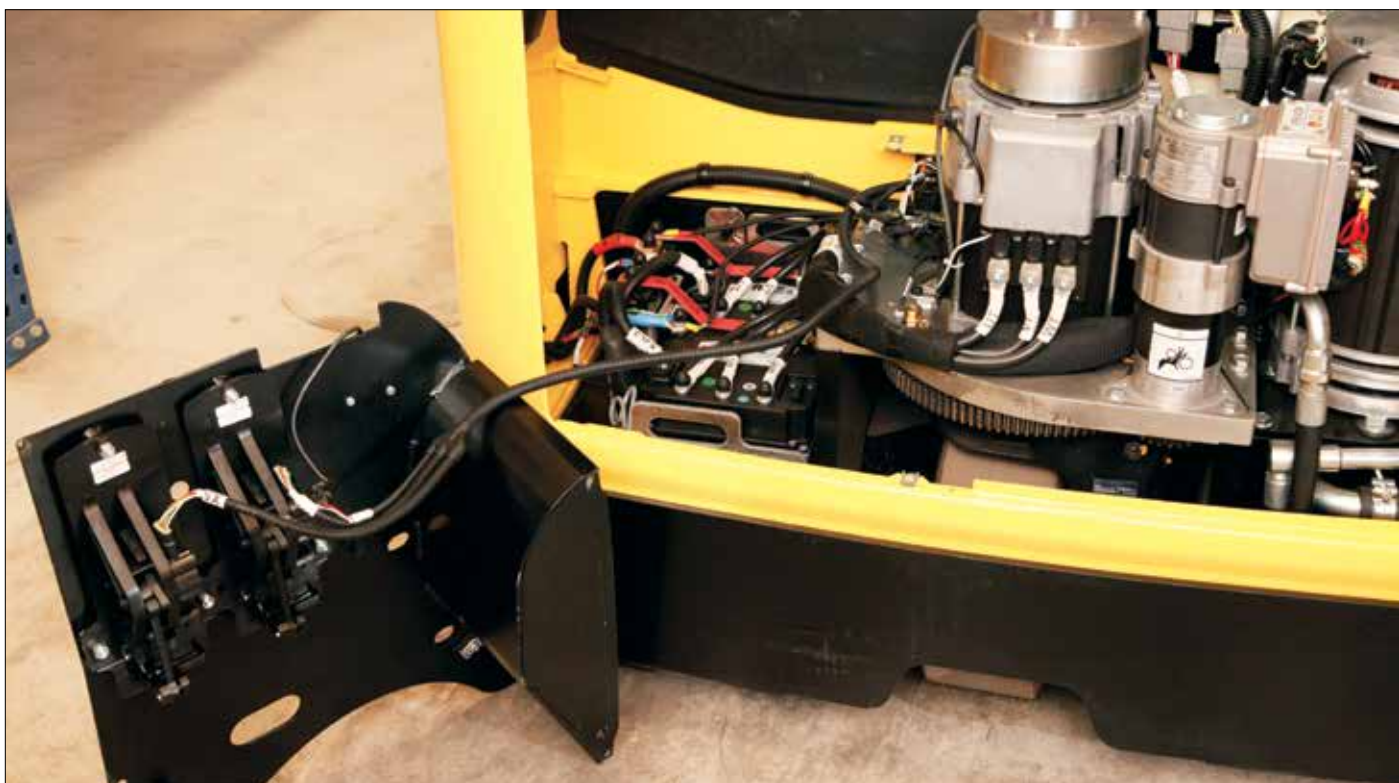
A TRUCK FOR EVERY APPLICATION:

- Food Production
- Grocery, beverage and non-food retail
- Cold stores
- Contract logistics
- Wholesale distribution
- Chemicals
- Cash and Carry
- Furniture retail
- DIY stores
- Manufacturing
- Spare parts distribution centres

THE INSIDE STORY: PERFORMANCE INDICATORS

“Low cost of ownership through long service life and future-proofed technology makes the difference to the bottom line.”





Manufacturer warranty

The Hyster® Reach Truck is designed to deliver the utmost in reliability, economy, productivity and profitability. Every new reach truck comes with 12 months / 2000 hour standard warranty and an additional 2 years / 4000 hours power train warranty. This includes repair and replacement of all parts not affected by accidental damage or wear in ordinary use.

Genuine parts

Our rigorous development and testing is designed to ensure that our trucks deliver the highest standards of operation, reliability and performance. Our genuine parts maintain the integrity and reliability of your truck. In the unlikely circumstance of your truck needing a part urgently, we have 99% first pick availability and a rapid parts delivery service aligned with our extensive network of dealers who are on hand to get you back to work.

World class quality

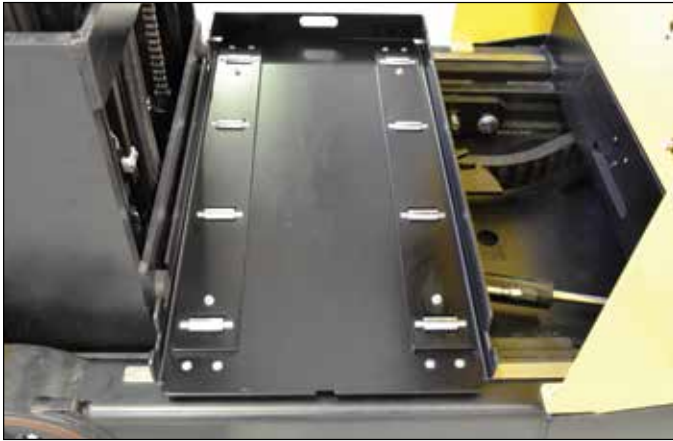
The Hyster® reputation for total customer satisfaction is a product of world-class manufacturing. By anticipating the needs of every customer, Hyster® Reach Trucks deliver performance, value and dependability, backed by the Hyster® 'First Time Right' quality commitment.

THE INSIDE STORY: VIEW FROM THE CAB

"I know I'll be driving a great truck for years to come."

A TRUCK TO MATCH EACH OPERATION

Just as every business is structured to meet the needs of its customers, so Hyster® Reach Trucks are optimised to meet the needs of specific applications. Flexibility in design and smart technology enable us to tailor the truck to meet your exact operations. Our range of options ensures that you do not have to compromise on the specification you need to satisfy your customers.



Frame options

- Three battery compartment sizes
- Integrated cold store

Masts, fork carriages

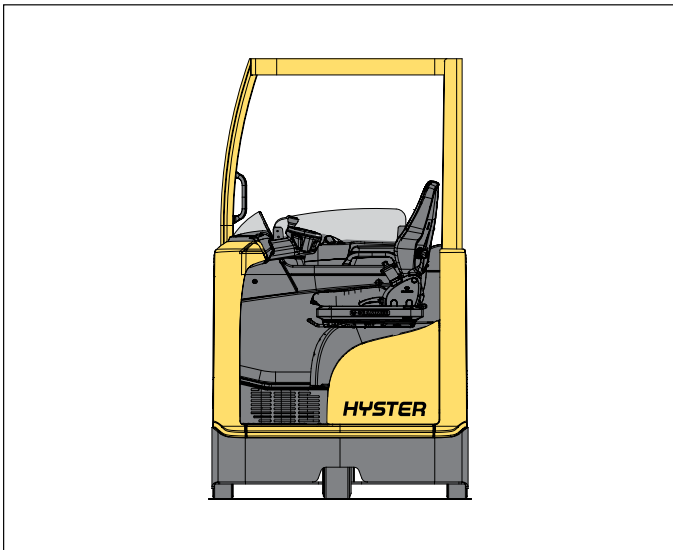
- Three stage standard
- Height range from 5.5 to 11.4m

Overhead guard

- Standard width compartment

Side extraction battery option

- Side extraction (roll-off/roll-off)
- For use in conjunction with manual and/or power assisted solutions
- Allows rapid battery changeover



THE INSIDE STORY: PERFORMANCE INDICATORS

“A reach truck tailor made for every warehouse application.”

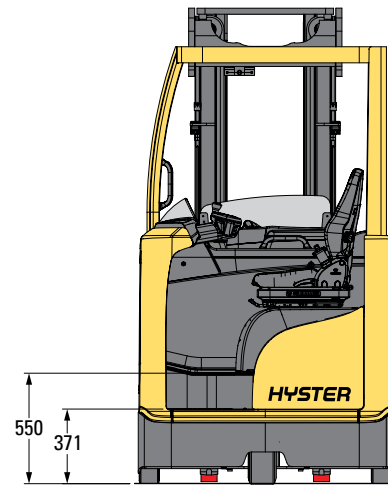
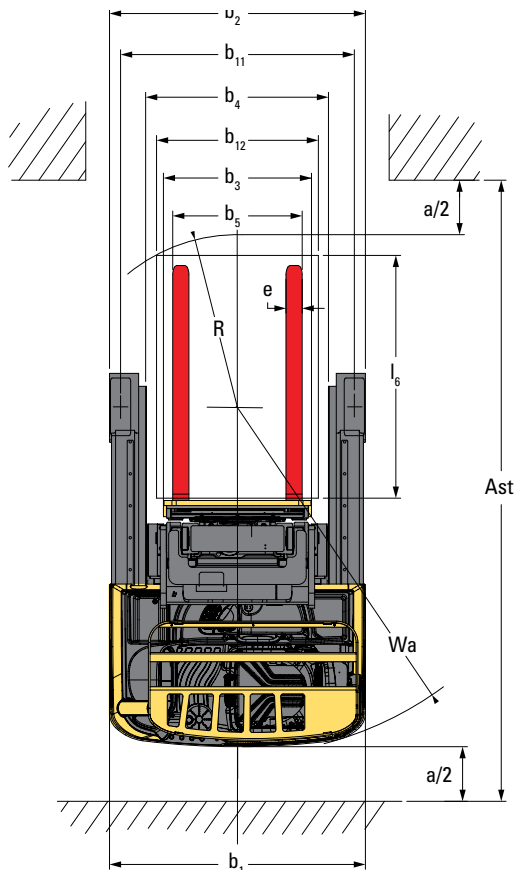
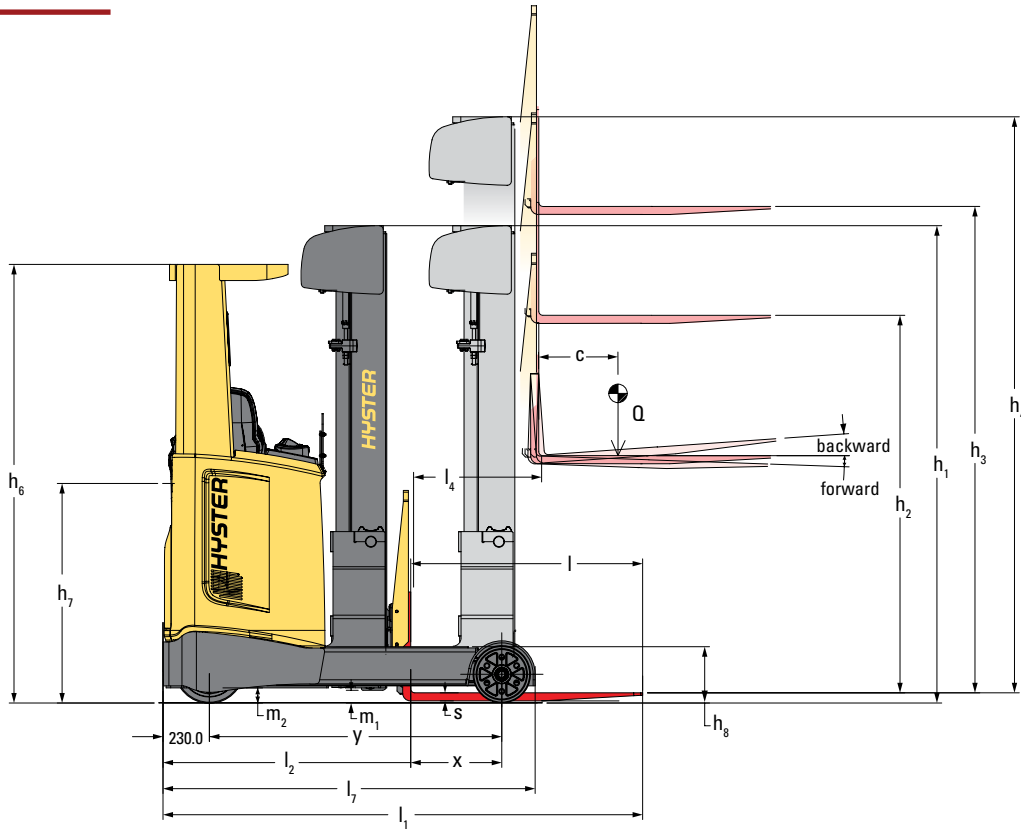
MAST INFORMATION

Values shown are for standard equipment. When using non-standard equipment these values may change. Please contact your Hyster dealer for information.

| Manufacturer's Type Designation | Lift (h3) mm | Free lift (h2) mm | Height of mast lowered (h1) mm | Height, mast extended (h4) mm | Weight \diamond \star kg |
|---------------------------------|--------------|-------------------|--------------------------------|-------------------------------|------------------------------|
| R1.4 / R1.6 | 5500 | 1820 | 2367 | 6063 | 961 |
| | 6000 | 1992 | 2539 | 6563 | 1010 |
| | 6500 | 2164 | 2711 | 7063 | 1060 |
| | 7500 | 2508 | 3055 | 8063 | 1164 |
| | 7750 | 2594 | 3141 | 8313 | 1220 |
| | 8000 | 2680 | 3227 | 8563 | 1244 |
| | 8500 | 2852 | 3399 | 9063 | 1299 |
| | 9500 | 3196 | 3753 | 10063 | 1407 |
| R1.6HD | 10500 | 3540 | 4087 | 11063 | 1509 |
| | 10400 | 3540 | 4097 | 10963 | 1706 |
| | 10900 | 3712 | 4269 | 11463 | 1763 |
| | 11400 | 3884 | 4441 | 11963 | 1819 |



TRUCK DIMENSIONS



$$A_{st} = W_a + R + a$$

(see lines 4.34.1 and 4.34.2)

$$R = \sqrt{(l_6 - x)^2 + \left(\frac{b_{12}}{2}\right)^2}$$

$$a = 200\text{mm}$$

All values are nominal values and they are subject to tolerances. For further information, please contact the manufacturer. Hyster products might be subject to change without notice. Lift trucks illustrated may feature optional equipment. Values may vary with alternative configurations.

SPECIFICATIONS

| Distinguishing Mark | 1.1 | Manufacturer | Hyster | | | |
|------------------------|---|---|---------------------------------|---------------------------|-----------------|-----------------|
| | 1.2 | Manufacturer's type designation | | R1.4 | R1.6 | R1.6HD |
| 1.3 | Drive: electric (battery or mains), diesel, petrol, fuel gas, LPG | | Electric (battery) | Electric (battery) | Electric | |
| 1.4 | Operator type: hand, pedestrian, standing, seated, order-picker | | Seated | | | |
| 1.5 | Rated capacity / Rated load | Q (t) | 1.4 | 1.6 | | |
| 1.6 | Load centre distance | c (mm) | 600 | | | |
| 1.8 | Load distance, centre of drive axle to fork | x (mm) | 402 | 452 | 293 | |
| 1.9 | Wheelbase | y (mm) | 1400 | 1450 | | |
| Weight | 2.1 | Unladen weight | kg | 3112 | 3162 | 4224 |
| | 2.3 | Axle loading, unladen front/rear ◆ | kg | 1977 / 1135 | 2018 / 1144 | 2428 / 1796 |
| | 2.4 | Axle loading fork advanced, laden front/rear | kg | 682 / 3830 | 601 / 4162 | 979 / 4845 |
| | 2.5 | Axle loading fork retracted, laden front/rear | kg | 1778 / 2735 | 1853 / 2909 | 2104 / 3720 |
| Tyres/Chassis | 3.1 | Tyres: polyurethane, tophane, vulkollan, front/rear | Vulkollan/Vulkollan | | | |
| | 3.2 | Tyre size, front | ø mm x mm | 343 x 140 | | |
| | 3.3 | Tyre size, rear | ø mm x mm | 285 x 100 | | |
| | 3.5 | Number of wheels, front / rear (x = driven wheels) | | 1x/2 | | |
| | 3.7 | Tread, rear | b11 (mm) | 1155 | | |
| Dimensions | 4.1 | Mast tilt, forward α / back β | degrees | 2 / 4 | | |
| | 4.2 | Height of mast, lowered | h1 (mm) | 2195 | 3227 | |
| | 4.3 | Free Lift | h2 (mm) | 1648 | 2680 | |
| | 4.4 | Lift | h3 (mm) | 5000 | 7900 | |
| | 4.5 | Height of mast, extended ▶ | h4 (mm) | 5563 | 8463 | |
| | 4.7 | Height of overhead guard (cabin) □ | h6 (mm) | 2175 | | |
| | 4.8 | Seat height relating to SIP | h7 (mm) | 1082 | | |
| | 4.10 | Height of wheel arms | h8 (mm) | 308 | | |
| | 4.19 | Overall length | l1 (mm) | 2379 | 2538 | |
| | 4.20 | Length to face of forks | l2 (mm) | 1229 | 1388 | |
| | 4.21 | Overall width | b1/b2 (mm) | 1265 | | |
| | 4.22 | Fork dimensions DIN ISO 2331 | s/e/l (mm) | 40 / 80 / 1150 | 40 / 120 / 1150 | 35 / 100 / 1070 |
| | 4.23 | Fork carriage ISO 2328, class/type A, B | | 2A | | |
| | 4.24 | Fork carriage width | b3 (mm) | 700 | | |
| | 4.25 | Distance between fork-arms min./max. ✖ | b5 (mm) | 220/640 | 260/680 | |
| | 4.26 | Distance between wheel arms/loading surfaces | b4 (mm) | 900 | | |
| | 4.28 | Reach distance | l4 (mm) | 585 | 635 | 491 |
| | 4.31 | Ground clearance, laden, below mast | m1 (mm) | 75 | | |
| | 4.32 | Ground clearance, centre of wheelbase | m2 (mm) | 75 | 85 | |
| | 4.34.1 | Aisle width for pallets 1000mm x 1200mm crossways | Ast (mm) | 2718 | 2731 | 2845 |
| | 4.34.2 | Aisle width for pallets 800mm x 1200mm lengthwise | Ast (mm) | 2764 | 2767 | 2909 |
| | 4.35 | Turning radius | Wa (mm) | 1671 | 1718 | |
| | 4.37 | Length across wheel arms | l7 (mm) | 1795 | 1845 | |
| 4.43 | Step height | (mm) | 371 | | | |
| Performance Data | 5.1 | Travel speed, laden/unladen ● | km/h | 11 / 11 (14 / 14) | | |
| | 5.1.1 | Travel speed, laden/unladen, backwards ● | km/h | 11 / 11 (14 / 14) | | |
| | 5.2 | Lift speed, laden/unladen ● | m/s | 0,37 / 0,63 (0,47 / 0,73) | | |
| | 5.3 | Lowering speed, laden/unladen | m/s | 0,55 / 0,55 | 0,55 / 0,55 | 0,55 |
| | 5.4 | Reaching speed, laden/unladen | m/s | 0,15 / 0,15 | | |
| | 5.7 | Gradeability, laden/unladen | % | 12 / 15 | 11 / 15 | 12 / 18 |
| | 5.8 | Max. gradeability laden/unladen | % | 12 / 15 | | |
| | 5.9 | Acceleration time laden/unladen | s | on request | | |
| | 5.10 | Service brake | | Electric | | |
| | Power Unit | 6.1 | Drive motor S2 60 minute rating | kW | 5.4 | 9.6 |
| 6.2 | | Lift motor, S3 15% rating | kW | 9.9 | 14 | |
| 6.3 | | Battery according to DIN 43531/35/36 A,B,C, no | | C | | |
| 6.4 | | Battery voltage/nominal capacity K5 | (V)/(Ah) | 48 / 420 ■ | 48 / 700 ■ | |
| 6.5 | | Battery weight ☉ | kg | 750 | 1119 | |
| 6.6 | | Energy consumption according to VDI cycle | kWh/h | on request | | |
| Drive / Lift Mechanism | 8.1 | Type of drive unit | | AC | | |
| Additional Data | 10.1 | Operating pressure for attachments | bar | 180 | | |
| | 10.2 | Oil volume for attachments | l/min | 20 | | |
| | 10.7 | Sound pressure level at the driver's seat | dB (A) | <69.7 | | |

SPECIFICATIONS

NOTE:

Specifications are affected by the condition of the vehicle and how it is equipped, as well as the nature and condition of the operating area. If these specifications are critical, the proposed application should be discussed with your dealer.

- ▶ With load backrest h4 + 508 mm (R1.4-R1.6HD),
- With beacon h6 + 120 mm;
With OHG Grid Protector h6 + 20 mm ; With OHG Screen Protector h6 + 30 mm
- ▼ These values may vary of +/- 5%.
- ◆ Forks retracted.
- Battery information
- Values in brackets are optional.
- ✱ Side shift stroke is +/-75mm on all trucks.

Mast Tables

- ▶ R1.4, R1.6, R1.6HD - With load backrest 1000 mm height, h4 + 508 mm
- ❖ All weights are: mast structures (weldment, cylinders, chain, pulley) + carriage + load backrest + oil. EXCLUDED: forks, accessories.
- ★ With load backrest 700 mm width, 1000 mm height, weight + 13 kg;

Battery Tables

- ⊗ These values may vary of +/- 5%.
- ← Forks retracted.
- ✱ Side shift stroke is +/-75mm on all trucks.

All weights (2.1 to 2.5) are with lowest mast and standard forks.

Standard Equipment and Options

- ✓ Includes:
 - End of stroke slow down on lift
 - Soft stop on lowering
 - Height controlled mast cushioning over Free Lift/Main lift mast section
 - Height indicator

✓✓ DIN C battery on R1.4 / R1.6 / R1.6HD

NOTICE

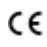
Care must be exercised when handling elevated loads. When the carriage and/or load is elevated, truck stability is reduced. It is important that mast tilt in either direction be kept to a minimum when loads are elevated.

Operators must be trained and adhere to the instructions contained in the Operating Manual.

Hyster products are subject to change without notice.
Lift trucks illustrated may feature optional equipment.

All values are nominal values and they are subject to tolerances. For further information, please contact the manufacturer.

Values may vary with alternative configurations.

 **Safety:** This truck conforms to the current EU requirements.

STANDARD EQUIPMENT AND OPTIONS

| | Feature | R1.4 / R1.6 | R1.6HD |
|----------------------------------|---|-------------|--------|
| Operator Compartment | Intermediate step | X | X |
| | Grab handle on overhead guard post | X | X |
| | Grab handle under armrest | X | X |
| | TouchPoint™ mini levers mounted on adjustable length armrest | X | X |
| | Full suspension seat - 60 mm suspension travel cloth upholstery | X | X |
| | Full suspension vinyl heated seat | 0 | 0 |
| | Seat belt | 0 | 0 |
| | Standard display | X | X |
| | Premium display with touch screen | 0 | 0 |
| | Keyless access | 0 | 0 |
| | Adjustable steering column | X | X |
| | Automatic park brake | X | X |
| | 180° steering | X | X |
| 360° steering | 0 | 0 | |
| Travel Performance | Travel speed 11 km/h | X | X |
| | Height of mast, lowered | X | X |
| | Speed slow down mast reached forward | X | X |
| | Speed slow down on cornering | X | X |
| | Speed slow down over free lift | X | X |
| Lift Performance / Driver Assist | 3 stage mast / tilting carriage | X | X |
| | Simultaneous lift / reach functionality | X | X |
| | Mast cushioning over free lift/main lift sections - fixed sensor mounting | X | X |
| | Lift Comfort package ✓ | 0 | 0 |
| | Height preselector (with / without pallet detection device) | 0 | 0 |
| | Weight indicator | 0 | 0 |
| | Carriage mounted camera | 0 | 0 |
| | Laser line fork positioning aid (above free lift) | 0 | 0 |
| | Telescopic Forks | 0 | 0 |
| Application Environment | High temperature environment | 0 | 0 |
| | Full view overhead guard | 0 | 0 |
| | Wet grip tyres | 0 | 0 |
| | Front and/or rear blue pedestrian awareness spotlights | 0 | 0 |
| | Red line (side) pedestrian awareness lights | 0 | 0 |
| | Flashing beacon | 0 | 0 |
| | Top / front load wheel protection | 0 | 0 |
| | Side battery change - battery tray rollers | 0 | 0 |
| | Side battery change table | 0 | 0 |
| | Audible alarm | 0 | 0 |
| Load backrest (1000 mm) | 0 | 0 | |
| Chassis / Battery Sizes | 1265mm | X | X |
| | 420-465 Ah | 0 | - |
| | 560-620 Ah | 0 | 0 |
| | 700-775 Ah | 0 | 0 |

BATTERY INFORMATION - R1.4, R1.6, R1.6HD

| Truck dimensions for different batteries | | R1.4 | | | | | | |
|--|------------------|---|------------|-------------|-------------|-------------|-------------|-------------|
| Dimensions | 1.2 | Manufacturer's type designation | | | | | | |
| | 1.8 | Load distance, centre of drive axle to fork | x (mm) | 402 | 330 | 258 | | |
| | 1.9 | Wheelbase | y (mm) | 1400 | | | | |
| | 2.1 | Service weight | kg | 3112 | 3309 | 3320 | 3495 | 3541 |
| | 2.3 | Axle loading, unladen front/rear ← | kg | 1977 / 1135 | 2025 / 1285 | 2032 / 1289 | 2055 / 1440 | 2084 / 1457 |
| | 2.4 | Axle loading fork advanced, laden front/rear | kg | 682 / 3830 | 792 / 3917 | 800 / 3921 | 885 / 4010 | 914 / 4027 |
| | 2.5 | Axle loading fork retracted, laden front/rear | kg | 1778 / 2735 | 1753 / 2956 | 1760 / 2960 | 1711 / 3184 | 1741 / 3201 |
| | 4.19 | Overall length | l1 (mm) | 2379 | 2451 | | 2523 | |
| | 4.20 | Length to face of forks | l2 (mm) | 1229 | 1301 | | 1373 | |
| | 4.28 | Reach distance l4 (mm) | l4 (mm) | 585 | 513 | | 441 | |
| | 4.34.1 | Aisle width for pallets 1000mm x 1200mm crossways | Ast (mm) | 2718 | 2771 | | 2825 | 2826 |
| | 4.34.2 | Aisle width for pallets 800mm x 1200mm lengthwise | Ast (mm) | 2764 | 2829 | | 2895 | |
| | 4.35 | Turning radius | Wa (mm) | 1671 | | | | |
| | 6.3 | Battery according to DIN 43531/35/36 A,B,C, no | | C "Super" | C | C "Super" | C | C "Super" |
| | 6.4 | Battery voltage/nominal capacity K5 | (V) / (Ah) | 48 / 465 | 48 / 560 | 48 / 620 | 48 / 700 | 48 / 775 |
| 6.5 | Battery weight ⊗ | kg | 750 | 939 | 950 | 1119 | 1165 | |

| Truck dimensions for different batteries | | R1.6 | | | | | | |
|--|------------------|---|------------|-------------|-------------|-------------|-------------|-------------|
| Dimensions | 1.2 | Manufacturer's type designation | | | | | | |
| | 1.8 | Load distance, centre of drive axle to fork | x (mm) | 452 | 380 | 308 | | |
| | 1.9 | Wheelbase | y (mm) | 1450 | | | | |
| | 2.1 | Service weight | kg | 3162 | 3360 | 3371 | 3546 | 3592 |
| | 2.3 | Axle loading, unladen front/rear ← | kg | 2018 / 1144 | 2065 / 1291 | 2077 / 1294 | 2013 / 1443 | 2133 / 1459 |
| | 2.4 | Axle loading fork advanced, laden front/rear | kg | 601 / 4162 | 714 / 4246 | 721 / 4250 | 810 / 4336 | 839 / 4352 |
| | 2.5 | Axle loading fork retracted, laden front/rear | kg | 1853 / 2909 | 1825 / 3135 | 1832 / 3139 | 1779 / 3367 | 1809 / 3383 |
| | 4.19 | Overall length | l1 (mm) | 2379 | 2451 | | 2523 | |
| | 4.20 | Length to face of forks | l2 (mm) | 1229 | 1301 | | 1373 | |
| | 4.28 | Reach distance l4 (mm) | l4 (mm) | 635 | 563 | | 491 | |
| | 4.34.1 | Aisle width for pallets 1000mm x 1200mm crossways | Ast (mm) | 2731 | 2781 | | 2834 | |
| | 4.34.2 | Aisle width for pallets 800mm x 1200mm lengthwise | Ast (mm) | 2767 | 2830 | | 2896 | |
| | 4.35 | Turning radius | Wa (mm) | 1718 | | | | |
| | 6.3 | Battery according to DIN 43531/35/36 A,B,C, no | | C "Super" | C | C "Super" | C | C "Super" |
| | 6.4 | Battery voltage/nominal capacity K5 | (V) / (Ah) | 48 / 465 | 48 / 560 | 48 / 620 | 48 / 700 | 48 / 775 |
| 6.5 | Battery weight ⊗ | kg | 750 | 939 | 950 | 1119 | 1165 | |

| Truck dimensions for different batteries | | R1.6HD | | | | | |
|--|------------------|---|------------|-------------|-------------|-------------|-------------|
| Dimensions | 1.2 | Manufacturer's type designation | | | | | |
| | 1.8 | Load distance, centre of drive axle to fork | x (mm) | 308 | | 293 | |
| | 1.9 | Wheelbase | y (mm) | 1450 | | | |
| | 2.1 | Service weight | kg | 4038 | 4049 | 4224 | 4270 |
| | 2.3 | Axle loading, unladen front/rear ← | kg | 2417 / 1621 | 2424 / 1625 | 2428 / 1796 | 2457 / 1813 |
| | 2.4 | Axle loading fork advanced, laden front/rear | kg | 883 / 4755 | 891 / 4758 | 979 / 4845 | 1009 / 4861 |
| | 2.5 | Axle loading fork retracted, laden front/rear | kg | 2172 / 3466 | 2180 / 3469 | 2104 / 3720 | 2134 / 3736 |
| | 4.19 | Overall length | l1 (mm) | 2523 | | | |
| | 4.20 | Length to face of forks | l2 (mm) | 1373 | | 1388 | |
| | 4.28 | Reach distance l4 (mm) | l4 (mm) | 491 | | | |
| | 4.34.1 | Aisle width for pallets 1000mm x 1200mm crossways | Ast (mm) | 2834 | | 2845 | |
| | 4.34.2 | Aisle width for pallets 800mm x 1200mm lengthwise | Ast (mm) | 2896 | | 2909 | |
| | 4.35 | Turning radius | Wa (mm) | 1718 | | | |
| | 6.3 | Battery according to DIN 43531/35/36 A,B,C, no | | C | C "Super" | C | C "Super" |
| | 6.4 | Battery voltage/nominal capacity K5 | (V) / (Ah) | 48 / 560 | 48 / 620 | 48 / 700 | 48 / 775 |
| 6.5 | Battery weight ⊗ | kg | 939 | 950 | 1119 | 1165 | |

All values are nominal values and they are subject to tolerances. For further information, please contact the manufacturer. Hyster products might be subject to change without notice. Lift trucks illustrated may feature optional equipment. Values may vary with alternative configurations.

PRODUCT FEATURES

The new tough Hyster® Reach Truck is designed for efficiency for operations at height, with excellent stability, visibility, manoeuvrability and control. The all-new Reach Truck is built with the quality hallmarks of Hyster: tough, intelligent, dependable and efficient.

DEPENDABILITY

- New reach truck feature modular three piece design of frame, operator compartment and overhead guard.
- Completely welded stiff and strong base frame is available in 4 different lengths to match demanding applications requirements.
- The operator compartment is a one piece welded structure developed for long term durability.
- The new overhead guard design with oval shape pillar and a round inwards bended tube for standard truck models provides excellent visibility.
- New mast incorporates new unique Hyster designed profiles that reduce the total mast channel width.
- Dual CANbus technology reduces wiring complexity for increased reliability.
- Parts communality with other counterbalance trucks, with proven reliability and durability.
- Top and partially front protected load wheels reduce damage to the load wheel and increase the lifetime of Reach Truck.

PRODUCTIVITY

- The new, improved Hyster traction motor gives powerful acceleration and the new mast deliver 0.8 metres per second lift speed up to 11.4 metres.
- Three different steering modes: 180 degree steering as standard and 360 degree steering as option
- Limited mast selection allows truck to be configured to the needs of the application.
- Full AC infrastructure on drive, traction and hydraulic motors allows seamless changes in direction of travel, increasing cycle speeds and

the control of pallet handling operations.

- Adjustable speed reduction on cornering feature provides smooth load handling and precise direction control.
- TouchPoint™ mini lever module control for all hand controlled main hydraulic functions within hand reach position.
- ECO-eLo and HiP performance modes for application matching configurations.

ERGONOMICS

- New operator compartment layout is optimised on ergonomics and operator space. The industry lowest 371mm step height provides improved ingress/ egress with 3 point contact.
- New pedal layout increases useful operator floor space with low resistance foot pedals positioned on slightly angled floor plate for most ergonomic foot position.
- The operator presence switch is slightly rotated to the mid line off the operator seat to improve operator left foot position.
- Additional lumbar support and the fully adjustable backrest angle (with a setting range from 5° to 30°) ensure optimum driver comfort throughout the shift.
- The steering column is adjustable in length in 10 positions for best ergonomic steering wheel position.
- In length adjustable right armrest to allow for best ergonomic hand control with integrated TouchPoint™ mini lever module for all hand controlled main hydraulic functions within hand reach position.
- In front of operator positioned display to allow for easy reading without disturbing visibility.
- The drive wheel automatically moves to centre position when truck is switched on.
- New mast with optimised lift cylinders position for increased visibility incorporates new unique profiles that reduce the total mast channel width.

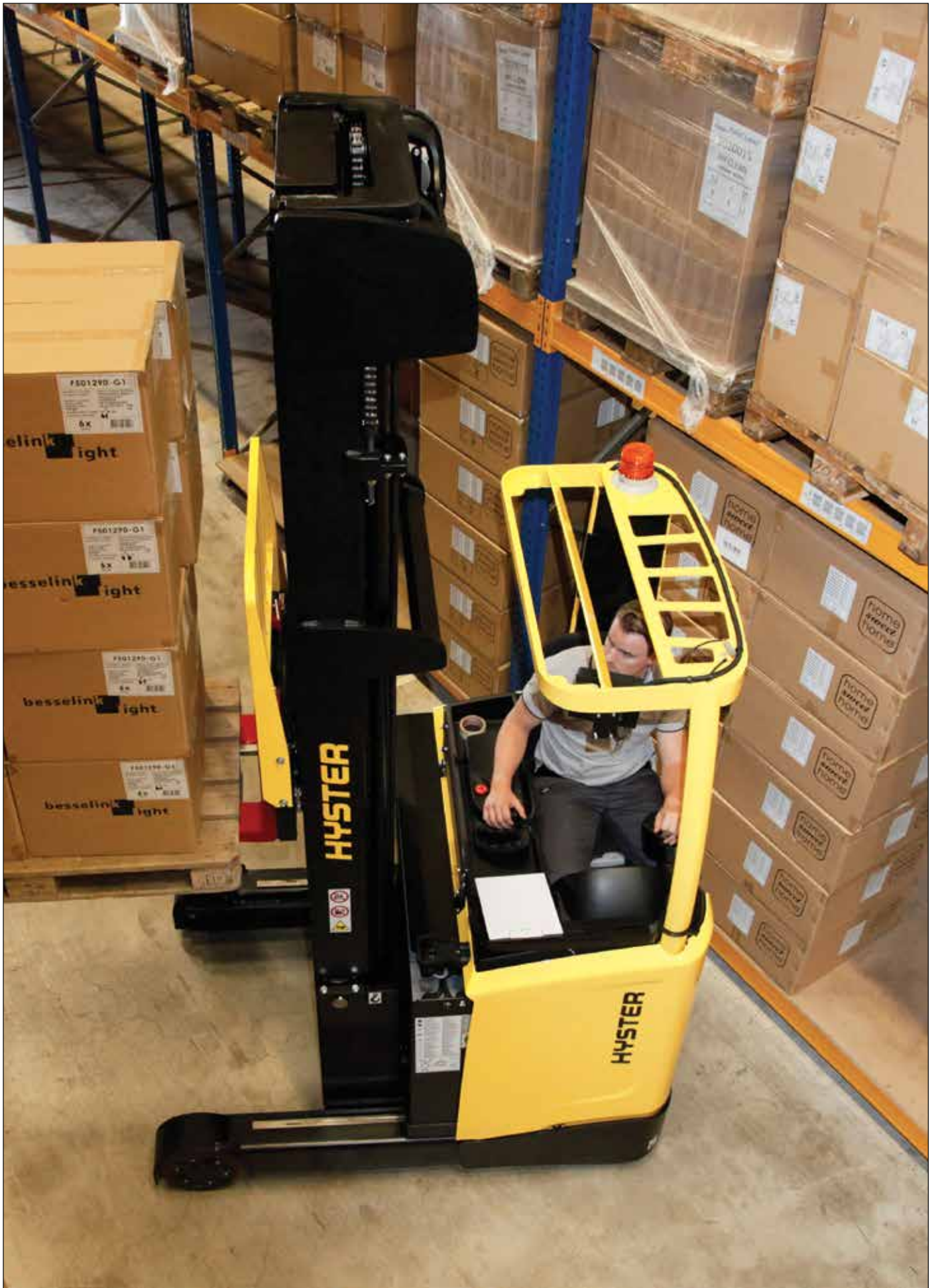
PRODUCT FEATURES

LOW COST OF OWNERSHIP

- The new Hyster 5.4 and 9.6 kW traction motor gives powerful acceleration and an increased travel for superior performance and increased loads moves per hour.
- The ECO-eLo mode reduces the acceleration speed promoting efficient energy consumption difference of 5%.
- Regenerative braking dissipates the generated heat in the motor increasing the braking effect and reducing maintenance cost.
- Trucks are rated to IP65 standard, for protection against dust and water ingress.
- High level of parts communality with other Hyster products with proven reliability and durability for ease of maintenance

SERVICEABILITY

- Standard display provides most critical status of components and error codes. Industry first Reach Truck touch screen display offering regular software upgrades.
- Hinge door in the front of the truck provide full access to the motors, hydraulics and compartment for easy service and maintenance of all components.
- VCM (Vehicle Control Manager) and Dual CANbus technology facilitates identification of failures of components and wire harness.
- AC technology minimises the dependence on mechanical parts. This leads to a reduction in service costs over the lifetime of the truck
- 100% leak free quick (dis)connect hydraulic couplings to prevent any spillage when disconnecting for maintenance.
- Service interval for hydraulic oil and filter - 3,000h, transmission oil change - 7,500h.





Hyster Pacific

1/23 Rowood Road, Prospect NSW 2145


Tel: +61 (2) 9795 3800 Fax: +61 (2) 9792 8484

Hyster Asia

16 Tuas Avenue 20, Singapore 638827

Tel: +65 6863 3387 Fax: +65 6863 3349

Visit us online at www.hyster.com

© Hyster Asia Pacific 2023. All rights reserved. HYSTER, , and Strong Partners. Tough Trucks are trademarks of Hyster-Yale Group, Inc. Specifications and details in this brochure are subject to change without prior notification. Please consult with your Hyster dealer for the most up to date information and to confirm exact capacities.