



**STRONG PARTNERS.  
TOUGH TRUCKS.™**



# **HYSTER UT SERIES**

**SEATED ELECTRIC TOW TRACTOR**

**T6.OUT / 6000 KG**

**[HYSTER.COM.AU](http://HYSTER.COM.AU)**



## > OVERVIEW

# T6.OUT

**THE HYSTER® SEATED ELECTRIC TOW TRACTOR T6.OUT COMBINES ERGONOMIC FEATURES AND RELIABLE PERFORMANCE WITH ENERGY EFFICIENT TECHNOLOGY. LOW MAINTENANCE DELIVERS INCREASED PRODUCTIVITY AND REDUCED OPERATIONAL COSTS.**

### Productivity

- High-power drive motor
- Impressive pulling performance
- Seamless travel and manoeuvrability
- 3 operation modes available
- Ergonomic layout
- Adjustable seat and steering column
- Rear multi-position tow coupling
- Maintenance free AC motor
- Multi-function LCD dash display

### Serviceability

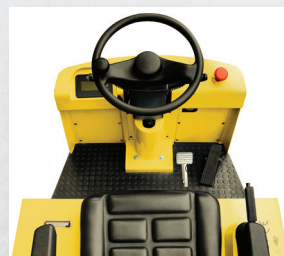
- Easy access for fast and efficient servicing
- Simple, readily available components
- CANbus technology reduces wiring complexity
- Built-in diagnostics, accessible via the dash display
- Computer-based diagnostics not required

### Safety & Structural Design

- Operator Presence System (OPS)
- Non-slip, uncluttered floor plate
- Drive axle design and low centre of gravity enables excellent stability
- Emergency stop button
- Low noise level
- High quality, robust components

### Optional Features

- Power steering
- Automatic electro-magnetic parking brake
- Seatbelt reminder system
- Semi-closed cabin
- Rear view mirrors
- Non-marking tyres
- Blue Light and Strobe Light
- Keyless key switch (password)



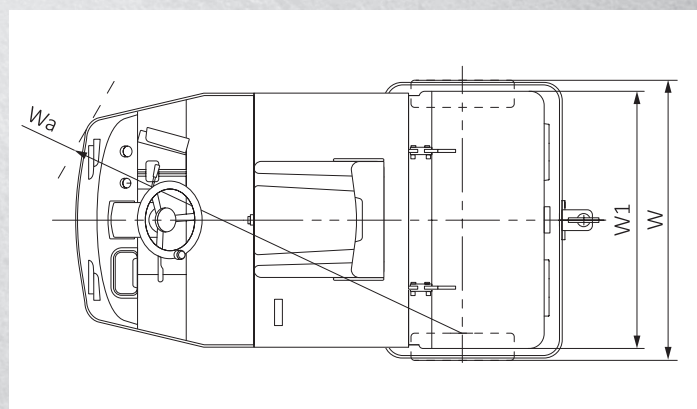
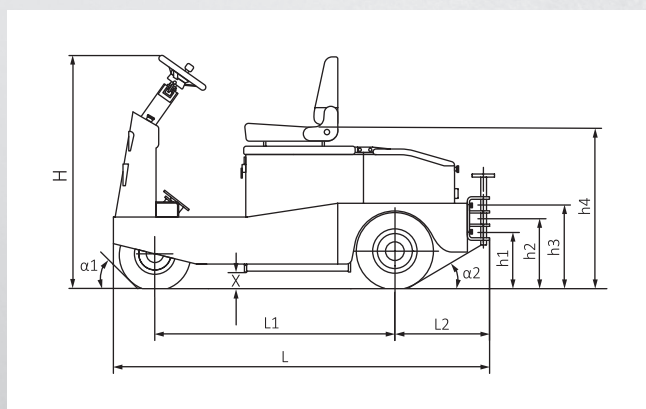
**Ergonomic Operator  
Compartment**



**Easy Service Access  
via Back Cover**

# SPECIFICATIONS AND DIMENSIONS ◀

MODEL	MEASUREMENT	T6.0UT
Power Type		48-Volt
Operator Type		Seated
Rated Capacity	kg	6000
Drawbar Pull, 60min rating	N	1500
Max Drawbar Pull, 5min rating	N	6000
Wheelbase	L1 (mm)	1280
Rear Load Distance	L2 (mm)	500
Service Weight	kg	1360
Axle Loading, unladen front / rear	kg	450 / 910
Front, Tyre size / type (No. of Wheels)		15x4.5 Solid (1)
Rear, Tyre size / type (No. of Wheels)		4.00-8 Solid (2)
Wheel Tread, front	mm	n/a
Wheel Tread, rear	W1 (mm)	946
Seat Height / STD	h4 (mm)	910
Coupling Height	h1 / h2 / h3 (mm)	295 / 370 / 440
Overall Length	L (mm)	1995
Overall Width	W (mm)	1100
Overall Height (excluding cab)	H (mm)	1280
Approach Angle	$\alpha 1$ (°)	$\geq 45$
Departure Angle	$\alpha 2$ (°)	$\geq 40$
Min Ground Clearance	X (mm)	90
Turning Radius	Wa (mm)	1650
Travel Speed, unladen	km/h	14.5
Travel Speed, laden	km/h	8
Gradeability, laden / unladen	%	7 / 15
Service Brake / Parking Brake		Hydraulic / Manual
Drive Control		AC
Drive Motor Rating *S2 60 min	kW	5.6
Steering Motor Rating *S2 5 min (Option)	kW	0.6
Battery Ampere Hours	Ah	400
Battery Weight	kg	680
Sound level at the drivers ear according to EN / DIN 12 053	dB (A)	<68

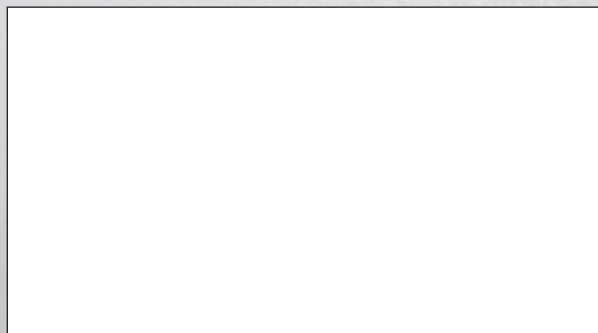




# HYSTER® DEALERS



Contact your nearest Hyster® Dealership  
by visiting [www.hyster.com.au](http://www.hyster.com.au)



## HYSTER PACIFIC

1 Bullecourt Avenue, Milperra NSW, Australia 2214  
Tel: +61 (2) 9795 38007 Fax: +61 (2) 9792 8484  
[hyster.com/pacific/en-au](http://hyster.com/pacific/en-au)

## HYSTER ASIA

16 Tuas Avenue 20, Singapore 638827  
Tel: +65 6863 3387 Fax: +65 6863 3349  
[hyster.com/asia/en-sg](http://hyster.com/asia/en-sg)



[/Hysterasiapacific](https://www.facebook.com/Hysterasiapacific)



[HysterJAPIC](https://www.linkedin.com/company/HysterJAPIC)



[Hyster Asia-Pacific](https://www.youtube.com/channel/UC...)