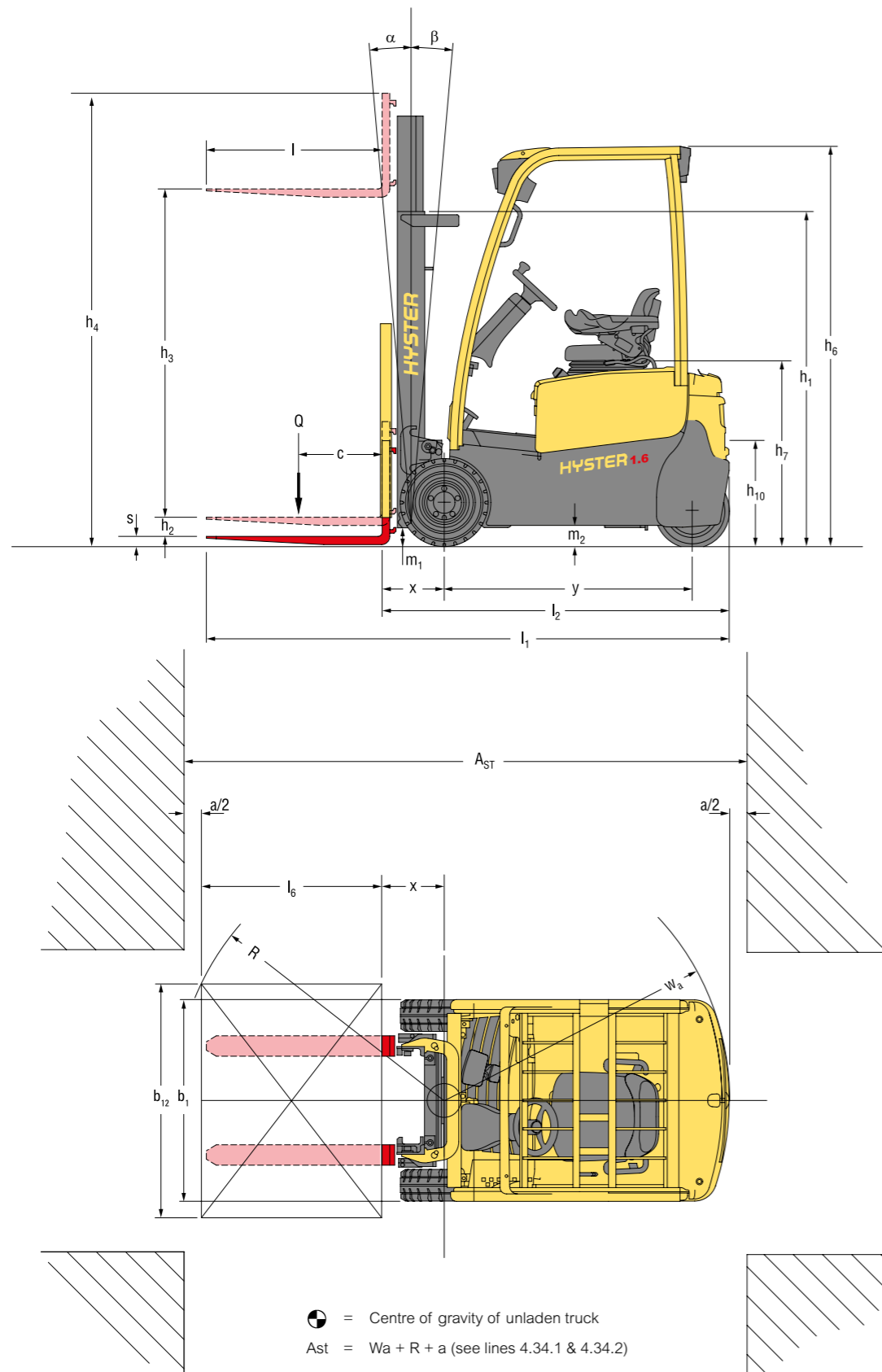


J1.5-2.0XNT SERIES



**THREE-WHEEL ELECTRIC
COUNTERBALANCED LIFT TRUCKS**
PRODUCT TECHNICAL GUIDE





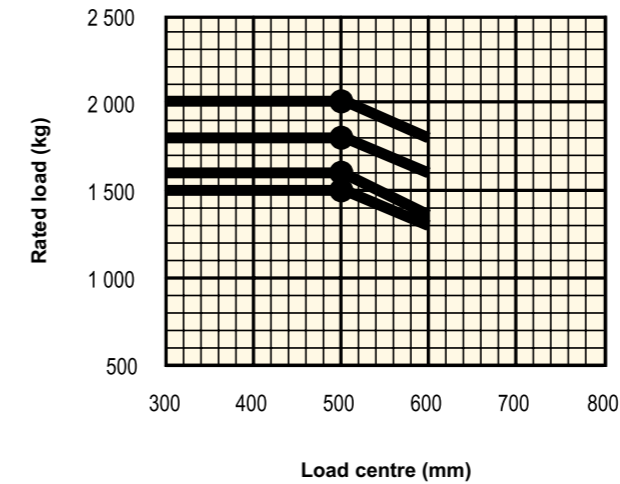
\odot = Centre of gravity of unladen truck
 $A_{ST} = W_a + R + a$ (see lines 4.34.1 & 4.34.2)
 $R = \sqrt{(l_6 + x)^2 + \left(\frac{b_{12} - b_{13}}{2}\right)^2}$
 a = Minimum operating clearance
 (VDI standard = 200mm BITA recommendation = 300mm)
 l_6 = Load length

			HYSTER			
			J1.5XNT (SWB)	J1.6XNT (SWB)	J1.6XNT (MWB)	J1.6XNT (LWB)
GENERAL	1-1	Manufacturer	HYSTER			
	1-2	Model designation				
	1-3	Drive	Electric (Battery)			
	1-4	Operator type	Seated			
	1-5	Rated capacity/rated load	Q	t	1.5	1.6
WEIGHT	1-6	Load centre distance	c	mm	500	
	1-8	Load distance, centre of drive axle to fork	x	mm	326	
	1-9	Wheelbase	y	mm	1290	1386 1494
	2-1	Service weight (1)		kg	2791	3083 3083 3258
	2-2	Axle loading, laden front / rear (1)		kg	3892 / 580	4096 / 587 4050 / 633 4056 / 802
WHEELS	2-3	Axle loading, unladen front / rear (1)		kg	1430 / 1541	1470 / 1613 1495 / 1588 1571 / 1687
	3-1	Tyres	Superelastic			
	3-2	Tyre size, front	18 x 7-8			
	3-3	Tyre size, rear	15 x 4.5-8			
	3-5	Wheels, number front / rear (x = drive wheels)	2X / 2			
	3-6	Standard tread width, front	b ₁₀	mm	889	
	3-7	Standard tread width, rear	b ₁₁	mm	194	
	4-1	Tilt of mast / fork carriage, forward / backward	α / β	(°)	5 / 5	
	4-2	Height, mast lowered	h ₁	mm	2230	
	DIMENSIONS	4-3	Free lift (2)	h ₂	mm	100
4-4		Lift (2)	h ₃	mm	3320	
4-5		Height, mast extended (3)	h ₄	mm	3898	
4-7		Height of overhead guard (cabin) (4)	h ₆	mm	2070	
4-7-1		Cab height (open cab)			2085	
4-8		Seat height relating to SIP/stand height (5)	h ₇	mm	919	
4-12		Coupling height	h ₁₀	mm	500	
4-19		Overall length	l ₁	mm	2807	2903 3011
4-20		Length to face of forks	l ₂	mm	1807	1903 2011
4-21		Overall width (6)	b ₁ /b ₂	mm	1050	
4-22		Fork Dimensions DIN ISO 2331	s/e/l	mm	40 / 80 / 1000	
4-23		Fork carriage ISO 2328, class/type A, B			2A	
4-24		Fork carriage width (7)	b ₃	mm	907	
4-31		Ground clearance, laden, below mast	m ₁	mm	70	
4-32		Ground clearance, centre of wheelbase (8)	m ₂	mm	100	
4-33		Load dimension b12 x l6 crossways	b ₁₂ x l ₆	mm	1000 x 1200	
4-34		Aisle width predetermined load dimensions	A _{st}	mm	3134	3132 3340
4-34-1		Aisle width with pallets 1000mm x 1200mm crossways (l6 x b12) (9)	A _{st}	mm	3134	3132 3340
4-34-2		Aisle width with pallets 800mm x 1200mm crossways (l6 x b12) (9)	A _{st}	mm	3257	3355 3463
4-35		Turning radius	W _a	mm	1479	1577 1685
4-36	Internal turning radius	b ₁₃	mm	0		
4-41	90° intersecting aisle (With pallet W = 1200mm, L = 1000mm)		mm	1718	1754 1798	
4-42	Step Height (from ground to running board)		mm	557		
4-43	Step Height		mm	484		
PERFORMANCE	5-1	Travel speed, laden/unladen (11)		km/h	16 / 16	
	5-1-1	Travel speed, laden/unladen, backwards		km/h	16 / 16	
	5-2	Lifting speed laden/unladen		m/s	0.43 / 0.59	
	5-3	Lowering speed laden/unladen		m/s	0.50 / 0.47	
	5-5	Drawbar pull with/without load **		N	3406 / 3680	
	5-6	Maximum drawbar pull, laden/unladen ***		N	11415 / 11690	
	5-7	Gradeability laden/unladen (10) ****		%	11 / 16	
	5-8	Maximum gradeability, laden/unladen (10) ***		%	25 / 34	
	5-9	Acceleration time, laden/unladen (11)		s	4.6 / 4.1	
	5-10	Service brake			Electric	
ELECTRIC ENGINE	6-1	Drive motor rating S2 60 min		kW	2x 5.0	
	6-2	Lift motor rating at S3 15%		kW	12	
	6-3	Battery according to DIN 43531/35/36 A, B, C, no			DIN 43531-A	
	6-4	Battery voltage/nominal capacity K5		V / Ah	48 / 500	48 / 625 48 / 750
	6-5	Battery weight (12)		kg	673 / 743	813 / 899 962 / 1064
	6-6	Fuel Consumption according to VDI cycle (11)		kWh/h @ Nr of Cycles	3.9	4.2
ADDITIONAL DATA	8-1	Type of drive unit	Electric Transmission			
	10-1	Operating pressure of attachments		bar	180	
	10-2	Oil volume flow for attachments (13)		l/min	40	
	10-3	Hydraulic oil tank capacity		litres	16.8	
	10-7	Sound pressure level at the driver's seat LPAZ (14)		dB(A)	69	
	10-8	Towing couple, type DIN			Pin	

Specification data is based on VDI 2198. ** 60 minute rating *** 5 minute rating **** 30 minute rating

		HYSTER					
		J1.8XNT (MWB)	J1.8XNT (LWB)	J2.0XNT (MWB)	J2.0XNT (LWB)		
GENERAL	1-1	Manufacturer	HYSTER				
	1-2	Model designation	J1.8XNT (MWB)	J1.8XNT (LWB)	J2.0XNT (MWB)		
	1-3	Drive	Electric (Battery)				
	1-4	Operator type	Seated				
	1-5	Rated capacity / rated load	Q	t	1.8	2.0	
WEIGHT	1-6	Load centre distance	c	mm	500		
	1-8	Load distance, centre of drive axle to fork	x	mm	321		
	1-9	Wheelbase	y	mm	1386	1494	
	2-1	Service weight (1)		kg	3335	3331	
	2-2	Axle loading, laden front / rear (1)		kg	4496 / 640	4435 / 695	
WHEELS	2-3	Axle loading, unladen front / rear (1)		kg	1628 / 1707	1646 / 1685	
	3-1	Tyres	Pneumatic Shape Solid				
	3-2	Tyre size, front	100 / 50-10				
	3-3	Tyre size, rear	15 x 4.5-8				
	3-5	Wheels, number front / rear (x = drive wheels)	2X / 2				
DIMENSIONS	3-6	Standard tread width, front	b ₁₀	mm	908		
	3-7	Standard tread width, rear	b ₁₁	mm	194		
	4-1	Tilt of mast / fork carriage, forward / backward	α / β	(°)	5 / 5		
	4-2	Height, mast lowered	h ₁	mm	2180		
	4-3	Free lift (2)	h ₂	mm	100		
	4-4	Lift (2)	h ₃	mm	3390		
	4-5	Height, mast extended (3)	h ₄	mm	4006		
	4-7	Height of overhead guard (cabin) (4)	h ₆	mm	2070		
	4-7-1	Cab height (open cab)			2085		
	4-8	Seat height relating to SIP/stand height (5)	h ₇	mm	919		
	4-12	Coupling height	h ₁₀	mm	500		
	4-19	Overall length	l ₁	mm	2898	3006	
	4-20	Length to face of forks	l ₂	mm	1898	2006	
	4-21	Overall width	b ₁ /b ₂	mm	1116		
	4-22	Fork Dimensions DIN ISO 2331	s/e/l	mm	40 / 80 / 1000		
	4-23	Fork carriage ISO 2328, class/type A, B			2A		
	4-24	Fork carriage width (7)	b ₃	mm	977		
	4-31	Ground clearance, laden, below mast	m ₁	mm	70		
	4-32	Ground clearance, centre of wheelbase (8)	m ₂	mm	100		
	4-33	Load dimension b12 x l6 crossways	b ₁₂ x l ₆	mm	1000 x 1200		
	4-34	Aisle width predetermined load dimensions	Ast		3228	3336	
	4-34-1	Aisle width with pallets 1000mm x 1200mm crossways (l6 x b12) (9)	Ast	mm	3228	3336	
	4-34-2	Aisle width with pallets 800mm x 1200mm crossways (l6 x b12) (9)	Ast	mm	3350	3458	
	4-35	Turning radius	Wa	mm	1577	1685	
	4-36	Internal turning radius	b ₁₃	mm	0		
	4-41	90° intersecting aisle (With pallet W = 1200mm, L = 1000mm)		mm	1776	1820	
	4-42	Step Height (from ground to running board)		mm	557		
	4-43	Step Height		mm	484		
	PERFORMANCE	5-1	Travel speed, laden/unladen (11)		km/h	16 / 16	
		5-1-1	Travel speed, laden/unladen, backwards		km/h	16 / 16	
		5-2	Lifting speed laden/unladen		m/s	0.41 / 0.60	0.40 / 0.58
		5-3	Lowering speed laden/unladen		m/s	0.46 / 0.40	0.47 / 0.40
		5-5	Drawbar pull with/without load **		N	3337 / 3646	3260 / 3603
		5-6	Maximum drawbar pull, laden/unladen ***		N	11355 / 11664	11346 / 11655
		5-7	Gradeability laden/unladen (10) ****		%	10 / 15	9 / 14
5-8		Maximum gradeability, laden/unladen (10) ****		%	23 / 35	23 / 36	
5-9		Acceleration time, laden/unladen (11)		s	4.6 / 4.1		
5-10		Service brake			Electric		
ELECTRIC ENGINE	6-1	Drive motor rating S2 60 min		kW	2x 5.0		
	6-2	Lift motor rating at S3 15%		kW	12		
	6-3	Battery according to DIN 43531/35/36 A, B, C, no			DIN 43531-A		
	6-4	Battery voltage/nominal capacity K5		V / Ah	48 / 625	48 / 750	
	6-5	Battery weight (12)		kg	813 / 899	962 / 1064	
	6-6	Fuel Consumption according to VDI cycle (11)		kWh/h @ Nr of Cycles	4.7	5.3	
ADDITIONAL DATA	8-1	Type of drive unit			Electric Transmission		
	10-1	Operating pressure of attachments		bar	180		
	10-2	Oil volume flow for attachments (13)		l/min	40		
	10-3	Hydraulic oil tank capacity		litres	16.8		
	10-7	Sound pressure level at the driver's seat LPAZ (14)		dB(A)	69		
	10-8	Towing couple, type DIN			Pin		

Specification data is based on VDI 2198. ** 60 minute rating *** 5 minute rating **** 30 minute rating



J2.0XNT
J1.8XNT
J1.6XNT
J1.5XNT

Load centre
Distance from front forks to centre of gravity of load.

Rated load
Based on vertical masts up to 3 430mm to top of forks.

NOTE:

Specifications are affected by the condition of the vehicle and how it is equipped, as well as the nature and condition of the operating area. Inform your dealer of the nature and condition of the intended operating area when purchasing your Hyster Truck.

- (1) Max. battery
- (2) Bottom of forks
- (3) Without load backrest
- (4) h6 subject to +/- 5 mm tolerance
- (5) Full suspension seat specified. Standard Hood specified. 953mm with raised hood.*
- (6) Overall width 1116 mm with required 200/50-10 tyres fitted for masts 5000mm and over.
- (7) add 32mm with load backrest
- (8) Value shown for vertical battery removal; horizontal battery removal has 90 mm of clearance at center of wheelbase.
- (9) Stacking aisle width (lines 4.34.1 & 4.34.2) is based on the VDI standard calculation as shown on illustration. The British Industrial Truck Association recommends the addition of 100 mm to the total clearance (dimension a) for extra operating margin at the rear of the truck.
- (10) Gradeability figures (lines 5.7 & 5.8) are provided for comparison of tractive performance, but are not intended to endorse the operation of the vehicle on the stated inclines. Follow instructions in the operating manual regarding operation on inclines.
- (11) HiP performance
- (12) min/max
- (13) maximum flow set through dash display.
- (14) LPAZ, measured according to the test cycles and based on the weighting values contained in EN12053.

NOTICE

Care must be exercised when handling elevated loads. When the carriage and/or load is elevated, truck stability is reduced. It is important that mast tilt in either direction be kept to a minimum when loads are elevated

Operators must be trained and must read, understand and follow the instructions contained in the Operating Manual.

All values are nominal values and they are subject to tolerances. For further information, please contact the manufacturer.

Hyster products might be subject to change without notice.

Lift trucks illustrated may feature optional equipment. Values may vary with alternative configurations.

CE Safety:

This truck conforms to the current EU requirements.

MAST AND CAPACITY INFORMATION

VISTA PLUS MASTS - J1.5XNT

	Overall lowered height h_1 (mm)	Free lift height (top of forks) h_2 (mm)	Maximum fork height h_3 (mm)	Overall extended height h_4 (mm)	s (mm)	Free lift height (top of forks) $h_2 + s$ (mm)	Maximum fork height (top of forks) $h_3 + s$ (mm)
2 STAGE LFL VISTA PLUS	2230	100	3320	3865 (1)	40	140	3360
	2580	100	3820	4365 (1)	40	140	3860
	2830	100	4320	4865 (1)	40	140	4360
	3180	100	4820	5365 (1)	40	140	4860
3 STAGE FFL VISTA PLUS	2080	1530 (2)	4560	5105 (3)	40	1570	4600
	2180	1630 (2)	4860	5405 (3)	40	1670	4900
	2330	1780 (2)	5160	5705 (3)	40	1820	5200
	2430	1880 (2)	5460	6005 (3)	40	1920	5500

VISTA MASTS - J1.5XNT

	Overall lowered height h_1 (mm)	Free lift height (top of forks) h_2 (mm)	Maximum fork height h_3 (mm)	Overall extended height h_4 (mm)	s (mm)	Free lift height (top of forks) $h_2 + s$ (mm)	Maximum fork height (top of forks) $h_3 + s$ (mm)
2 STAGE LFL VISTA	2180	100	3390	4005 (4)	40	140	3430
	2530	100	3890	4505 (4)	40	140	3930
	2780	100	4390	5005 (4)	40	140	4430
	3130	100	4890	5505 (4)	40	140	4930
2 STAGE FFL VISTA	2080	1465 (6)	3175	3725 (5)	40	1505	3215
	2330	1715 (6)	3675	4225 (5)	40	1755	3715
	2680	2065 (6)	4295	4845 (5)	40	2105	4335
	2030	1415 (6)	4560	5175 (5)	40	1455	4600
3 STAGE FFL VISTA	2130	1515 (6)	4860	5375 (5)	40	1555	4900
	2280	1665 (6)	5160	5775 (5)	40	1705	5200
	2380	1765 (6)	5460	6075 (5)	40	1805	5500

(1) Add for w/LBRE: 721. (2) Subtract w/LBRE: 723. (3) Add for w/LBRE: 723. (4) Add for w/LBRE: 656. (5) Add for w/LBRE: 655 (6) Subtract w/LBRE: 655

VISTA PLUS MASTS - J1.5XNT SWB - RATED CAPACITY KG@ 500, 600 & 700MM LOAD CENTRE

	J1.5XNT SWB							
	Mast tilt		Tyres: 18 x 7-8					
	Forward tilt (°)	Back tilt (°)	Width across tyres: 1047mm					
			Forks Load Centre			Integral Sideshift Load Centre		
500mm			600mm	700mm	500mm	600mm	700mm	
2 STAGE LFL VISTA PLUS	5	5	1500	1300	1300	1500	1300	1250
	5	5	1500	1300	1300	1500	1300	1250
	5	5	1480	1280	1280	1480	1280	1230
	5	5	1390	1210	1200	1390	1210	1150
3 STAGE FFL VISTA PLUS	5	5	1450	1250	1250	1450	1250	1190
	5	5	1390	1210	1200	1390	1210	1140
	5	5	1340	1160	1150	1340	1160	1090
	5	4	1280	1110	1100	1280	1110	1040

VISTA MASTS - J1.5XNT SWB - RATED CAPACITY KG@ 500, 600 & 700MM LOAD CENTRE

	J1.5XNT SWB							
	Mast tilt		Tyres: 18 x 7-8					
	Forward tilt (°)	Back tilt (°)	Width across tyres: 1047mm					
			Forks Load Centre			Integral Sideshift Load Centre		
500mm			600mm	700mm	500mm	600mm	700mm	
2 STAGE LFL VISTA	5	5	1500	1300	1300	1500	1300	1240
	5	5	1500	1300	1300	1500	1300	1240
	5	5	1480	1280	1280	1480	1280	1220
	5	5	1390	1210	1200	1390	1210	1140
2 STAGE FFL VISTA	5	5	1500	1300	1300	1500	1300	1250
	5	5	1500	1300	1300	1500	1300	1240
	5	5	1500	1300	1300	1500	1300	1240
	5	5	1470	1270	1270	1470	1270	1210
3 STAGE FFL VISTA	5	5	1420	1230	1230	1420	1230	1170
	5	5	1360	1180	1180	1360	1180	1120
	5	4	1300	1130	1130	1300	1130	1070

NOTE: The rated capacities shown are for masts in a vertical position on trucks equipped with standard or sideshift carriage and nominal length forks. Masts above the maximum fork heights shown in the mast table are classified as high lift and, depending on the tyre/tread configuration may require reduced capacity, restricted back tilt or wide tread. Note that the capacities are given in kilograms. All ratings with DIN Battery. All ratings with 1000mm forks and less load backrest. *Tilt speed reduced to 1° per second by mechanical tilt speed restrictors for mast heights 5000mm and above.

Values shown are for standard equipment. When using non-standard equipment these values may change. Please contact your Hyster dealer for information.

MAST AND CAPACITY INFORMATION

VISTA PLUS MASTS - J1.6XNT

	Overall lowered height h_1 (mm)	Free lift height (top of forks) h_2 (mm)	Maximum fork height h_3 (mm)	Overall extended height h_4 (mm)	s (mm)	Free lift height (top of forks) $h_2 + s$ (mm)	Maximum fork height (top of forks) $h_3 + s$ (mm)
2 STAGE LFL VISTA PLUS	2230	100	3320	3865 (1)	40	140	3360
	2580	100	3820	4365 (1)	40	140	3860
	2830	100	4320	4865 (1)	40	140	4360
	3180	100	4820	5365 (1)	40	140	4860
3 STAGE FFL VISTA PLUS	2080	1530 (2)	4560	5105 (3)	40	1570	4600
	2180	1630 (2)	4860	5405 (3)	40	1670	4900
	2330	1780 (2)	5160	5705 (3)	40	1820	5200
	2430	1880 (2)	5460	6005 (3)	40	1920	5500

VISTA MASTS - J1.6XNT

	Overall lowered height h_1 (mm)	Free lift height (top of forks) h_2 (mm)	Maximum fork height h_3 (mm)	Overall extended height h_4 (mm)	s (mm)	Free lift height (top of forks) $h_2 + s$ (mm)	Maximum fork height (top of forks) $h_3 + s$ (mm)
2 STAGE LFL VISTA	2180	100	3390	4005 (4)	40	140	3430
	2530	100	3890	4505 (4)	40	140	3930
	2780	100	4390	5005 (4)	40	140	4430
	3130	100	4890	5505 (4)	40	140	4930
2 STAGE FFL VISTA	2080	1465 (6)	3175	3725 (5)	40	1505	3215
	2330	1715 (6)	3675	4225 (5)	40	1755	3715
	2680	2065 (6)	4295	4845 (5)	40	2105	4335
	2030	1415 (6)	4560	5175 (5)	40	1455	4600
3 STAGE FFL VISTA	2130	1515 (6)	4860	5375 (5)	40	1555	4900
	2280	1665 (6)	5160	5775 (5)	40	1705	5200
	2380	1765 (6)	5460	6075 (5)	40	1805	5500

(1) Add for w/LBRE: 721. (2) Subtract w/LBRE: 723. (3) Add for w/LBRE: 723. (4) Add for w/LBRE: 656. (5) Add for w/LBRE: 655 (6) Subtract w/LBRE: 655

VISTA PLUS MASTS - J1.6XNT SWB - RATED CAPACITY KG@ 500, 600 & 700MM LOAD CENTRE

	Mast tilt		J1.6XNT SWB					
	Forward tilt (°)	Back tilt (°)	Tyres: 18 x 7-8					
			Width across tyres: 1047mm					
			Forks Load Centre			Integral Sideshift Load Centre		
500mm	600mm	700mm	500mm	600mm	700mm			
2 STAGE LFL VISTA PLUS	5	5	1600	1450	1390	1600	1450	1330
	5	5	1600	1450	1380	1600	1450	1330
	5	5	1580	1430	1360	1580	1430	1310
	5	5	1490	1350	1280	1490	1350	1230
3 STAGE FFL VISTA PLUS	5	5	1540	1400	1330	1540	1400	1270
	5	5	1490	1350	1280	1490	1350	1220
	5	5	1430	1300	1230	1430	1290	1170
	5	4	1380	1250	1180	1380	1230	1120

VISTA MASTS - J1.6XNT SWB - RATED CAPACITY KG@ 500, 600 & 700MM LOAD CENTRE

	Mast tilt		J1.6XNT SWB					
	Forward tilt (°)	Back tilt (°)	Tyres: 18 x 7-8					
			Width across tyres: 1047mm					
			Forks Load Centre			Integral Sideshift Load Centre		
500mm	600mm	700mm	500mm	600mm	700mm			
2 STAGE LFL VISTA	5	5	1600	1450	1390	1600	1450	1320
	5	5	1600	1450	1380	1600	1450	1310
	5	5	1580	1430	1370	1580	1430	1300
	5	5	1490	1350	1280	1490	1340	1220
2 STAGE FFL VISTA	5	5	1600	1450	1400	1600	1450	1330
	5	5	1600	1450	1390	1600	1450	1320
	5	5	1600	1450	1380	1580	1440	1310
	5	5	1570	1420	1360	1550	1420	1290
3 STAGE FFL VISTA	5	5	1520	1370	1310	1510	1370	1240
	5	5	1380	1320	1260	1320	1310	1190
	5	4	1400	1270	1200	1400	1260	1140

NOTE: The rated capacities shown are for masts in a vertical position on trucks equipped with standard or sideshift carriage and nominal length forks. Masts above the maximum fork heights shown in the mast table are classified as high lift and, depending on the tyre/tread configuration may require reduced capacity, restricted back tilt or wide tread. Note that the capacities are given in kilograms. All ratings with DIN Battery. All ratings with 1000mm forks and less load backrest. *Tilt speed reduced to 1° per second by mechanical tilt speed restrictors for mast heights 5000mm and above.

Values shown are for standard equipment. When using non-standard equipment these values may change. Please contact your Hyster dealer for information.

MAST AND CAPACITY INFORMATION

VISTA PLUS MASTS - J1.6XNT MWB - RATED CAPACITY KG@ 500, 600 & 700MM LOAD CENTRE

	Mast tilt		J1.6XNT MWB					
	Forward tilt (°)	Back tilt (°)	Tyres: 18 x 7-8					
			Width across tyres: 1047mm					
			Forks			Integral Sideshift		
Load Centre			Load Centre					
			500mm	600mm	700mm	500mm	600mm	700mm
2 STAGE LFL VISTA PLUS	5	5	1600	1450	1390	1600	1450	1330
	5	5	1600	1450	1380	1600	1450	1330
	5	5	1580	1430	1360	1580	1430	1310
	5	5	1490	1350	1280	1490	1350	1230
3 STAGE FFL VISTA PLUS	5	5	1540	1400	1330	1540	1400	1260
	5	5	1490	1350	1280	1490	1340	1220
	5	5	1430	1300	1230	1430	1290	1170
	5	4	1370	1240	1170	1370	1230	1120

VISTA MASTS - J1.6XNT MWB - RATED CAPACITY KG@ 500, 600 & 700MM LOAD CENTRE

	Mast tilt		J1.6XNT MWB					
	Forward tilt (°)	Back tilt (°)	Tyres: 18 x 7-8					
			Width across tyres: 1047mm					
			Forks			Integral Sideshift		
Load Centre			Load Centre					
			500mm	600mm	700mm	500mm	600mm	700mm
2 STAGE LFL VISTA	5	5	1600	1450	1390	1600	1450	1320
	5	5	1600	1450	1380	1600	1450	1310
	5	5	1580	1430	1370	1580	1430	1300
	5	5	1490	1350	1280	1490	1340	1220
2 STAGE FFL VISTA	5	5	1600	1450	1400	1600	1450	1330
	5	5	1600	1450	1390	1600	1450	1320
	5	5	1600	1450	1380	1600	1450	1310
	5	5	1570	1420	1360	1570	1420	1290
3 STAGE FFL VISTA	5	5	1520	1370	1310	1520	1370	1240
	5	5	1460	1320	1260	1380	1310	1190
	5	4	1400	1270	1200	1400	1260	1140

VISTA PLUS MASTS - J1.6XNT LWB - RATED CAPACITY KG@ 500, 600 & 700MM LOAD CENTRE

	Mast tilt		J1.6XNT LWB					
	Forward tilt (°)	Back tilt (°)	Tyres: 18 x 7-8					
			Width across tyres: 1047mm					
			Forks			Integral Sideshift		
Load Centre			Load Centre					
			500mm	600mm	700mm	500mm	600mm	700mm
2 STAGE LFL VISTA PLUS	5	5	1600	1450	1390	1600	1450	1330
	5	5	1600	1450	1380	1600	1450	1330
	5	5	1580	1430	1360	1580	1430	1310
	5	5	1500	1360	1290	1500	1360	1240
3 STAGE FFL VISTA PLUS	5	5	1550	1400	1330	1550	1400	1260
	5	5	1500	1360	1280	1500	1350	1220
	5	5	1330	1310	1230	1260	1260	1170
	5	4	1390	1260	1180	1390	1240	1120

VISTA MASTS - J1.6XNT LWB - RATED CAPACITY KG@ 500, 600 & 700MM LOAD CENTRE

	Mast tilt		J1.6XNT LWB					
	Forward tilt (°)	Back tilt (°)	Tyres: 18 x 7-8					
			Width across tyres: 1047mm					
			Forks			Integral Sideshift		
Load Centre			Load Centre					
			500mm	600mm	700mm	500mm	600mm	700mm
2 STAGE LFL VISTA	5	5	1600	1450	1390	1600	1450	1320
	5	5	1600	1450	1380	1600	1450	1310
	5	5	1580	1430	1370	1580	1430	1300
	5	5	1500	1360	1290	1500	1350	1220
2 STAGE FFL VISTA	5	5	1600	1450	1400	1600	1450	1330
	5	5	1600	1450	1390	1600	1450	1320
	5	5	1600	1450	1380	1600	1450	1310
	5	5	1570	1420	1360	1570	1420	1290
3 STAGE FFL VISTA	5	5	1520	1380	1310	1520	1370	1240
	5	5	1280	1280	1260	1210	1210	1200
	5	4	1410	1280	1210	1410	1270	1150

NOTE: The rated capacities shown are for masts in a vertical position on trucks equipped with standard or sideshift carriage and nominal length forks. Masts above the maximum fork heights shown in the mast table are classified as high lift and, depending on the tyre/tread configuration may require reduced capacity, restricted back tilt or wide tread. Note that the capacities are given in kilograms. All ratings with DIN Battery. All ratings with 1000mm forks and less load backrest. *Tilt speed reduced to 1" per second by mechanical tilt speed restrictors for mast heights 5000mm and above.

Values shown are for standard equipment. When using non-standard equipment these values may change. Please contact your Hyster dealer for information.

MAST AND CAPACITY INFORMATION

VISTA MASTS - J1.8XNT

	Overall lowered height h ₁ (mm)	Free lift height (top of forks) h ₂ (mm)	Maximum fork height h ₃ (mm)	Overall extended height h ₄ (mm)	s (mm)	Free lift height (top of forks) h ₂ + s (mm)	Maximum fork height (top of forks) h ₃ + s (mm)
2 STAGE LFL VISTA	2180	100	3390	4005 (4)	40	140	3430
	2530	100	3890	4505 (4)	40	140	3930
	2780	100	4390	5005 (4)	40	140	4430
	3130	100	4890	5505 (4)	40	140	4930
2 STAGE FFL VISTA	2080	1465 (6)	3175	3725 (5)	40	1505	3215
	2330	1715 (6)	3675	4225 (5)	40	1755	3715
	2680	2065 (6)	4295	4845 (5)	40	2105	4335
	2030	1415 (6)	4560	5175 (5)	40	1455	4600
3 STAGE FFL VISTA	2130	1515 (6)	4860	5375 (5)	40	1555	4900
	2280	1665 (6)	5160	5775 (5)	40	1705	5200
	2380	1765 (6)	5460	6075 (5)	40	1805	5500

(4) Add for w/LBRE: 656. (5) Add for w/LBRE: 655. (6) Subtract w/LBRE: 655

VISTA MASTS - J1.8XNT MWB - RATED CAPACITY KG@ 500, 600 & 700MM LOAD CENTRE

	Mast tilt		J1.8XNT MWB					
	Forward tilt (°)	Back tilt (°)	Tyres: 200 / 50-10					
			Width across tyres: 1129mm					
			Forks			Integral Sideshift		
Load Centre			Load Centre					
			500mm	600mm	700mm	500mm	600mm	700mm
2 STAGE LFL VISTA	5	5	1800	1600	1550	1800	1600	1470
	5	5	1800	1600	1540	1800	1600	1470
	5	5	1780	1580	1530	1780	1580	1450
	5	5	1580	1500	1440	1540	1500	1370
2 STAGE FFL VISTA	5	5	1800	1600	1560	1800	1600	1480
	5	5	1800	1600	1550	1800	1600	1470
	5	5	1800	1600	1540	1800	1600	1470
	5	5	1770	1570	1520	1770	1570	1440
3 STAGE FFL VISTA	5	5	1710	1520	1470	1710	1520	1390
	5	5	1650	1470	1410	1650	1470	1340
	5	4	1590	1410	1350	1580	1410	1290

VISTA MASTS - J1.8XNT LWB - RATED CAPACITY KG@ 500, 600 & 700MM LOAD CENTRE

	Mast tilt		J1.8XNT LWB					
	Forward tilt (°)	Back tilt (°)	Tyres: 200 / 50-10					
			Width across tyres: 1129mm					
			Forks			Integral Sideshift		
Load Centre			Load Centre					
			500mm	600mm	700mm	500mm	600mm	700mm
2 STAGE LFL VISTA	5	5	1800	1720	1550	1800	1630	1470
	5	5	1800	1710	1540	1800	1620	1470
	5	5	1780	1690	1530	1780	1600	1450
	5	5	1580	1580	1440	1540	1510	1370
2 STAGE FFL VISTA	5	5	1800	1730	1560	1800	1630	1480
	5	5	1800	1720	1550	1800	1630	1470
	5	5	1800	1710	1540	1800	1620	1470
	5	5	1770	1680	1520	1770	1590	1440
3 STAGE FFL VISTA	5	5	1710	1630	1470	1710	1540	1390
	5	5	1660	1570	1410	1650	1480	1340
	5	4	1590	1510	1360	1590	1420	1290

NOTE: The rated capacities shown are for masts in a vertical position on trucks equipped with standard or sideshift carriage and nominal length forks. Masts above the maximum fork heights shown in the mast table are classified as high lift and, depending on the tyre/tread configuration may require reduced capacity, restricted back tilt or wide tread. Note that the capacities are given in kilograms. All ratings with DIN Battery. All ratings with 1000mm forks and less load backrest. *Tilt speed reduced to 1" per second by mechanical tilt speed restrictors for mast heights 5000mm and above.

Values shown are for standard equipment. When using non-standard equipment these values may change. Please contact your Hyster dealer for information.

MAST AND CAPACITY INFORMATION

VISTA MASTS - J2.OXNT

	Overall lowered height h ₁ (mm)	Free lift height (top of forks) h ₂ (mm)	Maximum fork height h ₃ (mm)	Overall extended height h ₄ (mm)	s (mm)	Free lift height (top of forks) h ₂ + s (mm)	Maximum fork height (top of forks) h ₃ + s (mm)
2 STAGE LFL VISTA	2180	100	3390	4005 (4)	40	140	3430
	2530	100	3890	4505 (4)	40	140	3930
	2780	100	4390	5005 (4)	40	140	4430
	3130	100	4890	5505 (4)	40	140	4930
2 STAGE FFL VISTA	2080	1465 (6)	3175	3725 (5)	40	1505	3215
	2330	1715 (6)	3675	4225 (5)	40	1755	3715
	2680	2065 (6)	4295	4845 (5)	40	2105	4335
	2030	1415 (6)	4560	5175 (5)	40	1455	4600
3 STAGE FFL VISTA	2130	1515 (6)	4860	5375 (5)	40	1555	4900
	2280	1665 (6)	5160	5775 (5)	40	1705	5200
	2380	1765 (6)	5460	6075 (5)	40	1805	5500

(4) Add for w/LBRE: 656. (5) Add for w/LBRE: 655. (6) Subtract w/LBRE: 655

VISTA MASTS - J2.OXNT MWB - RATED CAPACITY KG@ 500, 600 & 700MM LOAD CENTRE

	Mast tilt		J2.OXNT MWB					
	Forward tilt (°)	Back tilt (°)	Tyres: 200 / 50-10					
			Width across tyres: 1129mm					
			Forks Load Centre			Integral Sideshift Load Centre		
		500mm	600mm	700mm	500mm	600mm	700mm	
2 STAGE LFL VISTA	5	5	2000	1800	1700	1990	1780	1620
	5	5	2000	1800	1690	1980	1780	1610
	5	5	1980	1780	1680	1950	1760	1590
	5	5	1570	1570	1570	1520	1520	1520
2 STAGE FFL VISTA	5	5	2000	1800	1710	2000	1790	1620
	5	5	2000	1800	1700	1990	1790	1620
	5	5	2000	1800	1690	1970	1780	1610
	5	5	1970	1770	1670	1940	1750	1580
3 STAGE FFL VISTA	5	5	1910	1720	1620	1890	1700	1540
	5	5	1850	1660	1560	1830	1640	1480
	5	4	1790	1610	1510	1760	1580	1430

VISTA MASTS - J2.OXNT LWB - RATED CAPACITY KG@ 500, 600 & 700MM LOAD CENTRE

	Mast tilt		J2.OXNT LWB					
	Forward tilt (°)	Back tilt (°)	Tyres: 200 / 50-10					
			Width across tyres: 1129mm					
			Forks Load Centre			Integral Sideshift Load Centre		
		500mm	600mm	700mm	500mm	600mm	700mm	
2 STAGE LFL VISTA	5	5	2000	1800	1700	1990	1780	1620
	5	5	2000	1800	1690	1980	1780	1610
	5	5	1980	1780	1680	1950	1760	1590
	5	5	1570	1570	1570	1520	1520	1500
2 STAGE FFL VISTA	5	5	2000	1800	1710	2000	1790	1620
	5	5	2000	1800	1700	1990	1790	1620
	5	5	2000	1800	1690	1980	1780	1610
	5	5	1970	1770	1670	1950	1750	1580
3 STAGE FFL VISTA	5	5	1910	1710	1610	1890	1690	1530
	5	5	1790	1660	1550	1720	1630	1480
	5	4	1650	1590	1490	1590	1570	1420

NOTE: The rated capacities shown are for masts in a vertical position on trucks equipped with standard or sideshift carriage and nominal length forks. Masts above the maximum fork heights shown in the mast table are classified as high lift and, depending on the tyre/tread configuration may require reduced capacity, restricted back tilt or wide tread. Note that the capacities are given in kilograms. All ratings with DIN Battery. All ratings with 1000mm forks and less load backrest. *Tilt speed reduced to 1° per second by mechanical tilt speed restrictors for mast heights 5000mm and above.

Values shown are for standard equipment. When using non-standard equipment these values may change. Please contact your Hyster dealer for information.

STANDARD & OPTIONAL EQUIPMENT

PERFORMANCE	STD	OPT
48 Volt	X	
Standard Construction	X	
Sub-Zero Freezer (-40° C to 30° C)		X
System Monitoring Package	X	
Battery Removal without Rollers - Lift Out	X	
Side Extraction (Using Fork Pockets)		X
Side Extraction (Using Rollers)		X
Primary DC/DC Converter	X	
Auxiliary DC/DC Converter		X
Without Battery	X	
Battery Options		X
Without Charger	X	
Charger Options		X
DRIVE	STD	OPT
Integrated Directional Switch	X	
MONOTROL® Directional Control Pedal		X
Tyres - Pneumatic Shaped Solid	X	
Tyres - Pneumatic Shaped Solid - Non-Marking		X
Steer Column with Infinitely Adjustable Tilt	X	
Telescopic Steering Column with Tilt Memory		X
Steering Wheel with Spinner Knob	X	
LIFT	STD	OPT
2 Stage Limited Free Lift Vista Mast - Class II	X	
2 Stage Limited Free Lift Vista Plus Mast - Class II		X
2 Stage Full Free Lift Vista Mast - Class II		X
3 Stage Full Free Lift Vista Mast - Class II		X
3 Stage Full Free Lift Vista Plus Mast - Class II		X
Without Mast		X
5° Forward / 5° Back Mast Tilt	X	
5° Forward / 4° Back Mast Tilt		X
HANDLING	STD	OPT
Hook Type Standard Carriage - 980mm	X	
Hook Type Standard Carriage - 910mm	X	
Hook Type Integral Sideshift Carriage - 980mm		X
Hook Type Integral Sideshift Carriage - 910mm		X
Hook Type Integral Sideshift Carriage with Fork Positioner - 980mm		X
Hook Type Integral Sideshift Carriage with Fork Positioner - 910mm		X
Without Carriage		X
Without Load Backrest	X	
1220mm High Load Backrest		X
Hook Type Standard Taper Forks - 1000mm	X	
Hook Type Standard Taper Forks - 1100mm		X
Hook Type Standard Taper Forks - 1200mm		X
Without Forks		X
3 Function (1 Auxiliary) Hydraulic Valve	X	
4 Function (2 Auxiliary) Hydraulic Valve		X
Manual Lever Hydraulic Controls	X	
Mini Lever Hydraulic Controls		X
Clamping Function		X
Return To Set Tilt Function		X
Without Hose Group	X	
3 Function Hose Group (1 Auxiliary)		X
4 Function Hose Group (2 Auxiliary)		X
Load Weight Display		X


VISIBILITY	STD	OPT
Audible Reverse Alarm		X
Amber Strobe Light - Ignition Activated		X
Without Lights	X	
Halogen Work Lights		X
Halogen Rear Lights		X
Halogen Rear Lights - Stop/Tail/Reverse		X
Halogen Rear Lights - Stop/Tail/Reverse/Turn		X
LED Work Lights		X
LED Rear Lights		X
LED Rear Lights - Stop/Tail/Reverse		X
LED Rear Lights - Stop/Tail/Reverse/Turn		X
ERGONOMICS	STD	OPT
Aftermarket Cabin Kit Ready Dash	X	
Overhead Guard - 2070mm	X	
Front/Top Cabin Panels with Front Wiper Motor All Chassis		X
Steel Modular Cab with PVC Doors		X
Full Steel Cab		X
Cab Heater		X
LED Dome / Reading Light	X	
Dual Mirrors Side View		X
Panoramic Mirror		X
12V Outlet - automotive style socket on dash		X
Full Suspension Vinyl Seat	X	
Full Suspension Cloth Seat		X
Full Suspension Swivel Vinyl Seat		X
Full Suspension Swivel Cloth Seat		X
Standard Seat Belt	X	
HI VIS Red Seat Belt		X
HI VIS Red Seat Belt with Interlock		X
Rear Drive Handle with Horn Button	X	
OPERATION	STD	OPT
Key Switch Start	X	
Key Switch Start with Operator Password		X
Keyless with Operator Password		X
Impact Sensor		X
Programmable Maintenance Reminder		X
Operator Pre-Shift Electronic Checklist		X
Two Battery Stands	X	
Conventional Battery Charge Truck Arrangement	X	
Gravity Feed Water Reservoir		X
Manual Filler Gun		X
Pressure Reduction Valve		X
Aquamatic Filling Trolley		X
SUPPLEMENTAL	STD	OPT
12 Months / 2,000 Hours Manufacturer's Warranty	X	
36 Months / 6,000 Hours Extended Warranty		X
48 Months / 8,000 Hours Comprehensive Protection Plan		X
Literature Package	X	

All values are nominal values and they are subject to tolerances.



HYSTER EUROPE
Centennial House, Building 4.5, Frimley Business Park,
Frimley, Surrey, GU16 7SG, United Kingdom

Visit us online at www.hyster.com or call us at **+44 (0) 1276 538500**.

HYSTER-YALE UK LIMITED trading as Hyster Europe.
Registered Address: Centennial House, Building 4.5, Frimley Business Park, Frimley, Surrey GU16 7SG, United Kingdom.
Registered in England and Wales. Company Registration Number: 02636775.
© HYSTER-YALE UK LIMITED. 2024, all rights reserved. Hyster and  are trademarks of Hyster-Yale Group, Inc.
Hyster products are subject to change without notice. Trucks may be shown with optional equipment.



Safety: This truck conforms to the current EU requirements