

# CLEAN POWER, PROVEN TOUGHNESS



HYSTER® A SERIES INDOOR/OUTDOOR  
ELECTRIC FORKLIFT



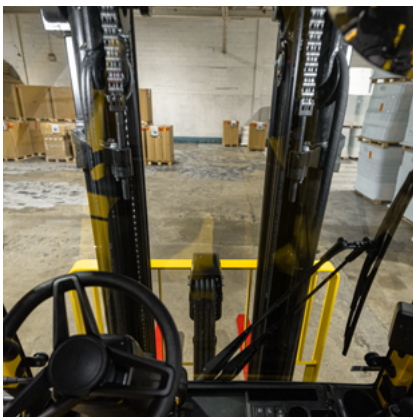
## CHARGE UP YOUR INDOOR AND OUTDOOR HANDLING TASKS

Introducing the robust and customisable Hyster J2.2-3.5A electric counterbalance forklift. Energy efficient, with a choice of batteries, you can combine clean power with the comfort, performance, and dependability needed in intensive and industrial operations.



## FLEXIBLE BATTERY POWER

A choice of lead-acid, lithium-ion, and TPPL (Thin Plate Pure Lead) options available.



## EXCEPTIONAL VISIBILITY

Confident and spacious operation with zero turn radius. Clear visibility with wide-view mast supports productivity.



## PROTECTION FOR ARDUOUS CONDITIONS

Take on the elements with enhanced environmental protection. With an IP67 rating for protection against dust and water damage.



## OPERATOR ASSIST & ERGONOMICS

Boost operational productivity with an ergonomic and comfortable working environment. Options include Operator Assistance Systems (OAS) and the Dynamic Stability System (DSS) to help reinforce safe operating practices.



## ENERGY EFFICIENCY


Optional enhanced permanent magnet motor package. Manage charging, extend runtime, and use batteries efficiently.

**ORDER FROM YOUR LOCAL HYSTER DEALER**



**HYSTER EUROPE**

T: +44 (0) 01276 538500 | E: [info@hyster.com](mailto:info@hyster.com) | [www.hyster.com](http://www.hyster.com)

HYSTER-YALE UK LIMITED trading as Hyster Europe. Registered Address: Centennial House, Building 4.5, Frimley Business Park, Frimley, Surrey GU16 7SG, United Kingdom.  
Registered in England and Wales. Company Registration Number: 02636775. ©2025 Hyster-Yale Materials Handling, Inc. all rights reserved. Hyster and  are trademarks of Hyster-Yale Materials Handling, Inc. Hyster products are subject to change without notice. Forklift trucks illustrated may be shown with optional equipment.  
Part number 3997365 J2.2-3.5A (B276) Leaflet - EN



Safety: This truck conforms to the current EU and UK CA requirements