

# J2.2-3.5XN SERIES

---

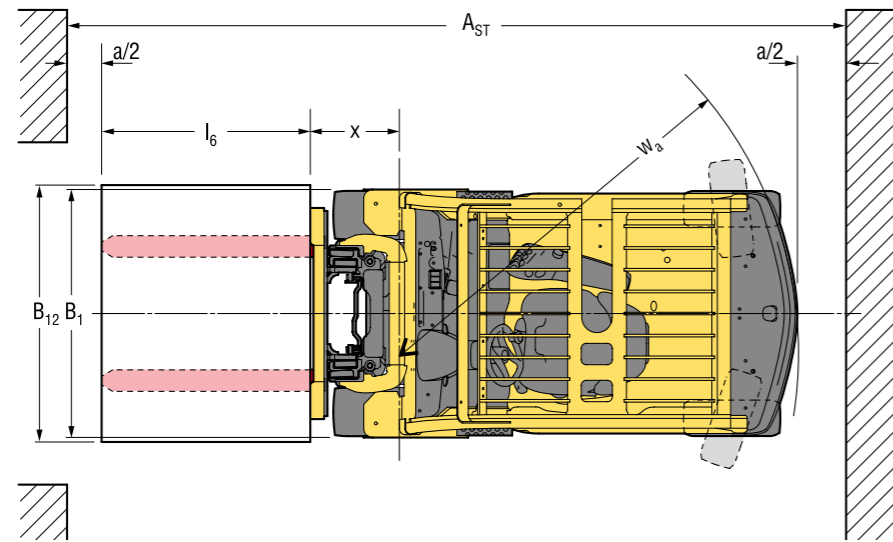
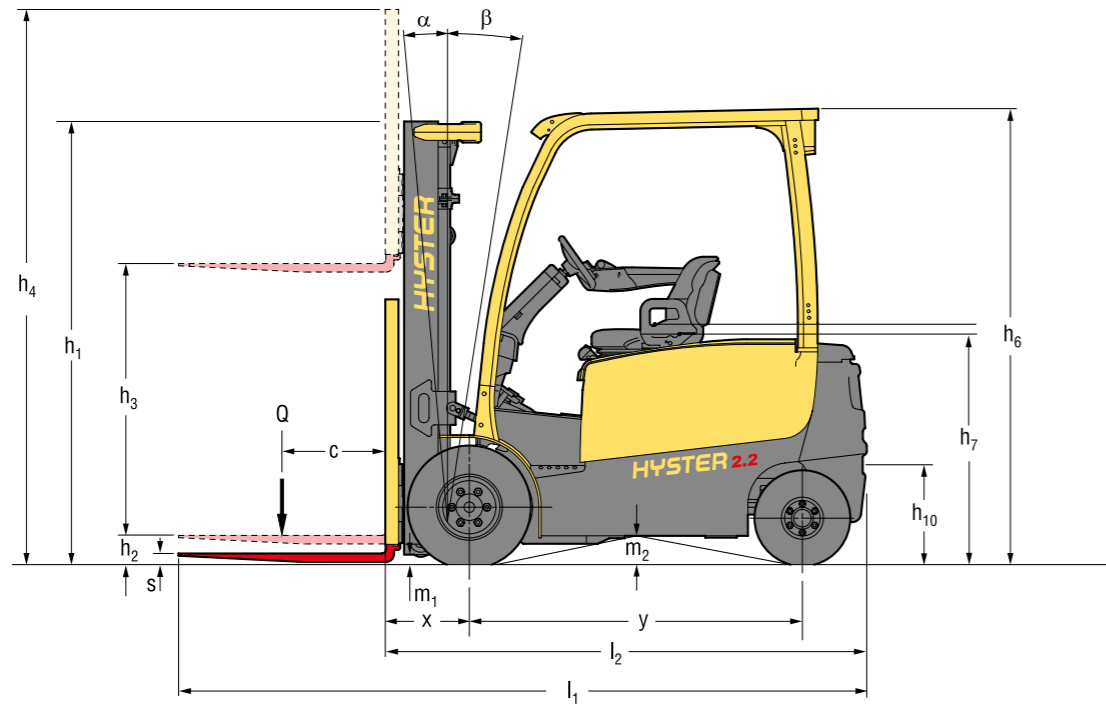


**ELECTRIC FORKLIFT**

**PRODUCT TECHNICAL GUIDE**



[WWW.HYSTER.COM](http://WWW.HYSTER.COM)



$\odot$  = Centre of gravity of unladen truck  
 Ast =  $W_a + R + a$  (see lines 4.34.1 & 4.34.2)  
 $R = \sqrt{(l_6 + x)^2 + \left(\frac{b_{12} - b_{13}}{2}\right)^2}$   
 a = Minimum operating clearance (VDI standard = 200 mm, BITA recommendation = 300 mm)  
 l<sub>6</sub> = Load length

GENERAL		HYSTER						
1-1 Manufacturer								
1-2 Model designation		J2.2XN	J2.5XN-717	J2.5XN-7861	J3.0XN	J3.5XN		
1-2-1 Model		Advance						
1-3 Drive		Electric (battery)						
1-4 Operator type		Seated						
1-5 Rated capacity / rated load		Q	kg	2200	2500	3000	3500	
1-6 Load centre distance		c	mm	500				
1-8 Load distance		x	mm	419		431		
1-9 Wheelbase		y	mm	1606		1750		
2-1 Service weight (1)		kg		4520		4930	5000	5320
2-2 Axle loading with load, front / rear (1)		kg		5739 / 977	6211 / 805	6283 / 1144	7157 / 841	7871 / 942
2-3 Axle loading without load, front / rear (1)		kg		2279 / 2236	2279 / 2236	2469 / 2458	2560 / 2438	2508 / 2805
3-1 Tyres		Pneumatic Shape Solid						
3-2 Tyre size, front		23 x 10 - 12						
3-3 Tyre size, rear		18 x 7 - 8						
3-5 Wheels, number front / rear (x = driven wheels)		2X / 2						
3-6 Tread, front *		b <sub>10</sub>	mm	938 / 1054				
3-7 Tread, rear		b <sub>11</sub>	mm	992				
4-1 Tilt of mast/fork carriage forward/backward		α/β	deg	5 / 5				
4-2 Height, mast lowered		h <sub>1</sub>	mm	2192				
4-3 Free lift (2)		h <sub>2</sub>	mm	100				
4-4 Lift (2)		h <sub>3</sub>	mm	3350		3155		
4-5 Height, mast extended (3)		h <sub>4</sub>	mm	3960		3865		
4-7 Height of overhead guard (4)		h <sub>6</sub>	mm	2193				
4-7-1 Height of cab		h <sub>6</sub>	mm	2206				
4-8 Seat height relating to SIP/stand height (5)		h <sub>7</sub>	mm	1070				
4-12 Coupling height		h <sub>10</sub>	mm	262				
4-19 Overall length		l <sub>1</sub>	mm	3336	3480	3492	3570	
4-20 Length to face of forks (6)		l <sub>2</sub>	mm	2336	2480	2492	2570	
4-21 Overall width *		b <sub>1</sub> / b <sub>2</sub>	mm	1173 / 1289				
4-22 Fork dimensions DIN ISO 2331		s/e/l	mm	40 / 100 / 1000		50 / 120 / 1000		
4-23 Fork carriage type ISO 2328, class/type A, B				2A		3A		
4-24 Fork carriage width (7)		b <sub>3</sub>	mm	1067				
4-31 Ground clearance, laden, below mast		m <sub>1</sub>	mm	83				
4-32 Ground clearance, centre of wheelbase		m <sub>2</sub>	mm	137				
4-33 Load dimensions b <sub>12</sub> x l <sub>6</sub> crossways		b <sub>12</sub> / l <sub>6</sub>	mm	1200 x 1000				
4-34 Aisle width with predetermined load dimensions		Ast	mm	3613	3750	3762	3828	
4-34-1 Aisle width with pallets 1000 wide x 1200 wide (8)		Ast	mm	3613	3750	3762	3828	
4-34-2 Aisle width with pallets 800 wide x 1200 long (8)		Ast	mm	3766	3906	3918	3984	
4-35 Turning radius		W <sub>a</sub>	mm	1931	2073		2139	
4-36 Internal turning radius		b <sub>13</sub>	mm	173	189			
4-41 90° intersecting aisle (With pallet W = 1200mm, L = 1000mm)				1981	2043	2076		
4-42 Step Height (from ground to running board) (9)				706 / 810				
4-43 Step Height				475				
5-1 Travel speed, with / without load (10)		km/h		18.0 / 18.0		17.0 / 18.0	16.0 / 18.0	
5-2 Lifting speed, with / without load		m/s		0.40 / 0.63	0.38 / 0.63		0.33 / 0.59	0.31 / 0.59
5-3 Lowering speed with / without load		m/s		0.57 / 0.51				
5-5 Drawbar pull, with / without load, 60 minute rating **		N	5468 / 5773	5591 / 5726		5441 / 5588	5478 / 5720	
5-6 Maximum drawbar pull, with / without load, 5 minute rating ***		N	18045 / 19052	18451 / 18897		17956 / 18441	18076 / 18875	
5-7 Gradeability, with / without load, 30 minute rating **** (11)		%	10 / 14	9 / 13		8 / 12	7 / 12	
5-8 Maximum gradeability, with / without load *** (11)		%	26 / 39	24 / 35		22 / 34	20 / 32	
5-9 Acceleration time, with / without load, 10m (10)		sec	4.42 / 4.11	4.45 / 4.11		4.56 / 4.18	4.60 / 4.23	
5-10 Service brake		Hydraulic						
6-1 Drive motor rating S2 60 min		kW		2 x 10.0				
6-2 Lift motor rating at S3 15%		kW		16.0				
6-3 Battery according to DIN 43531/35/36 A, B, C, no		43536A						
6-4 Battery voltage/nominal capacity K5		V	Ah	80 / 560		80 / 700		
6-5 Battery weight (min/max)		kg		1480 / 1635		1770 / 956		
6-6 Energy consumption according to VDI cycle (12)		kWh	h	6.68	7.00	7.89	8.66	10.03
8-1 Drive control		AC electronic						
10-1 Operating pressure for attachments		bar		155				
10-2 Oil volume for attachments (13)		l	min	20-40				
10-3 Hydraulic oil tank, capacity		l		29.3				
10-7 Sound pressure level at the driver's seat (14)		dB	A	67				
10-8 Towing coupling, type DIN		Pin						

(1) Max. battery  
 (2) Bottom of forks  
 (3) Without load backrest  
 (4) h<sub>1</sub> subject to +/- 5 mm tolerance. Add 20mm with cab option. Add 104mm for battery side removal option. Add 124mm for battery side removal with cab option  
 (5) Full suspension in compressed position specified. Add 40 mm for nominal position. Add 104 mm for battery side removal option.  
 (6) With sideshift carriage add 32mm for J2.2XN - J2.5XN-717, 34mm for J2.5XN-861 LWB, 33mm for J3.0XN, 32mm for J3.5XN  
 (7) Add 28 mm with load backrest  
 (8) Stacking aisle width (lines 4.34.1 & 4.34.2) is based on the VDI standard calculation as shown on illustration. The British Industrial Truck Association recommends the addition of 100 mm to the total clearance (dimension a) for extra operating margin at the rear of the truck.  
 (9) Vertical/horizontal battery removal  
 (10) HIP Performance settings  
 (11) Gradeability figures (lines 5.7 & 5.8) are provided for comparison of tractive performance, but are not intended to endorse the operation of the vehicle on the stated inclines. Follow instructions in the operating manual regarding operation on inclines.  
 (12) eLo Performance settings  
 (13) Maximum flow set through dash display.  
 (14) L<sub>w2</sub>, measured according to the test cycles and based on the weighting values contained in EN12053.  
 Specification data is based on VDI 2198  
 \* Standard / Wide tread  
 \*\* 60 minute rating  
 \*\*\* 5 minute rating  
 \*\*\*\* 30 minute rating

GENERAL	1-1		HYSTER						
	Manufacturer		J2.2XN	J2.5XN-717	J2.5XN-861	J3.0XN	J3.5XN		
	1-2	Model designation	Advance+						
	1-2-1	Model	Advance+						
	1-3	Drive	Electric (battery)						
	1-4	Operator type	Seated						
	1-5	Rated capacity / rated load	Q	kg	2200	2500	3000	3500	
	1-6	Load centre distance	c	mm	500				
	1-8	Load distance	x	mm	419		431		
	1-9	Wheelbase	y	mm	1606		1750		
WEIGHT	2-1	Service weight (1)		kg	4670	4870	5860	5300	5370
	2-2	Axle loading with load, front / rear (1)		kg	5640 / 1224	6114 / 1254	6183 / 1167	7055 / 1244	7752 / 1115
	2-3	Axle loading without load, front / rear (1)		kg	2018 / 2646	1805 / 3063	2067 / 2783	2090 / 3209	2209 / 3158
WHEELS	3-1	Tyres	Pneumatic Shape Solid						
	3-2	Tyre size, front	23 x 10 - 12						
	3-3	Tyre size, rear	18 x 7 - 8						
	3-5	Wheels, number front / rear (x = driven wheels)	2x / 2						
	3-6	Tread, front *	b <sub>10</sub>	mm	938 / 1054				
	3-7	Tread, rear	b <sub>11</sub>	mm	992				
DIMENSIONS	4-1	Tilt of mast/fork carriage forward/backward	α/β	deg	5 / 5				
	4-2	Height, mast lowered	h <sub>1</sub>	mm	2192				
	4-3	Free lift (2)	h <sub>2</sub>	mm	100				
	4-4	Lift (2)	h <sub>3</sub>	mm	3350		3155		
	4-5	Height, mast extended (3)	h <sub>4</sub>	mm	3960		3865		
	4-7	Height of overhead guard (4)	h <sub>6</sub>	mm	2193				
	4-7-1	Height of cab	h <sub>6</sub>	mm	2206				
	4-8	Seat height relating to SIP/stand height (5)	h <sub>7</sub>	mm	1070				
	4-12	Coupling height	h <sub>10</sub>	mm	262				
	4-19	Overall length	l <sub>1</sub>	mm	3336	3480	3492	3570	
	4-20	Length to face of forks (6)	l <sub>2</sub>	mm	2336	2480	2492	2570	
	4-21	Overall width *	b <sub>1</sub> / b <sub>2</sub>	mm	1173 / 1289				
	4-22	Fork dimensions DIN ISO 2331	s/e/l	mm	40 / 100 / 1000		50 / 120 / 1000		
	4-23	Fork carriage type ISO 2328, class/type A, B			2A		3A		
	4-24	Fork carriage width (7)	b <sub>3</sub>	mm	1067				
	4-31	Ground clearance, laden, below mast	m <sub>1</sub>	mm	83				
	4-32	Ground clearance, centre of wheelbase	m <sub>2</sub>	mm	137				
	4-33	Load dimensions b <sub>12</sub> x l <sub>6</sub> crossways	b <sub>12</sub> / l <sub>6</sub>	mm	1200 x 1000				
	4-34	Aisle width with predetermined load dimensions	Ast	mm	3613	3750	3762	3828	
	4-34-1	Aisle width with pallets 1000 wide x 1200 wide (8)	Ast	mm	3613	3750	3762	3828	
	4-34-2	Aisle width with pallets 800 wide x 1200 long (8)	Ast	mm	3766	3906	3918	3984	
4-35	Turning radius	W <sub>a</sub>	mm	1931	2073		2139		
4-36	Internal turning radius	b <sub>13</sub>	mm	173	189				
4-41	90° intersecting aisle (With pallet W = 1200mm, L = 1000mm)		mm	1981	2043		2076		
4-42	Step Height (from ground to running board) (9)		mm	706 / 810					
4-43	Step Height		mm	475					
PERFORMANCE	5-1	Travel speed, with / without load (10)		km/h	21.0 / 21.0		19.5 / 21.0	18.0 / 21.0	
	5-2	Lifting speed, with / without load		m/s	0.52 / 0.72	0.49 / 0.72	0.42 / 0.63	0.37 / 0.63	
	5-3	Lowering speed with / without load		m/s	0.57 / 0.51		0.56 / 0.46	0.58 / 0.46	
	5-5	Drawbar pull, with / without load, 60 minute rating **	N		6015 / 6235	6037 / 6185	5877 / 6035	5918 / 6177	
	5-6	Maximum drawbar pull, with / without load, 5 minute rating ***	N		19849 / 20576	19927 / 20409	19393 / 19916	19522 / 20385	
	5-7	Gradeability, with / without load, 30 minute rating **** (11)	%		11 / 16	10 / 14	9 / 13	8 / 13	
	5-8	Maximum gradeability, with / without load *** (11)	%		28 / 42	26 / 38	24 / 37	22 / 35	
	5-9	Acceleration time, with / without load, 10m (10)	sec		4.04 / 3.71		4.14 / 3.78	4.19 / 3.83	
	5-10	Service brake			Hydraulic				
	ELECTRIC DRIVE	6-1	Drive motor rating S2 60 min		kW	2 x 10.0			
6-2		Lift motor rating at S3 15%		kW	24.0				
6-3		Battery according to DIN 43531/35/36 A, B, C, no			43536A				
6-4		Battery voltage/nominal capacity K5	V	Ah	80 / 560		80 / 700		
6-5		Battery weight (min/max)	kg		1480 / 1635		1770 / 956		
6-6		Energy consumption according to VDI cycle (12)	kWh	h	7.51	7.87	8.86	8.66	10.03
ADDITIONAL DATA	8-1	Drive control			AC electronic				
	10-1	Operating pressure for attachments		bar	155				
	10-2	Oil volume for attachments (13)	l	min	20-40				
	10-3	Hydraulic oil tank, capacity	l		29.3				
	10-7	Sound pressure level at the driver's seat (14)	dB	A	68				
	10-8	Towing coupling, type DIN			Pin				

(1) Max. battery  
(2) Bottom of forks  
(3) Without load backrest  
(4) h<sub>2</sub> subject to +/- 5 mm tolerance. Add 20mm with cab option. Add 104mm for battery side removal option. Add 124mm for battery side removal with cab option  
(5) Full suspension in compressed position specified. Add 40 mm for nominal position. Add 104 mm for battery side removal option.  
(6) With sideshift carriage add 32mm for J2.2XN - J2.5XN-717, 34mm for J2.5XN-861 LWB, 33mm for J3.0XN, 32mm for J3.5XN  
(7) Add 28 mm with load backrest  
(8) Stacking aisle width (lines 4.34.1 & 4.34.2) is based on the VDI standard calculation as shown on illustration. The British Industrial Truck Association recommends the addition of 100 mm to the total clearance (dimension a) for extra operating margin at the rear of the truck.  
(9) Vertical/horizontal battery removal  
(10) HIP Performance settings  
(11) Gradeability figures (lines 5.7 & 5.8) are provided for comparison of tractive performance, but are not intended to endorse the operation of the vehicle on the stated inclines. Follow instructions in the operating manual regarding operation on inclines.  
(12) eLo Performance settings  
(13) Maximum flow set through dash display.  
(14) L<sub>wd</sub>, measured according to the test cycles and based on the weighting values contained in EN12053.  
Specification data is based on VDI 2198  
- Standard / Wide tread  
- 60 minute rating  
- 5 minute rating  
- 30 minute rating

Values shown are for standard equipment. When using non-standard equipment these values may change. Please contact your Hyster dealer for information.

VISTA MASTS J2.2-2.50XN

	Maximum fork height h <sub>3</sub> + s (mm) (11)	Back tilt (°)	Overall lowered height h <sub>1</sub> (mm)	Overall extended height h <sub>4</sub> (mm)	Free lift height (top of forks) h <sub>2</sub> + s (mm) (12)
Vista 2-Stage limited free lift	3390	5°	2195	3956 (1)	140
	3790	5°	2395	4356 (1)	140
	4330	5°	2745	4896 (1)	140
	4830	5°	2995	5396 (1)	140
Vista 2-Stage full free lift	3400	5°	2195	3966 (1)	1625 (2)
Vista 3-Stage limited free lift	4950	5°	2145	5496 (3)	1595 (4)
	5550	5°	2395	6096 (3)	1845 (4)
	6000	5°	2595	6546 (3)	2045 (4)

VISTA MASTS J3.0-3.5XN

	Maximum fork height h <sub>3</sub> + s (mm) (11)	Back tilt (°)	Overall lowered height h <sub>1</sub> (mm)	Overall extended height h <sub>4</sub> (mm)	Free lift height (top of forks) h <sub>2</sub> + s (mm) (12)
Vista 2-Stage limited free lift	3200	5°	2195	3861 (5)	145
	3600	5°	2395	4261 (5)	145
	4100	5°	2745	4761 (5)	145
	4600	5°	2990	5261 (5)	145
Vista 2-Stage full free lift	3205	5°	2195	3862 (5)	1535 (6)
Vista 3-Stage limited free lift	4610	5°	2145	5252 (7)	1500 (8)
	4910	5°	2295	5552 (7)	1650 (8)
	5210	5°	2395	5852 (7)	1750 (8)
	5810	5°	2645	6452 (7)	2000 (8)

J2.2-3.5XN - CAPACITY CHART IN KG @ 500 MM LOAD CENTRES

	Maximum fork height (11) (mm) (h3 + s)	Pneumatic Shaped Solid Tyres											
		WITHOUT sideshift (kg)				WITH integral sideshift			Maximum fork height (11) (mm) (h3 + s)	WITHOUT sideshift (kg)		WITH integral sideshift	
		J2.2XN 717 (9)	J2.5XN 717 (9)	J2.5XN 861 (9)	J2.2XN 717 (9)	J2.5XN 717 (9)	J2.5XN 861 (9)	J3.0XN 861 (9)		J3.5XN 861 (9)	J3.0XN 861 (9)	J3.5XN 861 (9)	
Vista 2-Stage limited free lift	3390	2200	2500	2500	2200	2490	2500	3200	3000	3500	2960	3440	
	3790	2200	2500	2500	2200	2490	2500	3600	3000	3500	2950	3430	
	4330	2200	2500	2500	2200	2470	2500	4100	3000	3500	2940	3420	
	4830	2200	2480	2500	2190	2440	2500	4600	2920	3410	2850	3330	
Vista 2-Stage full free lift	3400	2200	2500	2500	2200	2500	2500	3205	3000	3500	2960	3440	
Vista 3-Stage limited free lift	4950	2200	2440	2500	2180	2400	2500	4610	2970	3460	2900	3370	
	5550	2110	2310	2410	2070	2250	2380	4910	2900	3400	2830	3300	
	6000	2020	2210	2310	1980	2150	2290	5210	2840	3320 (10)	2760	3220 (10)	
								5810	2690	3170 (10)	2600	3060 (10)	

J2.2-3.5XN - CAPACITY CHART IN KG @ 600 MM LOAD CENTRES

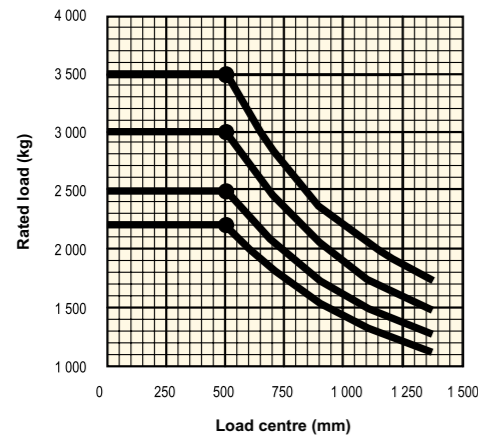
	Maximum fork height (11) (mm) (h3 + s)	Pneumatic Shaped Solid Tyres											
		WITHOUT sideshift (kg)				WITH integral sideshift			Maximum fork height (11) (mm) (h3 + s)	WITHOUT sideshift (kg)		WITH integral sideshift	
		J2.2XN 717 (9)	J2.5XN 717 (9)	J2.5XN 861 (9)	J2.2XN 717 (9)	J2.5XN 717 (9)	J2.5XN 861 (9)	J3.0XN 861 (9)		J3.5XN 861 (9)	J3.0XN 861 (9)	J3.5XN 861 (9)	
Vista 2-Stage limited free lift	3390	2000	2270	2270	2000	2250	2270	3200	2720	3130	2680	3110	
	3790	2000	2270	2270	2000	2250	2270	3600	2720	3130	2670	3100	
	4330	2000	2270	2270	1990	2240	2270	4100	2720	3130	2660	3090	
	4830	2000	2250	2270	1980	2210	2270	4600	2650	3090	2580	3010	
Vista 2-Stage full free lift	3400	2000	2270	2270	2000	2260	2270	3205	2720	3130	2680	3110	
Vista 3-Stage limited free lift	4950	2000	2210	2270	1970	2170	2250	4610	2690	3130	2620	3050	
	5550	1920	2100	2190	1870	2030	2150	4910	2630	3080	2560	2980	
	6000	1830	2000	2100	1790	1940	2070	5210	2570	3010 (10)	2500	2920 (10)	
								5810	2440	2870 (10)	2350	2760 (10)	

NOTE: To calculate truck capacities with alternative truck specifications to the ones shown in the above tables, please consult your Hyster dealer. The rated capacities shown are for masts in a vertical position on trucks equipped with standard or sideshift carriage and nominal length forks. Masts above the maximum fork heights shown in the mast table are classified as high lift and, depending on the tyre/tread configuration may require reduced capacity, restricted back tilt or wide tread.

- Add 666mm with load backrest extension.
- Deduct 666mm with load backrest extension.
- Add 684mm with load backrest extension
- Deduct 684mm with load backrest extension.
- Add 583mm with load backrest extension.
- Deduct 583mm with load backrest extension.
- Add 601mm with load backrest extension.

- Deduct 601mm with load backrest extension.
- Nominal Battery compartment length.
- Wide tread required. Standard tread possible but with reduced capacity. Contact your lift truck dealer
- Max fork height = h<sub>3</sub>+s
- Freelift (top of forks) = h<sub>2</sub>+s

# RATED CAPACITIES



**Load centre**  
Distance from front forks to centre of gravity of load.

**Rated load**  
Based on 3-Stage full free lift vertical masts up to 5100mm bottom of forks.

J3.5XN  
J3.0XN  
J2.5XN  
J2.2XN

### NOTES:

Specifications are affected by the condition of the vehicle and how it is equipped, as well as the nature and condition of the operating area. Inform your dealer of the nature and condition of the intended operating area when purchasing your Hyster® truck.

### NOTICE:

Care must be exercised when handling elevated loads. Operators must be trained and must read, understand and follow the instructions contained in the Operating Manual. All values are nominal values and they are subject to tolerances. For further information, please contact the manufacturer.

Hyster products are subject to change without notice.

Lift trucks illustrated may feature optional equipment. Values may vary with alternative configurations.

### EQUIPMENT & WEIGHT:

Weights (line 2.1) are based on the following specifications: Complete truck with 3 390 mm (J2.5-2.5XN) or 3 200 mm (J3.0-3.5XN) 2-stage limited free lift mast, standard carriage and 1000 mm forks with load backrest with extended shift on with DIN battery configuration, standard seat and overhead guard and pneumatic shaped solid drive and steer tyres.

*CERTIFICATION: Hyster lift trucks meet the design and construction requirements of B56.1-1969, per OSHA Section 1910.178(a)(2), and also comply with the B56.1 revision in effect at time of manufacture. Certification of compliance with the applicable ANSI standards appears on the lift truck. Performance specifications are for a truck equipped as described under Standard Equipment on this Technical Guide. Performance specifications are affected by the condition of the vehicle and how it is equipped, as well as by the nature, condition of the operating area, proper service and maintenance of the vehicle. If these specifications are critical, the proposed application should be discussed with your dealer.*

*NOTE: Specifications, unless otherwise listed, are for a standard truck without optional equipment.*

*Specification data is based on VDI 2198.*

**CE UK CA** Safety: This truck conforms to the current EU, UK CA and ANSI requirements.

# STANDARD EQUIPMENT AND OPTIONS


PERFORMANCE	STD	OPT
80 Volt	X	
Advance Performance	X	
Standard Construction	X	
Sealed Drive Axle, Belly Pan & Side Shields	X	
Advance: Low Noise Performance		X
Sub-Zero Freezer (-40° C to 30° C)		X
Outdoor Protection / Washdown Package		X
Advance+ Performance		X
Advance+: Low Noise Performance		X
System Monitoring Package	X	
Battery Removal without Rollers - Lift Out	X	
Hinged Door	X	
Removable Panels	X	
Side Extraction (Using Fork Pockets)		X
Side Extraction (Using Rollers)		X
Primary DC/DC Converter	X	
Auxiliary DC/DC Converter		X
Without Battery	X	
Battery Options		X
Without Charger	X	
Charger Options		X
DRIVE	STD	OPT
Integrated Directional Switch	X	
MONOTROL® Directional Control Pedal		X
Tyres - Super Elastic	X	
Tyres - Super Elastic - Non-Marking		X
Standard Tread	X	
Wide Tread		X
Steer Column with Infinitely Adjustable Tilt	X	
Telescopic Steering Column with Tilt Memory		X
Steering Wheel with Spinner Knob	X	
On Demand Power Steering	X	
On Demand Power Steering with Synchronous Steering		X
LIFT	STD	OPT
2 Stage Limited Free Lift Mast - Class II/III	X	
2 Stage Full Free Lift Mast - Class II/III		X
3 Stage Full Free Lift Mast - Class II/III		X
5° Forward / 5° Back Mast Tilt	X	
5° Forward / 4° Back Mast Tilt		X
HANDLING	STD	OPT
With Tilt Cylinder Boots	X	
Hook Type Standard Carriage - 1070mm	X	
Hook Type Integral Sideshift Carriage - 1070mm		X
Hook Type Integral Sideshift Carriage with Fork Positioner - 1070mm		X
Without Load Backrest	X	
1220mm High Load Backrest		X
Hook Type Standard Taper Forks - 1000mm	X	
Hook Type Standard Taper Forks - 1100mm	X	
Hook Type Standard Taper Forks - 1200mm	X	
3 Function (1 Auxiliary) Hydraulic Valve	X	
4 Function (2 Auxiliary) Hydraulic Valve		X
Manual Lever Hydraulic Controls	X	
Mini Lever Hydraulic Controls		X
Clamping Function		X
Return To Set Tilt Function		X
Without Hose Group	X	
3 Function Hose Group (1 Auxiliary)		X
4 Function Hose Group (2 Auxiliary)		X

VISIBILITY	STD	OPT
Audible Reverse Alarm		X
Amber Strobe Light - Ignition Activated		X
Without Lights	X	
Halogen Work Lights		X
Halogen Rear Lights		X
Halogen Rear Lights - Stop/Tail/Reverse		X
Halogen Rear Lights - Stop/Tail/Reverse/Turn		X
LED Work Lights		X
LED Rear Lights		X
LED Rear Lights - Stop/Tail/Reverse		X
LED Rear Lights - Stop/Tail/Reverse/Turn		X
ERGONOMICS	STD	OPT
Aftermarket Cabin Kit Ready Dash	X	
Overhead Guard - 2193mm/2297mm	X	
Front/Top Cabin Panels with Front Wiper Motor All Chassis		X
Steel Modular Cab with PVC Doors		X
Full Steel Cab		X
Heater and Demister		X
LED Dome / Reading Light		X
Dual Mirrors Side View		X
Panoramic Mirror		X
12V Outlet - automotive style socket on dash		X
Full Suspension Vinyl Seat	X	
Full Suspension Cloth Seat		X
Full Suspension Swivel Vinyl Seat		X
Full Suspension Swivel Cloth Seat		X
High Backrest Lumbar Support Vinyl Seat with Headrest		X
High Backrest Lumbar Support Cloth Seat with Headrest		X
Standard Seat Belt	X	
HI VIS Red Seat Belt		X
HI VIS Red Seat Belt with Interlock		X
OPERATION	STD	OPT
Key Switch Start	X	
Key Switch Start with Operator Password		X
Keyless with Operator Password		X
Impact Sensor		X
Programmable Maintenance Reminder		X
Operator Pre-Shift Electronic Checklist		X
Two Battery Stands	X	
Conventional Battery Charge Truck Arrangement	X	
Gravity Feed Water Reservoir		X
Manual Filler Gun		X
Pressure Reduction Valve		X
Aquamatic Filling Trolley		X
Front Mud Guard and Rear Mud Shield		X
SUPPLEMENTAL	STD	OPT
12 Months / 2,000 Hours Manufacturer's Warranty	X	
36 Months / 6,000 Hours Extended Warranty		X
48 Months / 8,000 Hours Comprehensive Protection Plan		X
Literature Package	X	



**HYSTER EUROPE**  
Centennial House, Building 4.5, Frimley Business Park,  
Frimley, Surrey, GU16 7SG, United Kingdom

Visit us online at [www.hyster.com](http://www.hyster.com) or call us at **+44 (0) 1276 538500**.

HYSTER-YALE UK LIMITED trading as Hyster Europe.  
Registered Address: Centennial House, Building 4.5, Frimley Business Park, Frimley, Surrey GU16 7SG, United Kingdom.  
Registered in England and Wales. Company Registration Number: 02636775.  
© HYSTER-YALE UK LIMITED. 2023, all rights reserved. Hyster and  are trademarks of Hyster-Yale Group, Inc.  
Hyster products are subject to change without notice. Trucks may be shown with optional equipment.

