

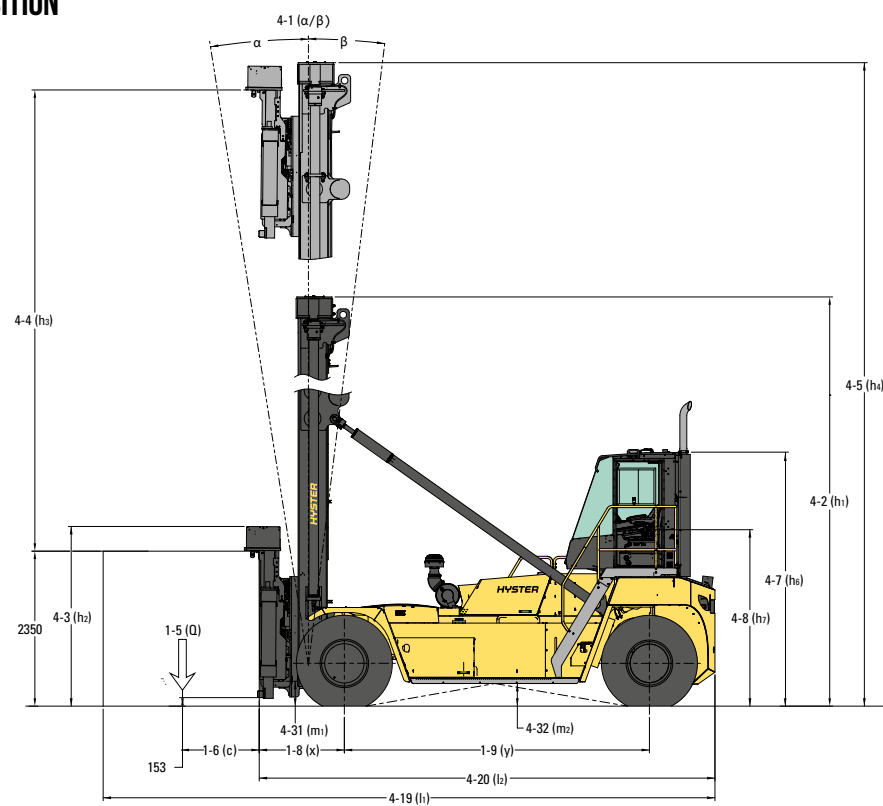
H8-9XD EC6-8 / H9-11XD ECD7-9 SERIES



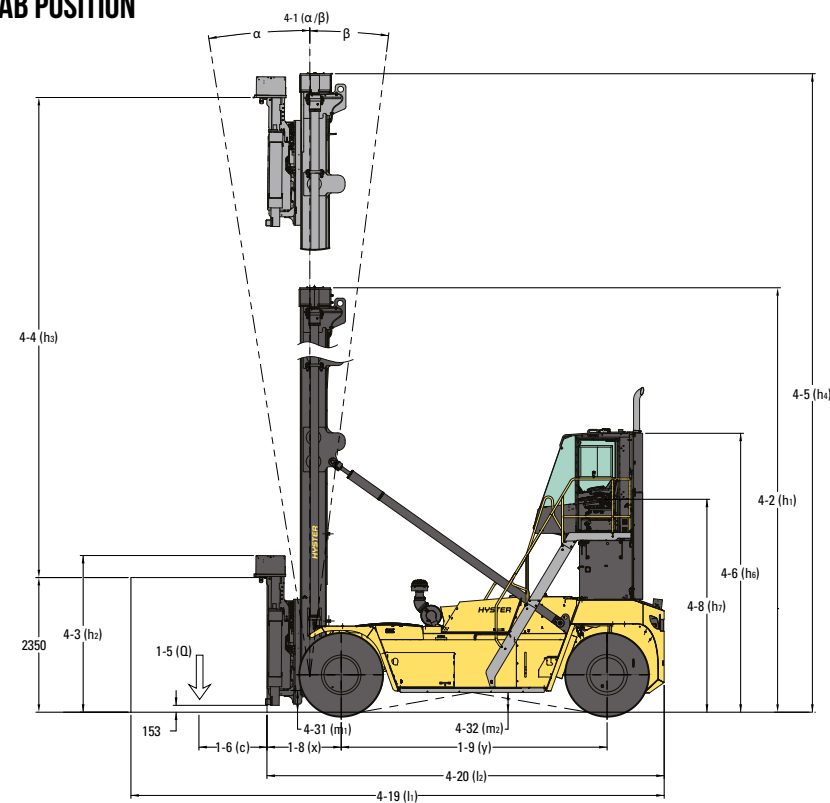
EMPTY CONTAINER HANDLER PRODUCT TECHNICAL GUIDE



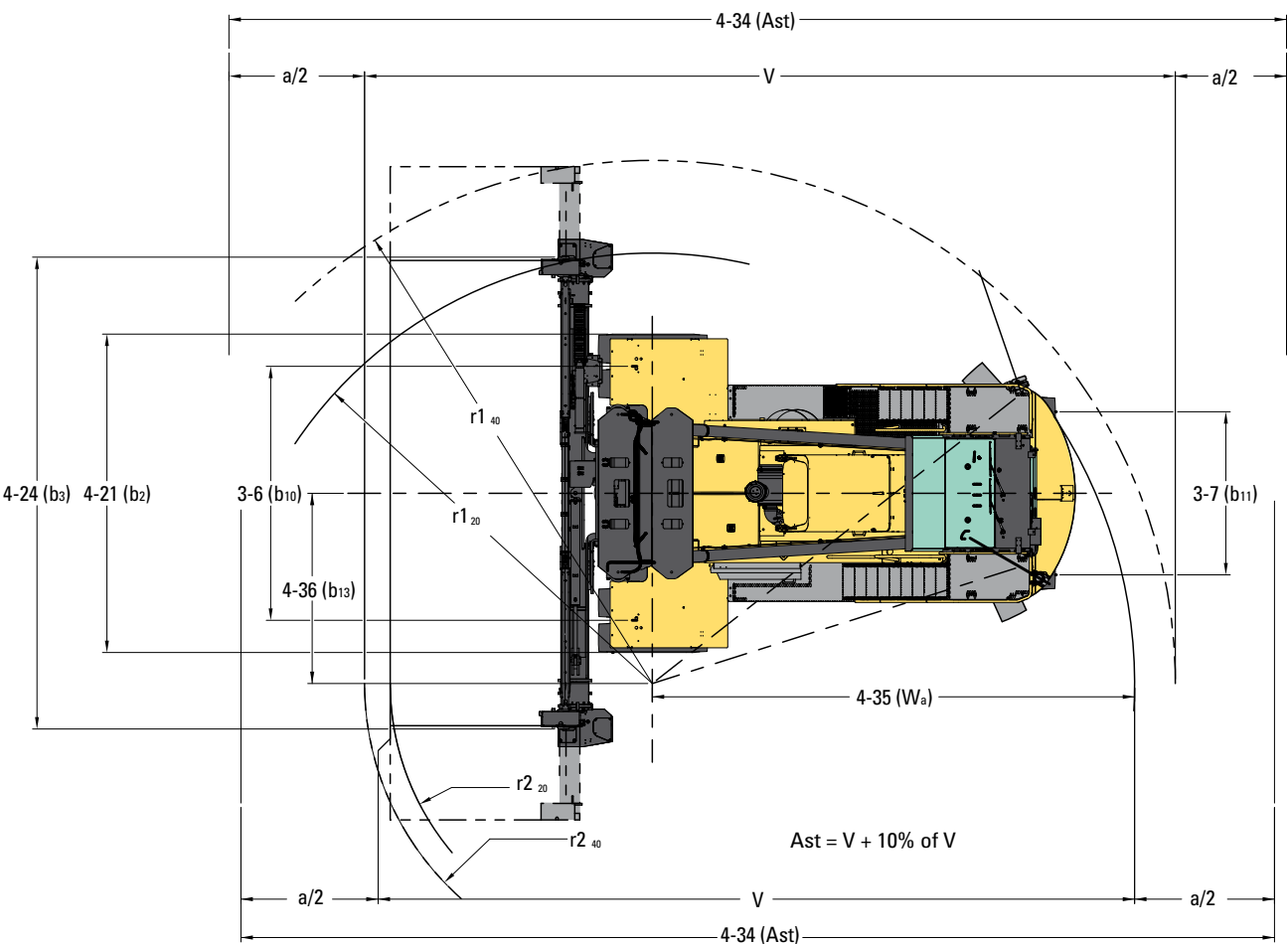
STANDARD CAB POSITION



OPTIONAL RAISED CAB POSITION



Note: For raised cab version add 1000mm for h6 and h7.



- r_1 = radius of swing of container attachment rear corner
- r_2 = radius of swing of container front corner
- W_a = outside turning radius of the truck
- a = total operating clearance, $a/2$ is operating clearance at each side
- V = (theoretical) 90° ~ stacking aisle width, no intrusive stacking width clearance
- $Ast = V + a$
- $Ast = V + 10\% \text{ of } V$

H8XD-EC6 / H8XD-EC7 / H9XD-EC7 SPECIFICATIONS

GENERAL	1-1	Manufacturer			HYSTER		
	1-2	Model designation			H8XD-EC6	H8XD-EC7	H9XD-EC7
	1-3	Drive			Diesel		
	1-4	Operator type			Seated		
	1-5	Load capacity, nominal ⁽¹⁾	Q	kg	8,000		9,000
	1-6	Load center distance	c ₁	mm	1,220		
	1-8	Load distance, centre of drive axle to front of side lift spreader	x	mm	1,357		
	1-9	Wheelbase	y	mm	4,500		
	1-10	Container stacking height, 8'6" / 9'6"		#	6 / 5	7 / 6	
WEIGHT	2-1	Service weight		kg	35,558	36,912	38,898
	2-2	Axle loading with load, front / rear		kg	35,313 / 8,194	36,794 / 8,068	38,193 / 9,655
	2-3	Axle loading without load, front / rear		kg	22,935 / 12,623	24,416 / 12,497	24,259 / 14,639
WHEELS	3-1	Tyre type			Pneumatic		
	3-2	Tyre size, front			14.00 - 24 24PR		
	3-3	Tyre size, rear			14.00 - 24 24PR		
	3-5	Number of tyres, front / rear (x driven)			x 4 / 2		
	3-6	Tread, front	b ₁₀	mm	3,282		
	3-7	Tread, rear	b ₁₁	mm	2,108		
	DIMENSIONS	4-1	Mast tilt, forward / backward	α/β	°	4 / 3	
4-2		Height, mast lowered	h ₁	mm	9,495	10,795	
4-3		Free lift	h ₂	mm	0		
4-4		Lift	h ₃	mm	13,850	16,450	
4-4-1		Lift height, minimum ⁽²⁾	h _{3.1.1}	mm	2,314		
4-4-2		Lift height, maximum ⁽²⁾	h _{3.1.2}	mm	16,164	18,764	
4-5		Height, mast extended	h ₄	mm	16,420	19,020	
4-7-1		Height of overhead guard (closed cab)	h ₆	mm	3,791		
4-7-2		Height of overhead guard (closed cab w/ airco)	h ₆	mm	3,791		
4-7-4		Height of overhead guard (closed cab w/ work lights)	h ₆	mm	3,961		
4-8		Seat height to SIP ⁽³⁾ ⁽⁴⁾	h ₇	mm	2,650		
4-19		Overall length	l ₁	mm	9,264		
4-20		Length to face of spreader	l ₂	mm	6,824		
4-21		Overall width across drive tyres	b ₂	mm	4,110		
4-23		Width across spreader, retracted/extended	b ₃	mm	6,084 / 12,218		
4-31		Ground clearance, lowest point	m ₁	mm	293		
4-32		Ground clearance, center or wheelbase	m ₂	mm	383		
4-33		Aisle width with 20' Container REDUCED / FULL stroke	Ast ₂₀	mm	10,614 / 10,144		
4-34		Aisle width with 40' Container REDUCED / FULL stroke	Ast ₄₀	mm	14,180 / 13,875		
4-35		Outside turning radius REDUCED / FULL stroke	W _a	mm	6,934 / 6,371		
4-36	Internal turning radius REDUCED / FULL stroke	b ₁₃	mm	1,619 / 763			
PERFORMANCE STAGE IIA	5-1	Travel speed, with / without load		km/h	20 / 25		
	5-2	Lifting speed, with / without load		m/s	0.51 / 0.67		
	5-2-1	Lifting speed, with 70% load		m/s	0.58		
	5-3	Lowering speed with / without load		m/s	0.55 / 0.55		
	5-5	Drawbar pull - 1.6 km/h, with / without load		kN	160 / 161		159 / 161
	5-6	Drawbar pull - max, with / without load		kN	193 / 194	192 / 194	
	5-7	Gradeability - 1.6 km/h, with / without load ⁽⁵⁾		%	40 / 39	39 / 38	36 / 36
	5-8	Gradeability - max, with / without load ⁽⁵⁾		%	49 / 39	48 / 38	45 / 36
PERFORMANCE STAGE V	5-1	Travel speed, with / without load		km/h	20 / 25		
	5-2	Lifting speed, with / without load		m/s	0.51 / 0.67		
	5-2-1	Lifting speed, with 70% load		m/s	0.58		
	5-3	Lowering speed with / without load		m/s	0.55 / 0.55		
	5-5	Drawbar pull - 1.6 km/h, with / without load		kN	160 / 161		159 / 161
	5-6	Drawbar pull - max, with / without load		kN	193 / 194	192 / 194	
	5-7	Gradeability - 1.6 km/h, with / without load ⁽⁵⁾		%	40 / 39	39 / 38	36 / 36
	5-8	Gradeability - max, with / without load ⁽⁵⁾		%	49 / 39	48 / 38	45 / 36

(1) Raised cabin may result in reduced capacity since the "carry" height will be higher.
(2) Minimum/maximum height of twistlocks
(3) With raised cabin position add 39" / 1000 mm
(4) SIP to drive axle plus radius of tires to ground using standard tires
(5) Gradeability figures are provided for comparison of tractive performance, but are not intended to endorse the operation of vehicle on the stated inclines.

H9XD-EC8 / H9XD-ECD7 / H9-ECD8 SPECIFICATIONS

GENERAL	1-1	Manufacturer			HYSTER		
	1-2	Model designation			H9XD-EC8	H9XD-ECD7	H9XD-ECD8
	1-3	Drive			Diesel		
	1-4	Operator type			Seated		
	1-5	Load capacity, nominal ⁽¹⁾	Q	kg	9,000		
	1-6	Load center distance	c ₁	mm	1,220		
	1-8	Load distance, centre of drive axle to front of side lift spreader	x	mm	1,357	1,309	
	1-9	Wheelbase	y	mm	4,500		
	1-10	Container stacking height, 8'6" / 9'6"		#	8 / 7	6 + 1 / 5 + 1	7 + 1 / 6 + 1
	WEIGHT	2-1	Service weight		kg	41,487	39,468
2-2		Axle loading with load, front / rear		kg	38,896 / 10,540	39,088 / 9,380	40,602 / 9,251
2-3		Axle loading without load, front / rear		kg	25,962 / 15,524	25,030 / 14,438	26,544 / 14,309
WHEELS	3-1	Tyre type			Pneumatic		
	3-2	Tyre size, front			14.00 - 24 24PR	14.00 - R24	
	3-3	Tyre size, rear			14.00 - 24 24PR	14.00 - R24	
	3-5	Number of tyres, front / rear (x driven)			x 4 / 2		
	3-6	Tread, front	b ₁₀	mm	3,507	3,282	
	3-7	Tread, rear	b ₁₁	mm	2,108		
	4-1	Mast tilt, forward / backward	α/β	°	4 / 3		
DIMENSIONS	4-2	Height, mast lowered	h ₁	mm	12,095	9,495	10,795
	4-3	Free lift	h ₂	mm	0		
	4-4	Lift	h ₃	mm	19,050	13,850	16,450
	4-4-1	Lift height, minimum ⁽²⁾	h _{3.1.1}	mm	2,318	2,472	
	4-4-2	Lift height, maximum ⁽²⁾	h _{3.1.2}	mm	21,364	16,322	18,922
	4-5	Height, mast extended	h ₄	mm	21,620	16,420	19,020
	4-7-1	Height of overhead guard (closed cab)	h ₆	mm	3,791		
	4-7-2	Height of overhead guard (closed cab w/ airco)	h ₆	mm	3,791		
	4-7-4	Height of overhead guard (closed cab w/ work lights)	h ₆	mm	3,961		
	4-8	Seat height to SIP ⁽³⁾ ⁽⁴⁾	h ₇	mm	2,650		
	4-19	Overall length	l ₁	mm	9,264	9,214	
	4-20	Length to face of spreader	l ₂	mm	6,824	6,776	
	4-21	Overall width across drive tyres	b ₂	mm	4,335	4,110	
	4-23	Width across spreader, retracted/extended	b ₃	mm	6,084 / 12,218	6,566 / 12,700	
	4-31	Ground clearance, lowest point	m ₁	mm	293		
	4-32	Ground clearance, center or wheelbase	m ₂	mm	383		
	4-33	Aisle width with 20' Container REDUCED / FULL stroke	Ast ₂₀	mm	10,614 / 10,144	10,566 / 10,096	
	4-34	Aisle width with 40' Container REDUCED / FULL stroke	Ast ₄₀	mm	14,180 / 13,875	14,382 / 14,081	
	4-35	Outside turning radius REDUCED / FULL stroke	W _a	mm	6,934 / 6,371		
	4-36	Internal turning radius REDUCED / FULL stroke	b ₁₃	mm	1,507 / 651	1,619 / 763	
PERFORMANCE STAGE IIA	5-1	Travel speed, with / without load		km/h	20 / 25		
	5-2	Lifting speed, with / without load		m/s	0.46 / 0.61		
	5-2-1	Lifting speed, with 70% load		m/s	0.54		
	5-3	Lowering speed with / without load		m/s	0.55 / 0.55		
	5-5	Drawbar pull - 1.6 km/h, with / without load		kN	147 / 149	148 / 149	147 / 149
	5-6	Drawbar pull - max, with / without load		kN	178 / 180		
	5-7	Gradeability - 1.6 km/h, with / without load ⁽⁵⁾		%	31 / 35	33 / 39	32 / 38
	5-8	Gradeability - max, with / without load ⁽⁵⁾		%	39 / 35	41 / 39	39 / 38
PERFORMANCE STAGE V	5-1	Travel speed, with / without load		km/h	20 / 25		
	5-2	Lifting speed, with / without load		m/s	0.46 / 0.61		
	5-2-1	Lifting speed, with 70% load		m/s	0.53		
	5-3	Lowering speed with / without load		m/s	0.55 / 0.55		
	5-5	Drawbar pull - 1.6 km/h, with / without load		kN	159 / 160		
	5-6	Drawbar pull - max, with / without load		kN	192 / 193		
	5-7	Gradeability - 1.6 km/h, with / without load ⁽⁵⁾		%	34 / 35	36 / 39	34 / 38
	5-8	Gradeability - max, with / without load ⁽⁵⁾		%	42 / 35	44 / 39	43 / 38

(1) Raised cabin may result in reduced capacity since the "carry" height will be higher.
(2) Minimum/maximum height of twistlocks
(3) With raised cabin position add 39" / 1000 mm
(4) SIP to drive axle plus radius of tires to ground using standard tires
(5) Gradeability figures are provided for comparison of tractive performance, but are not intended to endorse the operation of vehicle on the stated inclines.

H10XD-ECD8 / H11XD-ECD8 / H11-ECD9 SPECIFICATIONS

POWERTRAINS

GENERAL	1-1	Manufacturer			HYSTER		
	1-2	Model designation			H10XD-ECD8	H11XD-ECD8	H11XD-ECD9
	1-3	Drive			Diesel		
	1-4	Operator type			Seated		
	1-5	Load capacity, nominal ⁽¹⁾	Q	kg	10,000	11,000	
	1-6	Load center distance	c ₁	mm	1,220		
	1-8	Load distance, centre of drive axle to front of side lift spreader	x	mm	1,309		
	1-9	Wheelbase	y	mm	4,500		
	1-10	Container stacking height, 8'6" / 9'6"		#	7 + 1 / 6 + 1		8 + 1 / 7 + 1
WEIGHT	2-1	Service weight		kg	41,886	42,847	44,198
	2-2	Axle loading with load, front / rear		kg	42,166 / 9,719	43,730 / 10,117	45,207 / 9,990
	2-3	Axle loading without load, front / rear		kg	26,546 / 15,339	26,548 / 16,299	28,025 / 16,172
WHEELS	3-1	Tyre type			Pneumatic		
	3-2	Tyre size, front			14.00 - R24		
	3-3	Tyre size, rear			14.00 - R24		
	3-5	Number of tyres, front / rear (x driven)			x 4 / 2		
	3-6	Tread, front	b ₁₀	mm	3,507		
	3-7	Tread, rear	b ₁₁	mm	2,108		
	4-1	Mast tilt, forward / backward	α/β	°	4 / 3		
DIMENSIONS	4-2	Height, mast lowered	h ₁	mm	10,795		12,095
	4-3	Free lift	h ₂	mm	0		
	4-4	Lift	h ₃	mm	16,450		19,050
	4-4-1	Lift height, minimum ⁽²⁾	h _{3.1.1}	mm	2,472		
	4-4-2	Lift height, maximum ⁽²⁾	h _{3.1.2}	mm	18,922		21,522
	4-5	Height, mast extended	h ₄	mm	19,020		21,620
	4-7-1	Height of overhead guard (closed cab)	h ₆	mm	3,791		
	4-7-2	Height of overhead guard (closed cab w/ airco)	h ₆	mm	3,791		
	4-7-4	Height of overhead guard (closed cab w/ work lights)	h ₆	mm	3,961		
	4-8	Seat height to SIP ⁽³⁾ ⁽⁴⁾	h ₇	mm	2,650		
	4-19	Overall length	l ₁	mm	9,216		
	4-20	Length to face of spreader	l ₂	mm	6,776		
	4-21	Overall width across drive tyres	b ₂	mm	4,335		
	4-23	Width across spreader, retracted/extended	b ₃	mm	6,566 / 12,700		
	4-31	Ground clearance, lowest point	m ₁	mm	293		
	4-32	Ground clearance, center or wheelbase	m ₂	mm	383		
	4-33	Aisle width with 20' Container REDUCED / FULL stroke	Ast ₂₀	mm	10,566 / 10,096		
	4-34	Aisle width with 40' Container REDUCED / FULL stroke	Ast ₄₀	mm	14,382 / 14,081		
	4-35	Outside turning radius REDUCED / FULL stroke	W _a	mm	6,934 / 6,371		
	4-36	Internal turning radius REDUCED / FULL stroke	b ₁₃	mm	1,507 / 651		
PERFORMANCE STAGE IIIA	5-1	Travel speed, with / without load		km/h	20 / 25		
	5-2	Lifting speed, with / without load		m/s	0.46 / 0.61		
	5-2-1	Lifting speed, with 70% load		m/s	0.54		
	5-3	Lowering speed with / without load		m/s	0.55 / 0.55		
	5-5	Drawbar pull - 1.6 km/h, with / without load		kN	147 / 149		147 / 148
	5-6	Drawbar pull - max, with / without load		kN	178 / 180	177 / 179	
	5-7	Gradeability - 1.6 km/h, with / without load ⁽⁵⁾		%	30 / 37	29 / 37	28 / 36
	5-8	Gradeability - max, with / without load ⁽⁵⁾		%	37 / 37	36 / 37	35 / 36
PERFORMANCE STAGE V	5-1	Travel speed, with / without load		km/h	20 / 25		
	5-2	Lifting speed, with / without load		m/s	0.46 / 0.61		
	5-2-1	Lifting speed, with 70% load		m/s	0.53		
	5-3	Lowering speed with / without load		m/s	0.55 / 0.55		
	5-5	Drawbar pull - 1.6 km/h, with / without load		kN	158 / 160		
	5-6	Drawbar pull - max, with / without load		kN	191 / 193		
	5-7	Gradeability - 1.6 km/h, with / without load ⁽⁵⁾		%	33 / 37	31 / 37	31 / 36
	5-8	Gradeability - max, with / without load ⁽⁵⁾		%	41 / 37	39 / 37	38 / 36

(1) Raised cabin may result in reduced capacity since the "carry" height will be higher.
(2) Minimum/maximum height of twistlocks
(3) With raised cabin position add 39" / 1000 mm
(4) SIP to drive axle plus radius of tyres to ground using standard tyres
(5) Gradeability figures are provided for comparison of tractive performance, but are not intended to endorse the operation of vehicle on the stated inclines.

GENERAL	1-1	Manufacturer			Hyster	
	1-2	Model designation			H8-9XD-EC6-8 / H9-11XD-ECD7-9	
	1-3	Powertrain / drivetrain			Diesel	
ENGINE	7-1	Engine manufacturer / model			Cummins / QSB 6.7	Mercedes / OM936
	7-1a	EPA Tier Compliance			Stage IIIA	Stage V
	7-2	Engine power - rated		kW	164@2200	180@1800
	7-2-1	Engine power, maximum		kW	172	180
	7-3-1	Engine torque @ rpm (1.min)		N-m	949@1500	1,000@1200-1600
	7-4	Number of cylinders / displacement		# / cm³	6 / 6,690	6 / 7,698
	7-6	Fuel consumption according to VDI cycle		l/h	On request	
	7-8	Alternator output		Amps	120	
	7-9	Electrical system voltage		V	24	
	7-10	Battery voltage, nominal capacity		V / Ah	24 / 102	
DRIVE	8-0	Drive control / transmission		Type	Powershift Transmission	
	8-1	Type of drive unit		Type	Torque Converter	
	8-2	Transmission manufacturer / type		Type	ZF 5WG211	
	8-2-1	Transmission speeds forward / backward		#	5 / 3	
	8-3	Wheel drive / drive axle manufacturer / type		Type	AxleTech / PRC 1756W3H	
	8-11	Service brake		Type	Oil immersed (wet) disc	
	8-12	Parking brake		Type	Spring applied, dry disc on drive axle	
	MISC	10-1	Operating pressure for attachments		MPa	22.5
10-2		Oil volume for attachments		l/m	72	
10-3		Hydraulic tank capacity		l	268	300
10-4		Fuel tank capacity		l	350	
10-4-1		DEF/AdBlue Tank capacity		l	N/A	38
10-5		Steering design		Type	Hydrostatic	
10-6		Number of steering rotations		#	5.0	

SPREADER	1-2	Model designation			H8-9XD-EC6-8	H9-11XD-ECD7-9
	9-1	Spreader manufacturer / type		Type	Elme / 586TB MPS	Elme / 584LD PPS
	9-1-1	Pile slope, mechanical		mm	+/- 205	+/- 192
	9-1-2	Pile slope total, powered		°	-	+/- 6
	9-3	Size of containers		ft	ISO 20' & 40'	
	9-4	Sideshift	b8	mm	+/- 600	
	9-4-1	Telescoping time, extend / retract		sec	10 / 13	

NOTES:

Specifications are affected by the condition of the vehicle and how it is equipped, as well as the nature and condition of the operating area. Inform your dealer of the nature and condition of the intended operating area when purchasing your Hyster® truck.

All capacities are according to EN1551.
All specifications and capacities are valid for trucks equipped with a Hyster® container handling spreader for handling ISO containers.

NOTICE:

Care must be exercised when handling elevated loads. Operators must be trained and must read, understand and follow the instructions contained in the Operating Manual.



All values are nominal values and they are subject to tolerances. For further information, please contact the manufacturer. Hyster products are subject to change without notice.

Lift trucks illustrated may feature optional equipment. Values may vary with alternative configurations.

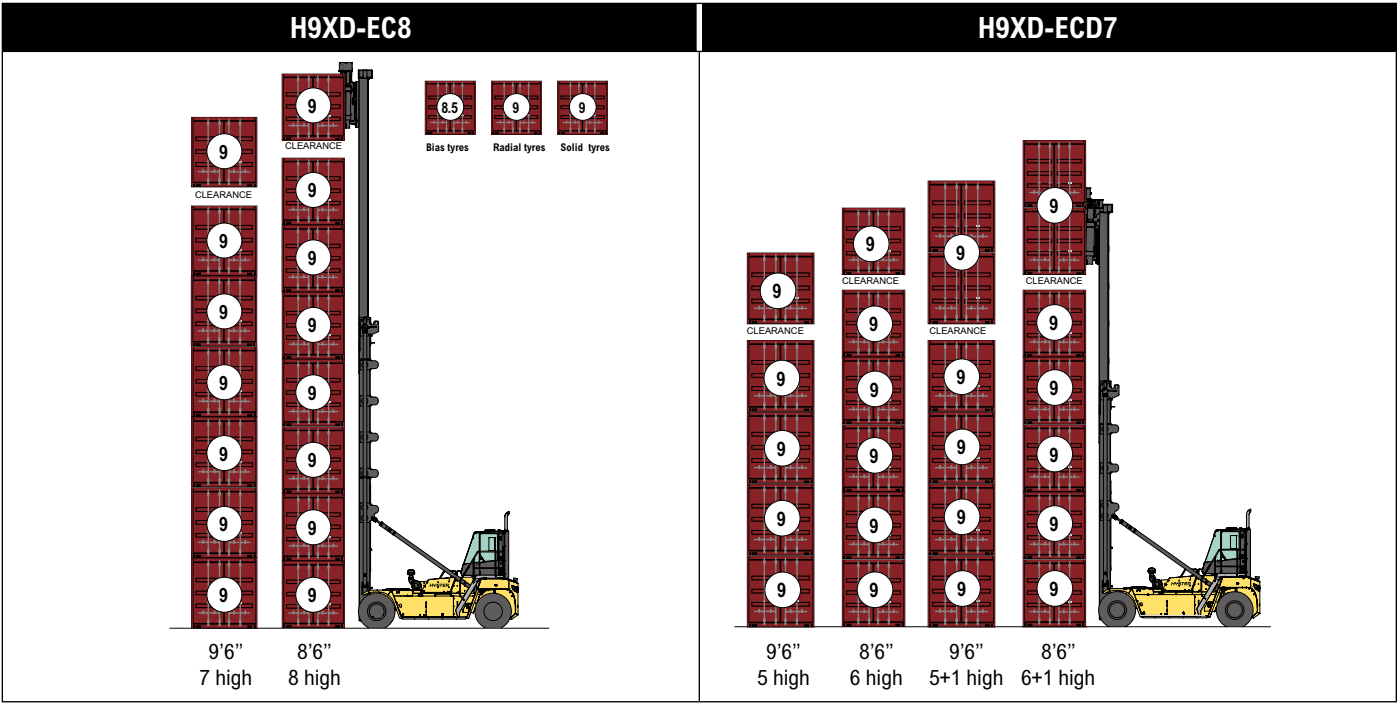
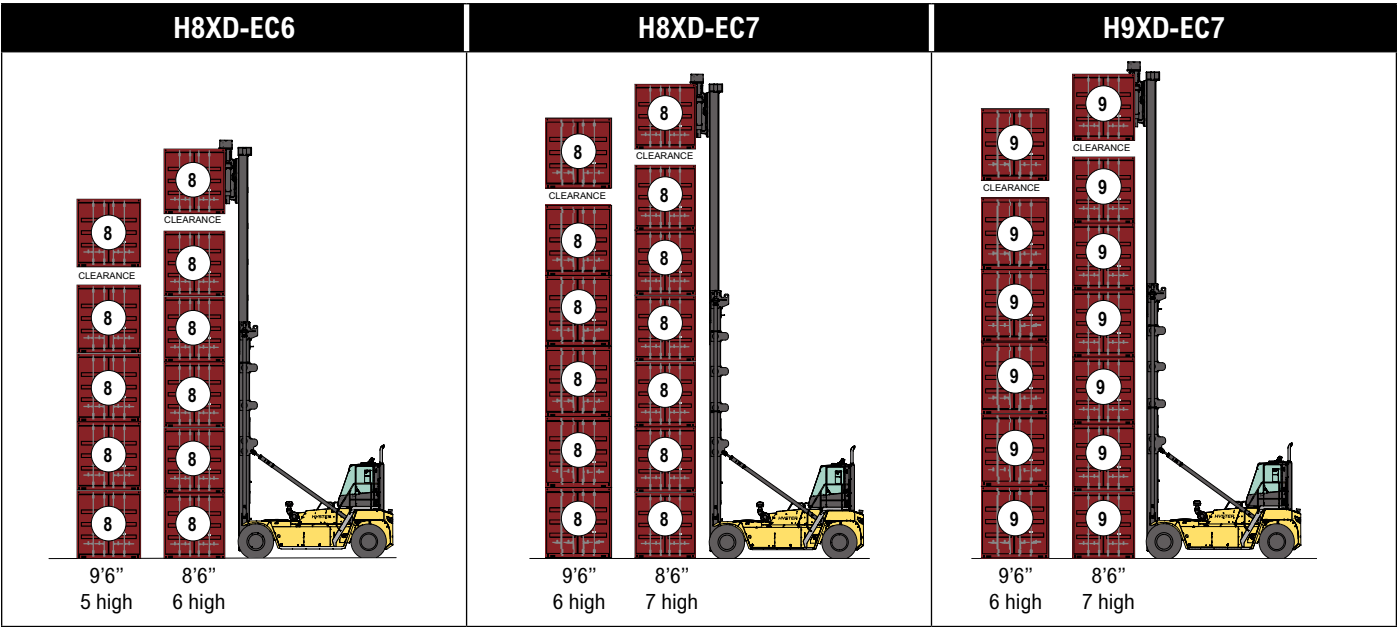
CERTIFICATION: Hyster lift trucks meet the design and construction requirements of B56.1-1969, per OSHA Section 1910.178(a)(2), and also comply with the B56.1 revision in effect at time of manufacture. Certification of compliance with the applicable ANSI standards appears on the lift truck. Performance specifications are for a truck equipped as described under Standard Equipment on this Technical Guide. Performance specifications are affected by the condition of the vehicle and how it is equipped, as well as by the nature, condition of the operating area, proper service and maintenance of the vehicle. If these specifications are critical, the proposed application should be discussed with your dealer.

NOTE: Specifications, unless otherwise listed, are for a standard truck without optional equipment.

Specification data is based on VDI 2198.

  **Safety:** This truck conforms to the current EU, UK CA and ANSI requirements.

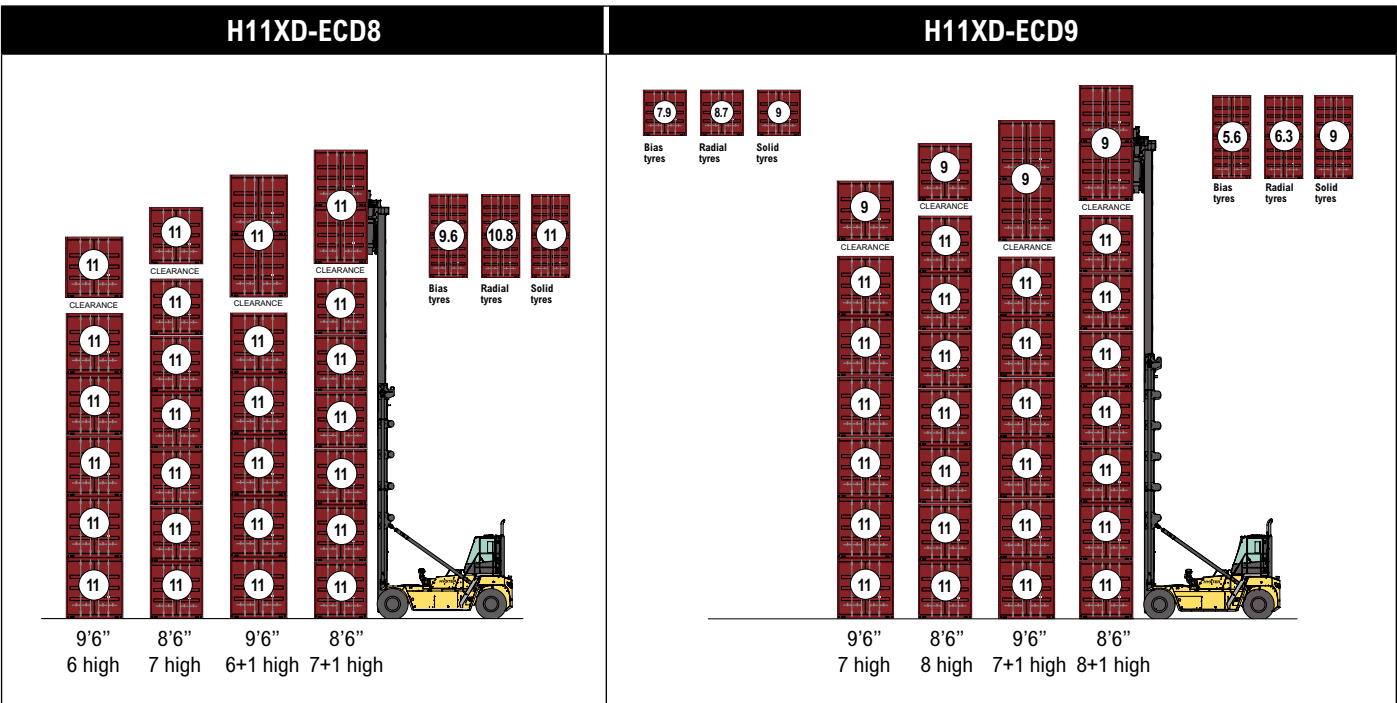
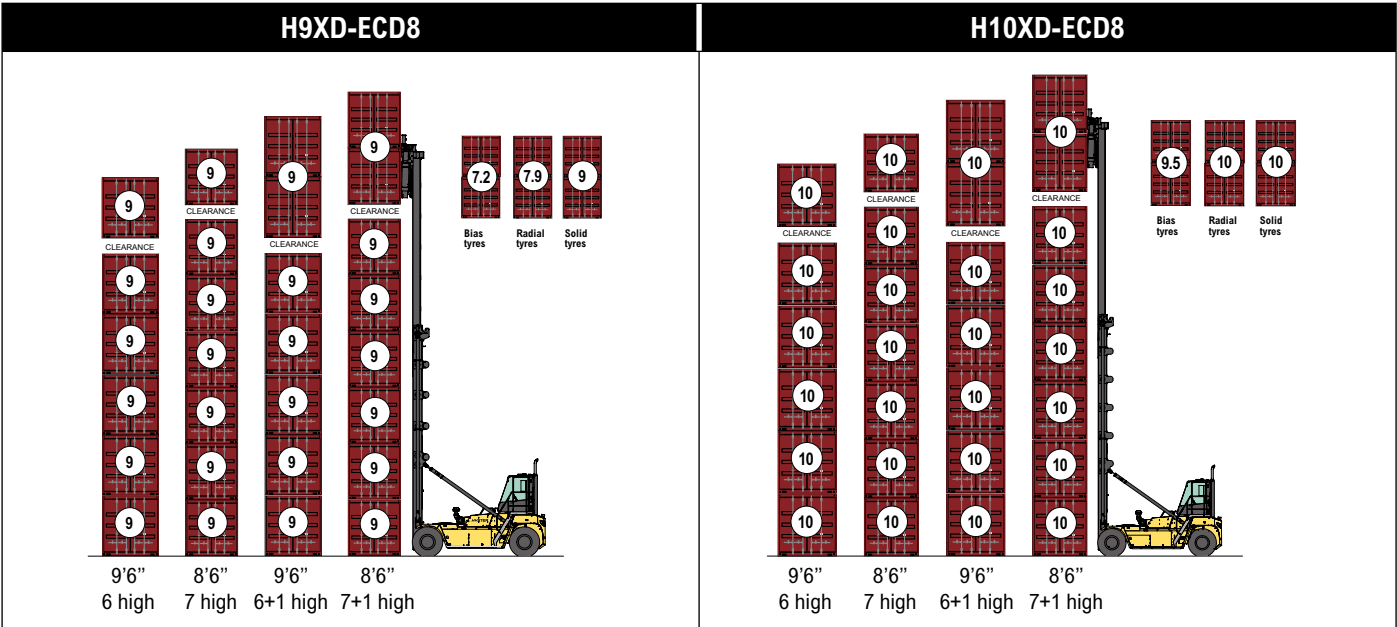
RATED CAPACITIES AND STACKING HEIGHTS



SINGLE CONTAINER SPREADER



RATED CAPACITIES AND STACKING HEIGHTS



DOUBLE CONTAINER SPREADER






OPTIONAL SPREADERS AND ENGAGEMENT SYSTEMS

SINGLE CONTAINER SPREADER 586 TB		
		Single container handling spreader Vertical Twistlocks Removable "inset" container blocks Suitable for: <ul style="list-style-type: none">20' or 40' ISO containers of 8' (2.44 m) widthWTP (Wide Twistlock Position) containers
		<ul style="list-style-type: none">Approx. 2.45-2.60 m wide "CPC" containers (Cellular Pallet-wide Containers) with non-ISO top corners castings.With speed limitation for laden/unladen.

SINGLE CONTAINER SPREADER 589 TB		
		Single container handling spreader Vertical Twistlocks Forward Reach function on the twistlocks (100-176 mm) Suitable for: <ul style="list-style-type: none">20' or 40' ISO containers of 8' (2.44 m) widthApprox. 2.45-2.50 m wide "pallet-wide" 20' or 40' containers, with ISO-like 'chamfered' corner castings.
		<ul style="list-style-type: none">Approx. 2.45-2.60 m wide "CPC" containers (Cellular Pallet-wide Containers) with non-ISO top corners castings.With speed limitation for laden/unladen.

Note: All single handler spreaders are equipped with mechanically action pile slope (MPS). Optional powered pile slope available (PPS).

DOUBLE CONTAINER SPREADER 582 LS		
		Double handle container spreader. <ul style="list-style-type: none">Picking container(s) at the front of the corner castings (enabling block stacking)
		<ul style="list-style-type: none">Top twistlock is extendable/retractableNo speed limits without containerSpeed limiter 20km/h if one or two 20-40ft containers handling (laden)

DOUBLE CONTAINER SPREADER 584 LF		
		Double handle container spreader. <ul style="list-style-type: none">Picking container(s) at the front (hooks) and side (clamps) of the corner castingsOne or two ISO and Binnen container(s) 20-40ft.One 45ft container in 40ft positionIncludes first and second container presence sensing (indicating laden or unladen status for bottom and top container separately)Includes fill-out pin and sensor to supplement hook, in order to ensure container engagementNo speed limits without containerSpeed limiter 20km/h if one or two 20-40ft containers handling (laden)With 10km/h or 6mp/h speed limit if side hooks are open (un-locked)Speed limit 20 km/h with 45 ft container with fill-out pin
		

Note: All double handler spreaders are equipped with powered pile slope (PPS)

STANDARD AND OPTIONAL EQUIPMENT

PERFORMANCE	STD	OPT
Cummins QSB 6.7L diesel engine rated 220 hp 164 kW Stage IIIA	-	-
Mercedes OM936 7.7L Stage V Diesel Engine 180 kW @ 2200 rpm	-	-
Hibernate Idle	X	
Hydraulically driven on-demand cooling fan	X	
120 amp alternator	X	
Powertrain protection system	X	
Drive axle with Oil immersed brakes	X	
ZF Transmission 5WG211 5-speeds fwd/3-speeds reverse auto-shifting	X	
AxleTech Drive Axle PRC1756 W3H with wet disc brakes	X	
DRIVE	STD	OPT
Travel Speed Limiter pre-set to 12 mph / 20 km/h	X	
Conditional Travel Speed Limiter on un-locked, pre-set to 10 km/h	X	
14.00 x 24 Michelin XZM Radial Steer and Drive		X
14.00 x 24 Trelleborg Radial Steer and Drive		X
14.00 x 24 Pneumatic Shaped Solids Steer and Drive		X
14.00 R24 Bridgestone VCHS Tubeless Radial Steer and Drive		X
14.00 R24 Michelin XZM Tubeless Radial Steer and Drive		X
14.00 x 24-24 Advance Pneumatic Steer and Drive	X	
14.00 x 24-24 Advance Tubeless Pneumatic Steer and Drive		X
Spare wheels and tyres		X
LIFT	STD	OPT
On-Demand Load Sensing Hydraulic System	X	
Automatic Throttle-up when lifting (in neutral or inching)	X	
Variable lap mast for low roller forces	X	
2 cylinder / 2 chain design	X	
2 Stage Non Free Lift mast	X	
Mast tilt - 4° Forward / 3° Back	X	
Mast Tilt Indicator - Mechanical		X
Hydraulic Accumulator	X	
Height sensor **		X
Pressure compensated lowering		X
Hydraulic system temperature protection with performance de-rate		X
HANDLING	STD	OPT
Single handling Side lift Spreader 586TB Telescopic 20-40ft with vertical Twistlocks and removable spacer block for wide container		X
Single handling Side lift Spreader 588TB Telescopic 20-40ft with vertical Twistlocks for standard wide container	EC	
Single handling Side lift Spreader 589TB Telescopic 20-40ft with vertical and moveable +/- 76 mm Twistlocks for wide container		X
Double handling Side lift Spreader 584LD Telescopic 20-40ft with Hook and Side Clamps with one Container detection	ECD	
Double handling Side lift Spreader 584LF Telescopic 20-40ft with Hook and Side Clamps and 2 Container detection and locking pin		X
Double handling Side lift Spreader 582LA Telescopic 20-40ft with double horizontal Twistlocks and Powered Pile Slope		X
Automated One-touch Spreader Extend/Retract (20'-40')		X
Mechanical Pile Slope	X	
Powered Pile Slope	ECD	EC
ERGONOMICS	STD	OPT
Enclosed Classic Cabin	X	
Standard Cab Position	X	
Standard Cab Position with automatic tip-up		X
Raised Cab Position		X
Raised Cab Position with automatic tip-up		X
Operator presence system	X	
Mechanical suspension seat	X	
Air suspension seat		X
Deluxe air suspension seat		X
Low backrest seat	X	
High backrest seat		X
Armrest on left side	X	
Cloth seat cover	X	
Vinyl seat cover		X
2-point high visibility seatbelt	X	
Lateral seat sliding mechanism		X
Interior dome light		X
"I"-pattern front wiper (Enclosed Classic operator cabin)	X	
Steel bars under armored glass top window (Enclosed Classic operator cabin)	X	
7" Integrated Performance Display	X	
Dual 7" Integrated Performance Displays		X
Joystick hydraulic control integrated in Control Arm	X	

ERGONOMICS continued	STD	OPT
Steering wheel with spinner knob	X	
Directional control lever on steering column	X	
Directional control on joystick		X
Manual park brake	X	
Park brake - automatically applied		X
DC/DC converter 24 volt/12 volt with socket		X
24-12 volt DC converter with 1 socket and 2 USB outlets		X
24-12 volt DC converter with 2 sockets and 2 USB outlets		X
Air conditioning	X	
Reading light		X
Sun shades on top and rear*	X	
Sun visors front window		X
Trainer seat		X
Cloth trainer seat with 2-point seatbelt		X
Recirculation fan		X
Additional recirculation fan		X
Radio Preparation with 2 Speakers and Antenna		X
Bluetooth Radio With 2 Speakers And Antenna		X
VISIBILITY	STD	OPT
External wide angle mirrors mounted to front fenders	X	
Exterior wide angle mirrors	X	
Interior wide angle mirrors	X	
Exterior mirrors mounted to cab		X
Rear view camera system		X
Radar object detection system		X
LED work lights	X	
LED twistlock indicator lights	X	
LED stop/tail/brake lights	X	
Turn signals, hazard & marker lights (LED)	X	
2 Additional LED spreader work lights pointed towards corner castings		X
APPEARANCE	STD	OPT
Hyster yellow paint base truck	X	
OPERATION	STD	OPT
Air horn 112 dBA	X	
Visible alarm – Amber strobe light, ignition activated	X	
Tyre pressure monitoring system**		X
Air conditioning shut-off with open door	X	
Lockable battery disconnect switch	X	
Battery jump start connector (NATO plug)		X
Key switch start with seat belt interlock on sequence for engine start and operation**		X
Key switch start with seat belt interlock for engine start and operation		X
Truck Start with key switch and start button	X	
Operator password (display) for Truck Start		X
Non-lockable fuel cap	X	
Lockable fuel cap		X
Fuel strainer in fuel filler neck		X
Hyster Tracker wireless asset management system	X	
Hyster Tracker wireless asset management - Access / Verification		X
Hyster Tracker wireless asset management - Monitoring		X
Auto greasing system for base truck		X
Auto greasing system for base truck, outer mast with centralized greasing system for inner mast		X
Centralized greasing provision for upper chain sheaves		X
Centralized greasing system for top end mast		X
24 volt electrical system	X	
Steer wheel lug nut protection		X
Front and rear mud guards		X
Stacker cone storage box (on the right hand side of the running board)		X
SUPPLEMENTAL	STD	OPT
Literature package	X	
Operator's manual	X	
CE certification***	X	
Warranty: 12 Months / 2,000 Hours Parts manufacturer's warranty	X	

* Standard with Automatic Climate Control
** Required in certain markets
*** Optional for Stage IIIA
Other options available through Special Products Engineering Department (SPED). Contact Hyster for details.




HYSTER EUROPE
Centennial House, Building 4.5, Frimley Business Park,
Frimley, Surrey, GU16 7SG, United Kingdom

Visit us online at www.hyster.com or call us at **+44 (0) 1276 538500**.

HYSTER-YALE UK LIMITED trading as Hyster Europe.

Registered Address: Centennial House, Building 4.5, Frimley Business Park, Frimley, Surrey GU16 7SG, United Kingdom.

Registered in England and Wales. Company Registration Number: 02636775.

© HYSTER-YALE UK LIMITED. 2023, all rights reserved. Hyster and  are trademarks of Hyster-Yale Group, Inc.

Hyster products are subject to change without notice. Trucks may be shown with optional equipment.

