



WWW.HYSTER.COM

EMPTY CONTAINER HANDLER PRODUCT BROCHURE

H8-11XD-EC(D) SERIES



RELIABILITY IN EMPTY CONTAINER HANDLING

The Hyster® H8-11XD-EC(D) series benefits from over 50 years of heritage in container handling and spreader design. These empty container handling machines offer fast handling, reliable proven components, and give an excellent return on your investment.

Hyster H8-11XD-EC(D) empty container handlers can handle up to 11,000kg capacity, allowing the trucks to easily pick two 40-foot reefer units at once. These trucks are designed to perform and last while handling heavy double container loads. With components designed for double handling, imagine what they can do in your single handling application.

The productivity benefits that come from Hyster single or double spreaders give you more options than ever to move additional containers in less time. Features such as powered pile slope, automatic extend-retract of the spreader, auto throttle up, and true inching support safer, accurate, and smooth positioning of containers – even up to 9-high.

PERFORMANCE IS KEY

Stage V integrated powertrain

The Stage V Mercedes 7.7L diesel engine delivers 180kW and 1000Nm of maximum torque, featuring cooled exhaust gas recirculation (EGR) technology with selective catalytic reduction (SCR) and an integrated diesel exhaust fluid (DEF) delivery system. A 2-stage diesel oxidation catalyst (DOC) is also included for particulate matter (PM) reduction.

Innovative selectable ECO performance modes, plus the 5-speed transmission and variable displacement pumps, offer excellent fuel economy and maximum productivity. Hibernate idle can also save fuel by lowering engine speed when functions are not being used.

Automatic engine shutdown saves fuel by shutting down the engine if the driver leaves the seat or the engine idles for too long, after a pre-set (adjustable) time. On-demand hydraulics keep oil temperature lower to protect hydraulic components. Plus an optional hydraulic temperature protection system is available to derate the truck when the temperature threshold is reached.

- The drive train protects itself from excessive temperatures and pressures:
 - High coolant temperatures and low levels
 - High air intake temperatures

- Low engine oil pressure
- High transmission oil temperatures and low pressure
- Variable geometry turbocharger, water cooled
- Rugged and capable ZF 5-speed 5WG 211 powershift transmission with proven field experience and reliability
- 24V electrical system with 120 amp alternator
- Automatic throttle-up on hoist and tilt enables engine to operate in most efficient rpm range

Stage IIIA

Cummins QSB 6-cylinder diesel engine delivers 172 kw peak HP and 949 Nm of maximum torque.

- ZF 5-Speed 5WG 211 powershift transmission
- Wastegate turbocharger, water cooled
- Automatic throttle-up
- On-demand hydraulic system
- 24V electrical system with 120 amp alternator

HVO fuel

Hyster Empty container handlers have the option to run on HVO100 according to EN15940. HVO (Hydrotreated Vegetable Oil) is a cleaner fuel that offers up to 90% reduction in CO2 emissions. HVO100 can serve as a transitional diesel substitute as you progress towards achieving zero emission.

THE RIGHT SPREADER FOR YOUR OPERATION

A comprehensive selection of single and double handling spreaders are available, featuring vertical twistlocks or hook & side clamps, to suit your specific application. These spreaders allow operations to handle most common types of containers including ISO, WTP, and domestic containers.

- Container sensing system supports safe handling when transporting two containers.
- Centralised greasing on the spreader reduces the number of grease points for easier maintenance.
- Smart camera systems are available for additional operator support.
- Ample sideshift allows operators to easily reposition offset loads and handle two reefers with the gen set on the same side.
- The innovative spreader design enables the operator to see the twistlocks or hooks in every load position.
- The optional auto extend-retract feature further assists operators by adjusting the spreader to a 20ft or 40ft container size at the touch of a button.



WATCH FILM

OPERATOR COMFORT

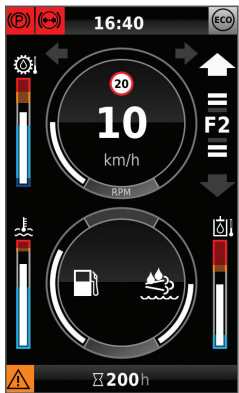
Hyster is known for tough lift trucks, but we're also recognised for ergonomically advanced lift trucks. A spacious, comfortable operator environment and an operator interface with ergonomically designed controls help elevate productivity while minimising operator fatigue.

The H8-11XD-EC(D) series operator cab provides a spacious cockpit style cabin that keeps all truck information and controls within reach.

A variety of seat configurations are offered to suit operator preference including mechanical or air suspension, cloth or vinyl cover, and lumbar support. The air conditioning system can be pre-set for automatic climate control and the high and rear louvres provide direct air flow toward the operator.

The ergonomically designed, seat-mounted control arm is fully adjustable and includes a wrist cushion and redesigned joystick to help reduce fatigue when operating the hydraulics. The intuitive joystick, integrated in the armrest, is designed for simplicity to provide easy, precise operation of the mast and spreader. The modular design of the control arm makes it possible to cover almost any possible truck configuration while being easily serviceable. The reliable CANBUS controls all main components.

The 7" full colour, touchscreen Integrated Performance Display shows all truck activity, allows for easy access to change or calibrate truck settings and is integrated with the Hyster Tracker telemetry system.



Optional secondary display available specifically for double handling.



Optional seat shown.



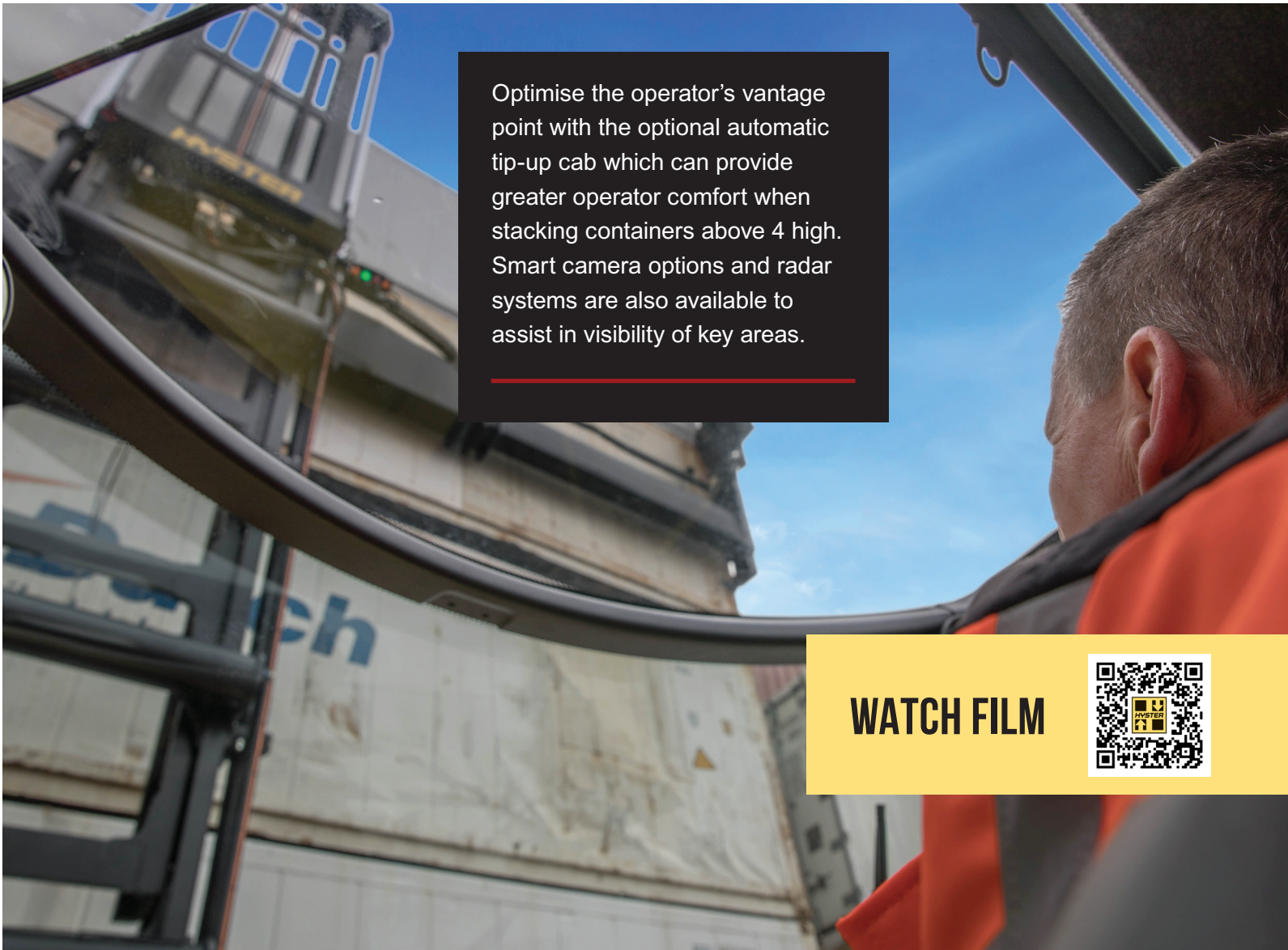
VISIBILITY

Superb visibility through the mast allows easy positioning of containers at any height for more precise and efficient load handling. An optional raised cabin allows the operator to view and inspect the top of the container when positioned on a chassis.



Classic cabin available for certain truck models in specific markets.

The cab's structural design, and tempered top glass creates optimum visibility for container stacking. Rearward visibility is outstanding with the cab location engineered to enable sweeping views over both the left and right shoulder.



Optimise the operator's vantage point with the optional automatic tip-up cab which can provide greater operator comfort when stacking containers above 4 high. Smart camera options and radar systems are also available to assist in visibility of key areas.

WATCH FILM

SIMPLIFIED SERVICEABILITY

Hyster trucks have been designed with the service technician in mind. Easy access to the engine, hydraulics and other major components are enabled with a large hinged hood and lift off front covers. The tip back cabin provides ample service access to components located under the cabin.

Daily operator checks are completed with ease given the ready access to all checked items, filter indicators, and sight glass on hydraulic oil tank. The preventative maintenance service interval is 1000 hours for the Stage V engine and 500 hours for the Stage IIIA engine. The hydraulic oil service interval can be extended to 10,000 hours using regular oil sampling. The integrated performance display offers high-level on-board diagnostics allowing for advanced and quick troubleshooting without having to connect a laptop to the truck.

Additional enhancements

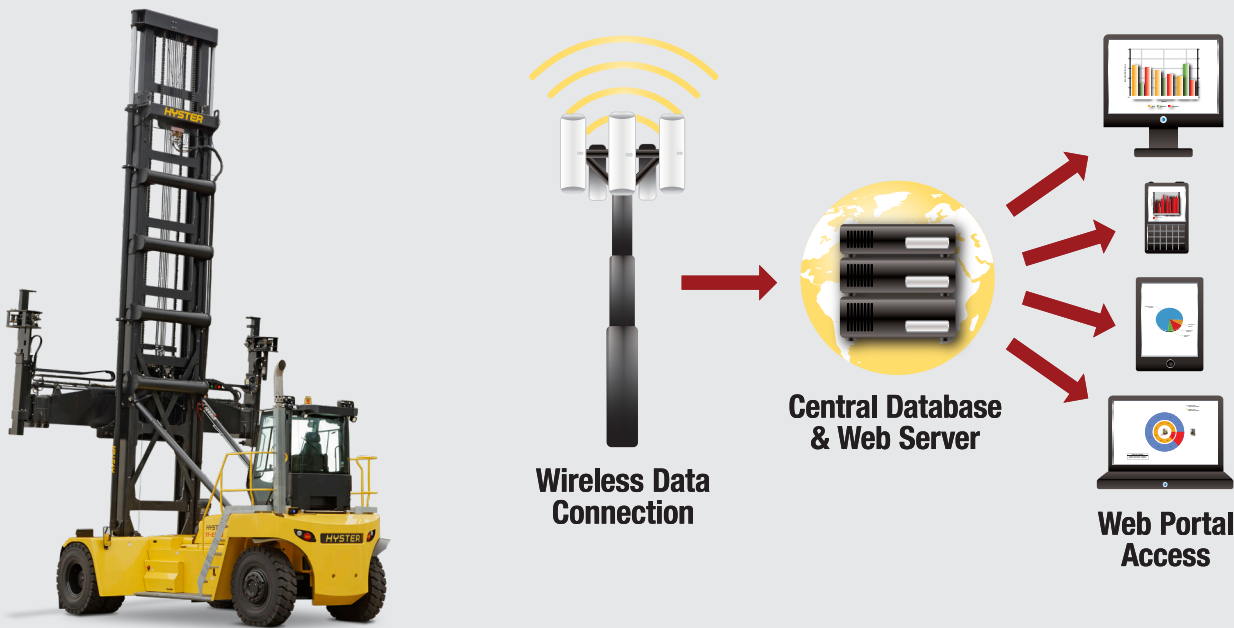
- Broad, slip resistant running boards
- Optional utility toolbox and storage compartment
- The hydraulic oil tank features a sight glass and magnetic drain plugs for ease of maintenance
- Clean hydraulic hose and electrical harness routing and clamping

Automatic greasing

An optional automatic greasing system is available. Automatic greasing will significantly lower total cost of ownership by eliminating maintenance costs of manually greasing each component. By ensuring that greasing is completed, component service life can be extended.

Hyster Tracker™: Wireless asset management

Take your fleet operation to the next level with wireless asset management from Hyster, standard on all Hyster Big Trucks. Hyster Tracker provides a scalable solution for fleets. From monitoring truck utilisation to limiting operator access, Hyster Tracker allows you to track your fleet at your fingertips.



Heavy duty productivity

Hyster H8-11XD-EC(D) container handling trucks deliver high productivity.

For optimal performance and durability, the variable lap mast features:

- Significantly lower load roller forces
- Less mast deflection
- Higher torsional rigidity
- Heavy duty 2 chain system with large diameter sheaves

This design enhances structural strength, contributing to lower costs and reducing downtime.

*Average speed calculated using: laden lift speed at full rated capacity; unladen lift speed; laden lowering speed at full rated capacity; unladen lowering speed.

TRAVEL SPEEDS

20 km/h - laden
25 km/h - unladen

LIFTING SPEEDS

0.51 m/s - laden
0.67 m/s - unladen

LOWERING SPEEDS

0.55 m/s - laden
0.55 m/s - unladen



HYSTER EUROPE


Centennial House, Frimley Business Park, Frimley, Surrey, GU16 7SG, England.
T: +44 (0) 01276 538500 | E: info@hyster.com | www.hyster.com

HYSTER EUROPE

HYSTER-YALE UK LIMITED trading as Hyster Europe.

Registered Address: Centennial House, Building 4.5, Frimley Business Park, Frimley, Surrey GU16 7SG, United Kingdom.

Registered in England and Wales. Company Registration Number: 02636775.

©2024 HYSTER YALE UK LIMITED. all rights reserved. HYSTER,  and STRONG PARTNERS. TOUGH TRUCKS. are trade marks of HYSTER-YALE Materials Handling, Inc. Hyster products are subject to change without notice.

Forklift trucks illustrated may be shown with optional equipment.

