



WWW.HYSTER.COM

**INTERNAL COMBUSTION ENGINE
PNEUMATIC TYRE TRUCKS 2 000 – 3 500 KG**

PRODUCT BROCHURE

A SERIES H2.0-3.5A



THE HYSTER® A SERIES: DISTINCTLY HYSTER, BUILT FOR YOU

Hyster have revolutionised the manufacturing process to deliver a tough truck you would expect, **but built to meet the needs of the application and operator.**

The Hyster A Series is designed using A+ Logic, with a fully integrated set of scalable and adjustable features that allows you to easily fine-tune the right solution to fit your application. We know that no two customers face identical challenges. So, instead of providing you with a truck we built, we build the truck you need. It's just logical.



Your specific business challenges are unique. However, issues such as productivity, increased costs and operator shortages are increasing. When it comes to your materials handling equipment, **choosing the right options for your individual needs can help address these issues.**

Designing your own Hyster H2.0-3.5A forklift truck, you get the comfort, cost and performance benefits that suit your operation and your operators' needs. Plus, you get a materials handling solution that suits your budget, as you are not including features that you do not require.



OPERATOR-CENTRIC DESIGN

You have to experience it to believe it. Every detail of the operator compartment has been precisely engineered to provide optimal comfort and best-in-class visibility to help your operators stay comfortable and productive all shift long.

This is one reason why Hyster® A Series lift trucks won the Ergonomics category at The Archies Awards for Excellence 2022 from the UK Materials Handling Association (UKMHA).



LOW TOTAL COST OF OWNERSHIP

With every H2.0-3.5A forklift truck, you get standard Hyster Tracker™ telemetry, industry leading fuel economy and durable components and systems resulting in reduced maintenance costs.



OPERATOR ASSISTANCE THAT BOOSTS PRODUCTIVITY

Industry-leading operator assistance features are designed to support truck awareness of both operators and pedestrians on or around the forklift truck. This can be combined with our optional Hyster Dynamic Stability System (DSS), helping you benefit from more operator confidence and greater productivity.

DESIGNED AROUND OPERATOR NEEDS

Don't let the physical demands facing forklift truck operators undermine overall productivity of the truck and operator. The H2.0-3.5A series is designed for ergonomics and convenience, making it easier for operators of every size to stay comfortable during operation. **Easy entry and exit. Every time. All day.**



THE FORKLIFT TRUCK BUILT TODAY FOR TOMORROW'S NEEDS



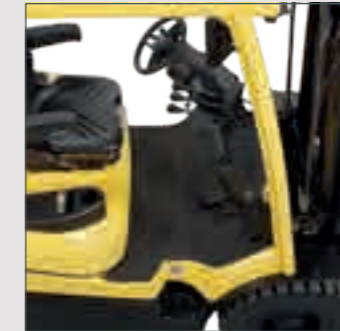
LARGER STEP SIZE

Have you ever counted how many times each day you get on and off your truck? With up to 88%* more space on the step than leading competitors, you'll have a comfortable and secure platform which may help reduce strain and twisting.



FLIP-UP ARMRESTS

Operators can optimise comfort when in the seated position, with a place to rest their arm while using manual levers, for example. The arm rest also provides a third point of contact, helping reduce strain on the operator's body during entry and exit.



LARGER FLOOR SPACE

The H2.0-3.5A operator compartment gives you up to 25%* more floor space than the leading competitors. Ample foot space enables operators to find an ideal position, stretch their legs, or move their feet to stay comfortable across long shifts.



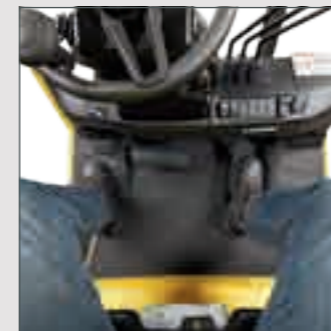
EXTRA HEADROOM

Experience a greater sense of space and comfort in the operating compartment, thanks to up to 38mm more headroom than leading competitors*. Entering and exiting the truck is simpler (especially for taller operators or those wearing hard hats) and comfort is maintained over rough terrain, where drivers could be jolted upright.



DYNAMIC SEAT ADJUSTMENT

Provides up to 25%* more forward and backward seat adjustability than leading competitors to accommodate a broader range of operator shapes and sizes.



SPACIOUS COMPARTMENT

Greater head and shoulder clearance than comparable height competitors' trucks* provides more space for freedom of movement during operation.



FOOT ACTIVATED, HAND-RELEASED PARKING BRAKE

Requires less effort than a hand-applied brake and minimises lean and strain on the operator's back.



TOUCH-SCREEN DISPLAY

A standard, full-colour touch-screen display provides quick and easy access to vital truck information, such as telemetry and optional equipment like the load weight display.

* Ergonomic data based on 2022 test data and key competitors' equivalent specification models.

DID YOU KNOW?

Increasing demands, challenging work cycles and harsh environments can reduce uptime.

If your lift trucks cannot complete a task, this can prove incredibly costly and time-consuming to your operations. You need materials handling equipment you can depend on to deliver shift after shift.

The H2.0-3.5A series protects your bottom line with features engineered to help prevent unplanned downtime, simplify service, and lower fuel costs.

Durable materials handling equipment will improve uptime, flexibility and performance tailored to your operation will help to overcome these challenges.



REDUCED MAINTENANCE



HIGH QUALITY COMPONENTS AND DESIGN

Toughness is in our Hyster DNA, thanks to almost a century of designing and manufacturing dependable lift trucks for tough applications. Durable components reduce the amount of maintenance required and time spent by service technicians undertaking checks on the truck.

LESS MAINTENANCE

With an average 14% reduction in maintenance time compared with previous models, the Hyster H2.0-3.5A models help keep your costs under control during economically challenging times, while at the same time helping you maintain productivity levels.

KEEP COSTS UNDER CONTROL WHILE MAINTAINING PERFORMANCE



DON'T BUY WHAT YOU DON'T NEED

Start with a singular base configuration, then add what you need to best suit your application or operational requirements. Only pay for what your operators and operation need in order to perform optimally.



FUEL EFFICIENCY COST SAVINGS

Whether you choose diesel or LPG, you can lower costs and reduce emissions. Compared to leading competitors, the H2.0-3.5A models have lower fuel consumption and may achieve up to 27% more fuel efficiency as standard. Get more use out of each fuel tank and save up to €7,000* per truck with the added benefit of up to 27% less CO2 emissions**. All without the need to specially engineer your truck, or change the way you work.



LIVE INSIGHT INTO YOUR OPERATION

Opt to have live access to your fleet, monitoring and diagnosing equipment remotely with the optional Hyster Tracker™, helping reduce the need for technician visits and manual inspection to determine preventive maintenance needs. Hyster Tracker™ also gives you access to real forklift costs once in operation.



LONGER ENGINE SERVICE INTERVALS

LPG models require less maintenance and less of your technician's time, helping keep costs down and maximise uptime. In fact, you could even undertake your engine servicing half as often* as you'd expect.



ON-DEMAND COOLING WITH REVERSING FAN

The optional fan reverses direction at regular intervals or at the push of a button. This helps clear out debris from the radiator, allowing the truck to stay cool while minimising the frequency with which operators need to remove debris themselves. The fan runs independently of the engine, providing the right amount of cooling for the job, whether the truck is at top speed or sitting still.

*based on a 5 years, 1500 hours a year at 50% VDI usage, Diesel at €1,66/L and LPG at 2.2/KG. CO2 is based off fuel use so follows the same % savings as fuel consumption

** According to standard test EN16796, which is set out by the VDI. This compares all values of fuel consumption that have been published by each of the following European based manufacturers: Toyota, Linde, Jungheinrich, Mitsubishi, Doosan. If the manufacturer is not in the list, then it is not stated in their tech guide.

*Compared to selected competitor models

EXCEPTIONAL VISIBILITY

The ability to clearly see your surroundings quickly is vital for operators.

Clear visibility is key to help avoid incidents and damage. Other forklift trucks, robotics, pedestrians and other vehicles are all hazards that can be avoided with a clear all round view.



ALL-ROUND VISIBILITY TO SUPPORT HIGH PERFORMANCE AND PRODUCTIVITY

OVERHEAD VISIBILITY

A high-strength laminated glass roof provides a completely unobstructed upward view while picking and placing loads at height. Standard with cabin, optional on other configurations.



FORWARD VISIBILITY

With the widest mast view* compared to the leading competitor's, the A series new mast design enhances fork tip visibility when handling loads and awareness of the environment when travelling.

REAR VISIBILITY

Cab options come with a heated rear window as standard, to maximise visibility in any type of weather conditions. What's more, for diesel models, the exhaust is positioned on the left-hand side helping operators to enjoy greater rear visibility while looking over their right shoulder and driving in reverse.



FORK VISIBILITY

A fork laser level line can help increase visibility and productivity. Hyster is now offering this feature as an option to assist in high lift or low light applications. The fork laser level line helps the operator to quickly and easily see where the fork tips will enter a load, reducing product and facility damage.



Truck is shown with optional equipment.

*Based on 2022 test data against equivalent models of leading competitors.



OPTIONAL OPERATOR ASSISTANCE SYSTEMS

Choose from a selection of application-specific features designed to support the behaviour and awareness of both operators and pedestrians.

DYNAMIC STABILITY SYSTEM (DSS)

Safety is critical in the materials handling industry. That's why we have an option to include the Hyster® Dynamic Stability System (DSS) into your A Series truck to meet your application-specific needs. The optional maintenance-free DSS solution helps to reduce the likelihood of tip overs and reminds operators of safe operating practices by monitoring operating conditions and automatically limiting truck functionality when potentially unsafe conditions are detected.

- **High Lift Traction Control** - Limits truck speed when the carriage is raised above the height threshold. Operator's will receive a visual indicator on the truck display and an audible alert. *
- **High Lift Tilt Control** - Limits tilt speed and forward tilt angle when handling an elevated load above the height threshold. Operator's will receive a visual indicator on the truck display and an audible alert. **
- **Corner Control** - Dynamically limits speed when driving around corners, based on how tightly the truck is turning. Truck speed is not limited by using the brakes, but by cutting throttle, which produces a smooth deceleration. Operator's will receive a visual indicator on the truck display and an audible alert. **

DSS works in collaboration with the standard Lateral Stability System, which reduces truck leans in turns, helping to improve lateral stability. The innovative steer axle design allows for superior travel over uneven surfaces. The system is 100% maintenance free, with no controller, sensors, or wiring. *

OTHER OPTIONAL ASSISTANCE FEATURES

A range of other optional Hyster operator assistance features provide alerts and in the following conditions to help reinforce proper operating practices and maintain productivity. Here are just a couple of them. Talk to your local Hyster dealer to discover more add-on solutions that could help your particular application.


- **Rear-Facing Camera** - Along with the corresponding LCD display, this solution helps in monitoring the rear area of the truck while manoeuvring or changing directions.
- **Shelf Height Selector** is an option that allows the operator to select a pre-set lift height. With one touch of the hydraulic controls, the truck automatically stops lifting at the pre-set height, ideal for applications with high lift heights and frequent loading into racks.
- **Spotlights and Pedestrian Awareness Lights** - A highly configurable suite of light options, mounting positions, colours, and control methods deliver a best-fit solution to help support application-specific visibility and awareness needs in low light or congested areas.
- **Slim, LED, mast mounted work lights** - These can be added for applications requiring additional lighting than provided by work lights alone.
- **LPG tank bracket interlock** - If equipped with a swing-out or swing-out drop down tank bracket, an LPG tank bracket interlock feature will alert the operator if the tank bracket is not fully closed and will not allow operation. This helps to reduce the risk of damage to the forklift truck and surrounding equipment and infrastructure.

*Properly trained operators of high-lift counterbalance lift trucks should always travel (with or without load) with the carriage lowered. Operators should exercise caution when tilting loads at height, and during acceleration (forward or backward) when removing or depositing loads positioned high on racks. **DSS events are also captured via telemetry



HYSTER EUROPE
Centennial House, Building 4.5, Frimley Business Park,
Frimley, Surrey, GU16 7SG, United Kingdom

Visit us online at www.hyster.com or call us at **+44 (0) 1276 538500**.

HYSTER-YALE UK LIMITED trading as Hyster Europe.
Registered Address: Centennial House, Building 4.5, Frimley Business Park, Frimley, Surrey GU16 7SG, United Kingdom.
Registered in England and Wales. Company Registration Number: 02636775.
© HYSTER-YALE UK LIMITED. 2023, all rights reserved. Hyster and  are trademarks of Hyster-Yale Group, Inc.
Hyster products are subject to change without notice. Trucks may be shown with optional equipment.



Safety: this truck conforms to the current EU and UK CA requirements.