

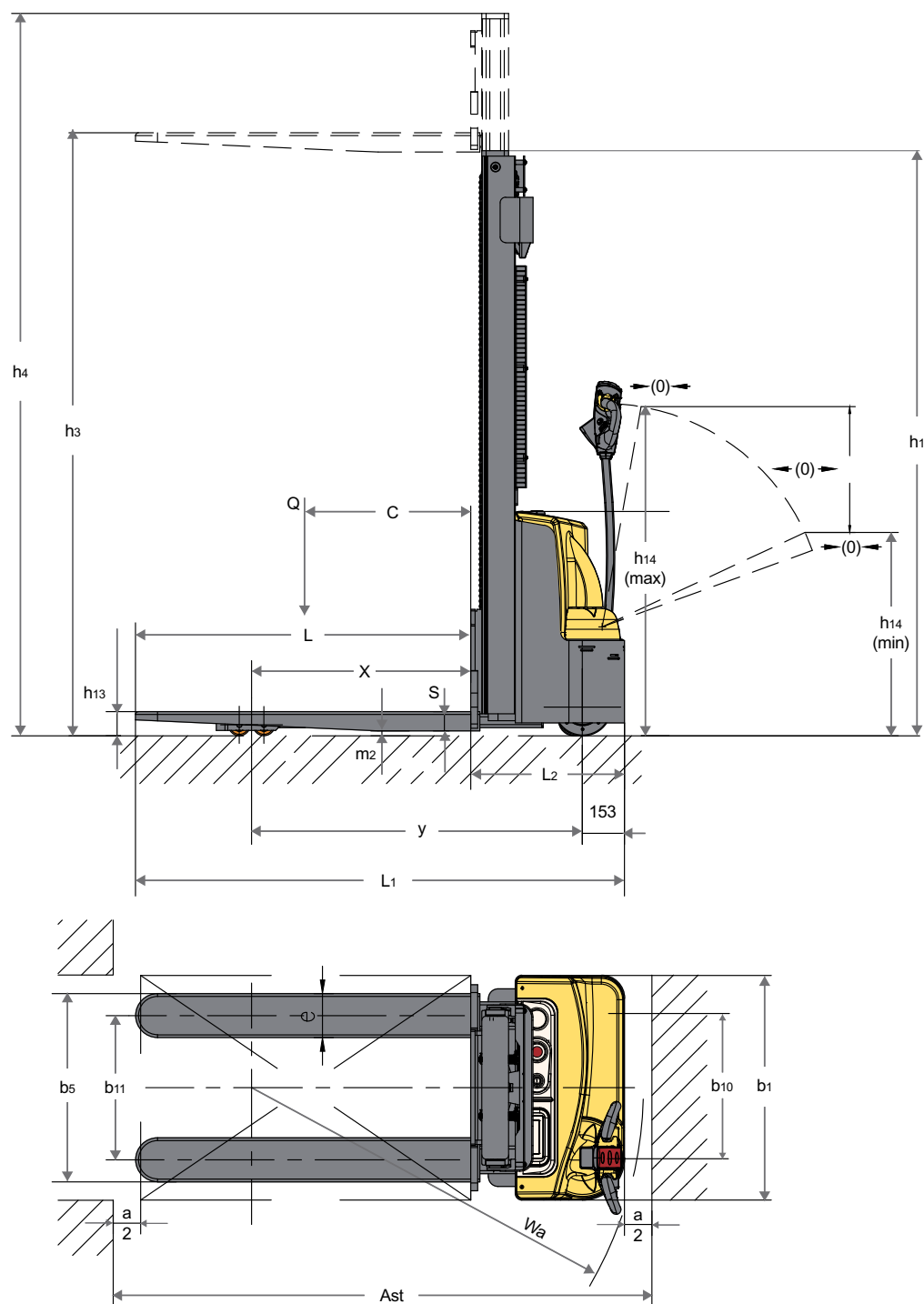
SC1.2 SERIES



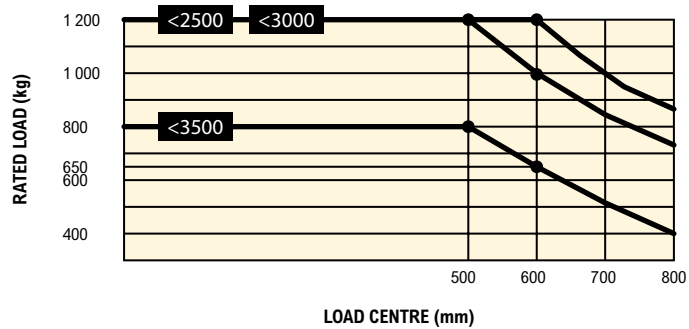
COMPACT PEDESTRIAN HIGH LIFT STACKER PRODUCT TECHNICAL GUIDE



TRUCK DIMENSIONS



Mast Type	Height, Mast Lowered	Lift Height	Extended Mast height
	h ₁ mm	h ₃ mm	h ₄ mm
2 Stage NFL	1730	2500	2935
	1980	3000	3435
	2230	3500	3935



SC1.2 SERIES SPECIFICATIONS

GENERAL	1-1	Manufacturer			Hyster		
	1-2	Model			SC1.2		
	1-3	Drive			Electric		
	1-4	Operator type			Pedestrian		
	1-5	Load capacity/rated load	Q	kg	1200		
	1-6	Load centre distance	c	mm	600		
	1-8	Load distance, centre of drive axle to fork	x	mm	800		
	1-9	Wheelbase	y	mm	1210		
WEIGHT	2-1	Service weight (without battery) (560/680)		kg	540.4 / 513.4	567.4 / 534.4	586.4 / 557.4
	2-1-1	Service weight (with 60Ah Li-battery) (560/680)		kg	554.4 / 527.4	581.4 / 548.4	600.4 / 571.4
	2-2	Axle loading, laden front/rear (2.5m) (560 fork & 60Ah Li-battery)		kg	526.4 / 1228		
	2-3	Axle loading, unladen front/rear (2.5m) (560 fork & 60Ah Li-battery)		kg	416 / 138.4		
	3-1	Wheels			Polyurethane		
WHEELS	3-2	Wheel size, front	Ø x width	mm	210 x 70		
	3-3	Wheel size, rear	Ø x width	mm	80 x 70		
	3-4	Additional wheels (dimensions)	Ø x width	mm	115 x 55		
	3-5	Wheels, number front/rear (x = driven wheels)			1 x + 1 / 4		
	3-6	Tread, front	b10	mm	550		
	3-7	Tread, rear	b11	mm	390 (560 fork width) / 525 (680 fork width)		
	4-2	Lowered mast height	h1	mm	1730	1980	2230
DIMENSIONS	4-4	Lift height	h3	mm	2500	3000	3500
	4-5	Extended mast height	h4	mm	2935	3435	3935
	4-9	Height of tiller in driving position, min./max.	h14	mm	910 / 1270		
	4-15	Height, lowered	h13	mm	85±2		
	4-19	Overall length	l1	mm	1730 (1150 fork length) / 1800 (1220 fork length)		
	4-20	Length to face of forks	l2	mm	580		
	4-21-1	Overall width across chassis	b1	mm	820		
	4-22	Fork dimensions	s/e/l	mm	70 x 160 x 1150 (1220)		
	4-25	Width over forks	b5	mm	560 / 680		
	4-32	Ground clearance, centre of wheelbase	m²	mm	30		
	4-34-1	Aisle width for pallets 1000 x 1200 crossways	Ast	mm	2268		
	4-34-2	Aisle width for pallets 800 x 1200 lengthways	Ast	mm	2194		
	4-35	Turning radius	Wa	mm	1425		
PERFORMANCE	5-1	Travel speed, with/without load		km/h	4 / 4.5		
	5-2	Lift speed laden / unladen		mm/s	102 / 190		
	5-3	Lowering speed laden / unladen		mm/s	30-135 / 20-200		
	5-8	Max. gradeability, with/without load		%	5 / 10		
	5-10	Service brake			Electromagnetic		
ELECTRIC ENGINE	6-1	Drive motor rating S2 60 min		kW	0.75		
	6-2	Lift motor rating at S3 15%		kW	2.5		
	6-4	Battery voltage/nominal capacity K5		V/Ah	24V / 60Ah Li-battery x 1		
	6-5	Battery weight +/- 5%		kg	14 (60Ah Li-battery)		
	6-6	Energy consumption according to EN 16796		kWh	0.42		
	8-1	Type of drive control			DC speed control		
	8-4	Sound level at the driver's ear according to EN 12053		dB(A)	<75		

NOTES:

Specifications are affected by the condition of the vehicle and how it is equipped, as well as the nature and condition of the operating area. Inform your dealer of the nature and condition of the intended operating area when purchasing your Hyster® truck.



Safety: This truck conforms to the current EU requirements.

NOTICE:

Care must be exercised when handling elevated loads. Operators must be trained and must read, understand and follow the instructions contained in the Operating Manual.

All values are nominal values and they are subject to tolerances. For further information, please contact the manufacturer.

Hyster products are subject to change without notice.


Lift trucks illustrated may feature optional equipment. Values may vary with alternative configurations.



HYSTER PACIFIC
1/23 Rowood Road, Prospect NSF 2145
Tel: +61 (2) 9795 3800 Fax: +61 (2) 9792 8484

HYSTER ASIA
16 Tuas Avenue 20, Singapore 638827
Tel: +65 6863 3387 Fax: +65 6863 3349

Visit us online at www.hyster.com.

© Hyster Asia Pacific 2025. All rights reserved. HYSTER, , and Strong Partners. Tough Trucks. are trademarks of Hyster-Yale Materials Handling, Inc.

Specifications and details in this brochure are subject to change without prior notification. Please consult with your Hyster dealer for the most up to date information and to confirm exact capacities.