



**STRONG PARTNERS.  
TOUGH TRUCKS.™**

# **P40UT**

## **ELECTRIC WALKIE PALLET TRUCK**

**[WWW.HYSTER.COM](http://WWW.HYSTER.COM)**

## > P40UT OVERVIEW

The Hyster® electric walkie pallet truck P40UT combines ergonomic features and reliable performance with energy efficient technology. The low-maintenance helps increase productivity and reduce operational costs.

### Productivity

- Advanced AC control system eliminates the motor brushes, which limits maintenance requirements
- Low skirting on main chassis
- Side battery roll-out system is very convenient to replace batteries
- Built-in pressure relief valve protects the trucks from overloading
- Emergency power disconnect switch
- Long handle reduces steering effort
- Emergency reversing system in handle
- Low speed switch in the handle
- Variable speed control
- Cold store configuration (option)

### Optimum Structural Design

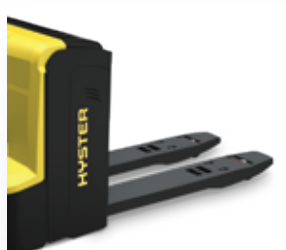
- Spring-loaded casters improve lateral stability on uneven floors and enhance truck performance and service life
- Formed heavy gauge steel provides maximum fork strength and longevity
- Pull rod design protects against bending
- Durable plastic covers

### Serviceability

- CANbus technology reduces wiring complexity
- Low battery protection setting extends the battery life
- All pivot points have grease fittings and serviceable bushing, reducing component wear



*Handle (Standard)  
(Left & Right Handed)*



*Entry roller for  
easy operation*

## P40UT POWER PLUG TYPE



**A**  
**Power Plug**



**F**  
**Power Plug**

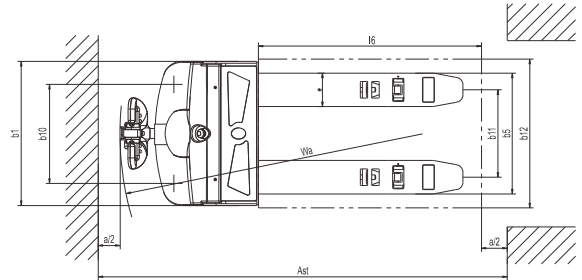
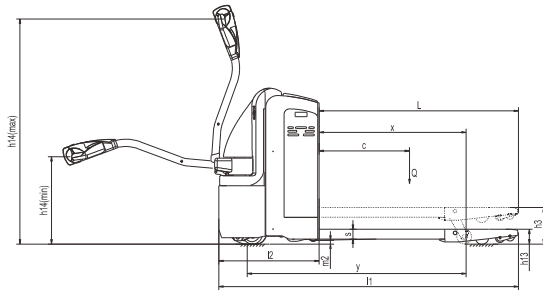


**G**  
**Power Plug**



**I**  
**Power Plug**






MODEL		P40UT
Load capacity/rated load	Q (kg)	2000
Load center distance	c (mm)	600
Load distance, center of drive axle to fork	x (mm)	815/865/935
Fork height, lowered	h13 (mm)	82
Tire size, front	mm	250x70
Tire size, rear	mm	82x126 (98)
Additional wheels (dimensions)	mm	127x57
Wheels, number front rear (x=driven wheels)		1X+2/2 (4)
Max. Lift height	h3 (mm)	202
Height of tiller in drive position min./max.	h14 (mm)	780/1230
Overall length	l1 (mm)	1655/1705/1775
Length to face of forks	l2 (mm)	555
Overall width	b1 (mm)	775
Fork dimensions	s/e/l (mm)	54x180x1100/1150/1220
Width overall forks	b5 (mm)	520/550/650/685
Aisle width for pallets 1000x1200 crossways	Ast (mm)	2015/2065/2135
Aisle width for pallets 800x1200 lengthways	Ast (mm)	2115/2115/2135
Turning radius	Wa (mm)	1400/1450/1520
Travel speed, laden/unladen	Km/h	5.5/5.6
Battery voltage, nominal capacity K5	V/Ah	24/210
Battery weight	Kg	196
Battery box dimensions	mm	750x170x534
Service weight (with battery)	Kg	640-645



Hyster Company  
P.O. Box 7006  
Greenville, North Carolina  
27835-7006  
Part No. P40UT/BTG  
1/2020 Litho in U.S.A.

Visit us online at [www.hyster.com](http://www.hyster.com) or call us at **1-800-HYSTER-1**.

Hyster,  and STRONG PARTNERS, TOUGH TRUCKS, are registered trademarks in the United States and certain other jurisdictions. Hyster products are subject to change without notice.

Trucks may be shown with optional equipment. © 2020 Hyster Company. All rights reserved.