



## IMPROVING STEEL DISTRIBUTION EFFICIENCY

**S**teel mills have traditionally relied on using multiple types of material handling equipment to move large, heavy steel coils and slabs from production to rail cars, staging areas or storage.

Reach stackers are changing that paradigm.

The application flexibility, heavy duty features and greater payload of reach stackers allow mills to consolidate their steel handling workflows, using just a single piece of equipment for a more efficient, less labor-intensive process. The secret? Attachments.



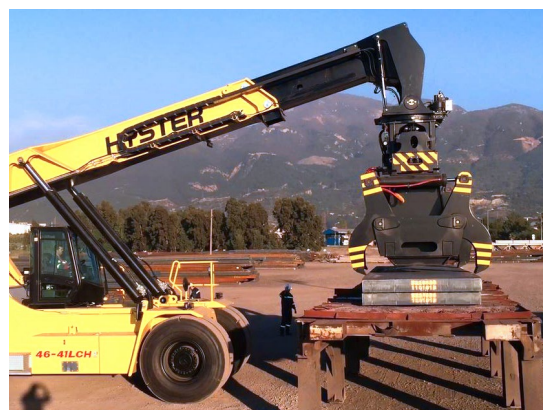
// **COIL HOOKS** allow operators great flexibility positioning coils on flat rail cars



// **COIL GRABS** release coils in minimal space, effectively loading walled gondola cars



// **SLAB MAGNETS** are well-suited for stacking ambient temperature slabs in storage or loading rail cars with side walls



// **SLAB TONGS** grab and transport hot slabs around the yard or precisely load them onto flat rail cars without walls

Learn more about innovative material handling solutions in the full e-book, [“Improving Steel Distribution Efficiency”](#) on [Hyster.com](#).