

# REDUCING OPERATOR RISK IN EVERY ENVIRONMENT

Work in the most intense industries on earth is not for the faint of heart. From odors and fumes to repetitive movements, heavy vibration and loud noise, businesses have their work cut out for them supporting workers in tough conditions. Even the most successful companies struggle to bring in and hang on to qualified talent when the job puts such a strain on forklift operators.

## HYBRID ENVIRONMENTS

Having the right systems and solutions in place can help alleviate the brunt of these day-to-day physical challenges, reduce risk of injuries or accidents, and keep operations moving. This infographic looks at the possibilities operations can consider for the setup of their operating space and their equipment, for teams that move between both indoor and outdoor workspaces.

## NOT HOW YOUR TEAM WORKS?

See considerations for other environments:

OUTDOORS ONLY

INDOORS ONLY

**HYSTER**



HYBRID WORK ENVIRONMENTS

Moving from indoors to outdoors and back again offers its own sets of challenges for operators. From the facilities and storage yards of building materials distributors, manufacturers and third-party logistics (3PL) companies to the docks and terminals of less-than-truckload (LTL) carriers, the right solutions prepare teams to reduce risk, increase comfort and enhance productivity.

CHALLENGES

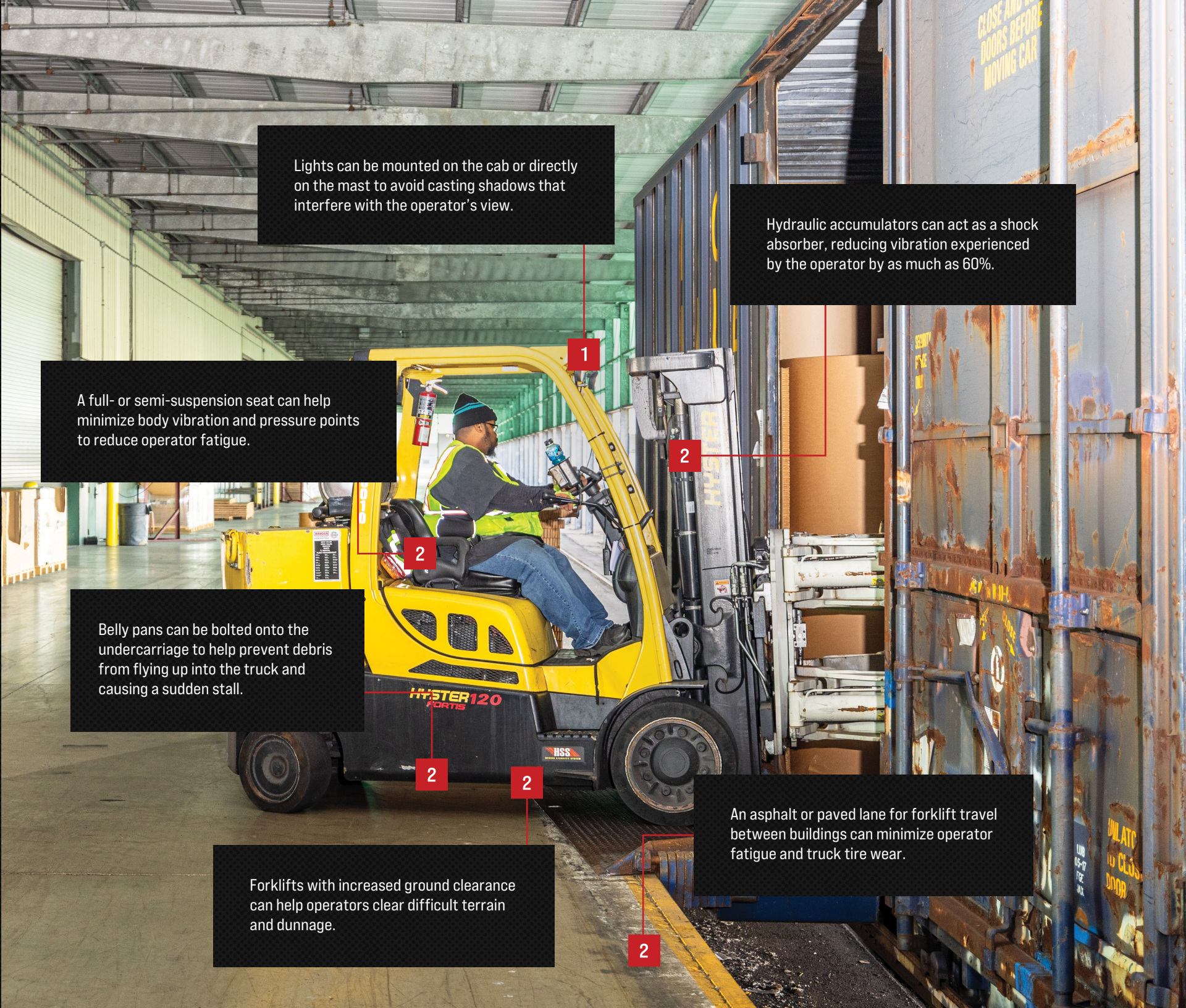
- 1

**HARSH LIGHTING TRANSITIONS**

Switching from one level of light to another, like bright outdoors to dimmer indoor spaces, can cause visibility issues that raise the risk of mistakes or slowdowns.
- 2

**VARIED GROUND, THRESHOLDS AND DEBRIS**

Moving from pavement to gravel to flat flooring — and over ramps, thresholds like steel plates or scattered debris — can make for a jarring ride for operators, risking discomfort and damage to their joints and back.



Lights can be mounted on the cab or directly on the mast to avoid casting shadows that interfere with the operator's view.

Hydraulic accumulators can act as a shock absorber, reducing vibration experienced by the operator by as much as 60%.

A full- or semi-suspension seat can help minimize body vibration and pressure points to reduce operator fatigue.

Belly pans can be bolted onto the undercarriage to help prevent debris from flying up into the truck and causing a sudden stall.

Forklifts with increased ground clearance can help operators clear difficult terrain and dunnage.

An asphalt or paved lane for forklift travel between buildings can minimize operator fatigue and truck tire wear.



CHALLENGES

3 UNPREDICTABLE ENVIRONMENTAL ELEMENTS

Whether it's open bay doors or your operators are making trips between the indoors and outdoors all day, different environmental factors like tractor-trailer diesel fumes, temperature shifts, wind and moisture can take a toll on operators and equipment.

4 UNUSUAL LOADS

In many facilities, particularly in the manufacturing and 3PL industries, loads can come in a variety of shapes, sizes and weights.

5 SLIP AND TRIP RISKS

Frequent dismounts to switch between forklifts with different capacities or attachments can increase the risk of slips and trips.



3 An overhead guard cover, either shaded or UV-protected, provides coverage from the sun.

3 Enclosed cabs can keep sun, rain and snow off operators while also enabling temperature control and helping to block out harsh smells.

3 Windshield wipers can help clear away rain and debris for greater operator visibility.

5 A large grab handle helps operators feel grounded with three points of contact while moving on and off the truck.

4 Specialized forklift attachments like side-shifting fork positioners can help reduce effort and increase operator confidence handling a wide range of pallets and loads.

5 A wider step on the truck can give the operator more leeway to find their footing for a greater sense of stability when getting on and off.



CHALLENGES

6 FALL RISKS

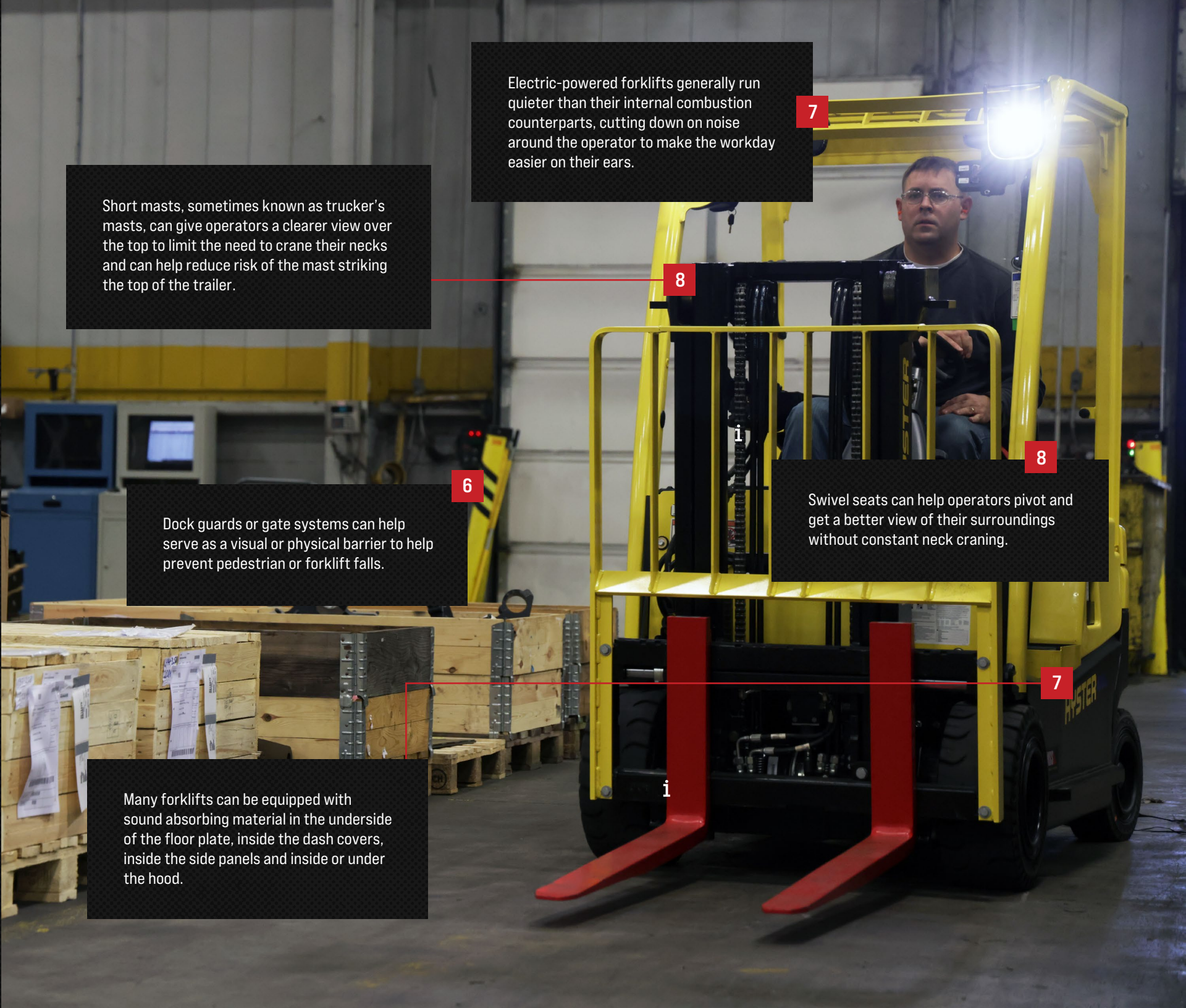
Open bay doors, moving semi-trailers and crowded dock spaces can raise the risk of falls from height.

7 NOISE

Operators are already busy managing heavy equipment and staying alert in fast-paced settings like terminal docks, sudden changes in noise — like from a loud facility to a quiet yard — can be jarring, even to the point of disrupting their focus.

8 TIGHT, LOW-CLEARANCE SPACES

Close quarters inside the back of tractor-trailers and on the docks can make it difficult for operators to maneuver equipment, get clear sightlines and handle loads efficiently without bumping into freight, the trailer or other forklifts.



Short masts, sometimes known as trucker’s masts, can give operators a clearer view over the top to limit the need to crane their necks and can help reduce risk of the mast striking the top of the trailer.

Electric-powered forklifts generally run quieter than their internal combustion counterparts, cutting down on noise around the operator to make the workday easier on their ears.

Dock guards or gate systems can help serve as a visual or physical barrier to help prevent pedestrian or forklift falls.

Swivel seats can help operators pivot and get a better view of their surroundings without constant neck craning.

Many forklifts can be equipped with sound absorbing material in the underside of the floor plate, inside the dash covers, inside the side panels and inside or under the hood.




# TOUGH ENVIRONMENTS CALL FOR **STRONG SUPPORT**

To learn more, contact your local Hyster dealer or visit [Hyster.com](https://www.hyster.com).

Or to explore considerations for other settings, choose the option that describes your operation:

**OUTDOORS ONLY**

**INDOORS ONLY**

© 2025 Hyster-Yale Materials Handling, Inc., all rights reserved. HYSTER and  are trademarks of Hyster-Yale Materials Handling, Inc. Hyster products are subject to change without notice. Trucks may be shown with optional equipment and/or features not available in all regions.

**HYSTER**