

CLEAN POWER, PROVEN TOUGHNESS



HYSTER® A SERIES INDOOR/OUTDOOR
ELECTRIC FORKLIFT



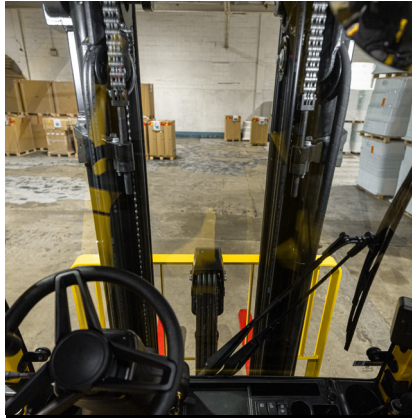
CHARGE UP YOUR INDOOR AND OUTDOOR HANDLING TASKS

Introducing the robust and customizable Hyster J45-70A electric counterbalance forklift. Energy efficient, with a choice of batteries, you can combine clean power with the comfort, performance, and dependability needed in intensive and industrial operations.



FLEXIBLE BATTERY POWER

A choice of lead-acid, lithium-ion, and TPPL [Thin Plate Pure Lead] options available.



EXCEPTIONAL VISIBILITY

Confident and spacious operation with zero turn radius. Clear visibility with wide-view mast supports productivity.



PROTECTION FOR ARDUOUS CONDITIONS

Take on the elements with enhanced environmental protection. With an IP67 rating for protection against dust and water damage.



OPERATOR ASSIST & ERGONOMICS

Boost operational productivity with an ergonomic and comfortable working environment. Options include Operator Assistance Systems (OAS) and the Dynamic Stability System (DSS) to help reinforce safe operating practices.




ENERGY EFFICIENCY

Optional enhanced permanent magnet motor package. Manage charging, extend runtime, and use batteries efficiently.



Hyster Company
P.O. Box 7006, Greenville, North Carolina 27835-7006

© 2025 Hyster-Yale Materials Handling, Inc., all rights reserved. Hyster and  are trademarks of Hyster-Yale Materials Handling, Inc. Hyster products are subject to change with notice. Trucks may be shown with optional equipment and/or features not available in all regions