

# H330XD48-400XD SERIES

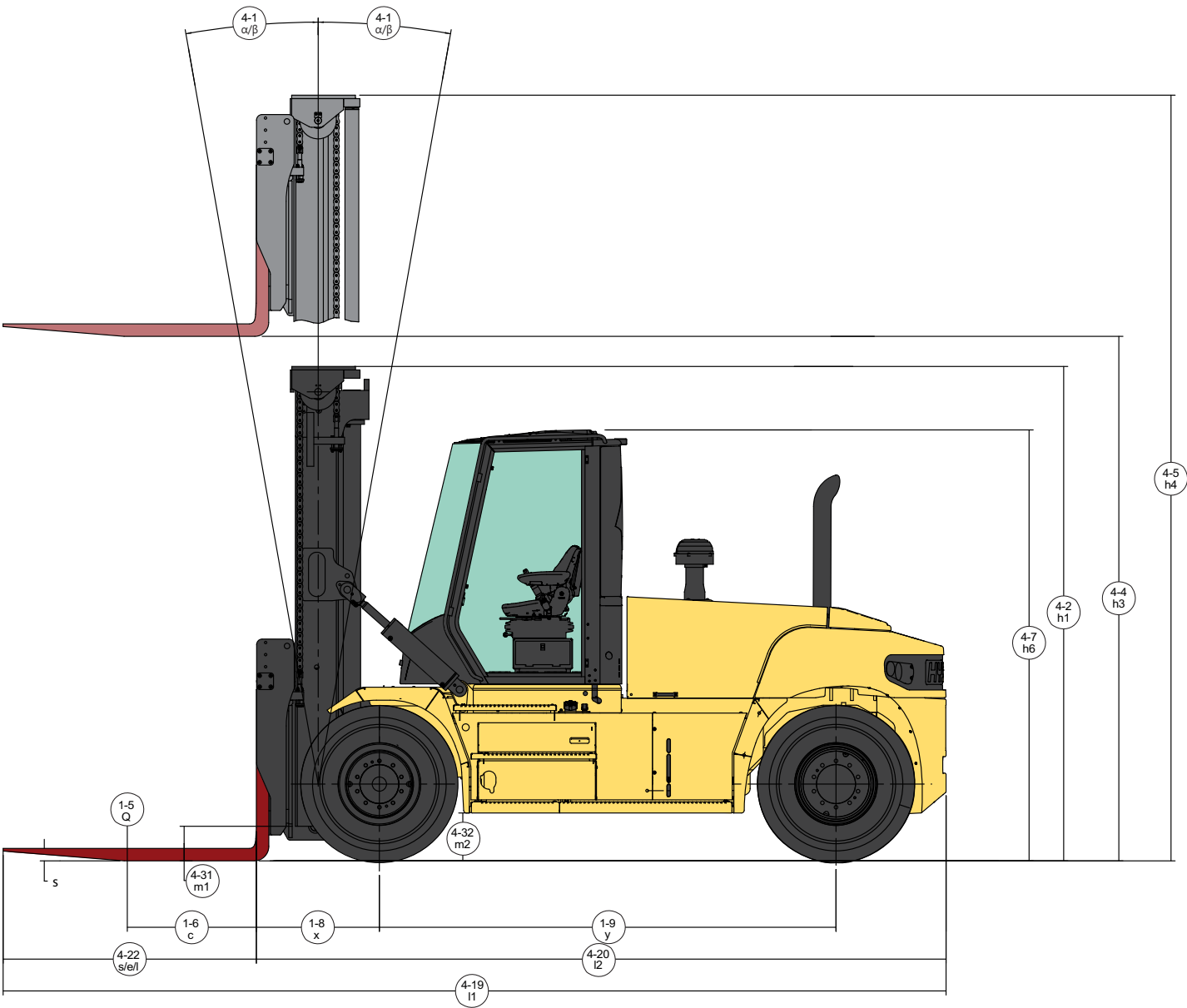
---



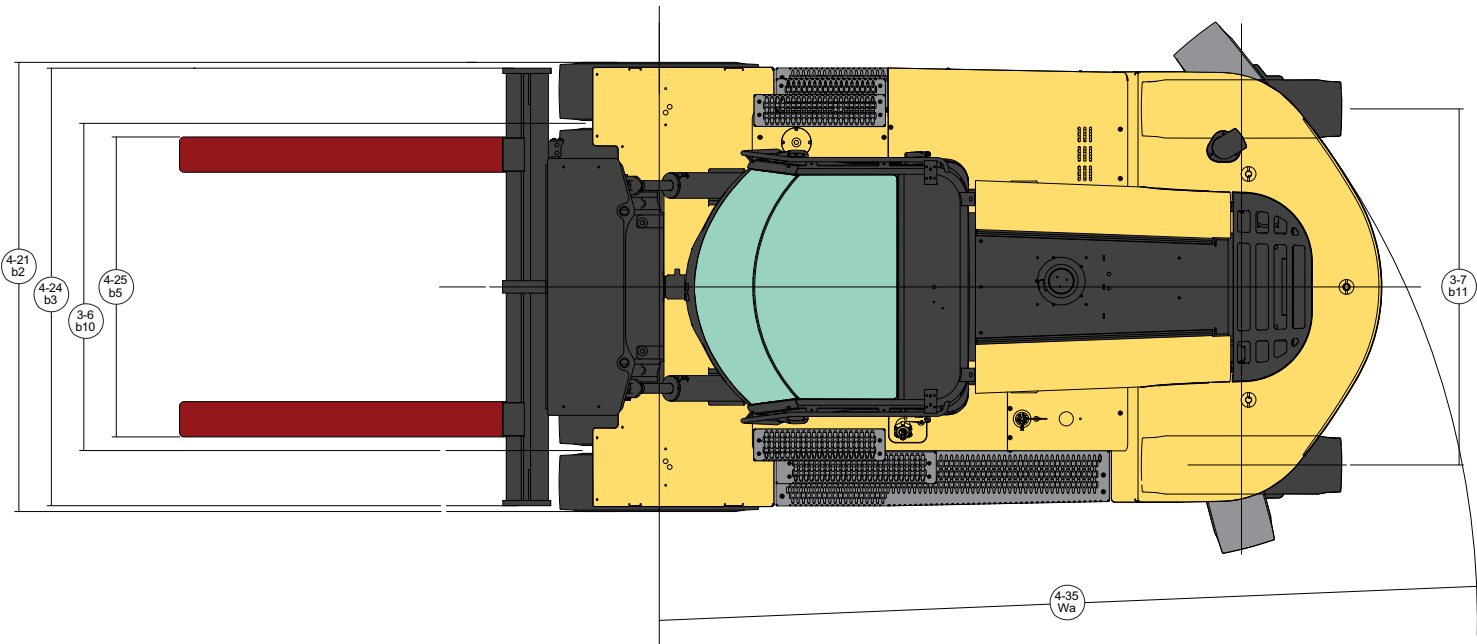
## HEAVY DUTY FORKLIFT TRUCK PNEUMATIC TIRE PRODUCT TECHNICAL GUIDE



DIMENSIONS



DIMENSIONS



# H330XD48 | H360XDS36 SPECIFICATIONS

GENERAL	1-1	Manufacturer			HYSTER				HYSTER					
	1-2	Model designation			H330XD48				H360XDS36					
	1-3	Powertrain / drivetrain			Diesel				Diesel					
	1-4	Operator type			Seated				Seated					
	1-5	Rated load capacity	Q	lb	kg	33,000		14,969	36,000		16,329			
	1-6	Load center	c	in	mm	48		1,219	36		914			
	1-8	Load distance	x	in	mm	37.0		941	37.0		941			
	1-9	Wheelbase	y	in	mm	138		3,500	138		3,500			
	WEIGHT	2-1	Total truck weight without load			lb	kg	49,104		22,273	47,563		21,574	
2-2		Axle loading with load, front / rear			lb	kg	75,120	6,984	34,074	3,168	77,049	6,512	34,949	2,954
2-3		Axle loading without load, front / rear			lb	kg	21,751	27,353	9,866	12,407	21,967	25,596	9,964	11,610
WHEELS	3-1	Tire type			Pneumatic				Pneumatic					
	3-2	Tire size, front			12.00-20 16PR				12.00-20 16PR					
	3-3	Tire size, rear			12.00-20 16PR				12.00-20 16PR					
	3-5	Number of tires, front / rear ( X driven )			#				x4/2					
	3-6	Tread width, front	b <sub>10</sub>	in	mm	72.6		1,844	72.6		1,844			
	3-7	Tread width, rear	b <sub>11</sub>	in	mm	79.5		2,020	79.5		2,020			
	DIMENSIONS	4-1	Mast tilt, forward / back			α/β	Degree		15°F / 10°B		15°F / 10°B			
4-2		Height of mast lowered			h <sub>1</sub>	in	mm	146		3,703	146		3,703	
4-3		Freelift			h <sub>2</sub>	in	mm	0		0	0		0	
4-4		Lift height (top of fork)			h <sub>3</sub>	in	mm	157		3,984	157		3,984	
4-4-1		Lift height (bottom of fork)			h <sub>3</sub>	in	mm	153		3,884	153		3,884	
4-5		Height, extended			h <sub>4</sub>	in	mm	222		5,645	222		5,645	
4-7		Height to top of operator compartment (open cab)			h <sub>6</sub>	in	mm	121.4		3,083	121.4		3,083	
4-7-1		Height, top of operator comp (closed cab)			h <sub>6</sub>	in	mm	122.4		3,110	122.4		3,110	
4-7-2		Height, top of operator comp (closed cab w/ airco)			h <sub>6</sub>	in	mm	122.4		3,110	122.4		3,110	
4-7-3		Height, top of operator comp (closed cab w/ strobe light)			h <sub>6</sub>	in	mm	126.2		3,205	126.2		3,205	
4-7-4		Height, top of operator comp (closed cab w/ work lights)			h <sub>6</sub>	in	mm	128.3		3,259	128.3		3,259	
4-7-5		Height, top of operator comp (closed cab w/ airco & strobe)			h <sub>6</sub>	in	mm	127.4		3,235	127.4		3,235	
4-8		Seat height to seat point index (SIP)			h <sub>7</sub>	in	mm	75		1,903	75		1,903	
4-12		Tow coupler height			h <sub>10</sub>	in	mm	27		689	27		689	
4-19		Overall length			l <sub>1</sub>	in	mm	307		7,806	307		7,806	
4-20		Length to load face			l <sub>2</sub>	in	mm	211		5,366	211		5,366	
4-21		Overall width of truck			b <sub>2</sub>	in	mm	100		2,541	100		2,541	
4-22		Fork dimension			s/e/l	in	mm	3.9 / 8 / 96		100 / 200 / 2,440	3.9 / 8 / 96		100 / 200 / 2,440	
4-23		Fork carriage type			Type				Standard pin type carriage					
4-24		Carriage width			b <sub>3</sub>	in	mm	100		2,540	100		2,540	
4-25-1		Fork spread, min (in-in)			b <sub>5</sub>	in	mm	2.8		70	2.8		70	
4-25-2		Fork spread, max (out-out)			b <sub>5</sub>	in	mm	96.1		2,440	96.1		2,440	
4-30		Sideshift			b <sub>8</sub>	in	mm	0		0	0		0	
4-31		Ground clearance, under mast w/o load			m <sub>1</sub>	in	mm	8.9		225	8.9		225	
4-32		Ground clearance, center of wheelbase			m <sub>2</sub>	in	mm	13.4		341	13.4		341	
4-34		Minimum aisle width (add load length & clearance)			Ast	in	mm	229		5,815	229		5,815	
4-35		Outside turning radius			Wa	in	mm	192		4,874	192		4,874	
PERFORMANCE		TIER 4F						CUMMINS QSB 6.7L				CUMMINS QSB 6.7L		
	5-1	Travel speed, with / without load			mph	km/h	16.8	18.0	27	29	16.8	18.0	27	29
	5-2-2	Lifting speed, with / without load - 111cc pump			ft/min	m/s	-	-	-	-	-	-	-	-
	5-2-3	Lifting speed, with / without load - 126cc pump			ft/min	m/s	75	87	0.38	0.44	75	87	0.38	0.44
	5-3	Lowering speed, with / without load			ft/min	m/s	106	89	0.54	0.45	106	89	0.54	0.45
	5-5	Drawbar pull - 1 mph (1.6 km/h), with / without load			lb	kN	22,500	23,700	108	110	22,400	23,800	107	110
	5-6	Drawbar pull - stall, with / without load			lb	kN	25,300	26,600	120	123	25,200	26,600	120	123
	5-7	Gradeability - 1 mph (1.6 km/h), with / without load			%		31		33		30		34	
	5-8	Gradeability stall, with load / without load			%		35		33		34		34	
	TIER 3						CUMMINS QSB 6.7L				CUMMINS QSB 6.7L			
	5-1	Travel speed, with / without load			mph	km/h	16.8	18.0	27	29	16.8	18.0	27	29
	5-2-2	Lifting speed, with / without load - 111cc pump			ft/min	m/s	-	-	-	-	-	-	-	-
	5-2-3	Lifting speed, with / without load - 126cc pump			ft/min	m/s	65	87	0.33	0.44	65	87	0.33	0.44
	5-3	Lowering speed, with / without load			ft/min	m/s	106	89	0.54	0.45	106	89	0.54	0.45
	5-5	Drawbar pull - 1 mph (1.6 km/h), with / without load			lb	kN	20,400	21,600	98	101	20,300	21,700	98	101
	5-6	Drawbar pull - stall, with / without load			lb	kN	23,100	24,400	111	113	23,000	24,400	110	113
	5-7	Gradeability - 1 mph (1.6 km/h), with / without load			%		28		33		27		34	
	5-8	Gradeability stall, with load / without load			%		32		33		31		34	

# H360XDS48 | H400XD SPECIFICATIONS

GENERAL	1-1	Manufacturer			HYSTER				HYSTER					
	1-2	Model designation			H360XDS48				H400XD					
	1-3	Powertrain / drivetrain			Diesel				Diesel					
	1-4	Operator type			Seated				Seated					
	1-5	Rated load capacity	Q	lb	kg	36,000		16,329	40,000		18,144			
	1-6	Load center	c	in	mm	48		1,219	24		610			
	1-8	Load distance	x	in	mm	37.0		941	37.0		941			
	1-9	Wheelbase	y	in	mm	138		3,500	138		3,500			
	WEIGHT	2-1	Total truck weight without load			lb	kg	51,546		23,381	45,894		20,817	
2-2		Axle loading with load, front / rear			lb	kg	79,973	7,573	36,275	3,435	79,713	6,182	36,157	2,804
2-3		Axle loading without load, front / rear			lb	kg	21,753	29,793	9,867	13,514	21,991	23,903	9,975	10,842
WHEELS	3-1	Tire type			Pneumatic				Pneumatic					
	3-2	Tire size, front			12.00-20 16PR				12.00-20 16PR					
	3-3	Tire size, rear			12.00-20 16PR				12.00-20 16PR					
	3-5	Number of tires, front / rear ( X driven )			#				#					
	3-6	Tread width, front			b <sub>10</sub>	in	mm	72.6		1,844	72.6		1,844	
	3-7	Tread width, rear			b <sub>11</sub>	in	mm	79.5		2,020	79.5		2,020	
DIMENSIONS	4-1	Mast tilt, forward / back			α/β	Degree		15°F / 10°B		15°F / 10°B				
	4-2	Height of mast lowered			h <sub>1</sub>	in	mm	146		3,703	146		3,703	
	4-3	Freelift			h <sub>2</sub>	in	mm	0		0	0		0	
	4-4	Lift height (top of fork)			h <sub>3</sub>	in	mm	157		3,984	157		3,984	
	4-4-1	Lift height (bottom of fork)			h <sub>3</sub>	in	mm	153		3,884	153		3,884	
	4-5	Height, extended			h <sub>4</sub>	in	mm	222		5,645	222		5,645	
	4-7	Height to top of operator compartment (open cab)			h <sub>6</sub>	in	mm	121.4		3,083	121.4		3,083	
	4-7-1	Height, top of operator comp (closed cab)			h <sub>6</sub>	in	mm	122.4		3,110	122.4		3,110	
	4-7-2	Height, top of operator comp (closed cab w/ airco)			h <sub>6</sub>	in	mm	122.4		3,110	122.4		3,110	
	4-7-3	Height, top of operator comp (closed cab w/ strobe light)			h <sub>6</sub>	in	mm	126.2		3,205	126.2		3,205	
	4-7-4	Height, top of operator comp (closed cab w/ work lights)			h <sub>6</sub>	in	mm	128.3		3,259	128.3		3,259	
	4-7-5	Height, top of operator comp (closed cab w/ airco & strobe)			h <sub>6</sub>	in	mm	127.4		3,235	127.4		3,235	
	4-8	Seat height to seat point index (SIP)			h <sub>7</sub>	in	mm	75		1,903	75		1,903	
	4-12	Tow coupler height			h <sub>10</sub>	in	mm	27		689	27		689	
	4-19	Overall length			l <sub>1</sub>	in	mm	308		7,823	307		7,806	
	4-20	Length to load face			l <sub>2</sub>	in	mm	212		5,383	211		5,366	
	4-21	Overall width of truck			b <sub>2</sub>	in	mm	100		2,541	100		2,541	
	4-22	Fork dimension			s/e/l	in	mm	3.9 / 8 / 96		100 / 200 / 2,440	3.9 / 8 / 96		100 / 200 / 2,440	
	4-23	Fork carriage type			Type			Standard pin type carriage		Standard pin type carriage				
	4-24	Carriage width			b <sub>3</sub>	in	mm	100		2,540	100		2,540	
	4-25-1	Fork spread, min (in-in)			b <sub>5</sub>	in	mm	2.8		70	2.8		70	
	4-25-2	Fork spread, max (out-out)			b <sub>5</sub>	in	mm	96.1		2,440	96.1		2,440	
	4-30	Sideshift			b <sub>8</sub>	in	mm	0		0	0		0	
	4-31	Ground clearance, under mast w/o load			m <sub>1</sub>	in	mm	8.9		225	8.9		225	
	4-32	Ground clearance, center of wheelbase			m <sub>2</sub>	in	mm	13.4		341	13.4		341	
	4-34	Minimum aisle width (add load length & clearance)			Ast	in	mm	229		5,815	229		5,815	
	4-35	Outside turning radius			Wa	in	mm	192		4,874	192		4,874	
PERFORMANCE	TIER 4F			CUMMINS QSB 6.7L				CUMMINS QSB 6.7L						
	5-1	Travel speed, with / without load			mph	km/h	16.8	18.0	27	29	16.8	18.0	27	29
	5-2-2	Lifting speed, with / without load - 111cc pump			ft/min	m/s	-	-	-	-	-	-	-	
	5-2-3	Lifting speed, with / without load - 126cc pump			ft/min	m/s	75	87	0.38	0.44	75	87	0.38	0.44
	5-3	Lowering speed, with / without load			ft/min	m/s	106	89	0.54	0.45	106	89	0.54	0.45
	5-5	Drawbar pull - 1 mph (1.6 km/h), with / without load			lb	kN	22,200	23,600	107	110	22,300	23,900	107	110
	5-6	Drawbar pull - stall, with / without load			lb	kN	25,100	26,500	120	123	25,100	26,700	120	123
	5-7	Gradeability - 1 mph (1.6 km/h), with / without load			%		28		31		29		35	
	5-8	Gradeability stall, with load / without load			%		32		31		33		35	
	TIER 3			CUMMINS QSB 6.7L				CUMMINS QSB 6.7L						
	5-1	Travel speed, with / without load			mph	km/h	16.8	18.0	27	29	16.8	18.0	27	29
	5-2-2	Lifting speed, with / without load - 111cc pump			ft/min	m/s	-	-	-	-	-	-	-	
	5-2-3	Lifting speed, with / without load - 126cc pump			ft/min	m/s	65	87	0.33	0.44	65	87	0.33	0.44
	5-3	Lowering speed, with / without load			ft/min	m/s	106	89	0.54	0.45	106	89	0.54	0.45
	5-5	Drawbar pull - 1 mph (1.6 km/h), with / without load			lb	kN	20,100	21,500	98	101	20,200	21,800	98	101
	5-6	Drawbar pull - stall, with / without load			lb	kN	22,900	24,300	110	113	22,900	24,500	110	113
	5-7	Gradeability - 1 mph (1.6 km/h), with / without load			%		26		31		26		35	
	5-8	Gradeability stall, with load / without load			%		29		31		30		35	

# H360XD36 | H360XD48 SPECIFICATIONS

GENERAL	1-1	Manufacturer			HYSTER				HYSTER						
	1-2	Model designation			H360XD36				H360XD48						
	1-3	Powertrain / drivetrain			Diesel				Diesel						
	1-4	Operator type			Seated				Seated						
	1-5	Rated load capacity	Q	lb	kg	36,000		16,329	36,000		16,329				
	1-6	Load center	c	in	mm	36		914	48		1,219				
	1-8	Load distance	x	in	mm	37.0		941	37.0		941				
	1-9	Wheelbase	y	in	mm	148		3,750	148		3,750				
	WEIGHT	2-1	Total truck weight without load			lb		kg	46,134		20,926		49,827		22,601
2-2		Axle loading with load, front / rear			lb		kg	76,031	6,102	34,487	2,768	78,778	7,048	35,733	3,197
2-3		Axle loading without load, front / rear			lb		kg	22,220	23,914	10,079	10,847	22,040	27,787	9,997	12,604
WHEELS	3-1	Tire type			Type			Pneumatic				Pneumatic			
	3-2	Tire size, front			12.00-20 16PR				12.00-20 16PR						
	3-3	Tire size, rear			12.00-20 16PR				12.00-20 16PR						
	3-5	Number of tires, front / rear ( X driven )			#			x4/2				x4/2			
	3-6	Tread width, front			b <sub>10</sub>	in	mm	72.6		1,844	72.6		1,844		
	3-7	Tread width, rear			b <sub>11</sub>	in	mm	79.5		2,020	79.5		2,020		
	DIMENSIONS	4-1	Mast tilt, forward / back			α/β			15°F / 10°B				15°F / 10°B		
4-2		Height of mast lowered			h <sub>1</sub>	in	mm	146		3,703	146		3,703		
4-3		Freelift			h <sub>2</sub>	in	mm	0		0	0		0		
4-4		Lift height (top of fork)			h <sub>3</sub>	in	mm	157		3,984	157		3,984		
4-4-1		Lift height (bottom of fork)			h <sub>3</sub>	in	mm	153		3,884	153		3,884		
4-5		Height, extended			h <sub>4</sub>	in	mm	222		5,645	222		5,645		
4-7		Height to top of operator compartment (open cab)			h <sub>6</sub>	in	mm	121.4		3,083	121.4		3,083		
4-7-1		Height, top of operator comp (closed cab)			h <sub>6</sub>	in	mm	122.4		3,110	122.4		3,110		
4-7-2		Height, top of operator comp (closed cab w/ airco)			h <sub>6</sub>	in	mm	122.4		3,110	122.4		3,110		
4-7-3		Height, top of operator comp (closed cab w/ strobe light)			h <sub>6</sub>	in	mm	126.2		3,205	126.2		3,205		
4-7-4		Height, top of operator comp (closed cab w/ work lights)			h <sub>6</sub>	in	mm	128.3		3,259	128.3		3,259		
4-7-5		Height, top of operator comp (closed cab w/ airco & strobe)			h <sub>6</sub>	in	mm	127.4		3,235	127.4		3,235		
4-8		Seat height to seat point index (SIP)			h <sub>7</sub>	in	mm	75		1,903	75		1,903		
4-12		Tow coupler height			h <sub>10</sub>	in	mm	27		689	27		689		
4-19		Overall length			l <sub>1</sub>	in	mm	317		8,056	317		8,056		
4-20		Length to load face			l <sub>2</sub>	in	mm	221		5,616	221		5,616		
4-21		Overall width of truck			b <sub>2</sub>	in	mm	100		2,541	100		2,541		
4-22		Fork dimension			s/e/l	in	mm	3.9 / 8 / 96		100 / 200 / 2,440	3.9 / 8 / 96		100 / 200 / 2,440		
4-23		Fork carriage type			Type			Standard pin type carriage				Standard pin type carriage			
4-24		Carriage width			b <sub>3</sub>	in	mm	100		2,540	100		2,540		
4-25-1		Fork spread, min (in-in)			b <sub>5</sub>	in	mm	2.8		70	2.8		70		
4-25-2		Fork spread, max (out-out)			b <sub>5</sub>	in	mm	96.1		2,440	96.1		2,440		
4-30		Sideshift			b <sub>8</sub>	in	mm	0		0	0		0		
4-31		Ground clearance, under mast w/o load			m <sub>1</sub>	in	mm	8.9		225	8.9		225		
4-32		Ground clearance, center of wheelbase			m <sub>2</sub>	in	mm	13.4		341	13.4		341		
4-34		Minimum aisle width (add load length & clearance)			Ast	in	mm	241		6,126	241		6,126		
4-35		Outside turning radius			Wa	in	mm	204		5,185	204		5,185		
PERFORMANCE		TIER 4F						CUMMINS QSB 6.7L				CUMMINS QSB 6.7L			
	5-1	Travel speed, with / without load				mph	km/h	16.8	18.0	27	29	16.8	18.0	27	29
	5-2-2	Lifting speed, with / without load - 111cc pump				ft/min	m/s	-	-	-	-	-	-	-	-
	5-2-3	Lifting speed, with / without load - 126cc pump				ft/min	m/s	75	87	0.38	0.44	75	87	0.38	0.44
	5-3	Lowering speed, with / without load				ft/min	m/s	106	89	0.54	0.45	106	89	0.54	0.45
	5-5	Drawbar pull - 1 mph (1.6 km/h), with / without load				lb	kN	22,400	23,800	108	110	22,300	23,700	107	110
	5-6	Drawbar pull - stall, with / without load				lb	kN	25,300	26,700	120	123	25,100	26,500	120	123
	5-7	Gradeability - 1 mph (1.6 km/h), with / without load				%		31		38		29		36	
	5-8	Gradeability stall, with load / without load				%		35		38		33		36	
	TIER 3						CUMMINS QSB 6.7L				CUMMINS QSB 6.7L				
	5-1	Travel speed, with / without load				mph	km/h	16.8	18.0	27	29	16.8	18.0	27	29
	5-2-2	Lifting speed, with / without load - 111cc pump				ft/min	m/s	-	-	-	-	-	-	-	-
	5-2-3	Lifting speed, with / without load - 126cc pump				ft/min	m/s	65	87	0.33	0.44	65	87	0.33	0.44
	5-3	Lowering speed, with / without load				ft/min	m/s	106	89	0.54	0.45	106	89	0.54	0.45
	5-5	Drawbar pull - 1 mph (1.6 km/h), with / without load				lb	kN	20,400	21,700	98	101	20,200	21,600	98	101
	5-6	Drawbar pull - stall, with / without load				lb	kN	23,100	24,500	110	113	22,900	24,300	110	113
	5-7	Gradeability - 1 mph (1.6 km/h), with / without load				%		28		38		26		36	
	5-8	Gradeability stall, with load / without load				%		32		38		30		36	



POWERTRAIN							
GENERAL	1-1	Manufacturer		HYSTER		HYSTER	
	1-2	Model designation		H280-H330XD48, H360XD(S)36, H360XD(S)48, H400XD		H280-H330XD48, H360XD(S)36, H360XD(S)48, H400XD	
	1-3	Powertrain / drivetrain		Diesel		Diesel	
ENGINE	7-1	Engine Manufacturer / model		Cummins / QSB 6.7L		Cummins / QSB 6.7L	
	7-1a	EPA Tier Compliance		Tier 4 / Stage IV		Tier 3 / Stage IIIA	
	7-2	Engine power output - rated	hp   kW	164@2300   122@2300		156@2300   116@2300	
	7-2-1	Engine power output - peak	hp   kW	168@2100   125@2100		156@2300   116@2300	
	7-3	Rated speed	rpm   rpm	2,300		2,300	
	7-3a	Peak speed	rpm   rpm	2,100		2,300	
	7-3-1	Engine torque @ rpm (1/min)	lb-ft   N-m	540@1500   732@1500		440@1500   597@1500	
	7-4	Number of cylinders / displacement	# / in3   # / cm3	6 / 409   6 / 6700		6 / 409   6 / 6700	
	x	Turbocharger	Type	Variable geometry, water cooled		Wastegate, water cooled	
	7-8	Alternator output	Amps	120		120	
	7-9	Electrical system voltage	V	24		24	
	7-10	Battery voltage / nominal capacity	V / Ah	24 / 102		24 / 102	
	8-0	Drive control / transmission	Type	Powershift transmission		Powershift transmission	
	8-1	Type of drive unit	Type	Torque converter		Torque converter	
DRIVE	8-2	Transmission manufacturer / type	Type	ZF / 3WG161		ZF / 3WG161	
	8-2-1	Transmission speeds forward / reverse	#	3 / 3		3 / 3	
	8-3	Wheel drive / drive axle manufacturer / type	Type	Kessler / D81		Kessler / D81	
	8-4	Service brake	Type	Oil immersed (wet) disc		Oil immersed (wet) disc	
	8-5	Parking brake	Type	Spring apply, dry disc on drive axle		Spring apply, dry disc on drive axle	
MISC	10-1	Operating pressure for attachments	psi   MPa	3,263   23		3,263   23	
	10-2	Oil flow for attachments	gpm   l/m	26.4   100		26.4   100	
	10-3	Hydraulic oil tank, capacity	gal   l	32   121		32   121	
	10-4	Fuel tank, capacity	gal   l	40   151		40   151	
	10-4-1	DEF tank, capacity	gal   l	5   19		N/A   N/A	
	10-5	Steering design	Type	Hydraulic power steering		Hydraulic power steering	
	10-6	Number of steering rotation	#	5.0		5.0	
	10-8	Towing coupling, type DIN	Type	Pin		Pin	

## NOTES:

Specifications are affected by the condition of the vehicle and how it is equipped, as well as the nature and condition of the operating area. Inform your dealer of the nature and condition of the intended operating area when purchasing your Hyster® truck.

All capacities are according to ANSI B56.

Specification data is based on VDI 2198.

**CE** Safety: This truck conforms to the current ANSI requirements.

## NOTICE:

Care must be exercised when handling elevated loads. Operators must be trained and must read, understand and follow the instructions contained in the Operating Manual.

All values are nominal values and they are subject to tolerances. For further information, please contact the manufacturer.

Hyster products are subject to change without notice.

Lift trucks illustrated may feature optional equipment. Values may vary with alternative configurations.

## CERTIFICATION:

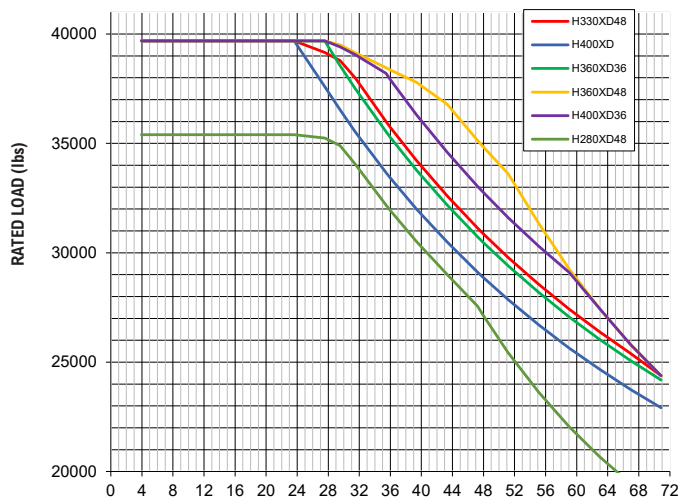
Hyster lift trucks meet the design and construction requirements of B56.1-1969, per OSHA Section 1910.178(a)(2), and also comply with the B56.1 revision in effect at time of manufacture. Certification of compliance with the applicable ANSI standards appears on the lift truck. Performance specifications are for a truck equipped as described under Standard Equipment on this Technical Guide. Performance specifications are affected by the condition of the vehicle and how it is equipped, as well as by the nature, condition of the operating area, proper service and maintenance of the vehicle. If these specifications are critical, the proposed application should be discussed with your dealer.

## NOTE:

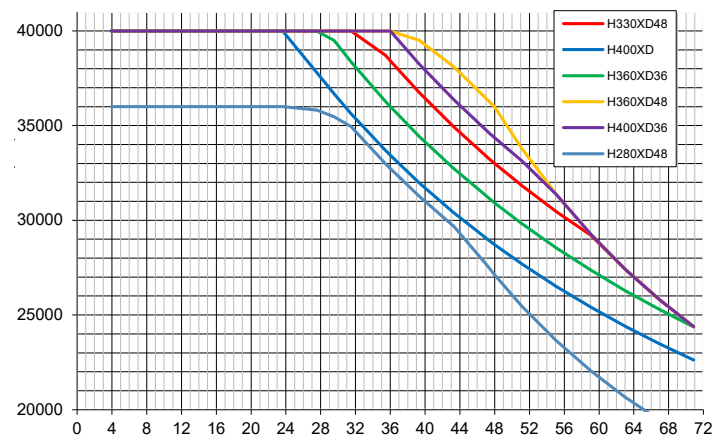
Specifications, unless otherwise listed, are for a standard truck without optional equipment.

# CAPACITY RATINGS

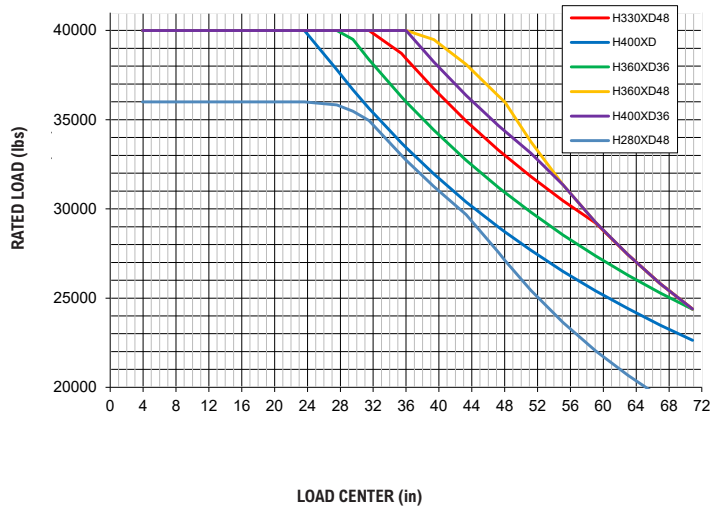
RATED LOAD VS. LOAD CENTER | DF-SS-FP CARRIAGE | U.S. CUSTOMARY



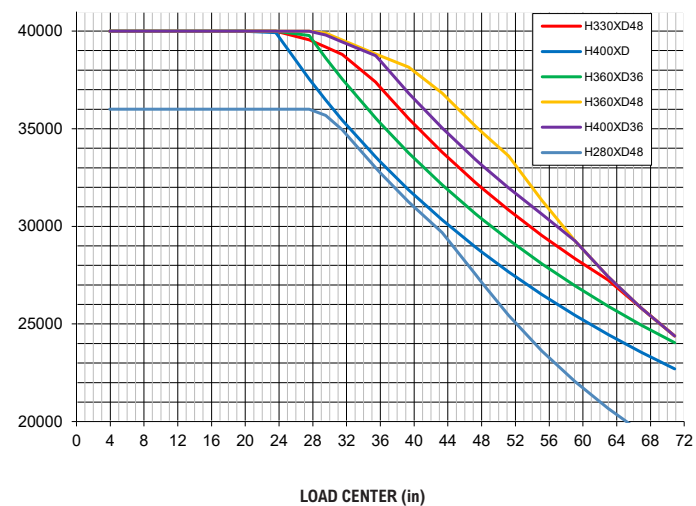
RATED LOAD VS. LOAD CENTER | STD PIN TYPE | U.S. CUSTOMARY



RATED LOAD VS. LOAD CENTER | STD PIN TYPE WITH FP | U.S. CUSTOMARY



RATED LOAD VS. LOAD CENTER | SIDE SHFT PIN TYPE WITH FP | U.S. CUSTOMARY





# CAPACITY SPECIFICATIONS

**RATED CAPACITY: H330XD48 @ 48 IN (1220 MM) LOAD CENTER**

2-STAGE NFL	Lift height TOF		Lift height BOF		Overall lowered height		Overall extended height		Mast weight		Standard pin type carriage		Apron pin type carriage		Integral DFSSFP carriage	
											H330XD48		H330XD48		H330XD48	
	in	mm	in	mm	in	mm	in	mm	lb	kg	lb	kg	lb	kg	lb	kg
	156	3,984	152	3,884	121	3,680	174	5,622	4,209	2,525	33,000	14,969	32,200	14,606	33,000	14,969
	180	4,594	176	4,494	126	3,985	183	6,232	4,339	2,599	33,000	14,969	32,100	14,560	32,900	14,923
	212	5,406	208	5,306	131	4,391	193	7,044	4,464	2,676	33,000	14,969	32,000	14,515	32,800	14,878
	244	6,219	240	6,119	136	4,798	203	7,858	4,597	2,751	32,400	14,696	31,300	14,197	26,800	12,156

Capacities are calculated using 96" x 3.9" x 7.9" forks

**RATED CAPACITY: H400XD @ 24 IN (610 MM) LOAD CENTER**

2-STAGE NFL	Lift height TOF		Lift height BOF		Overall lowered height		Overall extended height		Mast weight		Standard pin type carriage		Apron pin type carriage		Integral DFSSFP carriage	
											H400XD		H400XD		H400XD	
	in	mm	in	mm	in	mm	in	mm	lb	kg	lb	kg	lb	kg	lb	kg
	156	3,984	152	3,884	121	3,680	174	5,622	4,209	2,525	40,000	18,144	40,000	18,144	40,000	18,144
	180	4,594	176	4,494	126	3,985	183	6,232	4,339	2,599	40,000	18,144	40,000	18,144	40,000	18,144
	212	5,406	208	5,306	131	4,391	193	7,044	4,464	2,676	40,000	18,144	40,000	18,144	38,800	17,599
	244	6,219	240	6,119	136	4,798	203	7,858	4,597	2,751	39,200	17,781	39,200	17,781	29,500	13,381

Capacities are calculated using 96" x 3.9" x 7.9" forks

**RATED CAPACITY: H360XD(S)36 @ 36 IN (910 MM) LOAD CENTER**

2-STAGE NFL	Lift height TOF		Lift height BOF		Overall lowered height		Overall extended height		Mast weight		Standard pin type carriage				Apron pin type carriage				Integral DFSSFP carriage			
											H360XDS36		H360XD36		H360XDS36		H360XD36		H360XDS36		H360XD36	
	in	mm	in	mm	in	mm	in	mm	lb	kg	lb	kg	lb	kg	lb	kg	lb	kg	lb	kg	lb	kg
	156	3,984	152	3,884	121	3,680	174	5,622	4,209	2,525	36,000	16,329	36,000	16,329	36,000	16,329	36,000	16,329	36,000	16,329	36,000	16,329
	180	4,594	176	4,494	126	3,985	183	6,232	4,339	2,599	36,000	16,329	36,000	16,329	36,000	16,329	36,000	16,329	36,000	16,329	36,000	16,329
	212	5,406	208	5,306	131	4,391	193	7,044	4,464	2,676	36,000	16,329	36,000	16,329	35,900	16,284	35,900	16,284	36,000	16,329	36,000	16,329
	244	6,219	240	6,119	136	4,798	203	7,858	4,597	2,751	35,300	16,012	35,300	16,012	35,100	15,921	35,100	15,921	28,000	12,701	28,900	13,109

Capacities are calculated using 96" x 3.9" x 7.9" forks

**RATED CAPACITY: H360XD(S)48 @ 48 IN (1220 MM) LOAD CENTER**

2-STAGE NFL	Lift height TOF		Lift height BOF		Overall lowered height		Overall extended height		Mast weight		Standard pin type carriage				Apron pin type carriage				Integral DFSSFP carriage			
											H360XDS48		H360XD48		H360XDS48		H360XD48		H360XDS48		H360XD48	
	in	mm	in	mm	in	mm	in	mm	lb	kg	lb	kg	lb	kg	lb	kg	lb	kg	lb	kg	lb	kg
	156	3,984	152	3,884	121	3,680	174	5,622	4,209	2,525	36,000	16,329	36,000	16,329	35,600	16,148	35,600	16,148	36,000	16,329	36,000	16,329
	180	4,594	176	4,494	126	3,985	183	6,232	4,339	2,599	36,000	16,329	36,000	16,329	35,500	16,103	35,500	16,103	36,000	16,329	36,000	16,329
	212	5,406	208	5,306	131	4,391	193	7,044	4,464	2,676	36,000	16,329	36,000	16,329	35,300	16,012	35,300	16,012	36,000	16,329	36,000	16,329
	244	6,219	240	6,119	136	4,798	203	7,858	4,597	2,751	35,400	16,057	35,400	16,057	34,700	15,740	34,600	15,694	27,500	12,474	29,400	13,336

Capacities are calculated using 96" x 3.9" x 7.9" forks

# FEATURES AND OPTIONS

PERFORMANCE	STD	OPT
Cummins QSB 6.7L Tier 4F diesel engine 164 hp (122 kW)*	x	
Cummins QSB 6.7L Tier 3 diesel engine 156 hp (116 kW)*	x	
Tier 4/Stage IV compliant	x	
Tier 3/Stage IIIA compliant	x	
Wastegate turbocharger, water cooled - Tier 3/Stage IIIA	x	
Variable geometry turbocharger, water cooled - Tier 4	x	
Delayed engine shutdown for turbo cooldown		x
On-demand cooling fan	x	
120 amp alternator	x	
Performance modes selectable in integrated performance display	x	
Powertrain protection system	x	
Heavy duty air intake	x	
Heavy duty air intake (raised)		x
Low mount exhaust (below chassis)	x	
High mount exhaust		x
ZF Transmission WG161 3-speeds fwd/3-speeds reverse auto-shifting	x	
Kessler D81 drive axle with wet disc brakes	x	
DRIVE	STD	OPT
Travel speed limiter - unconditional and customer adjustable		x
Travel speed limiter - loaded (adjustable)		x
12.00 - 20 20PR Trelleborg Pneumatic Bias Ply drive and steer tires	x	
12.00 - R20 Michelin® XZM Radial drive and steer tires		x
LIFT	STD	OPT
126cc dual pump hydraulic system	x	
On-demand load sensing hydraulic system	x	
Automatic throttle-up when lifting (in neutral or inching)	x	
2-stage non free lift mast	x	
2-stage full free lift mast		x
3-stage full free lift mast		x
Mast tilt - 6° forward/10° back		x
Mast tilt - 10.5° forward/12° back		x
Mast tilt - 15° forward/10° back	x	
Mast tilt indicator - mechanical		x
Hydraulic accumulator		x
Pressure compensated lowering	x	
Hydraulic system temperature protection with performance de-rate		x
HANDLING	STD	OPT
100" (2540 mm) pin type carriage with mechanical fork locks	x	
100" (2540 mm) pin type carriage with individual fork positioner		x
100" (2540 mm) pin type apron-style sideshift carriage		x
100" (2540 mm) pin type apron-style sideshift carriage with individual fork positioner		x
100" (2540 mm) dual function sideshift carriage with individual fork positioner for integral forks		x
100" (2540 mm) dual function sideshift carriage with individual fork positioner for quick disconnect forks		x
100" (2540 mm) dual function sideshift carriage with simultaneous and individual fork positioner for quick disconnect forks		x
100" (2540 mm) dual function sideshift carriage with simultaneous and individual fork positioner for integral forks		x
100" (2540 mm) dual function sideshift carriage with simultaneous fork positioner for quick disconnect forks		x
96" (2440 mm) length pin type forks	x	
96" (2440 mm) length hook type forks		x
96" (2440 mm) length integral forks		x

ERGONOMICS	STD	OPT
Open operator compartment (without doors & screens)	x	
Enclosed operator cabin		x
Manual tilt operator compartment for service	x	
Powered tilt operator compartment for service		x
Isolated cabin mounting for low noise and vibration	x	
Operator presence system	x	
Mechanical suspension seat	x	
Air suspension seat		x
Deluxe air suspension seat		x
Low backrest seat	x	
High backrest seat		x
Armrest on left side	x	
Cloth seat cover		x
Vinyl seat cover	x	
Seat heating		x
Seat ventilation		x
2-point high visibility seatbelt	x	
Lateral seat sliding mechanism		x
Floor mat	x	
Coat hook	x	
Front, top and rear wipers		x
"H"-pattern front wiper (enclosed operator cabin)		x
"I"-pattern front wiper (enclosed operator cabin)		x
Laminated glass operator compartment front window		x
Tinted operator compartment windows (doors, rear and top window)		x
Tinted operator compartment top window		x
Lexan top window		x
Plexiglass shield in front of front window		x
Wire mesh installed on top of operator compartment		x
Vertical steel bar front window guard		x
Operator shield wire mesh		x
7" integrated performance display	x	
Touchpoint™ mini levers hydraulic control integrated in control arm	x	
Joystick hydraulic control integrated in control arm		x
Steering wheel without spinner knob	x	
Steering wheel with spinner knob		x
Directional control lever on steering column	x	
Hyster MONOTROL® pedal directional control		x
Directional control on mini-levers or joystick		x
Park brake - push button applied	x	
Park brake - automatically applied		x
Heater with adjustable speed fan (enclosed operator cabin)	x	
Telescoping & tilting steering column	x	
USB outlet inside armrest	x	
24-12 volt DC converter with 1 socket and 2 USB outlets	x	
24-12 volt DC converter with 2 sockets and 2 USB outlets		x
Air conditioning		x
Automatic climate control		x
Reading light		x
Sun shades on top and rear		x
Sun visors front window		x
Trainer seat		x
Recirculation fan		x
Additional recirculation fan		x
Accessory mounting bracket on cab front right pillar		x
Document holder on cab front right pillar		x
Heated top- and/or rear window		x
Radio preparation set-up (wiring, two speakers and antenna)		x

# FEATURES AND OPTIONS


VISIBILITY	STD	OPT
Steel bars on top of cab (open operator compartment)	x	
Top window with armored glass (enclosed operator cabin)	x	
Steel bars under armored glass top window (enclosed operator cabin)		x
Interior wide angle mirrors	x	
Exterior mirrors mounted to cab		x
Rear view camera system		x
Radar object detection system		x
Halogen work lights		x
High performance LED work lights		x
Two head lights mounted on front fenders		x
Four mast mounted work lights		x
Four cabin mounted work lights		x
Two rearward work lights mounted on the cabin		x
LED stop/tail/brake lights	x	
Turn signals, hazard & marker lights (LED)		x
OPERATION	STD	OPT
Air horn 112 dBA		x
Electric horn 105 dBA	x	
Visible alarm – Amber strobe light, ignition activated		x
Audible alarm – reverse direction activated 82–102 dB(A), self-adjusting	x	
Audible alarm – reverse direction white noise		x
Forward/reverse motion alarm		x
Blue LED spotlight – rear/front and rear		x
Air conditioning shut-off with open door		x
Automatic engine shutdown with timer		x
Lockable battery disconnect switch		x
Battery jump start connector (NATO plug)		x
Truck start with key switch and start button	x	
Operator password (display) for truck start	x	
Seatbelt interlock for truck start		x

OPERATION (CONTINUED)	STD	OPT
Power distribution group with fuses	x	
Fuses below 30 amps replaced by electric circuit breakers		x
Non-lockable fuel cap	x	
Lockable fuel cap		x
Fuel strainer in fuel filler neck		x
Hyster Tracker™ wireless asset management system	x	
Hyster Tracker™ wireless asset management - access/verification		x
Hyster Tracker™ wireless asset management - monitoring		x
Auto greasing system for base truck		x
24 volt electrical system	x	
Engine block heater 110 or 240 volt		x
Steer wheel lug nut protection		x
Front mud flaps		x
Rear mud flaps		x
Front and rear mud guards		x
Lifting eyes - 2 front and 2 rear		x
Wire mesh and plates belly pan		x
APPEARANCE	STD	OPT
Second capacity plate		x
Hyster yellow paint base truck	x	
Special paint base truck		x
Operator compartment special paint (complete cab)		x
Hazard warning striping on counterweight		x
SUPPLEMENTAL	STD	OPT
Literature package	x	
Operator's manual	x	
CE certification		x
U.L. label - standard construction	x	
Warranty: 12 months /2,000 hours parts & labor manufacturer's warranty*	x	
Warranty: 12 months/2,000 hours parts manufacturer's warranty*	x	

\*Standard or optional in select markets or on select models. Other options available through Special Products Engineering Department (SPED). Contact Hyster for details.



Hyster Company  
P.O. Box 7006, Greenville, North Carolina 27835-7006

© 2024 Hyster-Yale Materials Handling, Inc., all rights reserved. Hyster and  are trademarks of Hyster-Yale Materials Handling, Inc. Hyster products are subject to change without notice. Trucks may be shown with optional equipment and/or features not available in all regions.