



[WWW.HYSTER.COM](http://WWW.HYSTER.COM)

**HEAVY DUTY FORKLIFT TRUCK**  
**PRODUCT BROCHURE**

# H800-1050XD/S SERIES

---



# HYSTER® H800-1050XD/S SERIES

## HEAVY DUTY TRUCKS FOR EXTREME DUTY APPLICATIONS

Hyster Company has a long history of building heavy duty forklift trucks for heavy duty applications. The Hyster® H800-1050XD/S series represents the 80,000-105,000 lb forklift solution from Hyster Company suited for the tough applications. The trucks come standard with a Tier 4 Final Cummins QSX-12 engine with a 5-speed Spicer Off-Highway TE-30 powershift transmission. The engine features cooled exhaust gas recirculation (EGR) and Selective Catalytic Reduction (SCR). Using reliable and proven components to help provide high productivity and an overall lower cost of ownership under extreme operating conditions, this truck is your performance solution.

Easy servicing is another hallmark of this truck while offering lower fuel consumption\* than our prior Tier 3 products. The H800-1050XD/S forklift trucks are also available with a Tier 3 QSX 12 engine for non-regulated markets.

Over 90 years of heritage building tough forklift trucks is brought to bear in this series, available in seven models for use in steel, heavy breakbulk, machinery, concrete and specialty applications.

*\* Results will vary based on application, physical environment, fuel quality, etc.*

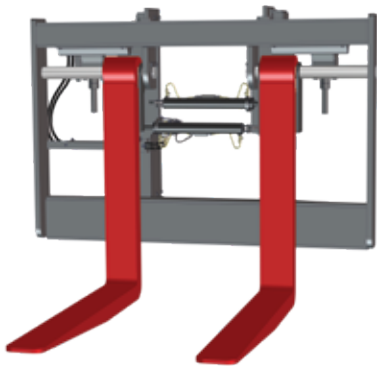


# ENGINEERED USING PROVEN COMPONENTS

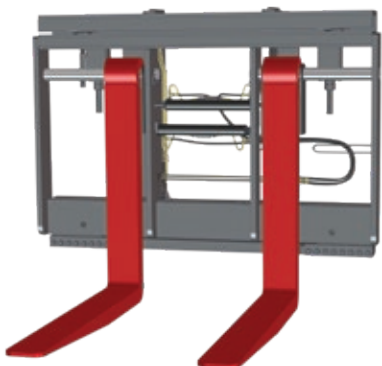
## HEAVY DUTY MASTS AND CARRIAGES

The H800-1050XD/S series is engineered for long load centers, wide loads and specialty loads in heavy duty-cycle conditions. Both pin-type and apron-style sideshift carriages are available with individual fork positioning and individual fork control, as well as Quick Disconnect (QD) pin type forks and optional heavy duty thinline QD forks. Carriages are designed to have minimal capacity derate with apron sideshifting carriages, enabling the truck to provide close to full rated capacity under all operating conditions. Greaseable load rollers help the front end components to provide years of dependable performance. The mast, with robust mast channels, rollers, stub shafts and chain anchors, helps to prevent less mast deflections.

*Different applications require different attachments and front end tools. Customize your truck with available carriage and fork options.*



*Pin-type fork positioner carriage with individual fork control*



*Apron-style sideshift fork positioner carriage with individual fork control*

## POWERTRAIN

- Tier 4 Final Cummins QSX 12 engine is standard for all models up to 105,000 lb of lifting capacity in North America and other EPA regulated markets.
- Tier 3 Cummins QSX 12 engine is standard for all models up to 105,000 lb of lifting capacity in Latin America and other non-regulated markets.
- Dana Spicer Off-Highway TE-30 powershift transmission with established ruggedness and durability. The 5-speed transmission provides precise shift point selection enabling maximum efficiency of the drivetrain while minimizing fuel consumption.
- Tier 4 Final optimized engine includes an emission reduction package featuring cooled Exhaust Gas Recirculation (EGR), a Selective Catalytic Reduction (SCR) system for NOx reduction, a Diesel Oxidation Catalyst (DOC) for particulate matter (PM) removal and a Diesel Exhaust Fluid (DEF) delivery system.
- Powertrain derate system helps to prevent damage to the drivetrain and components by extending the life of engine oil, transmission and coolant fluids.
- Derate conditions activated on:
  - High coolant temperature
  - High air intake temperature
  - High transmission oil temperature
  - Low engine or transmission oil pressure

## COOLING SYSTEM

The heavy duty cooling system is designed for ambient temperature conditions up to 113° F (45° C), and a hydraulically driven cooling fan helps provide efficient operation by drawing cool, clean air from the environment while mitigating dust generation.

## STEER AND DRIVE AXLES

Hyster® steer axles are engineered for high durability in the toughest applications. Hyster has collaborated with Kessler to provide heavy duty drive axles with wet disc brakes to provide long life and longer service intervals on wearable service components.

# TECHNOLOGY THAT TRANSFORMS YOUR BOTTOM LINE

We understand that your total cost of ownership extends beyond the initial acquisition costs. Hyster® has teamed with leading quality suppliers to provide well-integrated systems that help reduce your overall cost of operations over the useful life of the truck.

## OPTIMIZED SYSTEMS DESIGN

A unique collaboration with Cummins results in a harmonized powertrain featuring a Cummins QSX 12 engine paired with the TE-30 Spicer Off-Highway transmission.

- Drivetrain solution optimized for maximum performance and improved fuel economy.
- Efficient combustion enabled by robust engine technology results in lower fuel consumption.
- Low-hassle Tier 4 Final solution requires no use of Diesel Particulate Filter (DPF) or active regeneration; utilizes urea-based SCR system with a diluter for lower exhaust temperatures. The Tier 3 solution continues to be available in all non-regulated markets.
- Innovative ECO modes: Hi-P and e-Lo (Tier 4 Final)
  - Hi-P provides maximum performance and good fuel economy.
  - e-Lo provides minimum fuel consumption without losing productivity.
  - Automatic throttle-up feature enables truck to operate within its most efficient speed under varying load conditions.



*Cummins Tier 4 Final QSX 12 engine with after-treatment and DEF injection system*

## FEATURES TO REDUCE YOUR FUEL CONSUMPTION

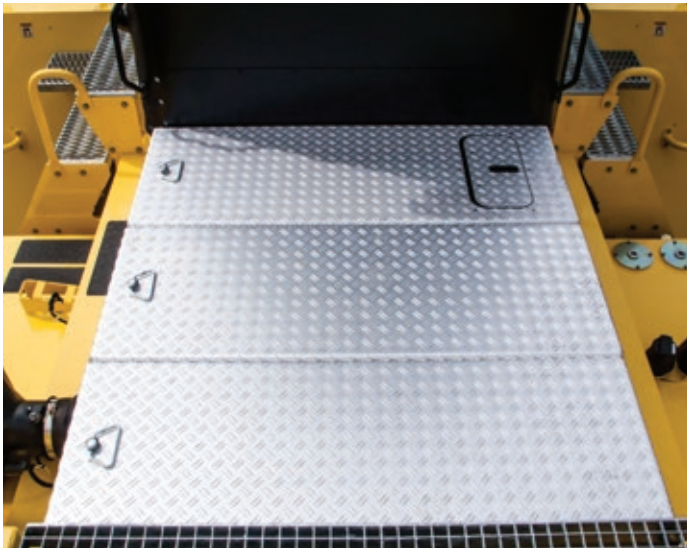
- Up to 20% lower fuel consumption compared to prior Tier 3 and Tier 4 interim Hyster® trucks.
- Xtra-High Pressure Injection (XPI) fuel system.
- Fueling system allows precise matching of engine rpm to load demands for optimal performance.
- Advanced controls enable engine to provide peak performance and operating efficiency while delivering great fuel economy and durability.
- Hibernate idle reduces the engine idle speed to 700 rpm during extended engine idle periods to further conserve fuel. (Available on Tier 4 engine trucks only.)
- Optional empty seat engine shutdown helps to reduce fuel consumption by shutting down the truck when the operator is out of the seat for extended periods of time, thus limiting idle hours on the truck.
- A hydraulically driven on-demand cooling fan draws power only when cooling is required between 10% and 100% of the engine speed, consuming less fuel and lowering noise levels.
- CANbus diagnostic fault codes are available for easy servicing and troubleshooting. Error codes are provided for effective identification of service issues while enabling rapid implementation of remedies, reducing downtime and frequency of repairs.

# EASE OF SERVICEABILITY

---

## ACCESS MAJOR COMPONENTS IN SECONDS

Hyster® trucks have been designed with the service technician in mind. The standard, powered, tilting operator compartment and the broad, removable floor plates provide quick access to key components, and daily checks do not require tilting the cab.



*Easily removable floor plates enhance service access*



## LONGER SERVICE INTERVALS

Major engine and drivetrain components are engineered to operate on 500-hour service intervals. Extended hydraulic oil change intervals of 2000 hours help the truck remain in operation with longer time between oil changes or servicing.

## ON-BOARD DIAGNOSTICS

CANbus on-board diagnostics with fuse relay board, controllers and other electrical components centrally located on the rear cabin wall make for easy servicing and troubleshooting. Fault codes and system notifications are provided through the Integrated Performance Display for quick and effective identification of service issues while enabling rapid implementation of remedies, reducing downtime and frequency of repairs.



*Battery compartment with lockable battery disconnect switch*



*Easy access interior cabin filter*

## SUPPORTING CUSTOMERS WITH WORLD-CLASS PARTS & SERVICE

---

Four Parts Distribution Centers strategically located around the world provide a full range of original equipment and aftermarket parts that help maintain our customers' uptime.

# ERGONOMICS

---



## OUTSTANDING ALL-AROUND VISIBILITY

### DESIGNED AROUND THE OPERATOR

With the largest cabin entry area in the industry, the operator cabin on the Hyster H800-1050XD series provides ample space for operators of any size to easily and more comfortably enter and exit the cabin. Once inside, operators enjoy the comfort of a spacious cockpit style cabin that keeps all truck information and controls within reach.

The ergonomically designed, seat-mounted control arm is fully adjustable and includes a wrist cushion and TouchPoint™ mini-levers to help reduce fatigue when operating the hydraulics. The reliable CANBUS controls for all main components and modular design of the control arm makes it possible to cover almost any possible truck configuration while being easily serviceable.

The 7" full color, touchscreen Integrated Performance Display tracks all truck activity, allows for easy access to change or calibrate truck settings and is integrated with Hyster Tracker™ telemetry system. The display also offers high-level onboard diagnostics allowing for advanced and quick troubleshooting.

A variety of seat configurations are offered to suit operator preference including mechanical or air suspension, cloth or vinyl cover, lumbar support and ventilated or heated seats. The air conditioning system can be pre-set for automatic climate control and the unique high and rear louvers provide direct air flow toward the operator.

## VISIBILITY

A low profile carriage enables a clear line of vision for an optimized view of fork tips. Forward visibility is uncluttered by the position of hydraulic valves, hoses or mast cross-members with a clear view through the mast window. Canted hoses are arranged along the line of sight so the operator sees only one hose and has good visibility.

Curved, scratch resistant, tempered glass front and rear windshields, armored glass top window and steel-framed glass doors provide operators with excellent all-around visibility. On the exterior, sloping counterweights enhance visibility of steer tires for improved maneuverability and reduced tire gouging.



*A 7 inch full-color Integrated Performance Display provides truck performance data in one clear screen.*




*Optimized view of fork tips*



*Fully adjustable steering column*



Hyster Company  
P.O. Box 7006, Greenville, North Carolina 27835-7006

© Hyster Company. 2024, all rights reserved. Hyster and  are trademarks of Hyster-Yale Group, Inc.  
Hyster products are subject to change without notice. Trucks may be shown with optional equipment.